

## Taos Field Office -Fuelwood Special Stipulations

These Special Stipulations are part of your permit and must be in the permittee's possession when gathering and transporting fuelwood upon public lands or roads.

1. Permits are non-refundable and non-transferable and are only valid on public lands administered by Bureau of Land Management within the areas specified on the map provided. **Copies are not allowed.**
2. Adhere to all instructional and regulatory signs posted on BLM lands, including having legal access to BLM lands.
3. Any completely **dead pinyon or juniper** tree under 12" diameter may be cut and removed, as long as doing so does not constitute a prohibited action as defined below.
4. After cutting a dead standing tree, any remaining stump must be no taller than 6 inches.
5. Slash (branches, stems, etc.) and any unused vegetative material resulting from harvesting activities must be removed from roads, fences, and other improvements and scattered on the ground at no more than 24 inches high.
6. Leave gates as you found them.
7. Securely attach and validate (punching out the month and day of transport) one haul tag per half cord of firewood while the load is in transport, making sure haul tags are highly visible from the rear of the vehicle. Permits/haul tags must be used within 30 days of purchase or December 31, 2022, whichever comes first. Each household may harvest up to eight cords of fuelwood per year.
8. Ensure all power saws are equipped with an exhaust system and are in good condition. Each saw must have a spark arrestor consisting of a wire mesh screen with a maximum mesh opening of .023 inches.
9. All sales are final and non-refundable and non-transferable.
- 10.

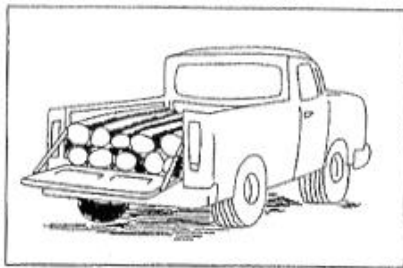
### **Prohibited actions:**

1. Littering or dumping trash.
2. Disturbing prehistoric sites, historic sites, or artifacts. Archaeological and historic resources are protected by Federal Laws. No driving on or across archaeological sites or historical structures is permitted. Intentional disturbance or vandalism of archaeological or historical sites or removal of historic artifacts of any kind is punishable under the Archaeological Resources Protection Act (Public Law 96-95; 16 U.S.C. 470) by fines of up to \$10,000 or imprisonment of up to one year, or both, for each incident.
3. Vehicular travel on roads that show evidence of having been closed to vehicular traffic by such means as berms, ripping, scarification, reseeding, fencing, gates, barricades or posted closures.
4. Vehicular travel when it creates rutting in excess of four (4) inches deep.
5. Vehicular travel off road more than 300 feet from existing routes.
6. Blocking traffic or impeding fire and emergency vehicles.
7. Damaging or disturbing any tree with visible cavities or other evidence of wildlife use.
8. Using heavy equipment to cut and/or remove forest products.
9. Forest product removal within 150 feet of the centerline of any flowing watercourse or paved road or highway.
10. Cutting or removal of trees or logs marked with paint or tagged as wildlife trees, bearing trees, seed trees, or with transect location signs.
11. Cutting, injuring, or removing **any live tree**.
12. Operating mechanical equipment (e.g. chainsaws) in areas designated as a fire restriction closure. For current fire restrictions, call 575-758-8851 or visit <https://go.usa.gov/xuR8u>

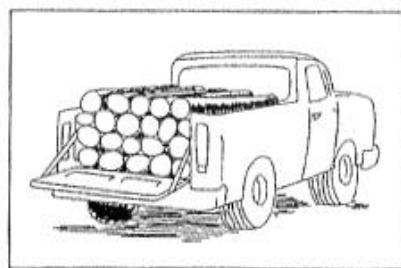
## Areas Closed to Fuelwood Harvesting & Removal

- San Antonio Wilderness
- Rio Chama Wilderness Study Area
- Ojo Caliente Wilderness Character area
- Ute Mountain Wilderness
- La Cieneguilla/La Cienega ACEC
- Rio Grande Wild & Scenic River Corridor
- Rio Chama Wild & Scenic River Corridor
- Guadalupe Mountains (where hunting is excluded)
- Rio Grande Gorge (rim to rim)
- Orilla Verde Recreation Area
- Wild Rivers Recreation Area
- Taos Valley Overlook
- Santa Cruz Lake

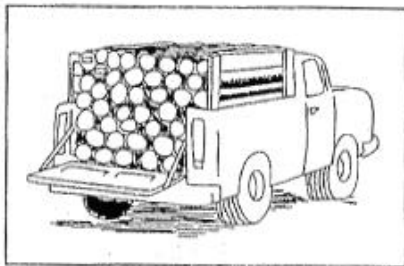
## Measuring a Cord



1/3 Cord for Long Bed  
1/4 Cord for Short Bed



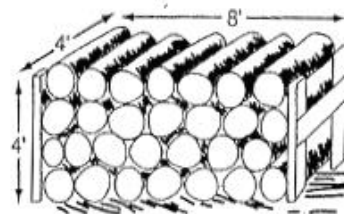
1/2 Cord for Long Bed  
1/3 Cord for Short Bed



1 Cord for Long Bed  
3/4 Cord for Short Bed

$$\text{Number of Cords} = (\text{length} \times \text{width} \times \text{height}) \div 128$$

Firewood is commonly measured in cords. A standard cord is the amount of lightly piled wood in a stack 4 feet wide by 4 feet high by 8 feet long.



The average half-ton pickup truck can carry a half cord of dry wood without overlapping the vehicle.

ONE CORD (128 cubic feet)