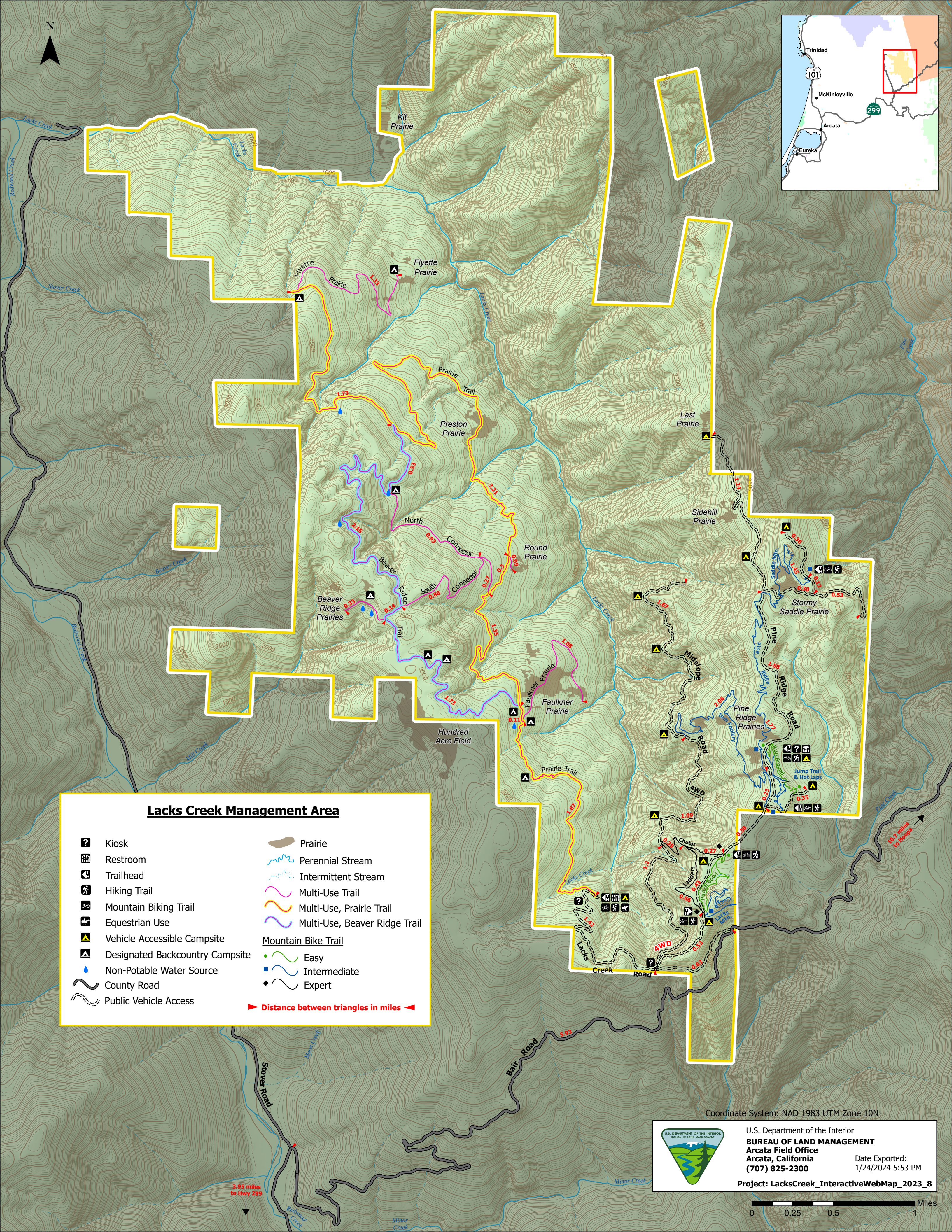


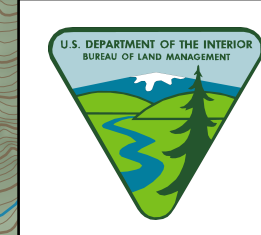
Lacks Creek Management Area

	Kiosk		Prairie
	Restroom		Perennial Stream
	Trailhead		Intermittent Stream
	Hiking Trail		Multi-Use Trail
	Mountain Biking Trail		Multi-Use, Prairie Trail
	Equestrian Use		Multi-Use, Beaver Ridge Trail
	Vehicle-Accessible Campsite	Mountain Bike Trail	
	Designated Backcountry Campsite		Easy
	Non-Potable Water Source		Intermediate
	County Road		Expert
	Public Vehicle Access		

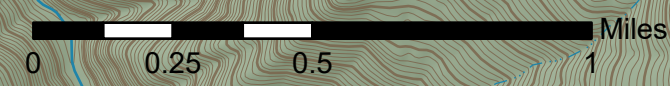
Distance between triangles in miles



Coordinate System: NAD 1983 UTM Zone 10N



U.S. Department of the Interior
BUREAU OF LAND MANAGEMENT
 Arcata Field Office
 Arcata, California
 (707) 825-2300
 Date Exported:
 1/24/2024 5:53 PM
 Project: LacksCreek_InteractiveWebMap_2023_8



3.95 miles to Hwy 299

10.7 miles to Hoopa