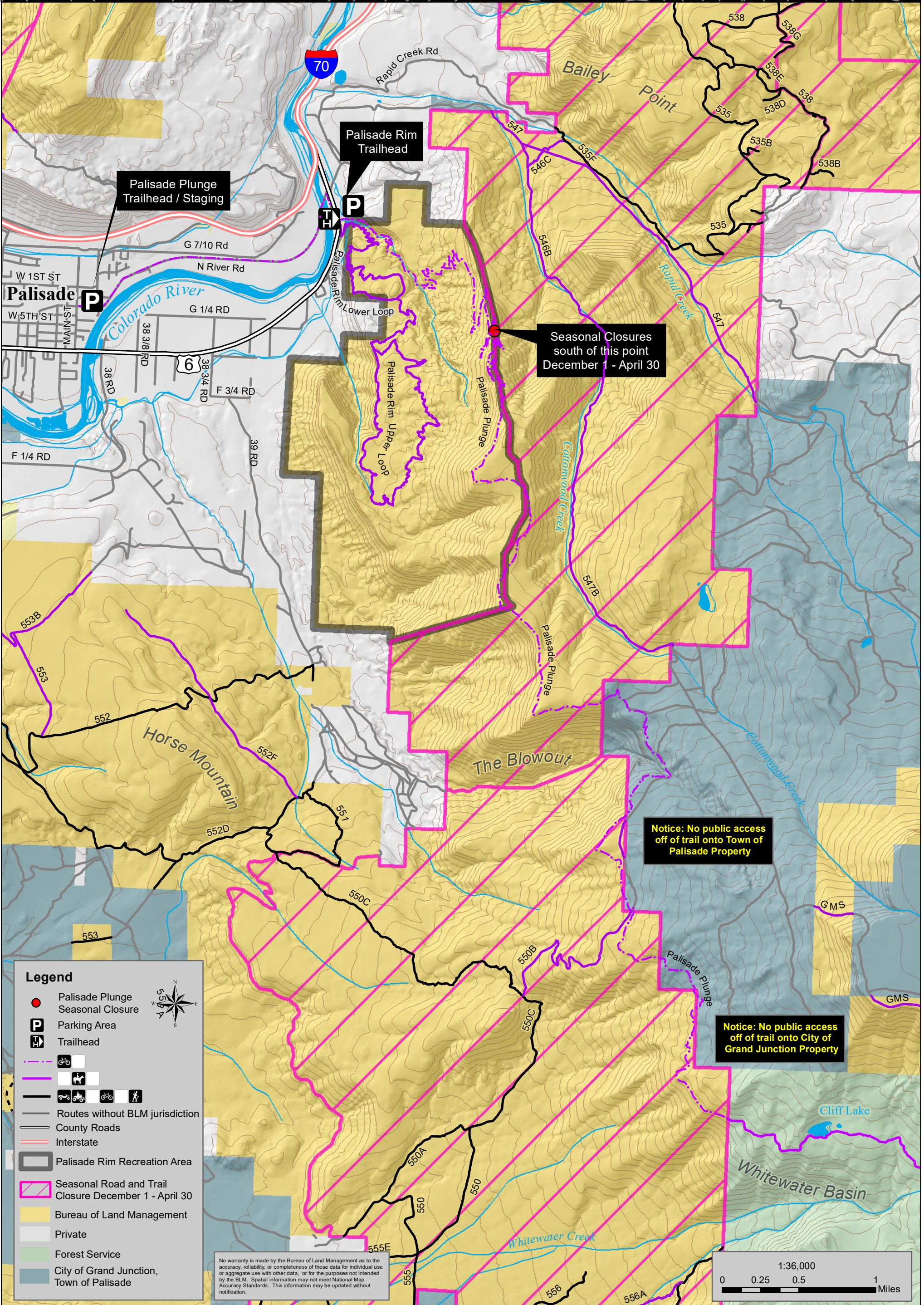




Palisade Rim and Palisade Plunge Trails



Palisade Plunge Trailhead / Staging

Palisade Rim Trailhead

Seasonal Closures south of this point
 December 1 - April 30

Notice: No public access off of trail onto Town of Palisade Property

Notice: No public access off of trail onto City of Grand Junction Property

Legend

- Palisade Plunge Seasonal Closure
- Parking Area
- Trailhead
- Bicyclist
- Horse
- Hiker
- Stroller
- Wheelchair
- Routes without BLM jurisdiction
- County Roads
- Interstate
- Palisade Rim Recreation Area
- Seasonal Road and Trail Closure December 1 - April 30
- Bureau of Land Management
- Private
- Forest Service
- City of Grand Junction, Town of Palisade

No warranty is made by the Bureau of Land Management as to the accuracy, reliability, or completeness of these data for individual use or aggregate use with other data, or for the purposes not intended by the BLM. Spatial information may not meet National Map Accuracy Standards. This information may be updated without notification.

