



U.S. Department of the Interior  
Bureau of Land Management

---

# Report to Congress: An Analysis of Achieving a Sustainable Wild Horse and Burro Program

---

**David Jenkins, Ph.D.**

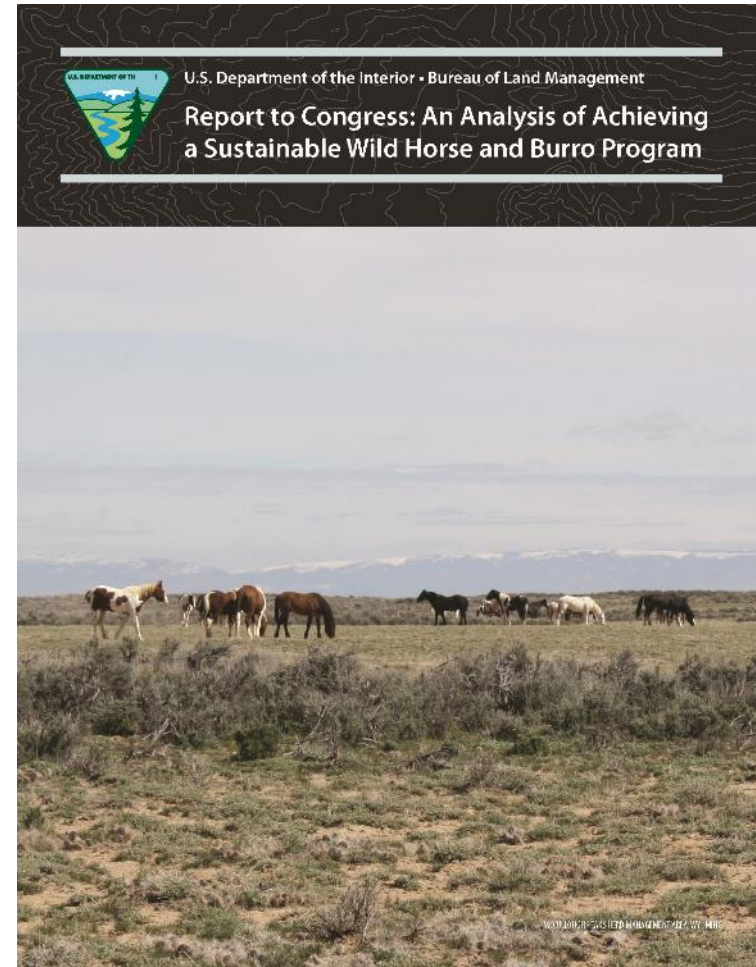
**Assistant Director for Resources and Planning**





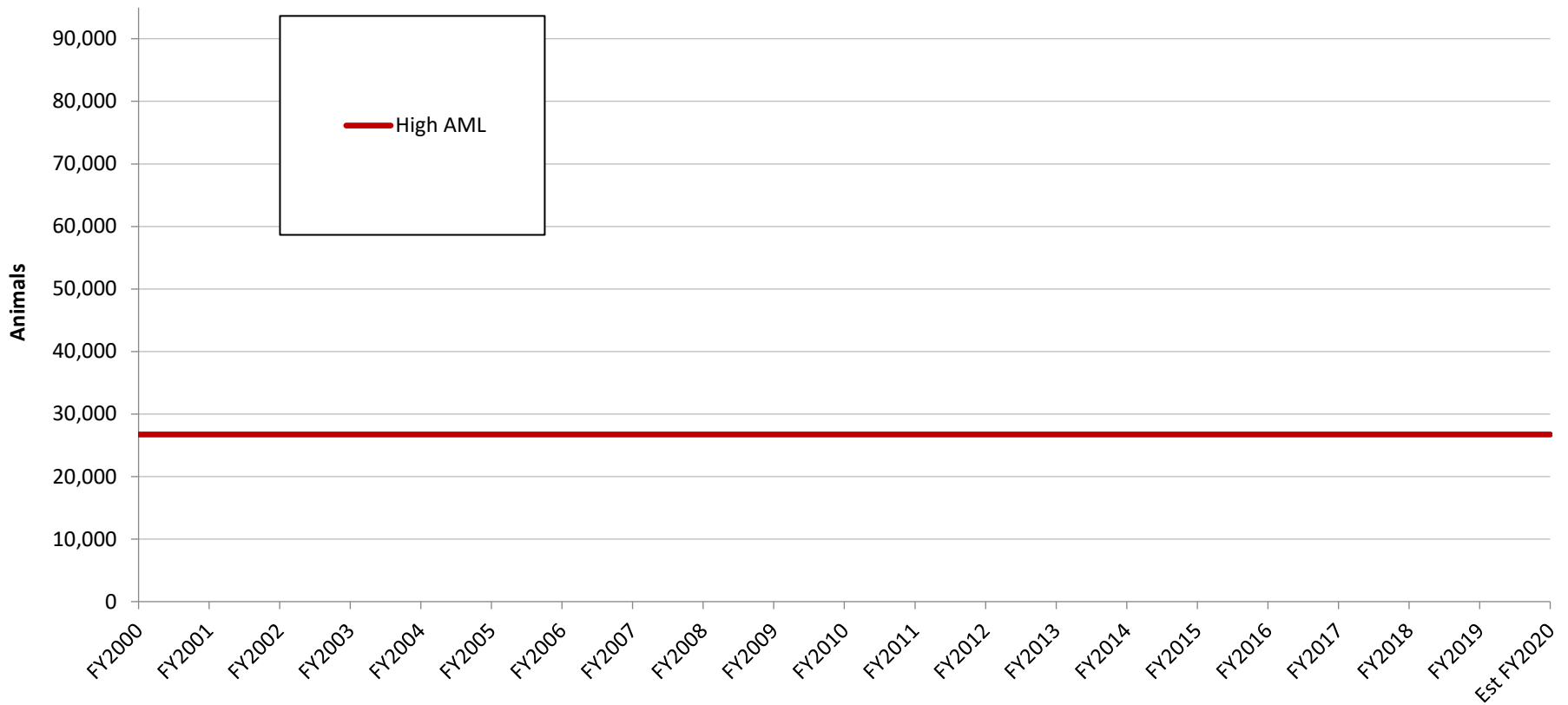
# Report to Congress

- On May 8, 2020, the BLM submitted a report to Congress outlining a strategy for achieving **healthy and sustainable populations** of wild horses and burros on public lands.
- The report proposes a **combination of non-lethal methods** to reduce overpopulation and achieve sustainable population levels over 15-18 years.



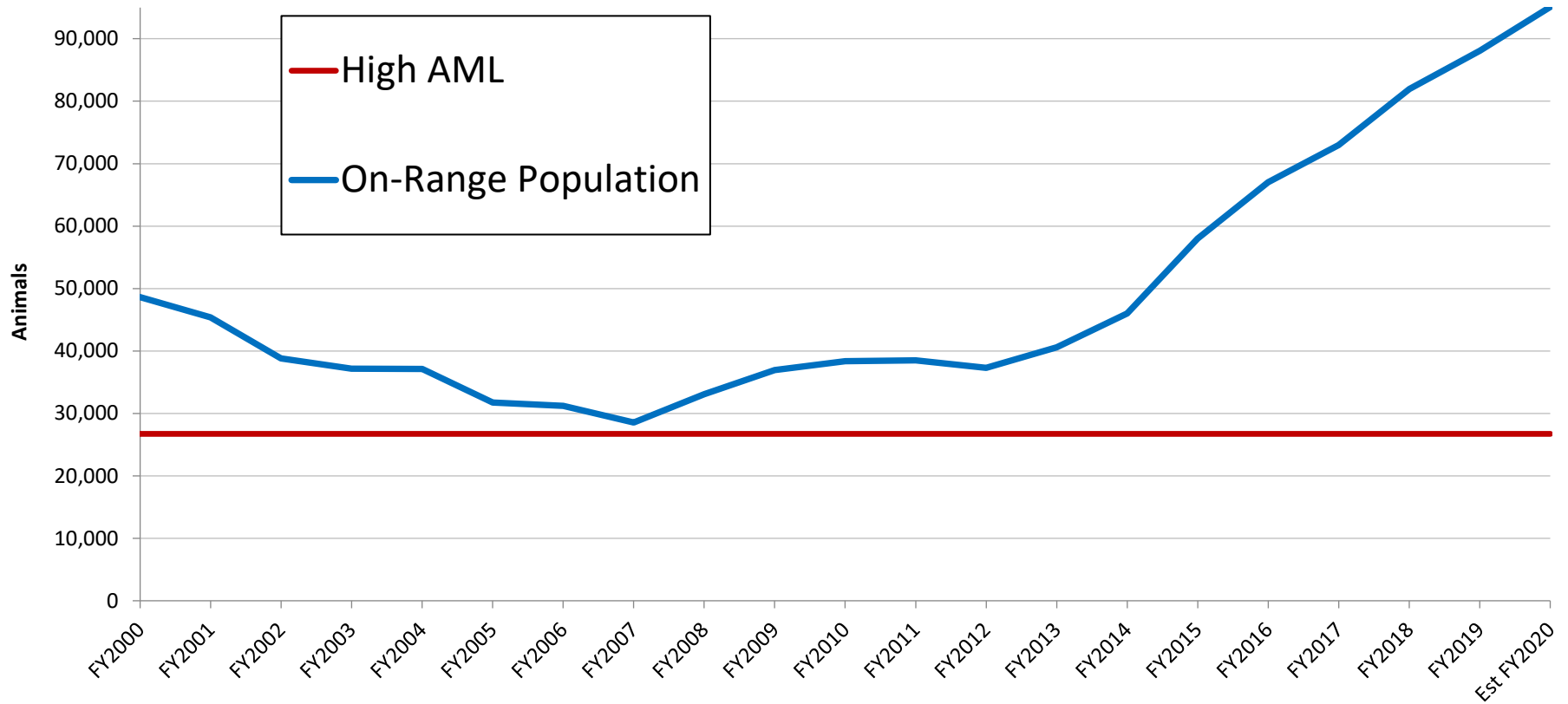


# On and Off-Range Populations, Private Care Placements, AML and Removals



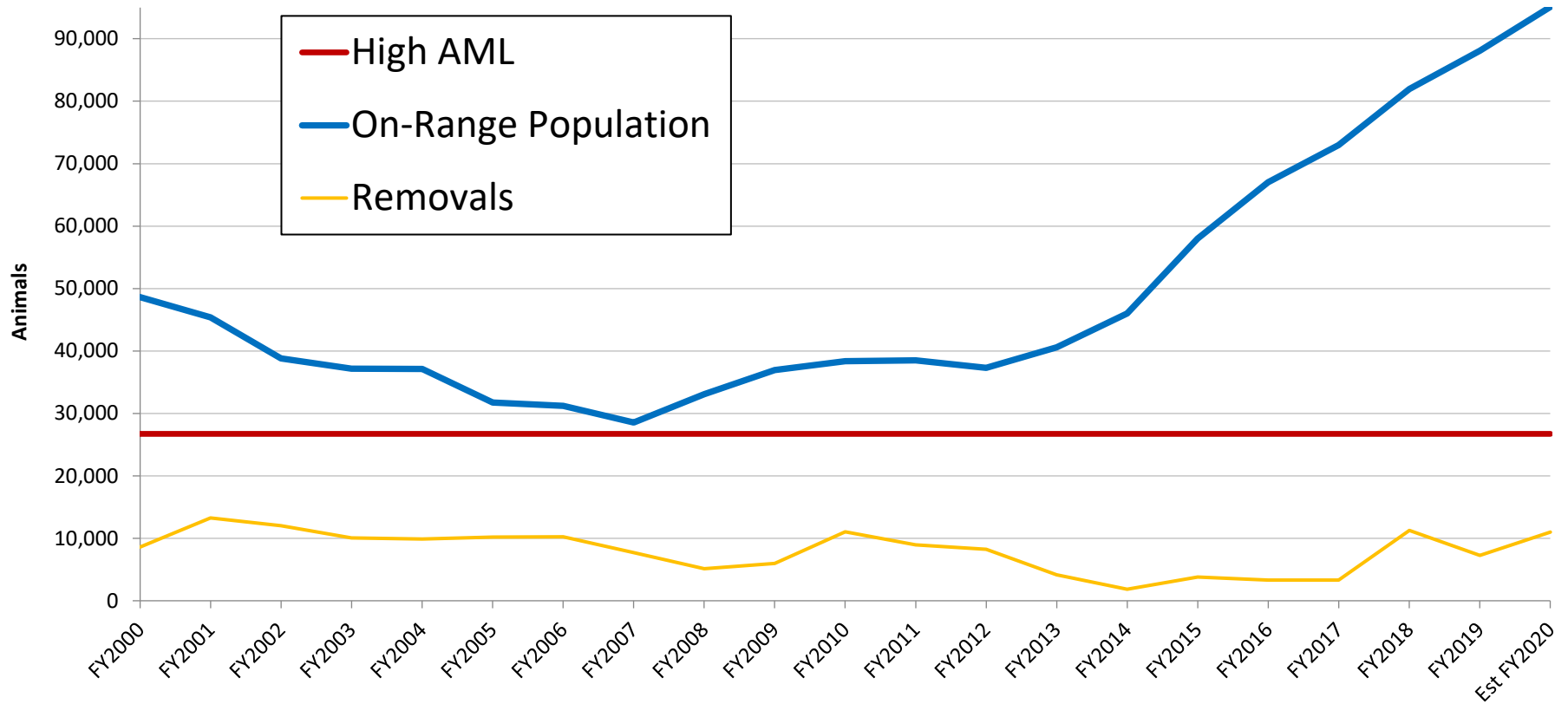


# On and Off-Range Populations, Private Care Placements, AML and Removals



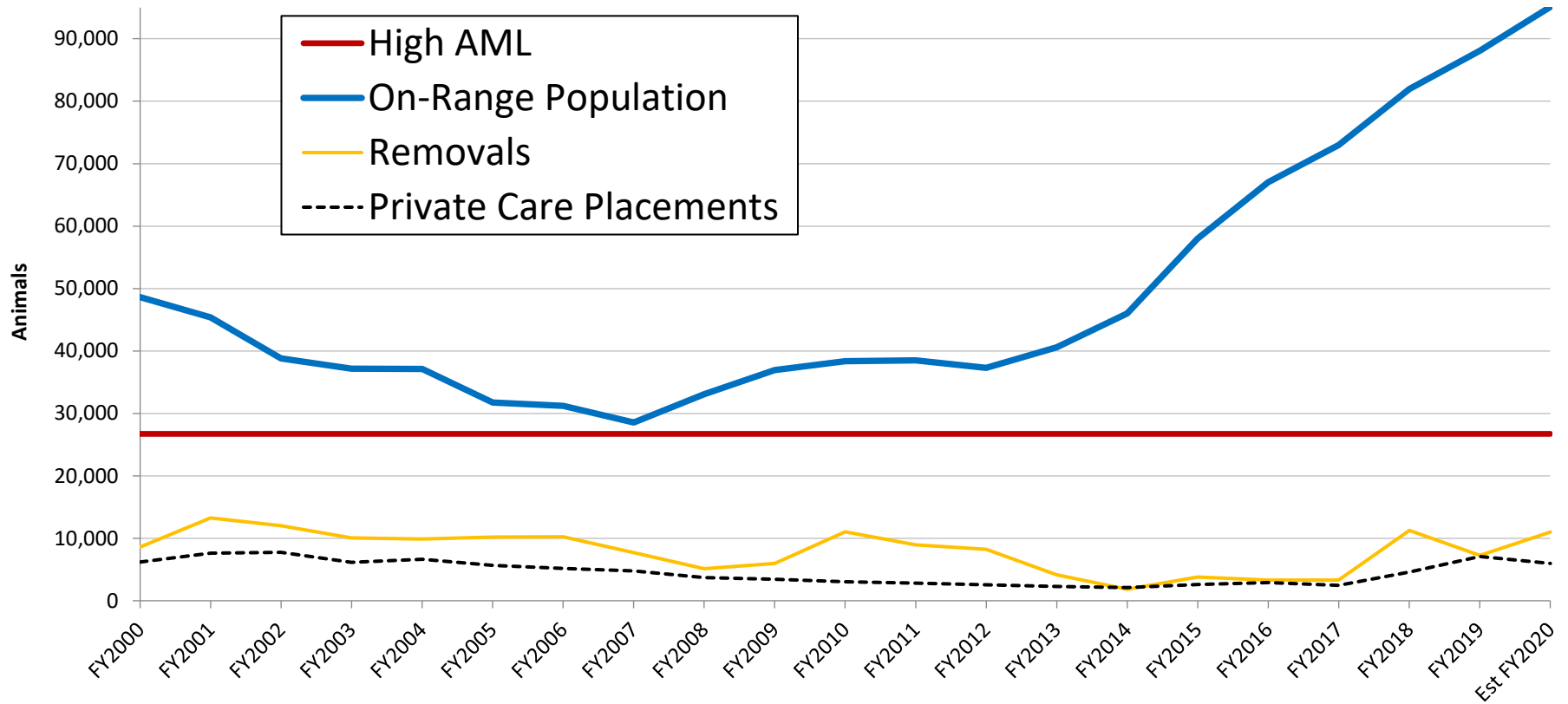


# On and Off-Range Populations, Private Care Placements, AML and Removals



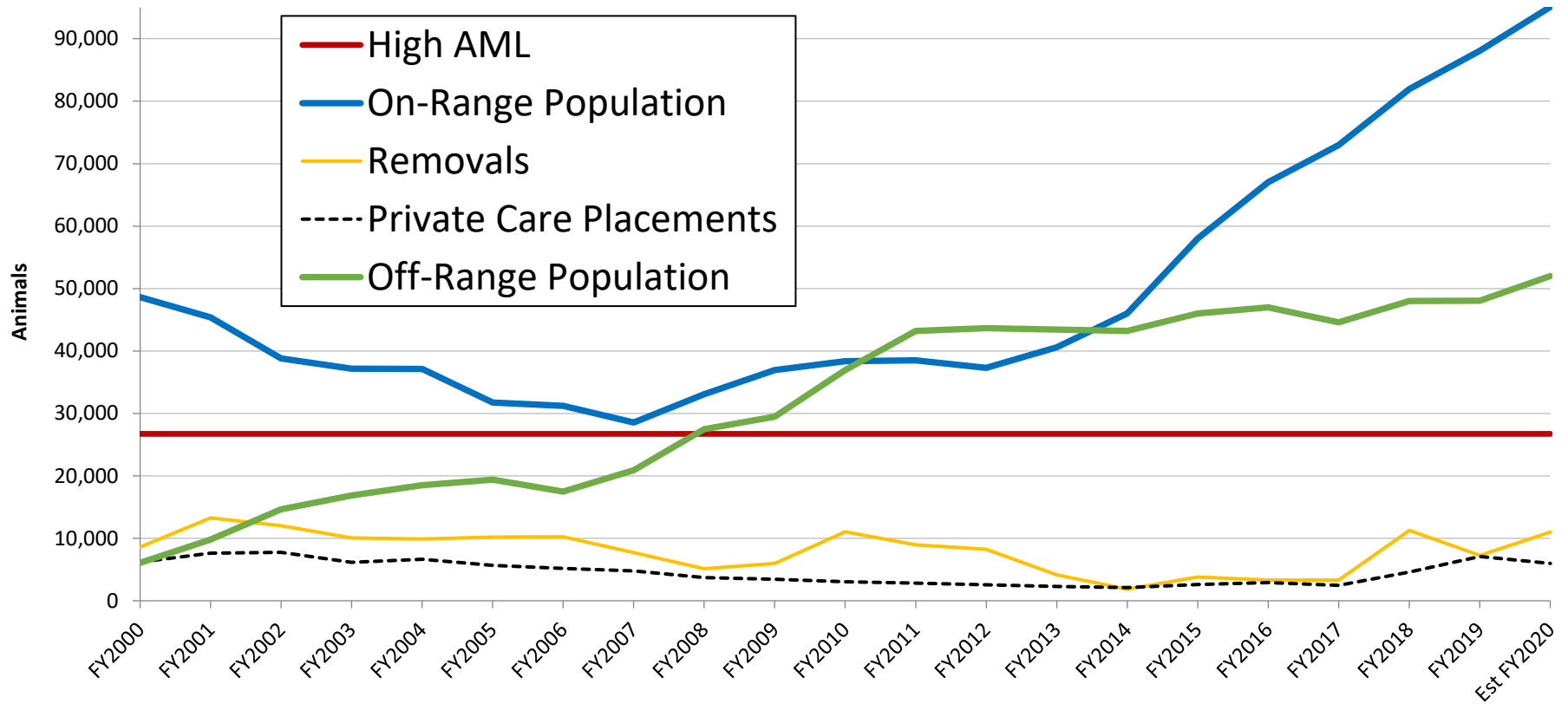


# On and Off-Range Populations, Private Care Placements, AML and Removals





# On and Off-Range Populations, Private Care Placements, AML and Removals





# Report Highlights

- Place into private care a minimum of 6-7,000 wild horses and burros annually (in FY19, BLM placed 7,104 animals)
- Continue the Adoption Incentive Program and work with partners to maintain and increase adoptions and sales
- Procure holding space to provide long-term care to animals not placed into private care.

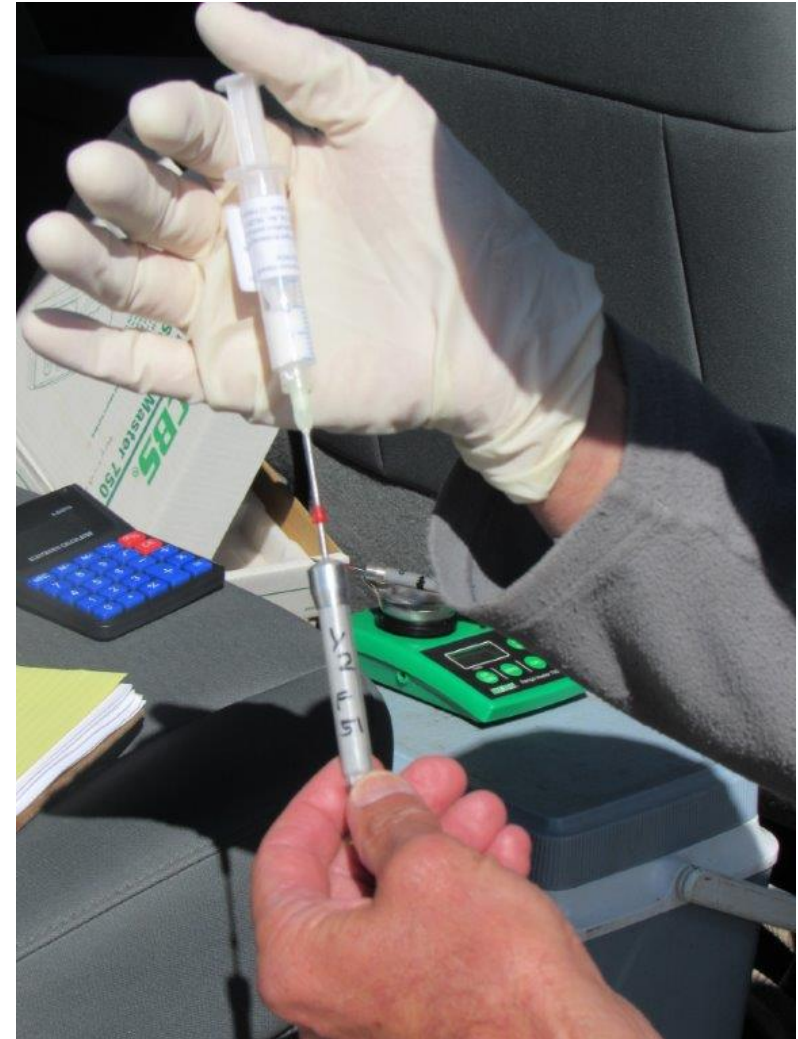






# Report Highlights

- Treat 3,500-9,000 gathered animals annually over the initial 10 years, slowly decreasing the number receiving the treatment in the last 5 years of the strategy.
- The BLM supports a combination of **temporary fertility control vaccines** and **the safe, permanent sterilization** of some animals as part of a broader strategy of population growth suppression.





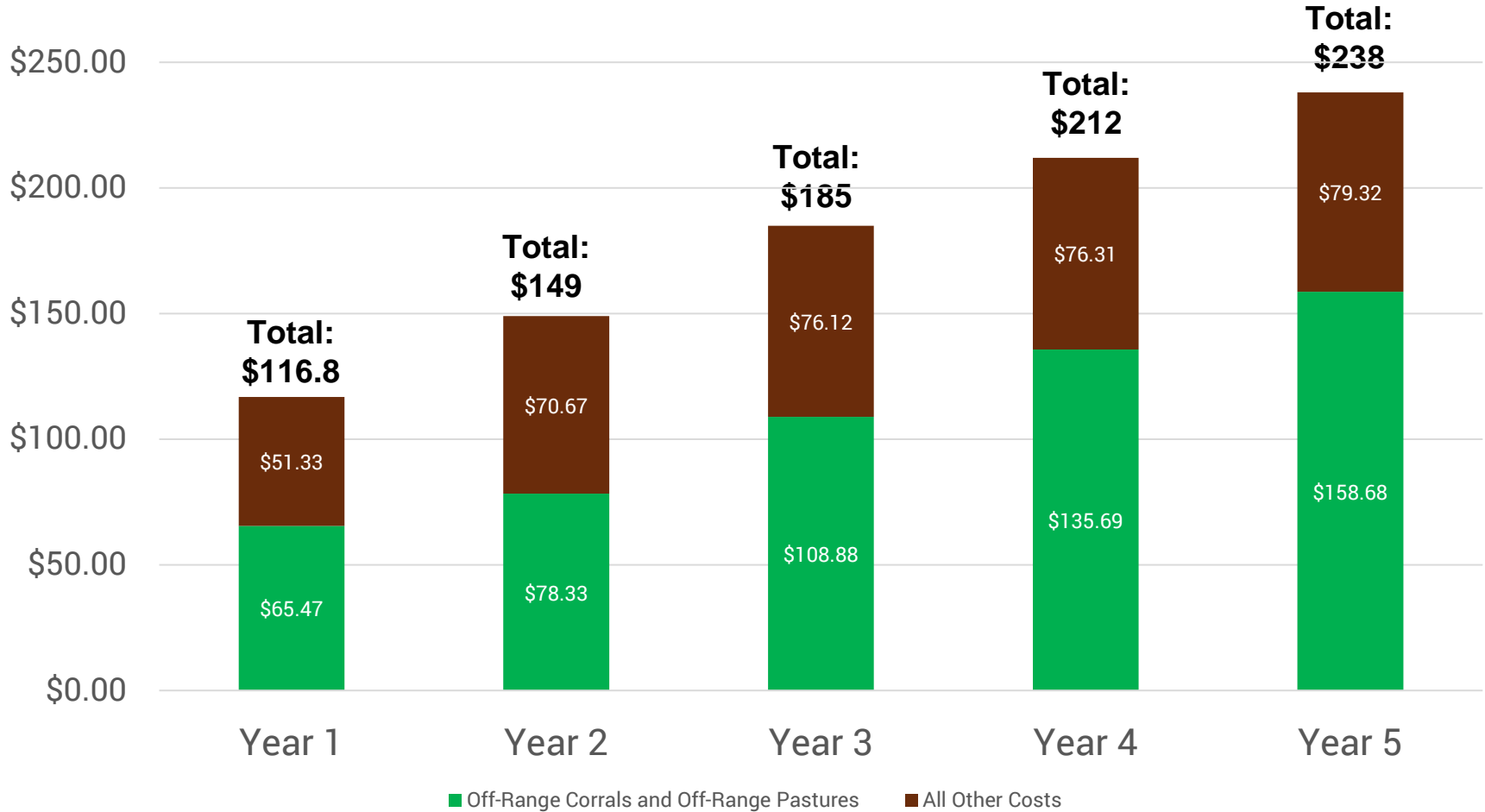
# Report Highlights

- As management activities are ramped up, other support functions will also need to be increased, including:
  - Resource monitoring
  - Population surveys
  - Planning and NEPA
  - Research
  - Rangeland restoration and rehabilitation





# Five Year Estimated Funding Table (\$ in millions)





# Factors for Success

- Sustained commitment to the plan by agency leadership
- Significantly increasing BLM staffing for gathers, off-range care, monitoring, support staff, etc.
- Availability of affordable contracted services, such as new corral/pasture facilities, veterinarian and gather services, NEPA work, etc.
- Adequate annual funding levels
- Willing partners to assist in private care placement, holding and research

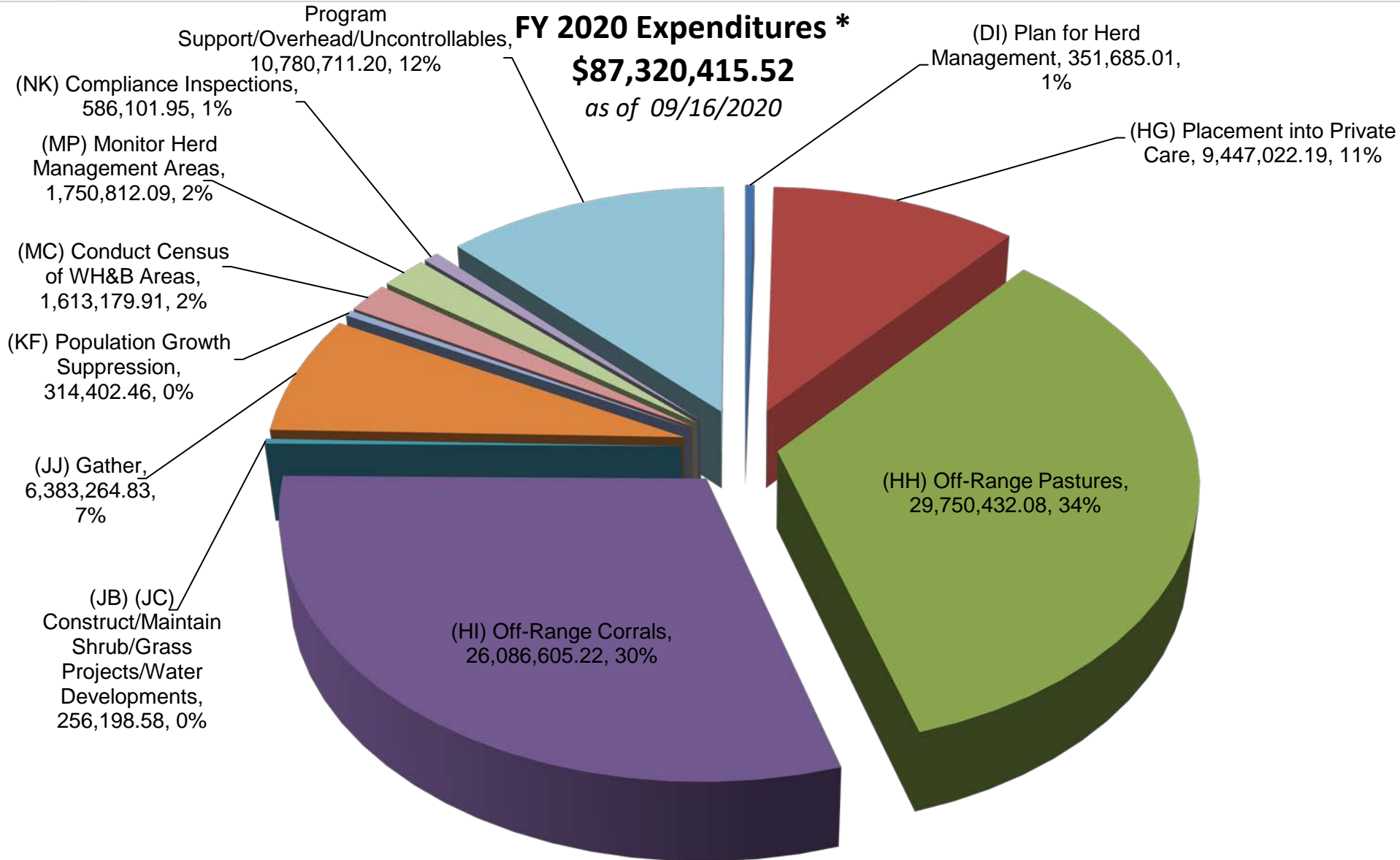




### FY 2020 Expenditures \*

**\$87,320,415.52**

*as of 09/16/2020*



\* Total expenditures includes L1020, L1110, L1150, L1170, L5210, L5220, L1920, and L9830, as well as L1060 (WHB Program), funding expended in FY2020.



# What's at stake

## Antelope Valley HMA, Nevada



1984: Wild horse population was 449.  
Highly vegetated ground cover.



2017: Wild horse population had risen to  
1,320. Only large shrubs and trees  
remain with only light ground cover.

