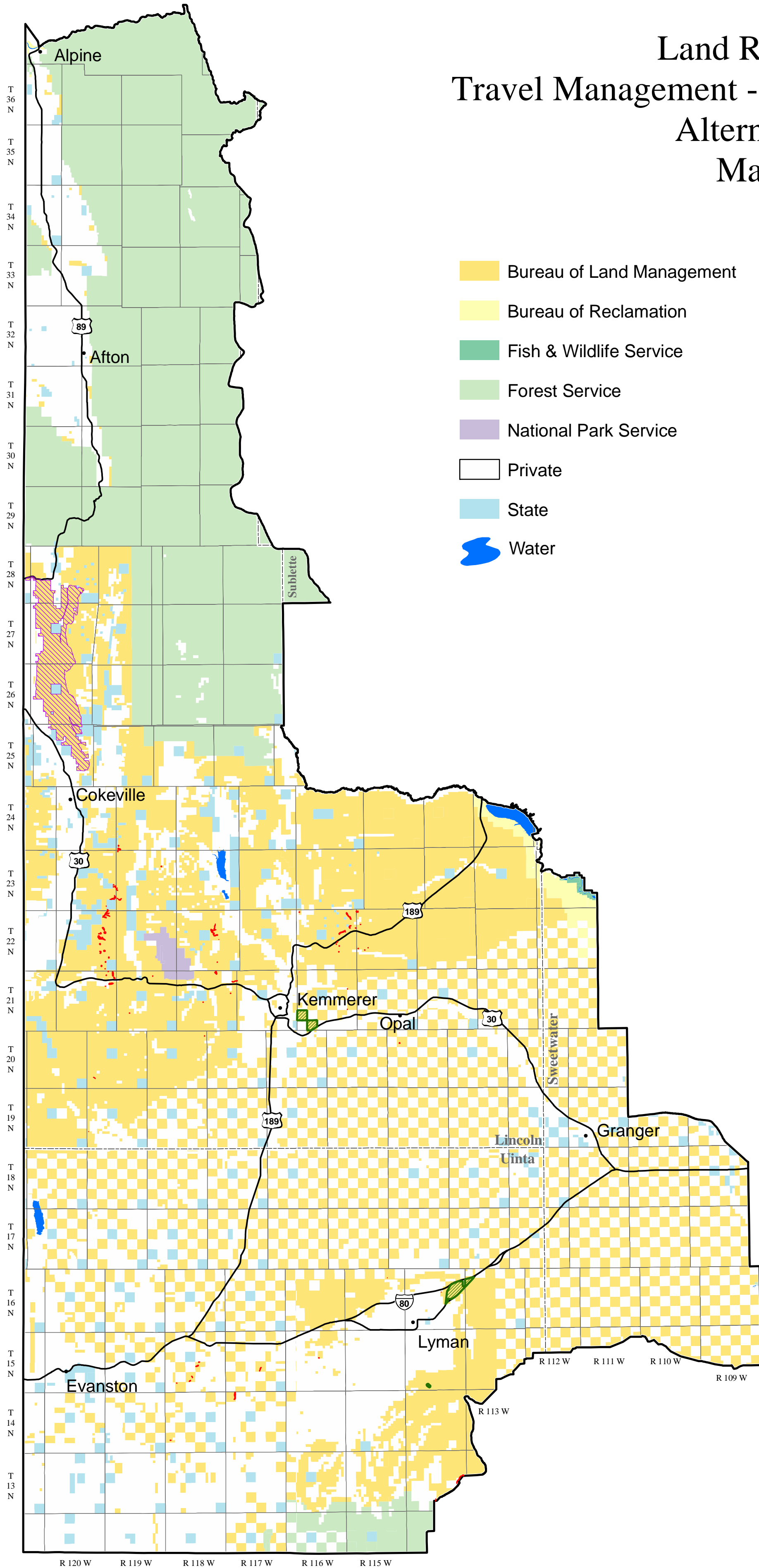


# Land Resources

## Travel Management - Off-Highway Vehicles

### Alternative C

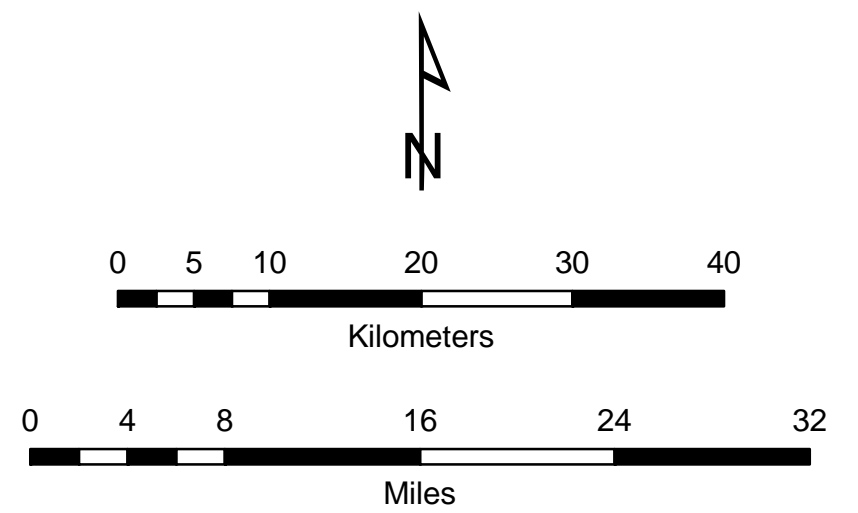
#### Map 48



- Bureau of Land Management
- Bureau of Reclamation
- Fish & Wildlife Service
- Forest Service
- National Park Service
- Private
- State
- Water

- Special Status Plants (250 foot buffer)
- Closed to Motorized and Mechanized Vehicles
- Open for Off-Highway Vehicle Use

\*Note: OHV access will be designated as limited until completion of travel management planning.



NO WARRANTY IS MADE BY THE BUREAU OF LAND MANAGEMENT  
FOR USE OF THE DATA FOR PURPOSES NOT INTENDED BY BLM.  
Note: Management decisions depicted only apply to identified BLM-administered lands.  
August 2008