

Coeur d'Alene Field Office
Resource Management Plan

**Recommended
Wild and Scenic
River Segments**

LEGEND

Colored areas indicate BLM lands within 0.25-mile either side of the stream.

- Wild Recommended
- Recreation Recommended
- Scenic Recommended
- Other BLM Lands



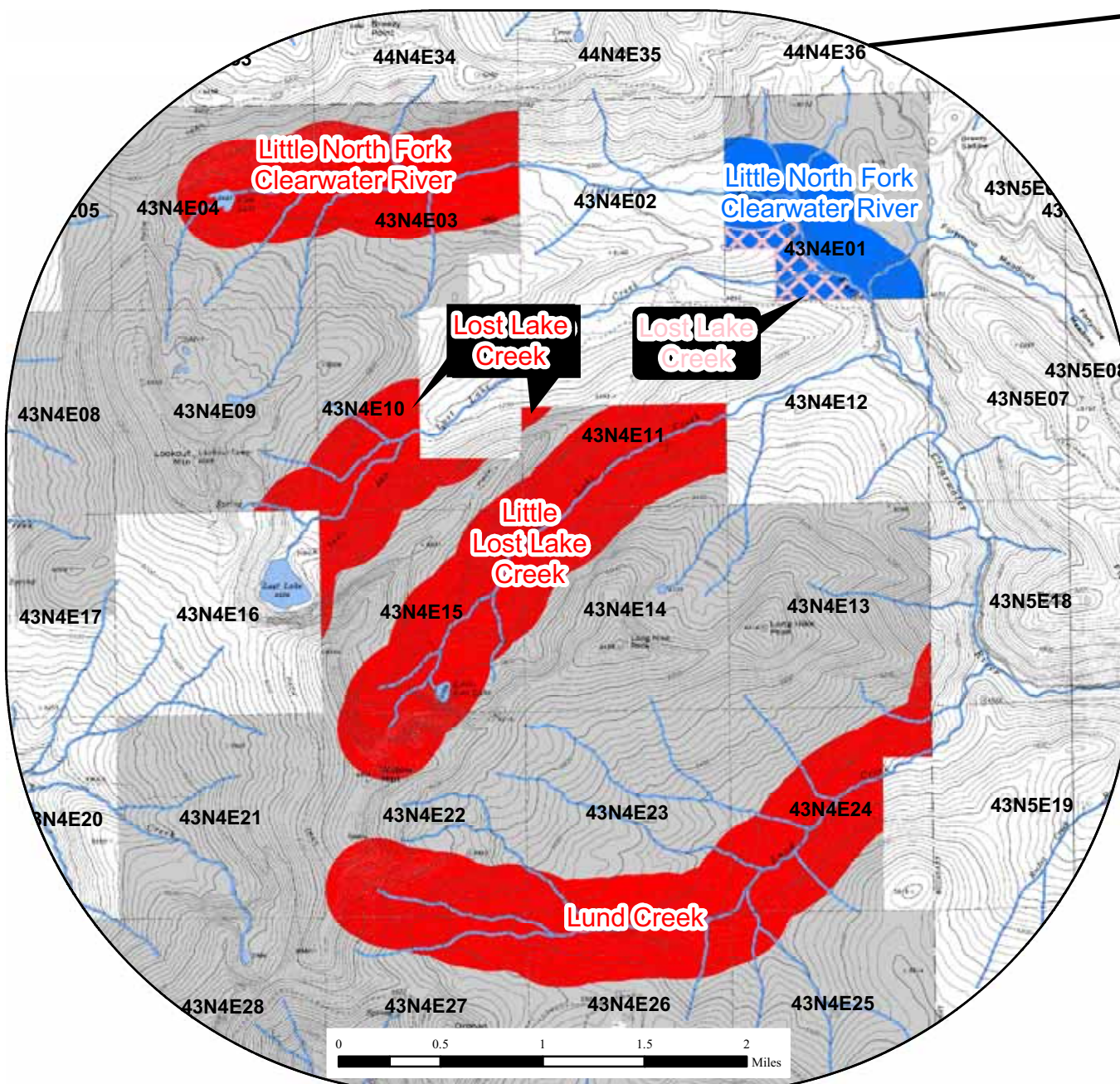
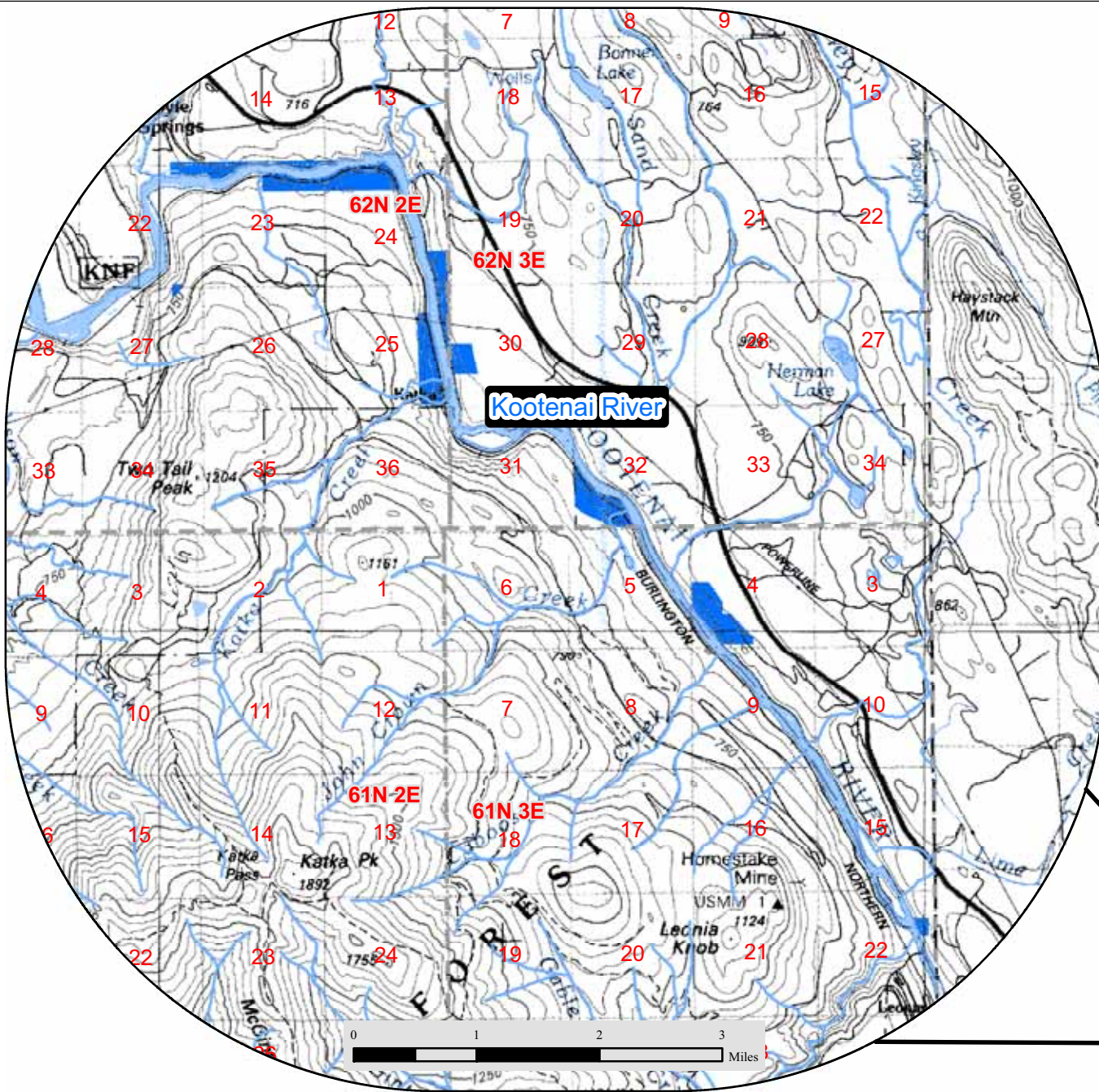
Topographic background generated from USGS 7.5-minute series DRGs. Hydrologic data obtained from National Hydrography Dataset. Surface management and additional data were created at 1:24,000 scale by Coeur d'Alene District Office GIS personnel.

No warranty is made by the Bureau of Land Management as to the accuracy, reliability, or completeness of these data for individual use or aggregate use with other data, or for purposes not intended by BLM. Spatial information may not meet National Map Accuracy Standards. This information may be updated without notification.

Department of the Interior
Bureau of Land Management
Coeur d'Alene Field Office
3815 N. Schreiber Way
Coeur d'Alene, ID 83815

May 2007

Data is displayed in UTM zone 11 north, NAD83.



**Recommended Wild and Scenic
River Segments**