

THE WIND RIVER BREEZE

JULY 2010

**FROM THE LANDER FIELD OFFICE, FIELD MANAGER
JIM CAGNEY:**

Dear Neighbor,

Thank you for your continued interest in the Lander Resource Management Plan (RMP) revision. Currently we anticipate issuing the Notice of Availability of the Draft Lander RMP and Environmental Impact Statement (EIS) in 2011.

In addition to the RMP revision, the Lander Field Office is involved in the development of several other EISs and Environmental Assessments (EAs) that will affect public lands in the Lander planning area. Two EISs, GMI and Beaver Creek, are addressing oil and gas development in the Lysite-Mineta area and the southeast corner of the Wind River Indian Reservation, respectively. The proposed Cameco Uranium EIS project involves an in situ recovery uranium mine in the Gas Hills area and the proposed Black Mountain Wind EIS project involves an industrial wind energy plant in the eastern part of the Lander planning area. Some of the EAs that are being developed address livestock grazing permit renewals, uranium exploration, and gold exploration. Information on these and other projects in development is available on the Bureau of Land Management (BLM) Lander website at: http://www.blm.gov/wy/st/en/field_offices/Lander.html.

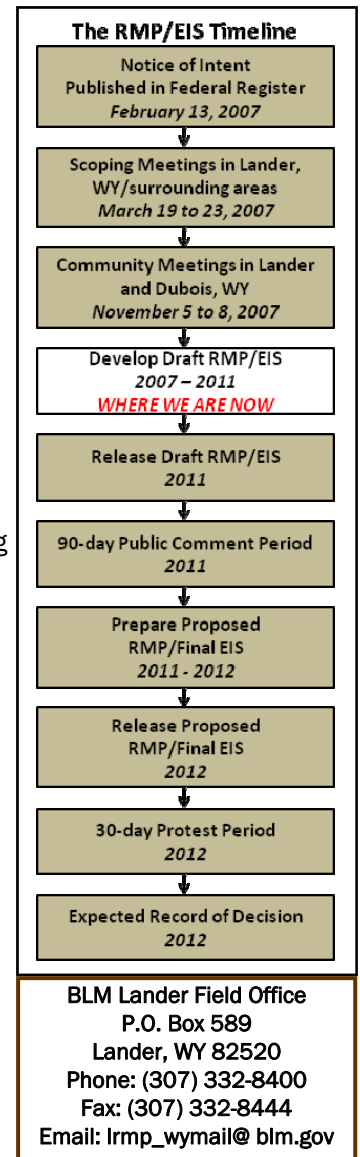
Again, thank you for your participation and comments. I invite you to remain involved throughout the RMP revision process.

Sincerely,
Jim Cagney
Lander Field Manager

**WHERE ARE WE IN THE REVISION PROCESS?**

In May 2010, the Lander Field Office staff and cooperating agencies held a workshop to develop a preferred alternative for the RMP revision project. As required by planning guidance, the BLM must select a preferred alternative which provides a combination of planning decisions and management that best meets the BLM's multiple use and sustained yield mandates. In developing the preferred alternative, the BLM considered the impacts analysis of alternatives A through C, specific issues raised throughout the planning process, recommendations from cooperating agencies and BLM resource specialists, consideration of planning criteria, and resolution of resource conflicts. To provide the public with an understanding of the range of management from which the preferred alternative will be developed, the BLM will be posting maps depicting management options emphasizing resource conservation and resource use. The maps will be available later this month on the Lander RMP website at: <http://www.blm.gov/wy/st/en/programs/Planning/rmps/lander.html>. The BLM is also coordinating with cooperating agencies to develop and finalize a reclamation appendix for inclusion in the RMP revision.

The BLM will begin analyzing the potential impacts of the preferred alternative in August. The impacts analysis will provide the BLM with further information on the potential effects to the natural and human environment from implementation of the preferred alternative. The BLM will incorporate the impacts analysis for the preferred alternative and the range of alternatives into the Draft EIS, scheduled for release in 2011.



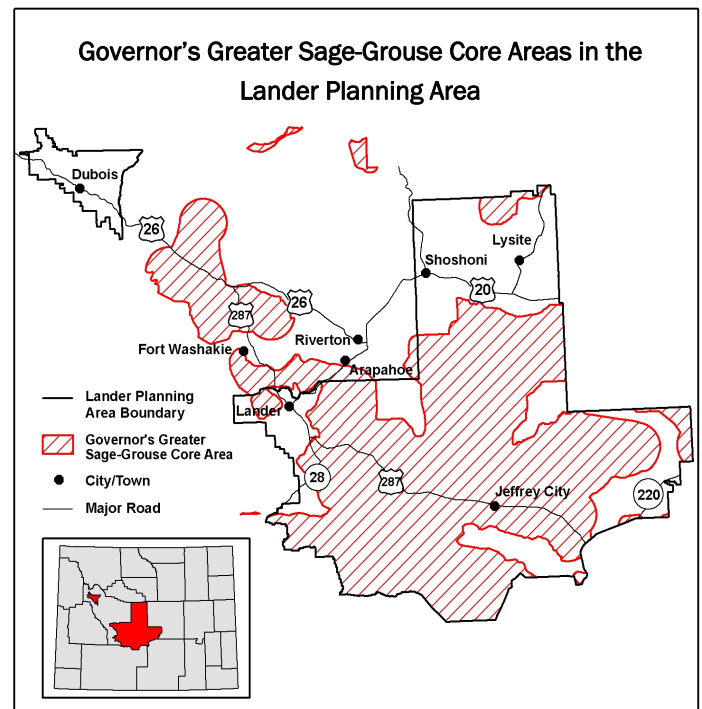
Wyoming Greater Sage-Grouse Updates

On March 5, 2010, the U.S. Fish and Wildlife Service (USFWS) announced its 12-month finding that listing of the greater sage-grouse is “warranted but precluded.” Thus, the species is designated as a candidate for listing with the USFWS and will be reviewed annually to determine if the listing status should be changed.

The sage-grouse implementation team, assigned by the Governor of Wyoming and made up of private, state, and federal entities, met in June to designate and refine “core population areas” for the species within the state. The team also developed recommended guidelines for regulating activities within core areas and submitted these revised core areas and recommendations for the Governor’s review. The figure to the right displays the current distribution of the Governor’s greater sage-grouse core areas in the Lander planning area. Approximately 72 percent of the Lander planning area is within the Governor’s greater sage-grouse core areas.

As steward of over half of all remaining sagebrush habitat in the United States, more than 57 million acres, the BLM plays a critical role in preserving greater sage-grouse habitat. Specific BLM policies have been developed to address concerns for this species, including BLM Wyoming Instruction Memorandum No. WY-2010-012 (December 29, 2009), which provides guidance to Wyoming BLM Field Offices on greater sage-grouse habitat management for surface-disturbing and disruptive activities and resource management planning. The guidance also provides consistency in management practices for Wyoming BLM Field Offices for the conservation of greater sage-grouse and their habi-

tats. These policies and recommendations are largely tiered to those outlined in the WGFD’s Recommendations for Development of Oil and Gas Resources in Important Wildlife Habitats (May 2009) and those adopted by the respective local sage-grouse working groups’ conservation plans.



FIRST CLASS MAIL
UNITED STATES POSTAGE AND FEES PAID
U.S. DEPARTMENT OF THE INTERIOR
PERMIT NO. G-76

BLM Lander Field Office
ATTN: RMP Team Leader
P.O. Box 589
Lander, WY 82520