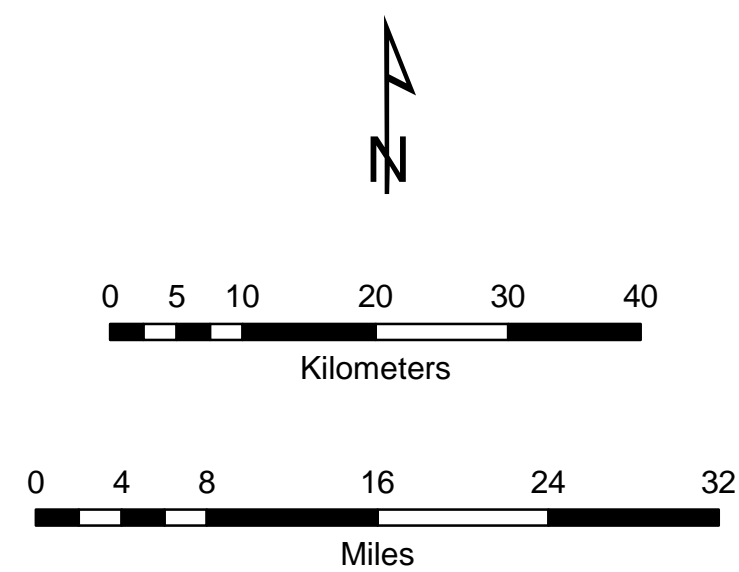
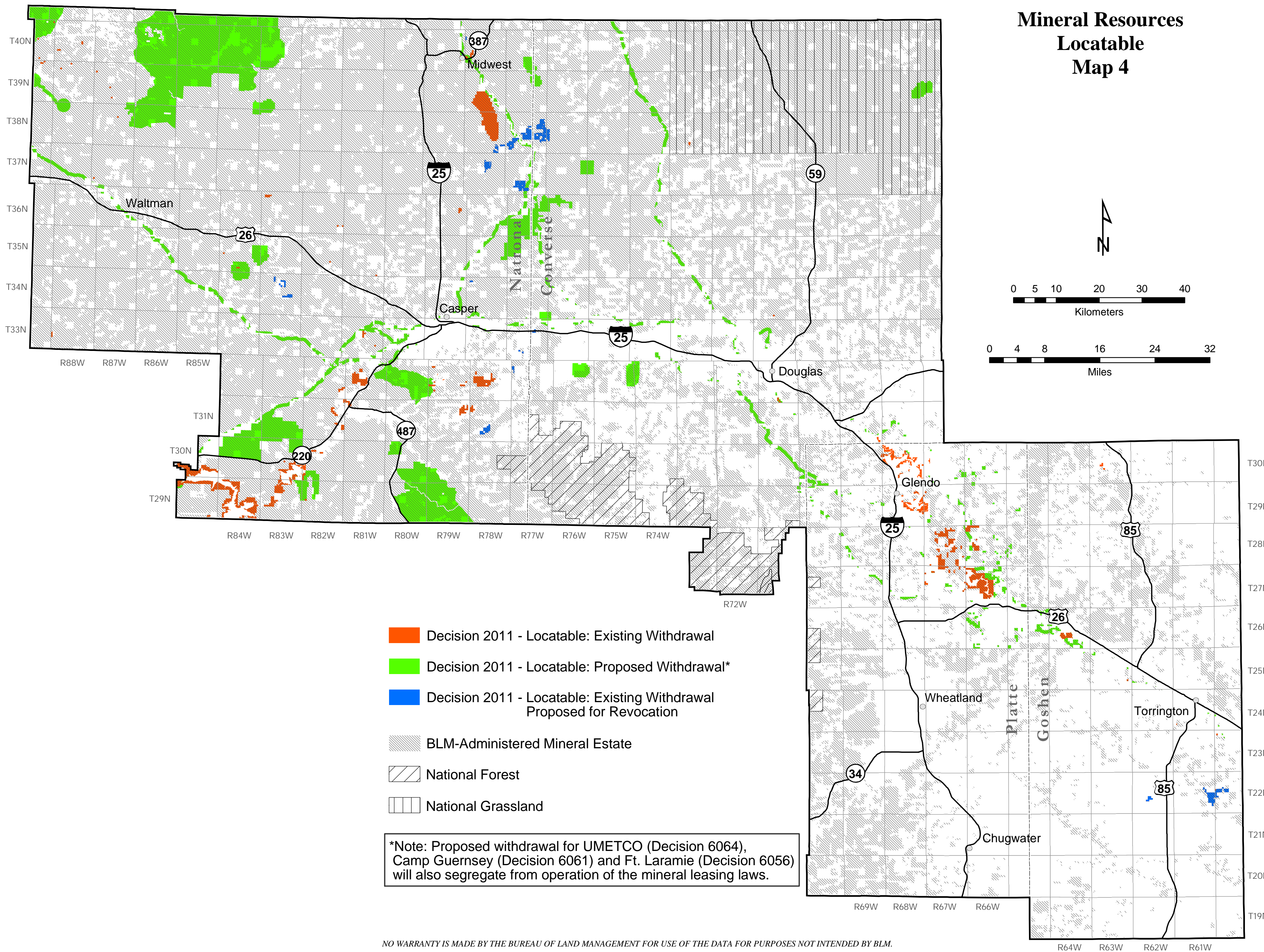


Mineral Resources Locatable Map 4



- Decision 2011 - Locatable: Existing Withdrawal
- Decision 2011 - Locatable: Proposed Withdrawal*
- Decision 2011 - Locatable: Existing Withdrawal Proposed for Revocation
- BLM-Administered Mineral Estate
- National Forest
- National Grassland

*Note: Proposed withdrawal for UMETCO (Decision 6064), Camp Guernsey (Decision 6061) and Ft. Laramie (Decision 6056) will also segregate from operation of the mineral leasing laws.