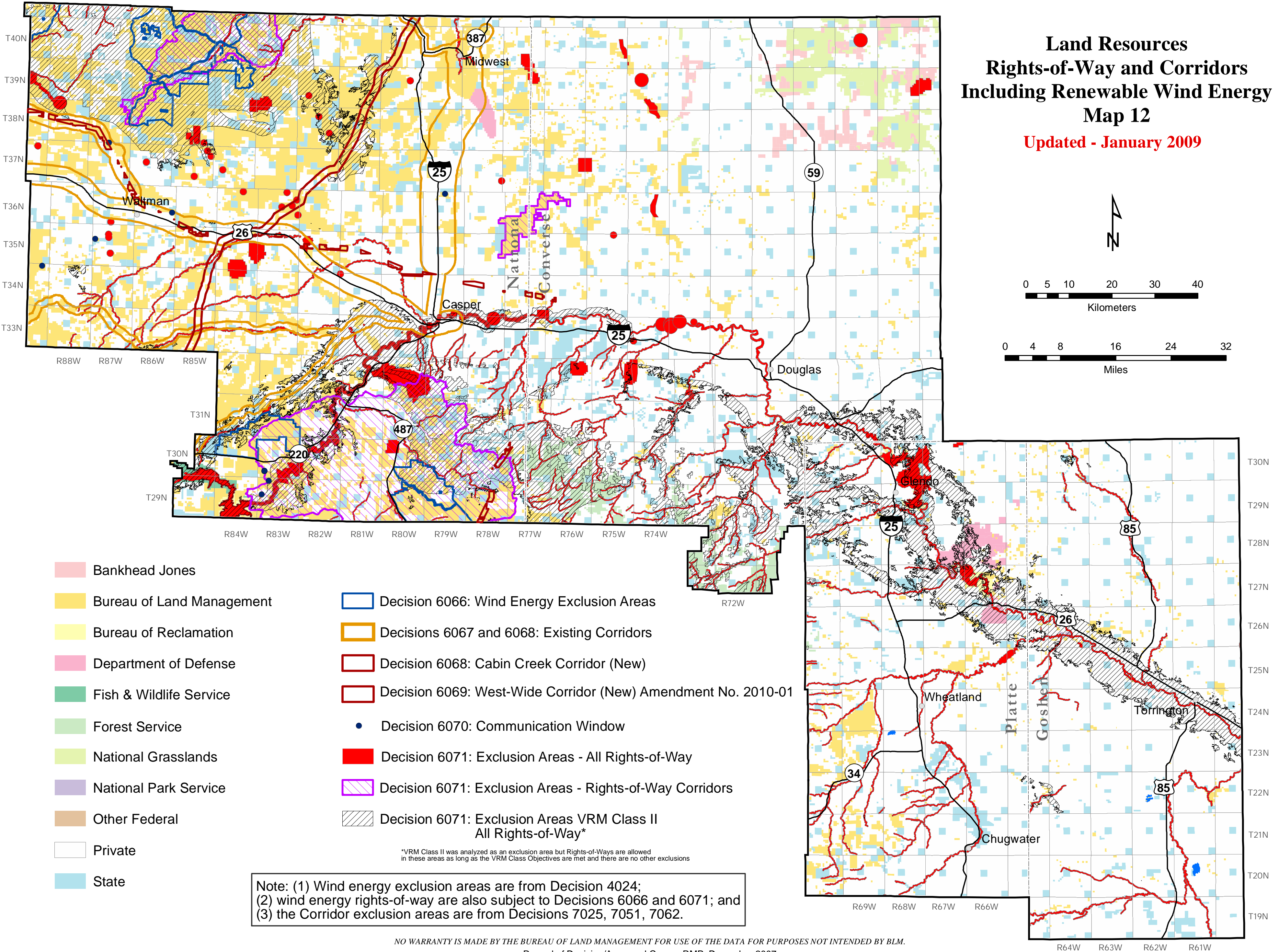


Land Resources Rights-of-Way and Corridors Including Renewable Wind Energy Map 12

Updated - January 2009



- Bankhead Jones
- Bureau of Land Management
- Bureau of Reclamation
- Department of Defense
- Fish & Wildlife Service
- Forest Service
- National Grasslands
- National Park Service
- Other Federal
- Private
- State
- Decision 6066: Wind Energy Exclusion Areas
- Decisions 6067 and 6068: Existing Corridors
- Decision 6068: Cabin Creek Corridor (New)
- Decision 6069: West-Wide Corridor (New) Amendment No. 2010-01
- Decision 6070: Communication Window
- Decision 6071: Exclusion Areas - All Rights-of-Way
- Decision 6071: Exclusion Areas - Rights-of-Way Corridors
- Decision 6071: Exclusion Areas VRM Class II All Rights-of-Way*

*VRM Class II was analyzed as an exclusion area but Rights-of-Ways are allowed in these areas as long as the VRM Class Objectives are met and there are no other exclusions

Note: (1) Wind energy exclusion areas are from Decision 4024;
(2) wind energy rights-of-way are also subject to Decisions 6066 and 6071; and
(3) the Corridor exclusion areas are from Decisions 7025, 7051, 7062.