

**Scoping Notice and Request for Public Input**  
**on**  
**South Brokenback and Upper Nowood Motorized Travel Management**

**PROPOSED ACTION**

The Bureau of Land Management, Worland Field Office is developing a travel management activity plan for the South Brokenback and Upper Nowood area. This activity plan will implement the motorized travel designation decisions in the Washakie Resource Management Plan (RMP).

The RMP identified an area within the West Slope of the Bighorns where motorized vehicles would be “limited to designated roads and trails.” An objective in the Washakie RMP is: *“to enhance and expand opportunities for recreation while intensively managing areas with high recreation values.”* The travel management area is shown on the attached map.

Specific routes to be designated for vehicle travel and actions necessary to implement the designation will be determined through this scoping process, a public open house meeting, and an environmental assessment. Topics to be considered in the plan include maps, signs and markers, education and information, barriers, rehabilitation, monitoring, enforcement and maintenance.

**IDENTIFIED GOALS**

- Provide access for a wide variety of recreation activities on public lands.
- Provide administrative, commercial, and private land access where necessary.
- Protect resource values and prevent the creation of new, unauthorized routes.
- Provide clear information for the public to understand and comply with route designations.
- Identify future planning needs and opportunities related to travel management.

**National Environmental Policy Act**

To comply with NEPA and the Council on Environmental Quality regulations, which implement NEPA, the BLM is required to prepare an environmental analysis. The environmental document will serve several purposes. It will provide both the public and governmental agencies with information about the potential environmental consequences of the project and alternatives; identify all practicable means to avoid or minimize environmental harm from the project and alternatives; and provide the responsible official with information upon which to make an informed decision regarding the project. The document will be prepared by an Interdisciplinary Team (IDT) of BLM resource experts.

One essential element of the NEPA process is scoping. Scoping activities are initiated early in the process to:

- identify reasonable alternatives to be evaluated in the environmental analysis;
- identify environmental issues of concern related to the proposed sale;
- determine the depth of analysis for issues addressed in the environmental document; and
- identify potential mitigation.

This scoping statement has been prepared to describe means by which governmental agencies, the general public, and other interested parties may participate in and contribute to the analysis process. Public input is important in establishing the scope of analysis for any NEPA document, and the BLM encourages public participation.

### **Scoping Meeting**

A public meeting will be held to provide interested members of the public with further information about the proposal and their opportunities to submit scoping comments to BLM.

The meetings will be conducted in open-house format. The public will have the opportunity to meet with BLM personnel regarding the specifics of the proposal. Maps and other documents will be available for review. Comment forms will be provided. Comments can be submitted at the meeting, or sent in later.

The meeting will be held at the following time and location:

March 22, 2006 4:00 – 7:00 PM BLM – Worland Field Office 101 S. 23rd Worland, WY
--

### **Timing Requirements**

Public input is important in establishing the level and scope of the analysis. The public is encouraged to participate throughout the environmental analysis process to help in identifying the level of analysis needed, alternatives to the proposed action, other issues or concerns that should be analyzed, mitigation opportunities, and any other comments or ideas to help ensure the completeness of the analysis process.

Comments are due by **April 10, 2006**. Please submit your comments to:

BLM – Worland Field Office  
ATTN: Aaron Kania, Project Manager  
PO Box 119  
Worland, WY 82401

307.347.5170

E-mail: [Worland\\_wymail@blm.gov](mailto:Worland_wymail@blm.gov)

# South Brokenback Road Management Area

— Proposed Boundary

Land Management

■ Bureau of Land Management

■ Forest Service

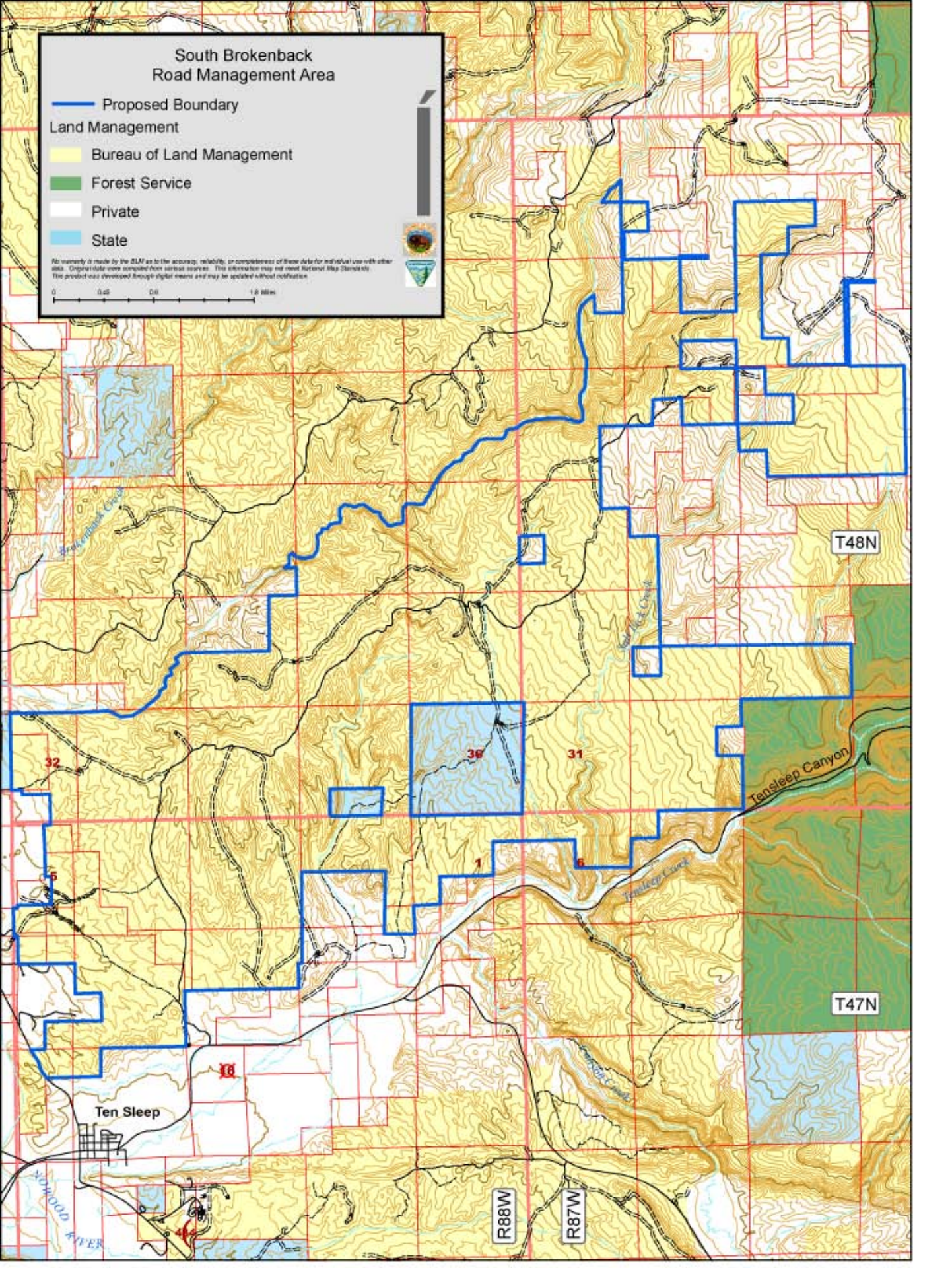
■ Private

■ State



No warranty is made by the BLM as to the accuracy, reliability, or completeness of these data for individual use with other data. Original data were compiled from various sources. This information may not meet National Map Accuracy Standards. The product was developed through digital means and may be updated without notification.

0 0.25 0.5 1.0 Miles



# Upper Nowood Road Management Area

- Proposed Boundary
- Land Management
  - Bureau of Land Management
  - Forest Service
  - Private
  - State

No warranty is made by the DIRM as to the accuracy, reliability, or completeness of these data for individual use with other data. Original data were compiled from various sources. This information may not meet National Map Standards. This product was developed through digital means and may be updated without notification.

