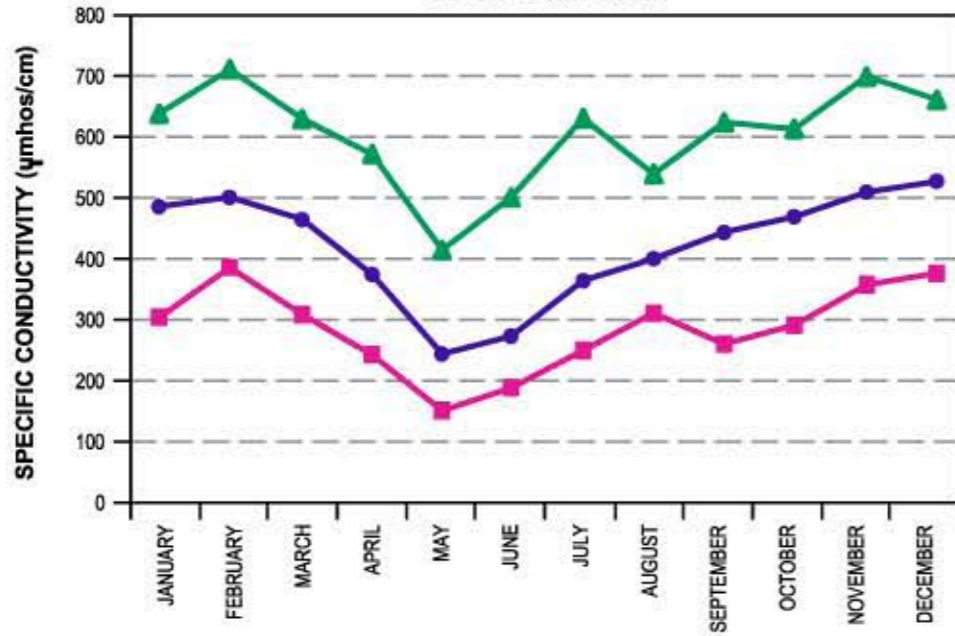
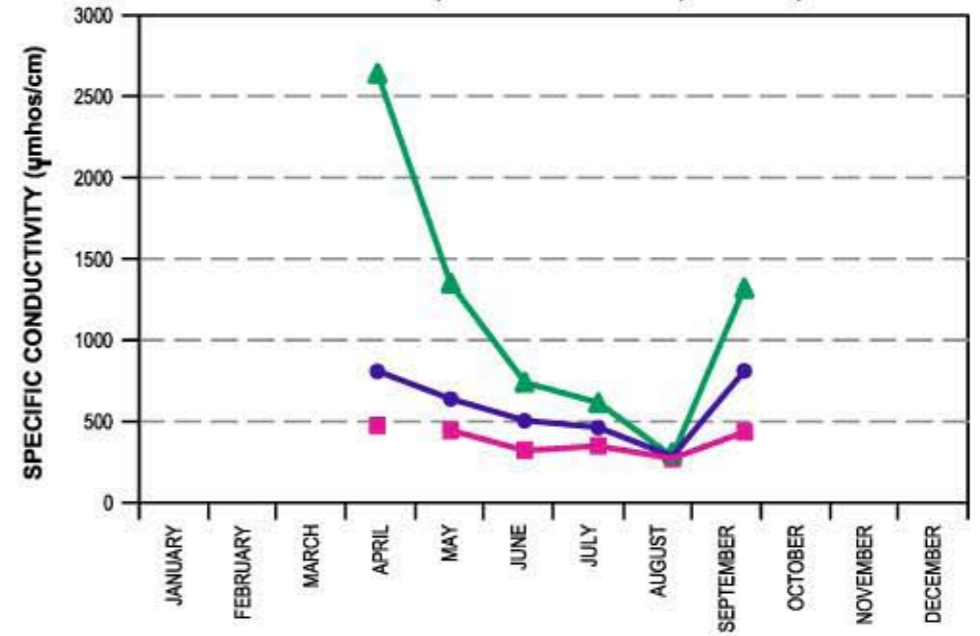


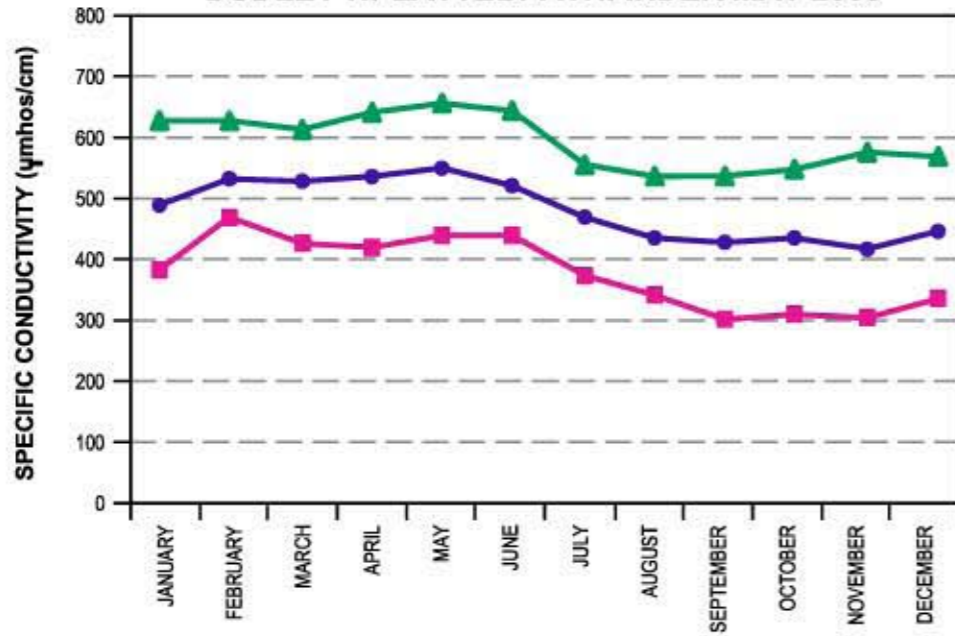
**NORTH PLATTE RIVER ABOVE SEMINOE  
USGS 06630000**



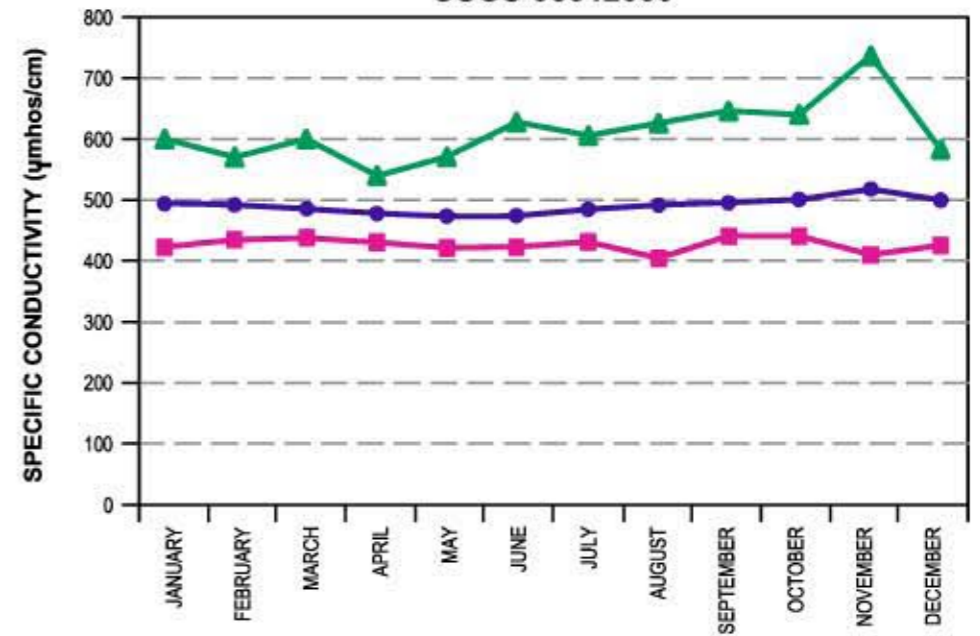
**SEMINOE RESERVOIR  
USGS 06630350, USGS 0635500, AMP-2, AMP-3**



**NORTH PLATTE ABOVE PATHFINDER RESERVOIR  
USGS 06636000 AUGUST 1969 - JULY 1989  
DUDLEY NPLATTEPATHFINDER MAY 2003**



**NORTH PLATTE RIVER AT ALCOVA  
USGS 06642000**



**LEGEND**

- AVERAGE
- MINIMUM
- ▲— MAXIMUM

NOTE: THERE IS NO WATER QUALITY DATA AVAILABLE FOR KORTES RESERVOIR OR MIRACLE MILE  
SOURCE: HYDRO GEO CONSULTANTS

**Seminoe Road Gas Development Project EIS  
FIGURE 34  
SUMMARY OF SURFACE WATER SALINITY DATA**