

## **Scoping Notice**

### **Boulder Lake North Campground Improvement Project**

The Bureau of Land Management (BLM), Pinedale Field Office is preparing an environmental assessment (EA) for the improvement of the Boulder Lake Common Allotment. The BLM is specifically soliciting input on improvement of this allotment for recreation and cultural resources.

#### **INTRODUCTION**

The Boulder Lake Common Allotment (BLCA) is a common use allotment encompassing approximately 5055 total acres (4900 federal, 155 private) in Sublette County approximately 7 miles southeast of Pinedale (see Map 1-1). The legal location of the project is T33 R108 S 12, 13, 14, 23, 24, 25, and 26, and T33 R107 S 18, 19, 29, and 30. Bureau of Land Management-administered public lands in the BLCA are primarily used for livestock grazing, wildlife habitat, and recreation. Four individuals share the livestock grazing use within the allotment on four grazing permits totaling 835 AUMs. Wildlife uses in the allotment include crucial winter range for mule deer and moose, mule deer parturition range, migration routes for pronghorn and mule deer, sage grouse breeding, nesting and brood rearing habitat, pygmy rabbit habitat, and nesting and foraging habitat for raptors and other migratory birds. Recreational use in the allotment includes camping, fishing, boating, hiking, and off-highway vehicle (OHV) use. There are also historic sites located in the allotment including John Fremont's camp and Stoke's Crossing. Cultural resources have been impacted by direct and indirect actions and BLM is mandated to mitigate these effects.

#### **PURPOSE AND NEED**

The purpose of this project is to enhance the Boulder Lake North Campground for recreation and cultural resources and treat 100 acres of non-native invasive weeds.

Existing conditions in the analysis area present opportunities for improvements. The following needs for the proposed action were identified:

1. There is a *need* to decrease livestock and illegal off-highway vehicle (OHV) pressure around critical recreational and historic sites.
2. There is a *need* to treat cheatgrass in the allotment.

The goals and objectives are:

- Alleviate conflicts between livestock and recreationists by minimizing the presence of livestock at significant recreation site.
- Alleviate the conflicts of OHV use and cultural and historic resources by eliminating the illegal OHV use at the site.
- Provide alternative water for livestock in the Boulder Lake Common Allotment
- Enhance regional tourism by improving and maintaining the recreational setting for visitors and reducing resource conflicts
- Inform and educate the public about historic and prehistoric sites along Boulder Lake
- Enhance the protection of archaeological and historic resources known for the project area

- Improve the recreational setting of the North Boulder Lake Campground.
- Reduce the amount of the non-native invasive species, cheatgrass, in the allotment.
- Maintain open, honest, and constructive communication among the interested and affected parties including the public. Foster understanding, involvement, and cooperation in resource management.

This responsibility and authority evolves from a series of legal mandates, including the National Historic Preservation Act, the Archaeological Resources Protection Act, the Taylor Grazing Act, the National Environmental Policy Act (NEPA), the Wild and Free-Roaming Horse and Burro Act, the Federal Land Policy and Management Act (FLPMA), and the Public Rangelands Improvement Act.

### **PROPOSED ACTION**

The proposed action includes five activities:

- Expand fence around the North Boulder Lake Campground
- Remove the existing campground fence
- Block motorized access to the beach with expanded fence and boulder placement
- Drill and equip a new well in the north portion of Boulder Lake Common Allotment to provide livestock water
- Treat 100 acres of Cheatgrass with Journey©.

The BLM would like your comments relative to improvement on the BLCA. The above material will be available for review at the Pinedale Field Office.

If you are interested in commenting regarding this proposal, we request you respond by sending your written or e-mail comments or concerns by September 15<sup>th</sup>, 2009.

Written comments should be mailed to:

Bureau of Land Management Attn. Cara Farr, Pinedale Field Office, PO Box 768, Pinedale, WY 82941

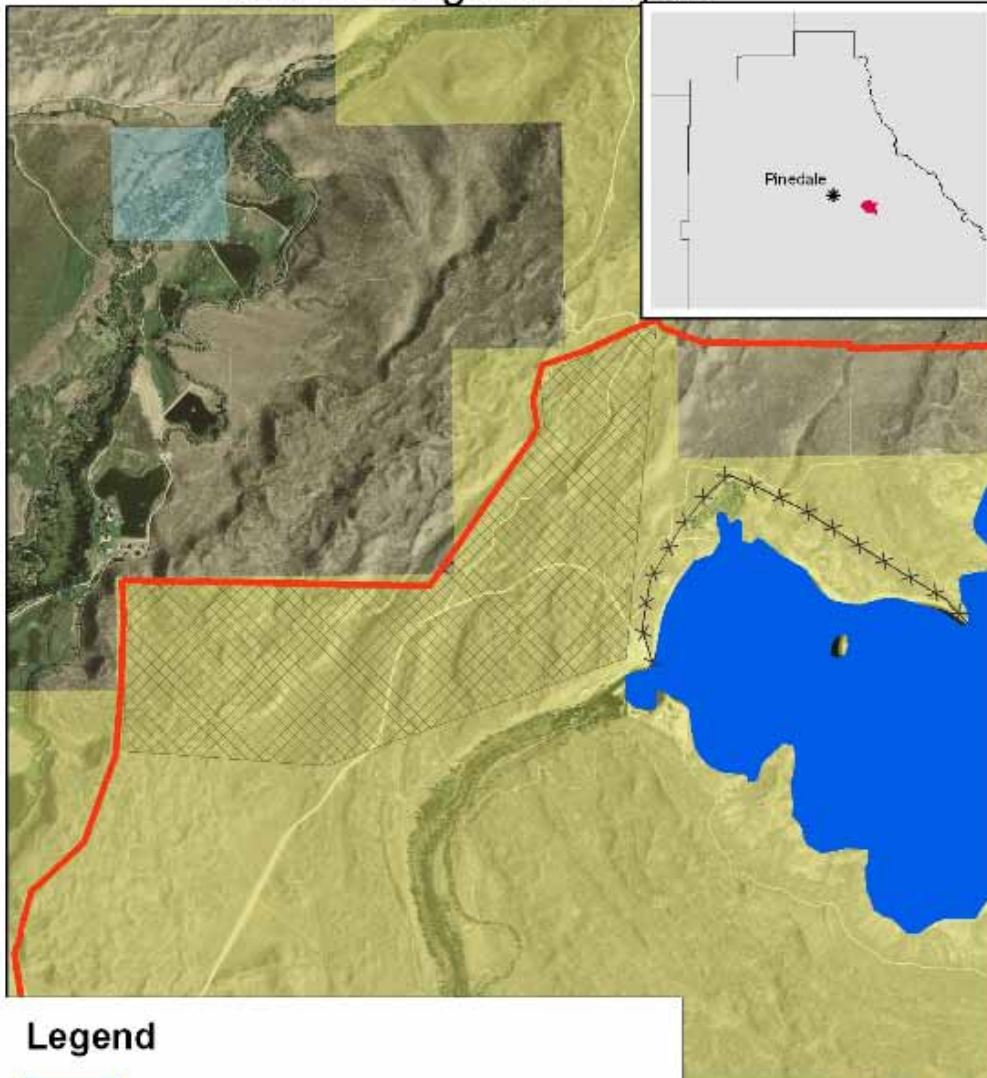
Or written comments can be hand delivered to:

Bureau of Land Management Attn. Cara Farr, Pinedale Field Office, 1625 West Pine, Pinedale, WY

Comments may also be e-mailed to: [Cara\\_Farr@blm.gov](mailto:Cara_Farr@blm.gov)

Your comments are important and will be considered in the environmental analysis process. If you do comment, we will add your name to a mailing list for this proposal in order to provide you future information regarding the EA.

# Boulder Lake North Campground and Cheatgrass Project



## Legend

-  Boulder Lake
-  Boulder Lake Common Allotment Boundary
-  New Campground Fence
-  Proposed Water Well
-  Cheatgrass Treatment Area



## Map Disclaimer

\* No warranty is made by the Bureau of Land Management for use of map data for purposes otherwise intended by the BLM.

\* All actions listed as pending in map legend are subject to change.

