

June 13, 2005

SCOPING NOTICE
Absaroka Ridge 3D Geophysical Project

Dear Reader:

Gary Williams Company and PGS Onshore Inc. (PGS) have filed a Notice of Intent (NOI) to Conduct Geophysical Operations with the Bureau of Land Management (BLM), Kemmerer Field Office, for a geophysical project on public lands within Lincoln County, Wyoming. The project is located in multiple Sections within Townships 22 and 23 North, Ranges 116 and 117 West, 6th Principal Meridian. The attached document serves as notice of the beginning of the environmental analysis process to fulfill the requirements of the National Environmental Policy Act. If you are interested in participating in the process and have concerns, issues, or alternatives you would like to see addressed, please respond with your written comments by **July 25, 2005**.

Send written comments to:

Address: James Roberts
 Kemmerer Field Office
 312 HWY 189 N.
 Kemmerer, Wyoming 83101

Email: Kemmerer_wymail@blm.gov
 (Please reference the Absaroka Ridge 3D Project in the subject field)

Written comments in response to this notice, including the names and addresses of respondents, will be available for public review at the BLM Kemmerer Field Office during regular business hours (7:45 a.m. thru 4:30 p.m.) Monday thru Friday (except federal holidays) after the comment period closes. These comments may be published as part of the environmental process although individual respondents may request confidentiality. If you wish to withhold your name and/or address from public view or from disclosure under the Freedom of Information Act, you must state this prominently at the beginning of your written comment. Such requests will be honored to the extent allowed by law. All submissions from organizations or businesses will be made available for public inspection in their entirety. You have been included in this mailing because you previously indicated interest in receiving information on actions of this type. Absence of response in this matter will remove you from further communications regarding this project.

If you have any questions regarding this project, please contact James Roberts at (307) 828-4506.

Sincerely,

Mary Jo Rugwell
Field Manager

Enclosure

Bureau of Land Management
Kemmerer Field Office

SCOPING NOTICE
Absaroka Ridge 3D Geophysical Project

Description of Project

PGS Onshore, on behalf of Gary-Williams Production Co., has filed a Notice of Intent (NOI) to Conduct Geophysical Operations with the Bureau of Land Management (BLM), Kemmerer Field Office.

The proposed project is located approximately 5 miles northwest of the town of Kemmerer and continues west to the edge of Fossil Butte National Monument. The project area extends from approximately HWY 30 at the southern extent to the Kemmerer Reservoir on the northern extent. The project would encompass about 51 square miles total area. The project area contains approximately 36 square miles of federal land, about 3.5 square miles of state land, and approximately 11.5 square miles of privately owned land within Townships 22 and 23 North, Ranges 116 and 117 West, 6th Principal Meridian (see attached map). Those portions of the project occurring on state and private lands are not subject to BLM authorization and would be permitted separately by PGS Onshore.

The proposed project would utilize a number of vehicles (i.e. trucks, vans, etc.), a helicopter, ATVs, and support equipment tractor trailers and fuel trucks. The helicopter and personnel on foot would be used to deploy recording equipment to predetermined locations on the receiver lines. The receiver station interval would be 110 feet with lines 880 feet apart. The source station intervals will be 246 feet, with source lines 1320 feet apart.

The proposed project would use shot holes as an energy source where terrain allows. Shot holes will be drilled with either the truck mounted drills (where terrain allows) or heliportable drills in steep slopes and in areas with resource concerns.

Relationship to Existing Plans and Documents

Resource Management Plan – The document that directs management of the BLM administered lands within the analysis area is the Kemmerer Resource Management Plan (RMP, June 1986). The objective for management of geophysical exploration is to provide opportunity for exploration of mineral resources and collection of geophysical data, while protecting resource values.

Use Authorization – An approved Notice of Intent to Conduct Geophysical Operations is subject to the Terms and Conditions for Notice of Intent to Conduct Geophysical Exploration. Other conditions of approval to protect important resources may be added to the authorization if analysis proves such measures would further reduce environmental impact.

National Environmental Policy Act

On reviewing the proposal from PGS Onshore, the BLM has determined that an environmental analysis is required to determine whether impact for the Proposed Action would be considered significant. Additionally, NEPA requires that a No Action alternative be considered in all

environmental documents. This will allow a comparison of the economic and environmental consequences of all alternatives. Under the No Action alternative, geophysical operations would not occur in the project area.

Identified Resource Management Issues, Concerns, and Opportunities

The following issues and concerns have been identified by the BLM to date. It is not meant to be an all-inclusive list, but rather a starting point for public input and a means of identifying the resource disciplines needed to conduct the analysis.

Raptor nesting habitat
Greater sage-grouse habitat
Big game winter ranges
Steep slopes
Riparian areas
Cultural resources including Sublette Cutoffs of the Oregon-California Trail
Native American religious sites
Paleological rock outcrops
Abandoned mines
Residential areas
Underground utilities and other facilities
Road crossings
Weeds
Hunting areas and other recreation
Grazing
Sensitive soils
Sensitive plant species
Steep slopes
Threatened and Endangered Species

Timing Needs or Requirements

Public input is important in establishing the level and scope of the analysis. The public is encouraged to participate in the environmental analysis process to help identify the level of analysis needed, alternatives to the proposed action, other issues or concerns that should be analyzed, mitigation opportunities, and any other comments or ideas to help ensure the completeness of the analysis process.

Please submit your comments by July 25, 2005. Written Comments should be mailed to:

Address: James Roberts
Kemmerer Field Office
312 HWY 189 N.
Kemmerer, Wyoming 83101

Email: Kemmerer_wymail@blm.gov
(Please reference the Absaroka Ridge 3D Project in the subject field)

Public Participation

The following individuals and organizations will receive a copy of this scoping statement:

Government Offices

Bureau of Land Management, Wyoming State Office (910, 912, 920,930)
Office of the Governor
U.S. Department of the Army, Corps of Engineers
U.S. Fish and Wildlife Service
Wyoming State Clearinghouse
Wyoming Department of Environmental Quality (Land, Air, and Water)
Wyoming Oil and Gas Conservation Commission
Wyoming Game and Fish Department (Cheyenne, Green River)
Office of State Lands and Investments
Wyoming State Planning Office
Wyoming State Geological Survey
Wyoming State Engineer
Wyoming Department of Revenue
Wyoming Water Development Commission
Bureau of Reclamation

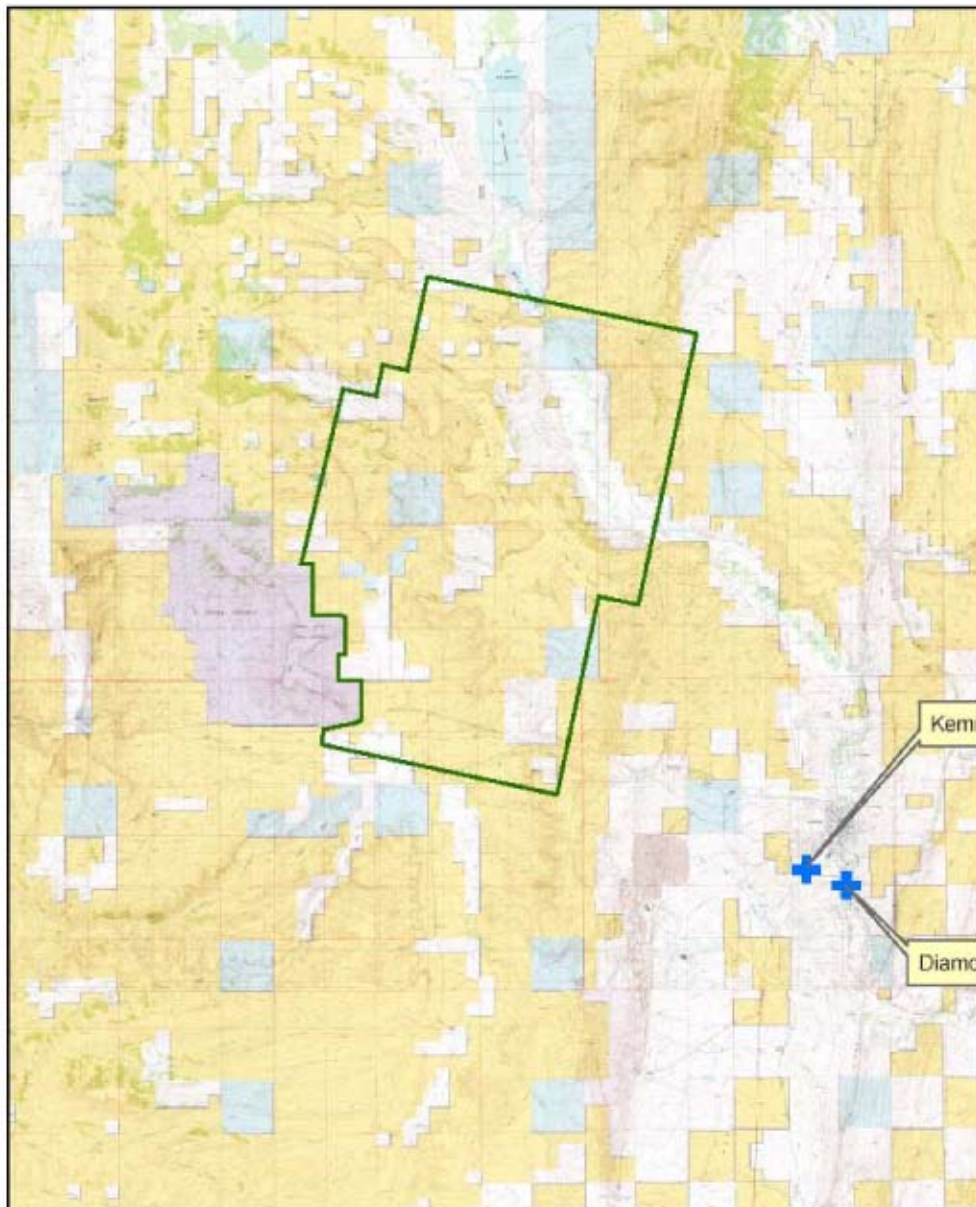
Elected and Other Officials

Mayor of Kemmerer, Diamondville, Frontier, and Opal
State Senators:
State Representatives:
Lincoln County Commissioners
Lincoln County Planner
Lincoln County Libraries

Public Land Users and User Groups

Grazing permittees for the Fossil, Twin Creek, Rock Creek, Fish Creek, and Quaken Asp Canyon Allotments
Affected Federal oil and gas lessee holders: Kerr-McGee Rocky Mountain Corp., John P. Strang, Hallador Petroleum LLP., and Questar Exploration and Production Co.

Absaroka Ridge 3D



Kemmerer, WY

Diamondville, WY

0 1.25 2.5 5 Miles



NOTICE – NOTICE – NOTICE
Due to Federal and State Land Exchanges or Sales, this map may not accurately reflect Land Ownership Status. Please consult the local BLM Field Office or USFS Ranger District for current updates or ownership status.

NO WARRANTY IS MADE BY THE BUREAU OF LAND MANAGEMENT FOR USE OF THE DATA FOR PURPOSES NOT INTENDED BY BLM.

Legend

+ kfocities83 point