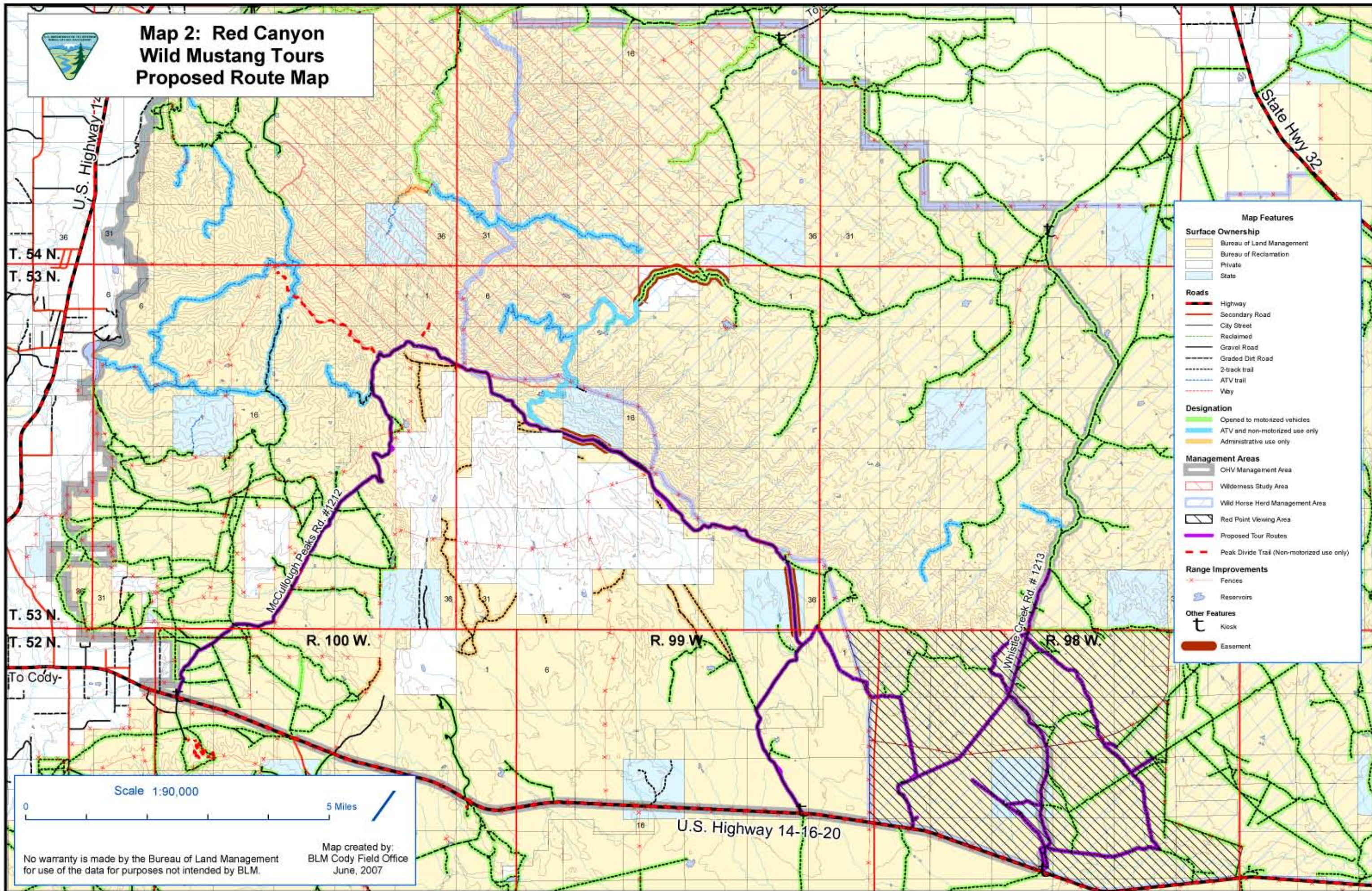




# Map 2: Red Canyon Wild Mustang Tours Proposed Route Map



**Map Features**

**Surface Ownership**

- Bureau of Land Management
- Bureau of Reclamation
- Private
- State

**Roads**

- Highway
- Secondary Road
- City Street
- Reclaimed
- Gravel Road
- Graded Dirt Road
- 2-track trail
- ATV trail
- Wey

**Designation**

- Opened to motorized vehicles
- ATV and non-motorized use only
- Administrative use only

**Management Areas**

- OHV Management Area
- Wilderness Study Area
- Wild Horse Herd Management Area
- Red Point Viewing Area
- Proposed Tour Routes
- Peak Divide Trail (Non-motorized use only)

**Range Improvements**

- Fences
- Reservoirs

**Other Features**

- Kiosk
- Easement

Scale 1:90,000

0 5 Miles

No warranty is made by the Bureau of Land Management for use of the data for purposes not intended by BLM.

Map created by:  
BLM Cody Field Office  
June, 2007