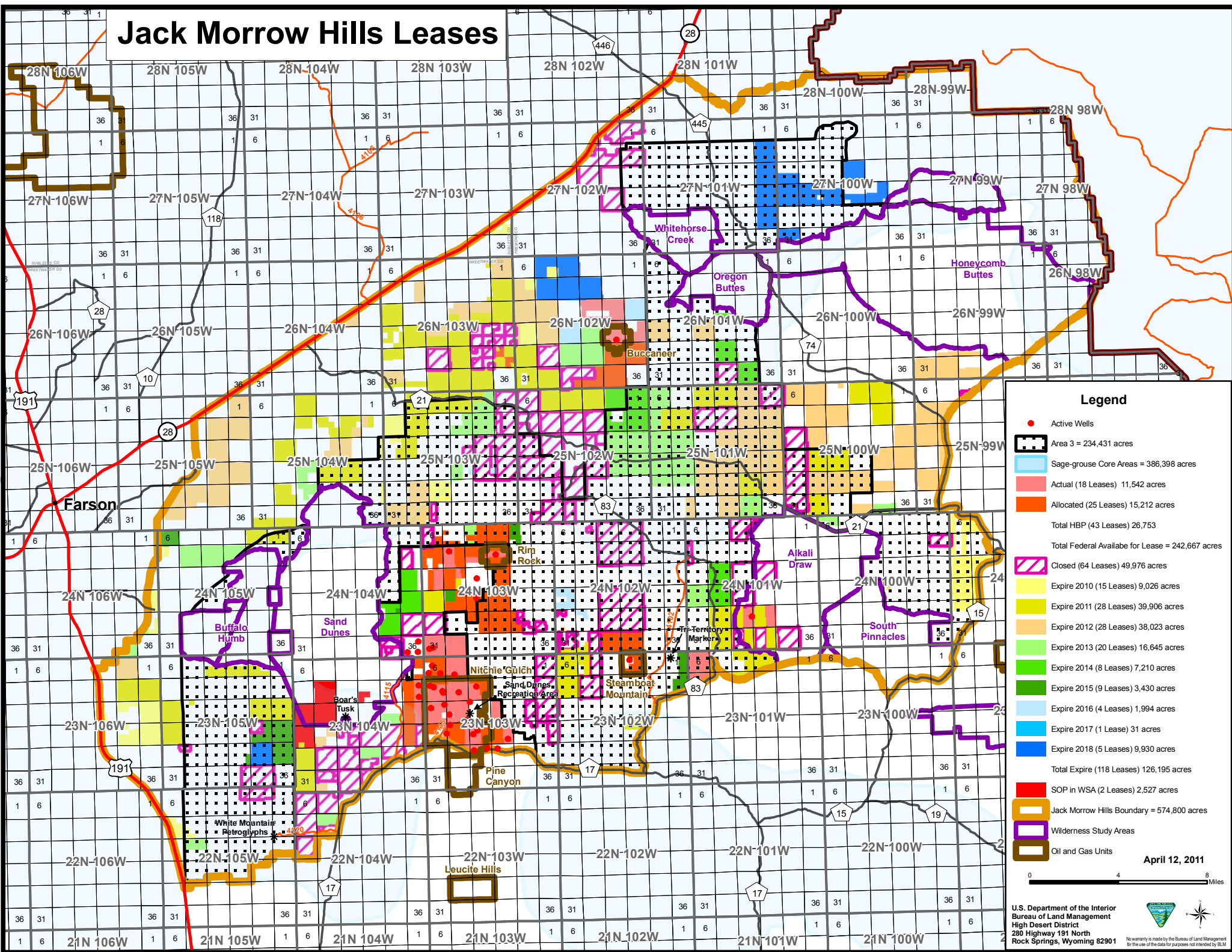


Jack Morrow Hills Leases



Legend

- Active Wells
- Area 3 = 234,431 acres
- Sage-grouse Core Areas = 386,398 acres
- Actual (18 Leases) 11,542 acres
- Allocated (25 Leases) 15,212 acres
- Total HBP (43 Leases) 26,753
- Total Federal Available for Lease = 242,667 acres
- Closed (64 Leases) 49,976 acres
- Expire 2010 (15 Leases) 9,026 acres
- Expire 2011 (28 Leases) 39,906 acres
- Expire 2012 (28 Leases) 38,023 acres
- Expire 2013 (20 Leases) 16,645 acres
- Expire 2014 (8 Leases) 7,210 acres
- Expire 2015 (9 Leases) 3,430 acres
- Expire 2016 (4 Leases) 1,994 acres
- Expire 2017 (1 Lease) 31 acres
- Expire 2018 (5 Leases) 9,930 acres
- Total Expire (118 Leases) 126,195 acres
- SOP in WSA (2 Leases) 2,527 acres
- Jack Morrow Hills Boundary = 574,800 acres
- Wilderness Study Areas
- Oil and Gas Units

April 12, 2011

0 4 8 Miles