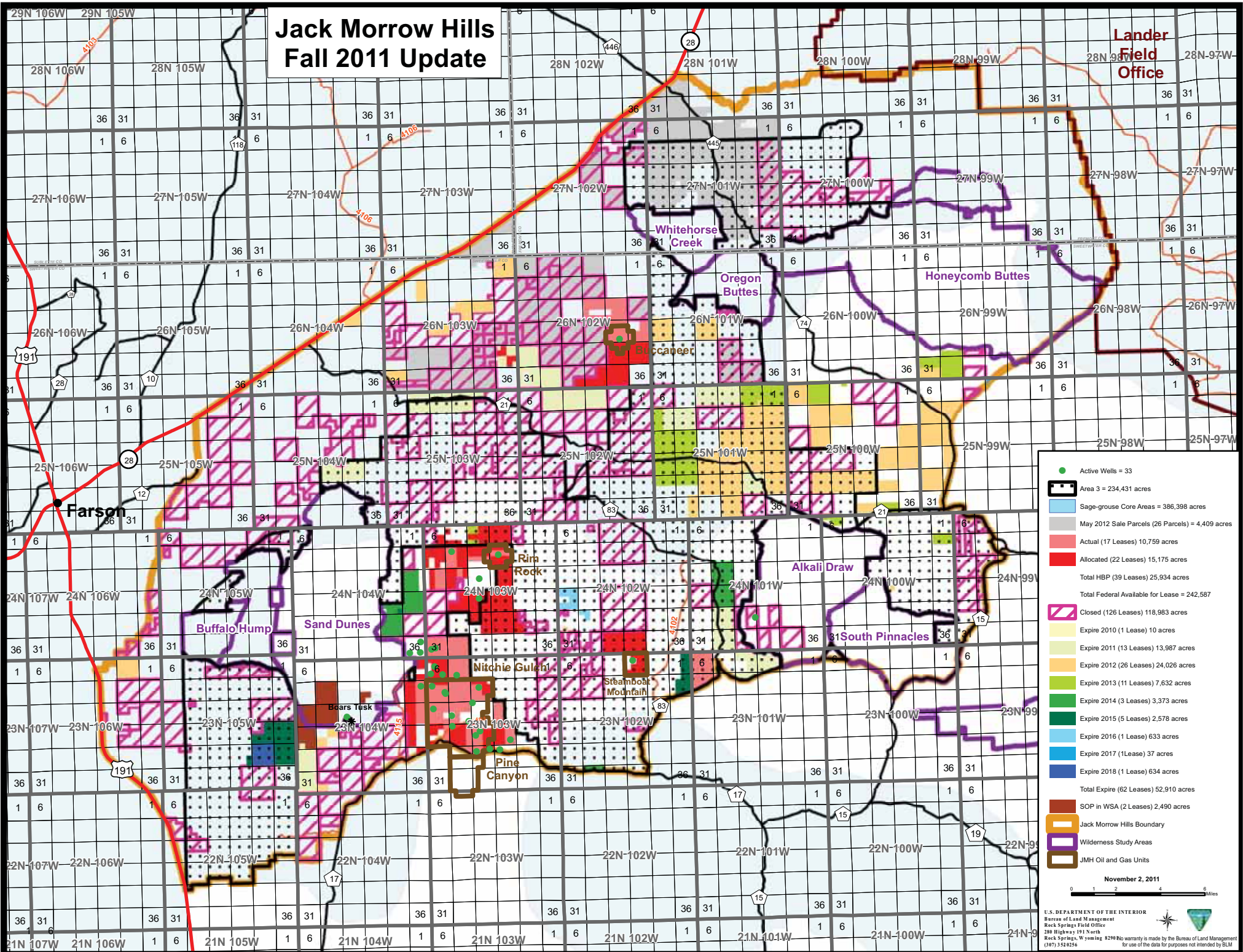


# Jack Morrow Hills Fall 2011 Update

Lander  
Field  
Office



- Active Wells = 33
- Area 3 = 234,431 acres
- Sage-grouse Core Areas = 386,398 acres
- May 2012 Sale Parcels (26 Parcels) = 4,409 acres
- Actual (17 Leases) 10,759 acres
- Allocated (22 Leases) 15,175 acres
- Total HBP (39 Leases) 25,934 acres
- Total Federal Available for Lease = 242,587
- Closed (126 Leases) 118,983 acres
- Expire 2010 (1 Lease) 10 acres
- Expire 2011 (13 Leases) 13,987 acres
- Expire 2012 (26 Leases) 24,026 acres
- Expire 2013 (11 Leases) 7,632 acres
- Expire 2014 (3 Leases) 3,373 acres
- Expire 2015 (5 Leases) 2,578 acres
- Expire 2016 (1 Lease) 633 acres
- Expire 2017 (1 Lease) 37 acres
- Expire 2018 (1 Lease) 634 acres
- Total Expire (62 Leases) 52,910 acres
- SOP in WSA (2 Leases) 2,490 acres
- Jack Morrow Hills Boundary
- Wilderness Study Areas
- JMH Oil and Gas Units

November 2, 2011  
0 1 2 4 6 Miles