

Projected Population Increases

(not including temporary workers)

4 Main Types of In-Migration

- 1. Long-term Gas Industry Workers (Production)**
- 2. Shorter-term Gas Workers (Drilling)**
- 3. Non-Industry workers needed to support Gas Industry (Waitresses, Housing Const., etc).**
- 4. Natural Increase (about 23% every 10 years)**

1. Long-Term Gas Workers

● 750-1,000 Long-Term Production Jobs For Jonah and PAPA Fields.

- All moving to Sublette County Area. Includes staff, pumpers, maintenance, etc...
- Likely split between N. County and S. County, due to costs of housing.
- Most Moving here between Now and 2018
- Most Jobs available for 40+ Years.
- Workers will tend to be younger... 75% to bring spouses/ 2 children

875 Production Jobs = 2,869 Residents (924 Children)

2. Short-Term Gas Workers

- **Currently: 1,250 Temp. Workers Staying in Sublette Co. Likely to Increase to 1,500**

- **According to Survey, 15-30% of non-residents will move full-time to area. Most likely split between N. County and S. County.**
- **Jobs will last until 2018, then decline. Many likely to move after work is over.**
- **75% to bring spouses. Older 30's/40's. Median of 2 Kids under 18**
- **Housing Availability seen as key determinant of short-term migration**

- **Low Estimate**

- **200 Short Term Workers=651 Residents (210 Children)**

- **Medium Estimate**

- **500 Short Term Workers=1,628 Residents (526 Children)**

- **High Estimate**

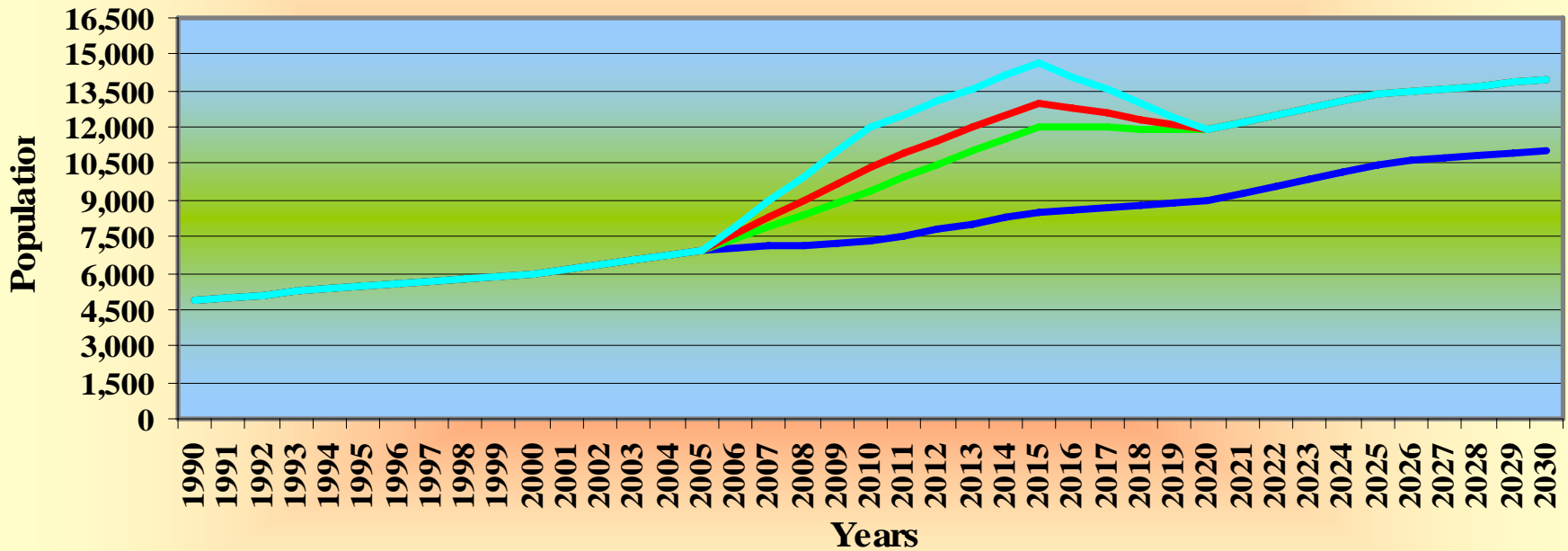
- **1000 Short-Term Workers=3,256 Residents (1,051 Children)**

3. Non-Industry Migrants

- Workers needed to Support Industry Migrants (grocery store, building houses, meter readers, etc.)
- Not as well paying as Gas Industry Jobs.
- Regional IMPLAN analysis indicates **1.38 jobs created for every Gas Industry Worker**. Jobs to be located throughout SW Wyoming.
- Assuming 40% of Spouses of Industry workers will fill many of these jobs.
- Assuming the average family size is .5 children
- Less likely to have spouses/Children. Likely to be younger/less educated.

Population

Sublette County Population



— No impact (natural increase) — Low Projected Impact — Medium Projected Impact — High Projected Impact

Natural Increase Assumes a 23% increase every 10 years.

Low # of Development Residents assumes 200 workers to Sublette County

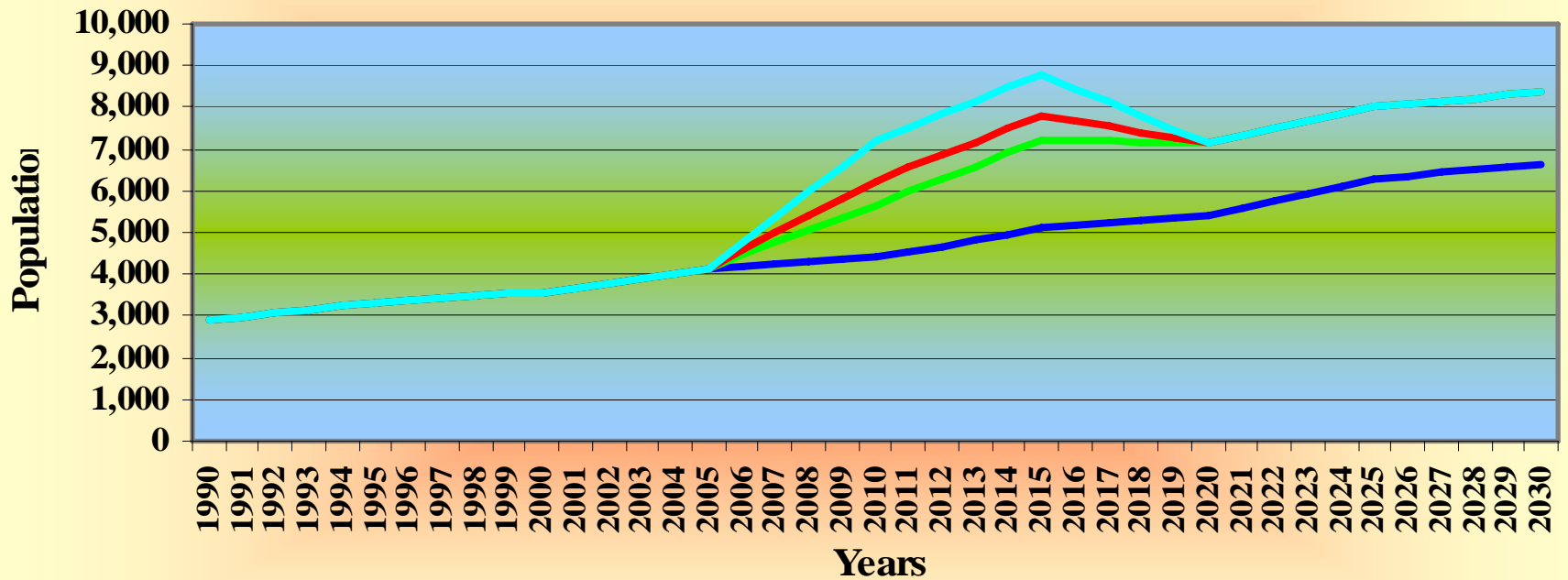
Medium # of Development Residents assumes 500 workers to Sublette County

high # of Development Residents assumes 1000 workers to Sublette County

of Production Residents assumes 875 production workers to Sublette County

Population (cont.)

South Sublette County Population



— No impact (natural increase) — Low Projected Impact — Medium Projected Impact — High Projected Impact

Natural Increase Assumes a 23% increase every 10 years.

Low # of Development Residents assumes 200 workers to Sublette County

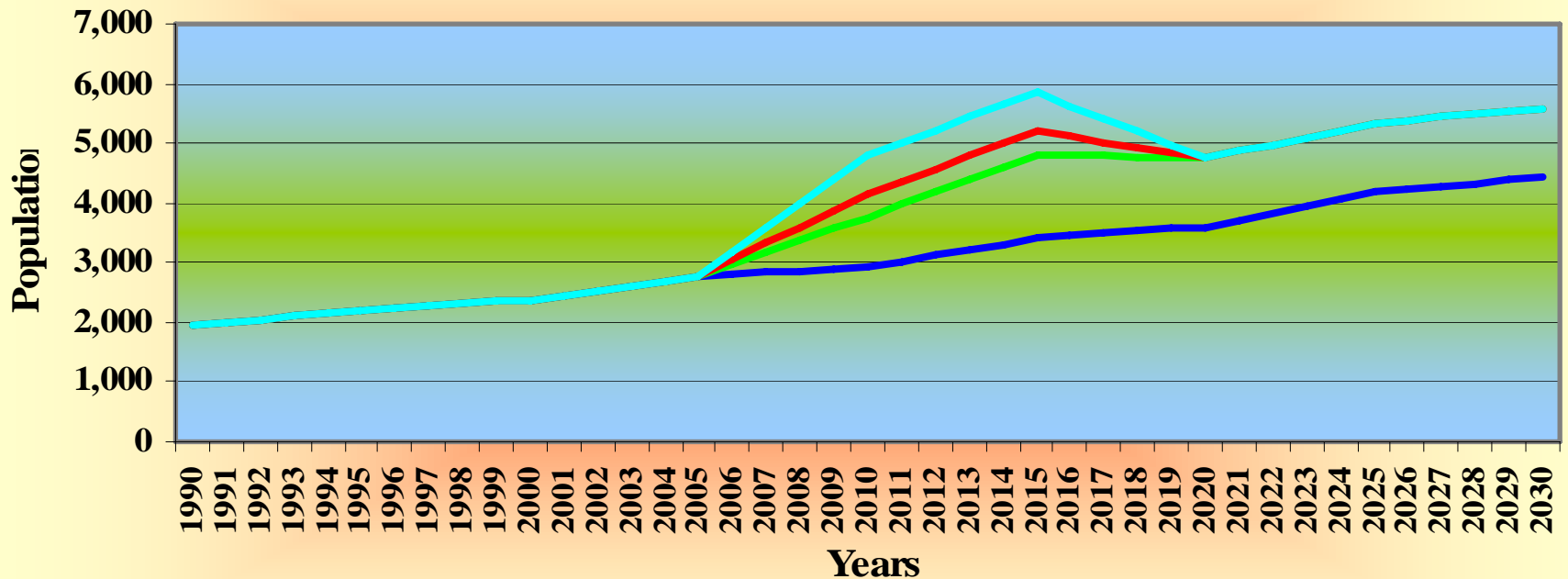
Medium # of Development Residents assumes 500 workers to Sublette County

high # of Development Residents assumes 1000 workers to Sublette County

of Production Residents assumes 875 production workers to Sublette County

Population (cont.)

North Sublette County Population



— No impact (natural increase) — Low Projected Impact — Medium Projected Impact — High Projected Impact

Natural Increase Assumes a 23% increase every 10 years.

Low # of Development Residents assumes 200 workers to Sublette County

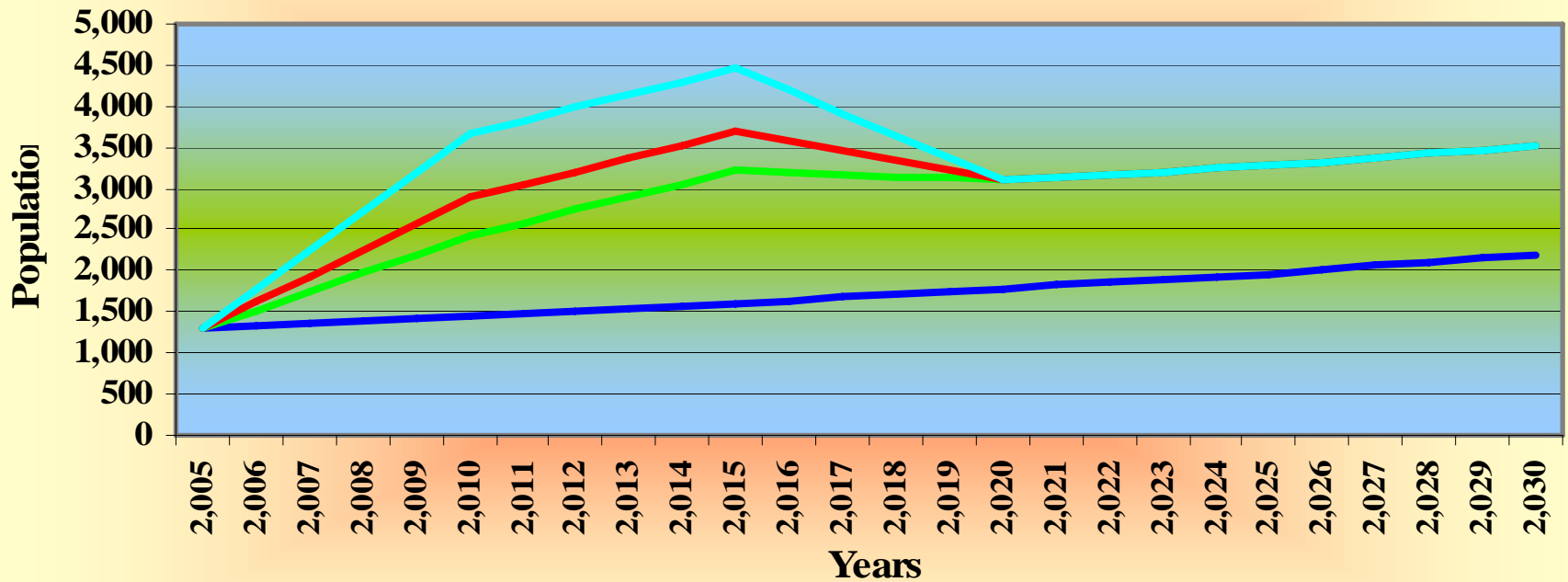
Medium # of Development Residents assumes 500 workers to Sublette County

high # of Development Residents assumes 1000 workers to Sublette County

of Production Residents assumes 875 production workers to Sublette County

Enrollment

Sublette County Enrollment



— No impact (natural increase) — Low Projected Impact — Medium Projected Impact — High Projected Impact

Natural Increase Assumes a 23% increase every 10 years.

Low # of Development Residents assumes 200 workers to Sublette County

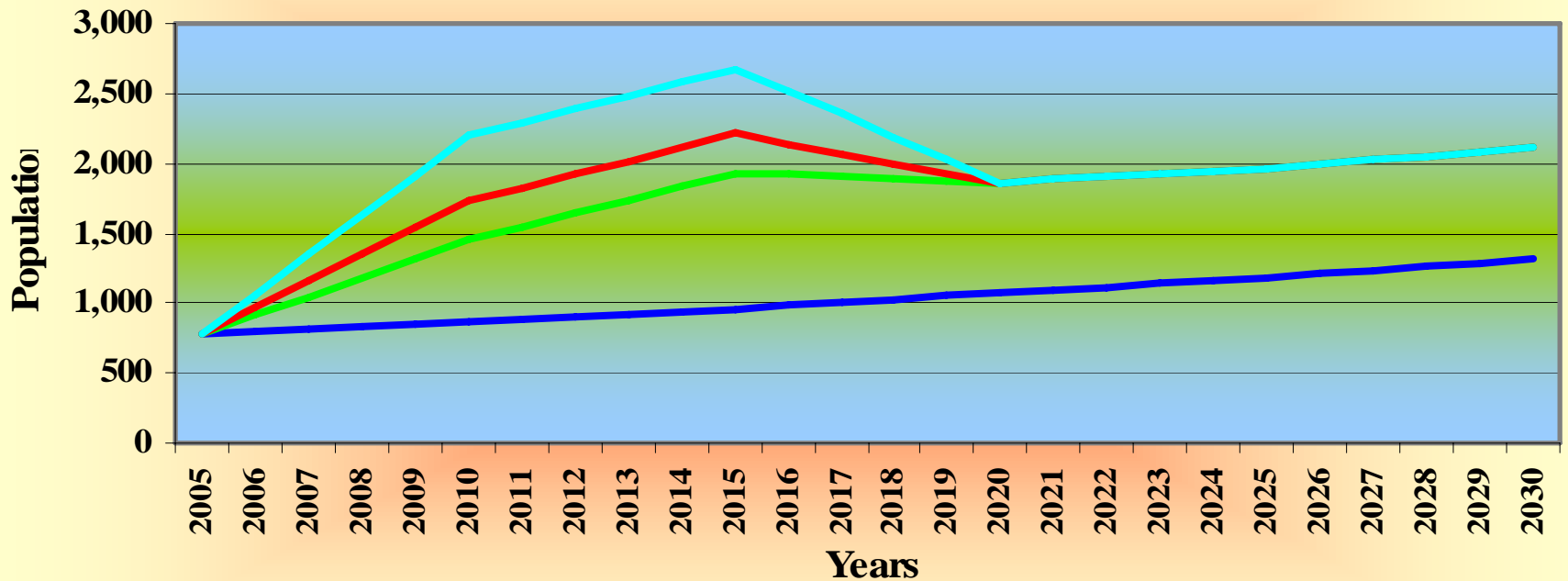
Medium # of Development Residents assumes 500 workers to Sublette County

high # of Development Residents assumes 1000 workers to Sublette County

of Production Residents assumes 875 production workers to Sublette County

Enrollment (cont.)

North Sublette County Enrollment



— No impact (natural increase) — Low Projected Impact — Medium Projected Impact — High Projected Impact

Natural Increase Assumes a 23% increase every 10 years.

Low # of Development Residents assumes 200 workers to Sublette County

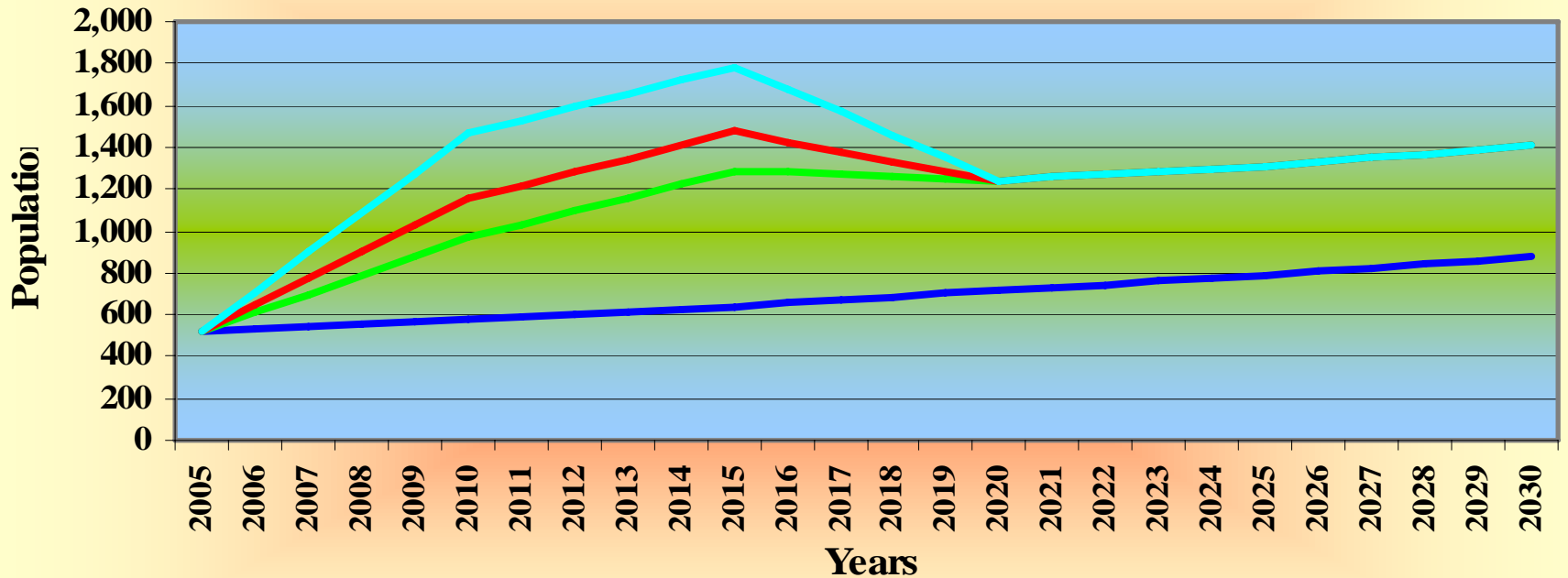
Medium # of Development Residents assumes 500 workers to Sublette County

high # of Development Residents assumes 1000 workers to Sublette County

of Production Residents assumes 875 production workers to Sublette County

Enrollment (cont.)

South Sublette County Enrollment



— No impact (natural increase) — Low Projected Impact — Medium Projected Impact — High Projected Impact

Natural Increase Assumes a 23% increase every 10 years.

Low # of Development Residents assumes 200 workers to Sublette County

Medium # of Development Residents assumes 500 workers to Sublette County

high # of Development Residents assumes 1000 workers to Sublette County

of Production Residents assumes 875 production workers to Sublette County