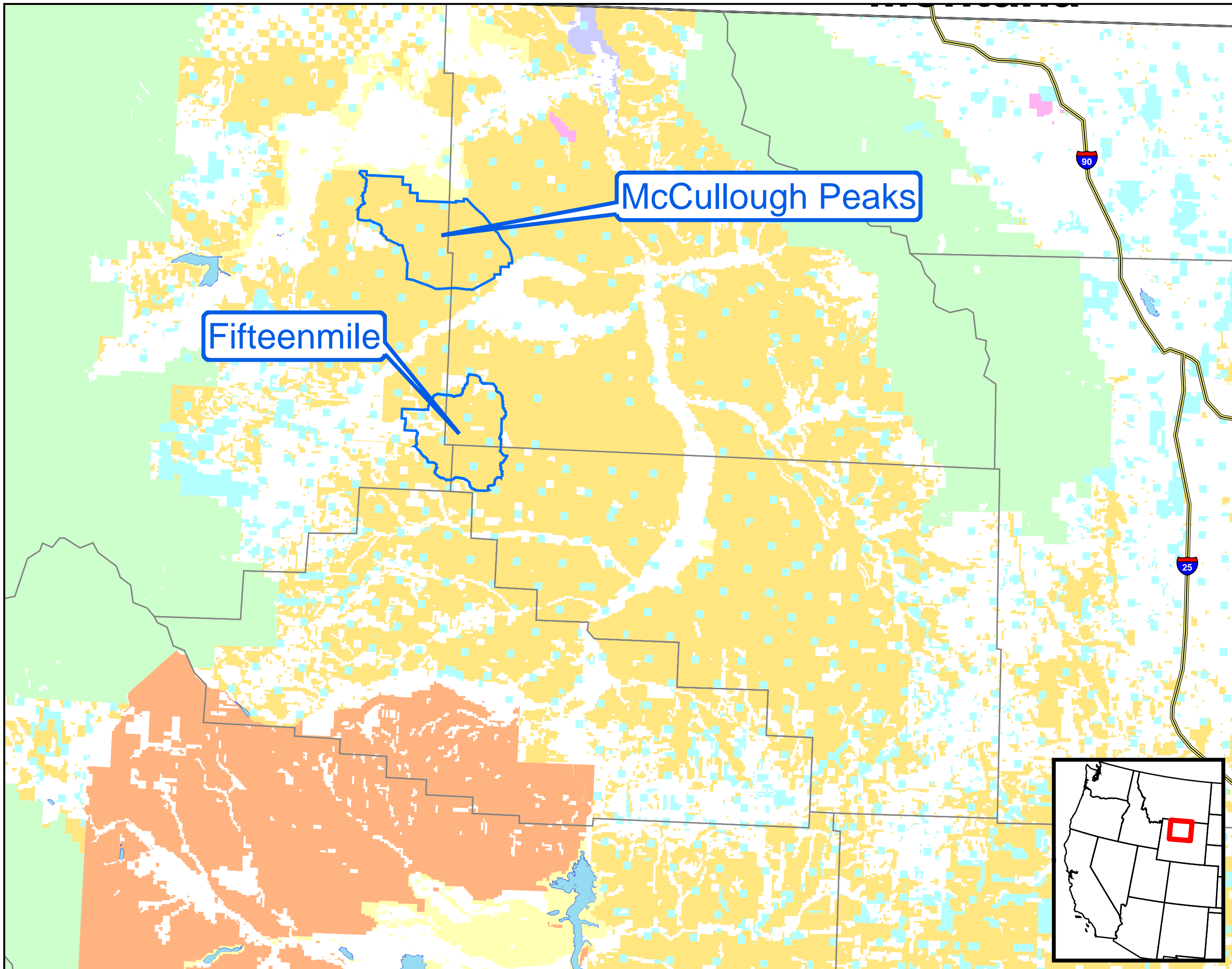


Herd Management Areas, Wyoming (north)

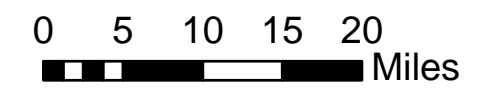
This map data set was last updated in October, 2005 and may occasionally be updated as needed. BLM Field Offices are responsible for the determination of herd area and herd management area boundaries. Users of this data may contact the appropriate administrative Field Office to determine if the map data is current.



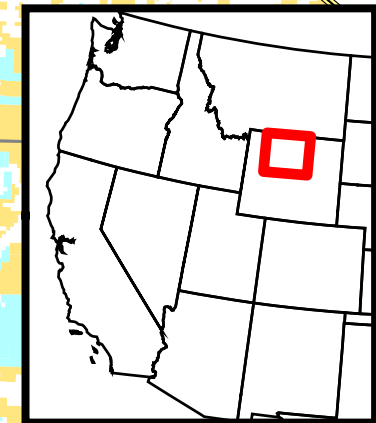
- | | |
|-----------------------|---------------------------|
| Interstate Highways | Bureau of Indian Affairs |
| Herd Management Areas | Bureau of Land Management |
| COUNTY Boundaries | Bureau of Reclamation |
| State Boundary | Corps of Engineers |
| | Department of Defense |
| | Fish & Wildlife |
| | Forest Service |
| | National Grasslands |
| | National Park Service |
| | Other Federal |
| | Private |
| | State |
| | Water |



Jan. 19, 2006



No Warranty is made by the Bureau of Land Management as to the accuracy, reliability, or completeness of these data for individual use or aggregate use with other data.



United States Department of the Interior
Bureau of Land Management