

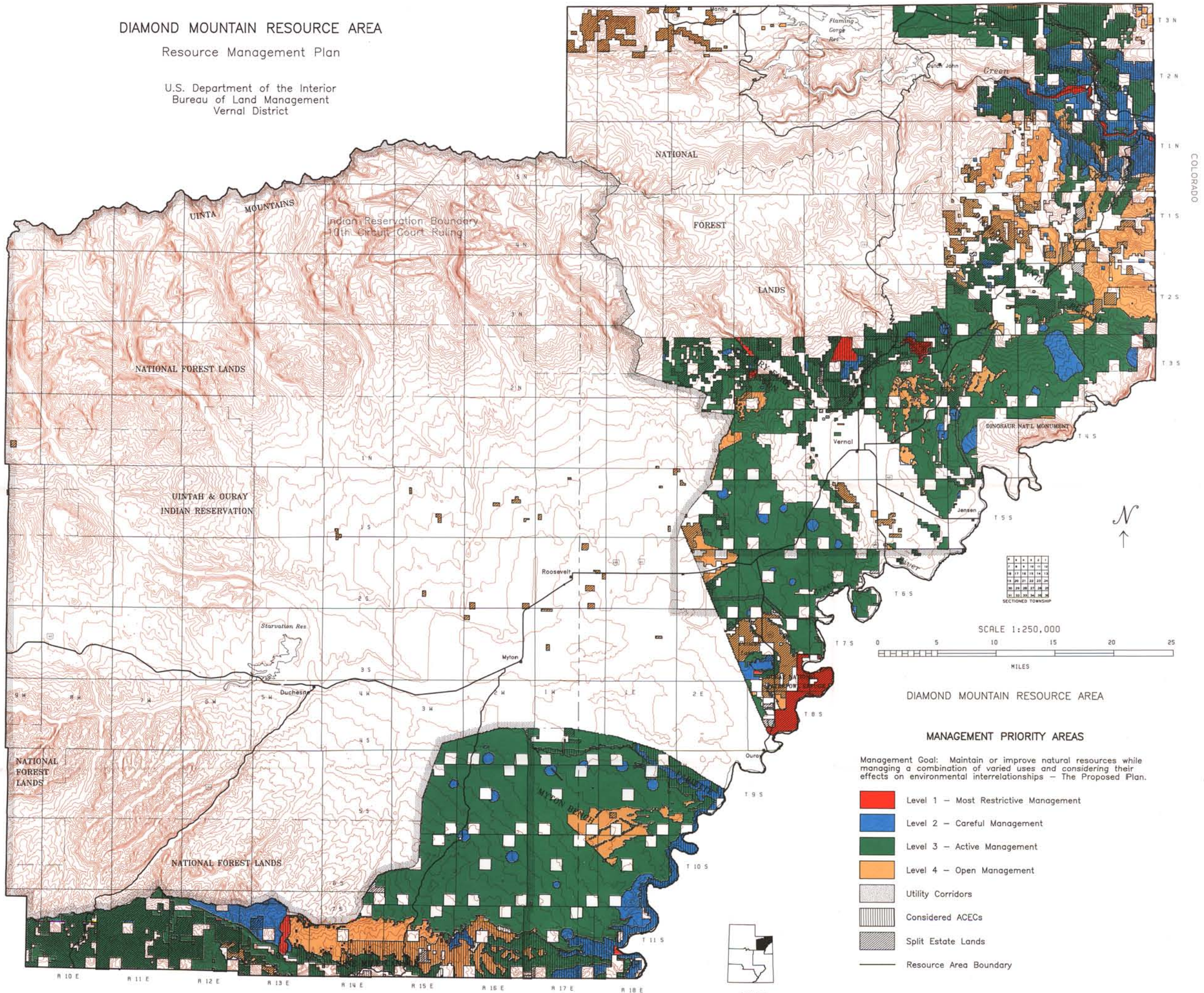
DIAMOND MOUNTAIN RESOURCE AREA

Resource Management Plan

U.S. Department of the Interior
Bureau of Land Management
Vernal District

WYOMING

R 17 E R 18 E R 19 E R 20 E R 21 E R 22 E R 23 E R 24 E R 25 E



COLORADO

SCALE 1:250,000



DIAMOND MOUNTAIN RESOURCE AREA

MANAGEMENT PRIORITY AREAS

Management Goal: Maintain or improve natural resources while managing a combination of varied uses and considering their effects on environmental interrelationships - The Proposed Plan.

- Level 1 - Most Restrictive Management
- Level 2 - Careful Management
- Level 3 - Active Management
- Level 4 - Open Management
- Utility Corridors
- Considered ACECs
- Split Estate Lands
- Resource Area Boundary



UTAH