

Slickrock Bike Trail

625,000

626,000

627,000

628,000

629,000

4,274,000

4,273,000

4,272,000

4,271,000

4,270,000

4,274,000

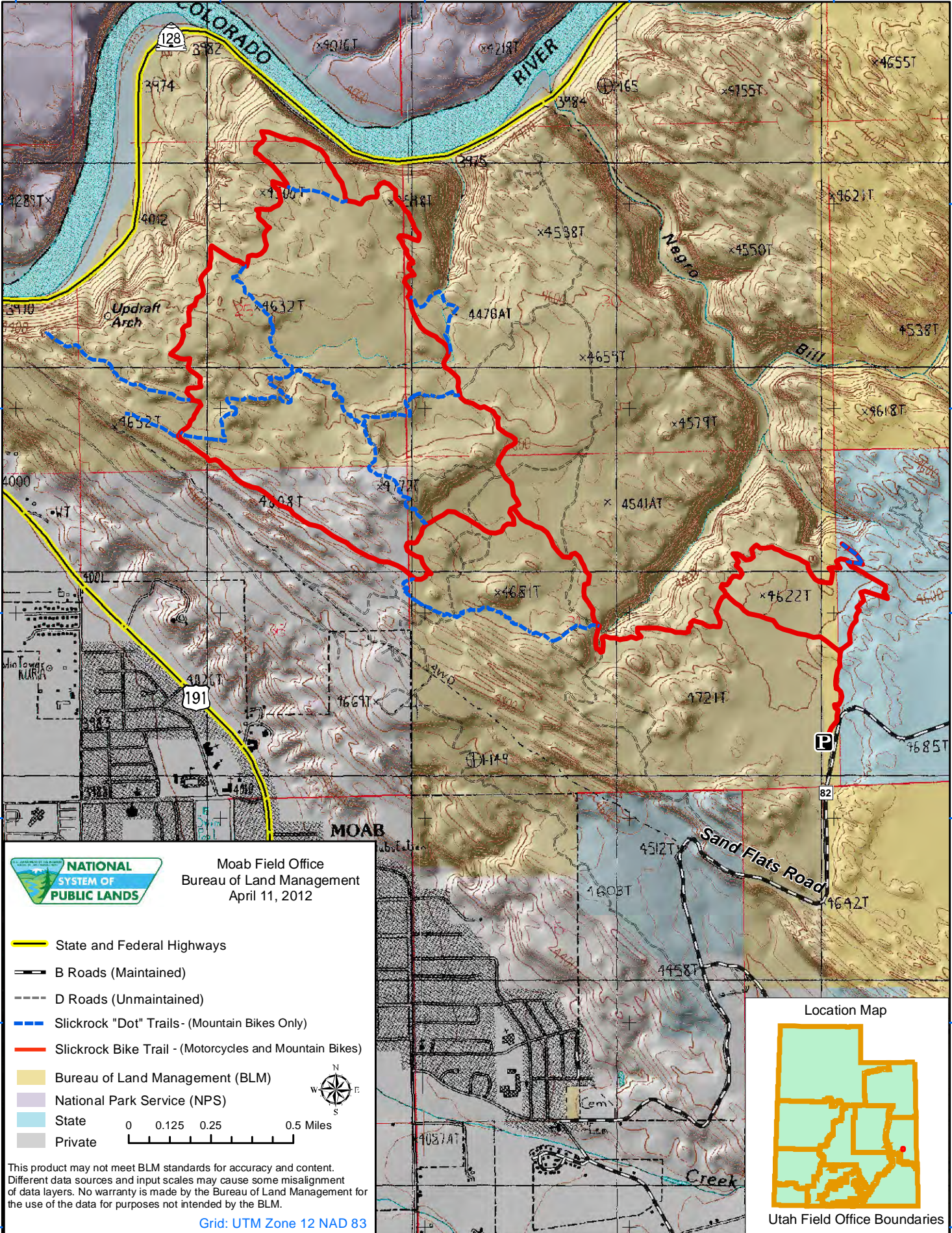
4,273,000

4,272,000

4,271,000

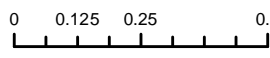
4,270,000

4,269,000



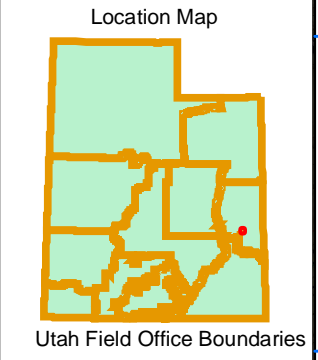
Moab Field Office
Bureau of Land Management
April 11, 2012

- State and Federal Highways
- B Roads (Maintained)
- D Roads (Unmaintained)
- Slickrock "Dot" Trails - (Mountain Bikes Only)
- Slickrock Bike Trail - (Motorcycles and Mountain Bikes)
- Bureau of Land Management (BLM)
- National Park Service (NPS)
- State
- Private



This product may not meet BLM standards for accuracy and content. Different data sources and input scales may cause some misalignment of data layers. No warranty is made by the Bureau of Land Management for the use of the data for purposes not intended by the BLM.

Grid: UTM Zone 12 NAD 83



Utah Field Office Boundaries