





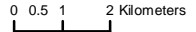
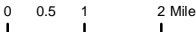


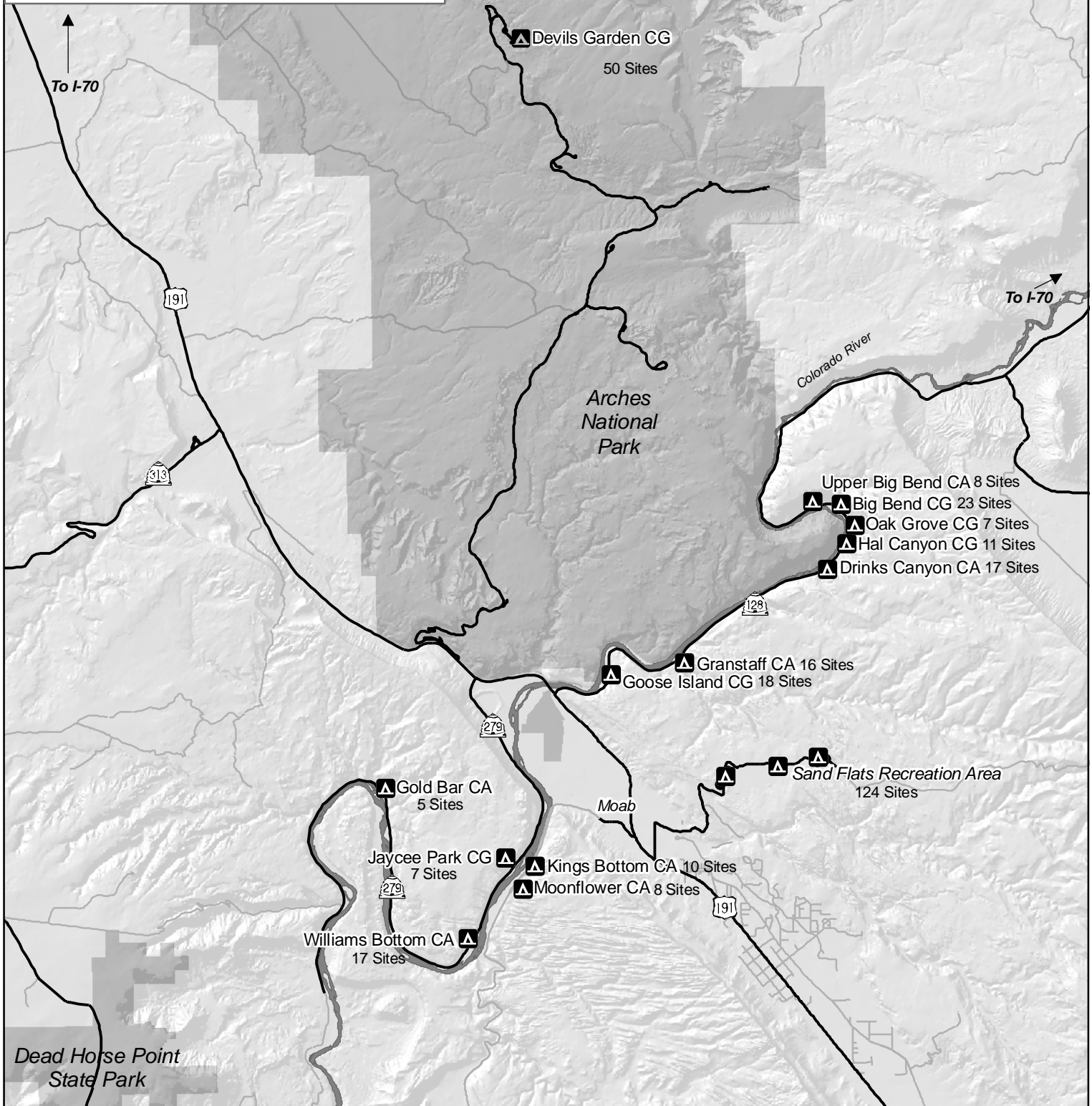
Federal Campgrounds Closest to Arches National Park

 Paved Roads
 Gravel Roads
 Colorado River
 **Campgrounds (CG)**
 Campgrounds have picnic tables, vault toilets, grills, graveled roads and trash receptacles. Some campgrounds may have additional facilities.
 **Camping Areas (CA)**
 Camping areas have simple vault toilets and metal fire rings. Dumpsters are available for camper use off-site.
 Woodcutting and gathering, including Christmas tree cutting, is prohibited.

Bureau of Land Management
 Moab Field Office

All travel is limited to designated roads. *Map created 12/29/2009*



BLM MOAB FIELD OFFICE CAMPING OPPORTUNITIES CLOSEST TO ARCHES NATIONAL PARK

(for additional information: <http://www.blm.gov/ut/st/en/fo/moab/recreation/campgrounds.html>)

Individual sites are not reservable. All sites have non-flush vault toilets. Drinking water is available at Lion's Park at the south side of the pedestrian bridge. All sites have a two vehicle limit, and are equipped with a picnic table and metal fire grill. Campgrounds have graveled roads and on-site trash service. Camping Areas have dirt roads; trash service is available for camper use at the nearest BLM campground.

Group Sites are available by advance reservation (group sizes of 15 or more only) at Big Bend, Goose Island, and Goldbar, Campgrounds. Please call (435) 259-2100 for reservations; additional information about each of the group sites is available on the website listed above.

Site Name	Location	Nightly Fee	Number of Individual Campsites	Area Activities
ALONG UTAH HIGHWAY 128 (COLORADO RIVER ROAD)				
GOOSE ISLAND Campground	1.4 miles from Hwy 191 on U-128	\$12.00 per site	18	RV and tent sites; 2 reservable group sites; early summer shade
GRANSTAFF Campground	3 miles from Hwy 191 on U-128	\$12.00 per site	16	Hiking and biking trails nearby. No trailers or large vehicles. All sites by river.
DRINKS CANYON Camping Area	6.2 miles from Hwy 191 on U-128	\$8.00 per vehicle	17	Hiking and biking trails nearby. Four walk-in sites. Rough entrance road
HAL CANYON Campground	6.6 miles from Hwy 191 on U-128	\$12.00 per site	11	2 walk-in sites; early summer shade; excellent river views
OAK GROVE Campground	6.9 miles from Hwy 191 on U-128	\$12.00 per site	7	4 walk-in sites/3 vehicle sites. Early summer shade. No trailers or large vehicles
BIG BEND Campground	7.4 miles from Hwy 191 on U-128	\$12.00 per site	23	Some large RV sites; 3 reservable group sites; facilities to assist the disabled; beach on river
UPPER BIG BEND Camping Area	8.1 miles from Hwy 191 on U-128	\$8.00 per vehicle	8	Near Big Bend bouldering rocks. Rough entrance road
ALONG UTAH HIGHWAY 279 (POTASH ROAD)				
JAYCEE PARK Campground	4.2 miles from Hwy 191 on U-279	\$12.00 per site	7	All walk-in sites; hiking trail; near rock climbing area. No trailers, RVs, or large vehicles
WILLIAMS BOTTOM Campground	6 miles from Hwy 191 on U-279	\$8.00 per vehicle	17	Near rock climbing and hiking opportunities. Many trees.
GOLDBAR Campground	10.2 miles from Hwy 191 on U-279	\$8.00	5	4 reservable group sites; Corona arch hiking trail nearby
ALONG KANE CREEK ROAD				
KING'S BOTTOM Campground	2.8 miles from Hwy 191 on Kane Creek Road	\$12.00 per site	10	Hiking and biking trails nearby. Most sites on river.
MOONFLOWER Camping Area	3.0 miles from hwy 191 on Kane Creek Road	\$8.00 per vehicle	8	8 walk-in campsites; shaded canyon
ALONG SAND FLATS ROAD (EAST OF MOAB)				
SAND FLATS RECREATION AREA Camp Sites (In cooperation with Grand County)	2 miles east of Moab on Sand Flats Road	\$10.00 per vehicle (up to 5 people)	120	Near Slickrock Bike Trail; 4WD trails