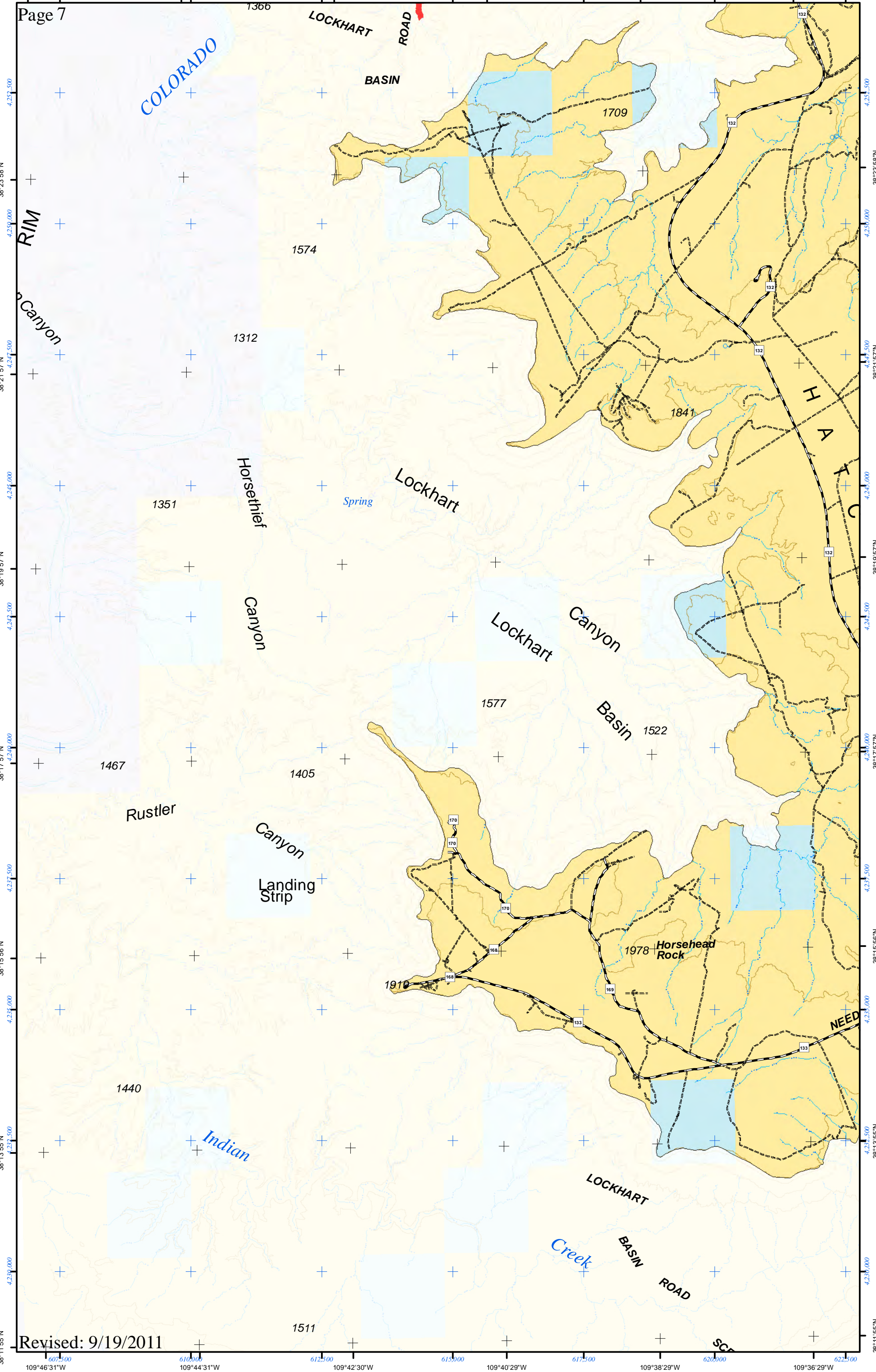


109°46'31"W 607,500 109°44'31"W 610,000 109°42'30"W 612,500 109°40'29"W 615,000 109°38'29"W 617,500 109°36'29"W 620,000 622,500

Page 7



Revised: 9/19/2011

38°11'55"N 607,500 610,000 612,500 615,000 617,500 620,000 622,500 109°46'31"W 109°44'31"W 109°42'30"W 109°40'29"W 109°38'29"W 109°36'29"W