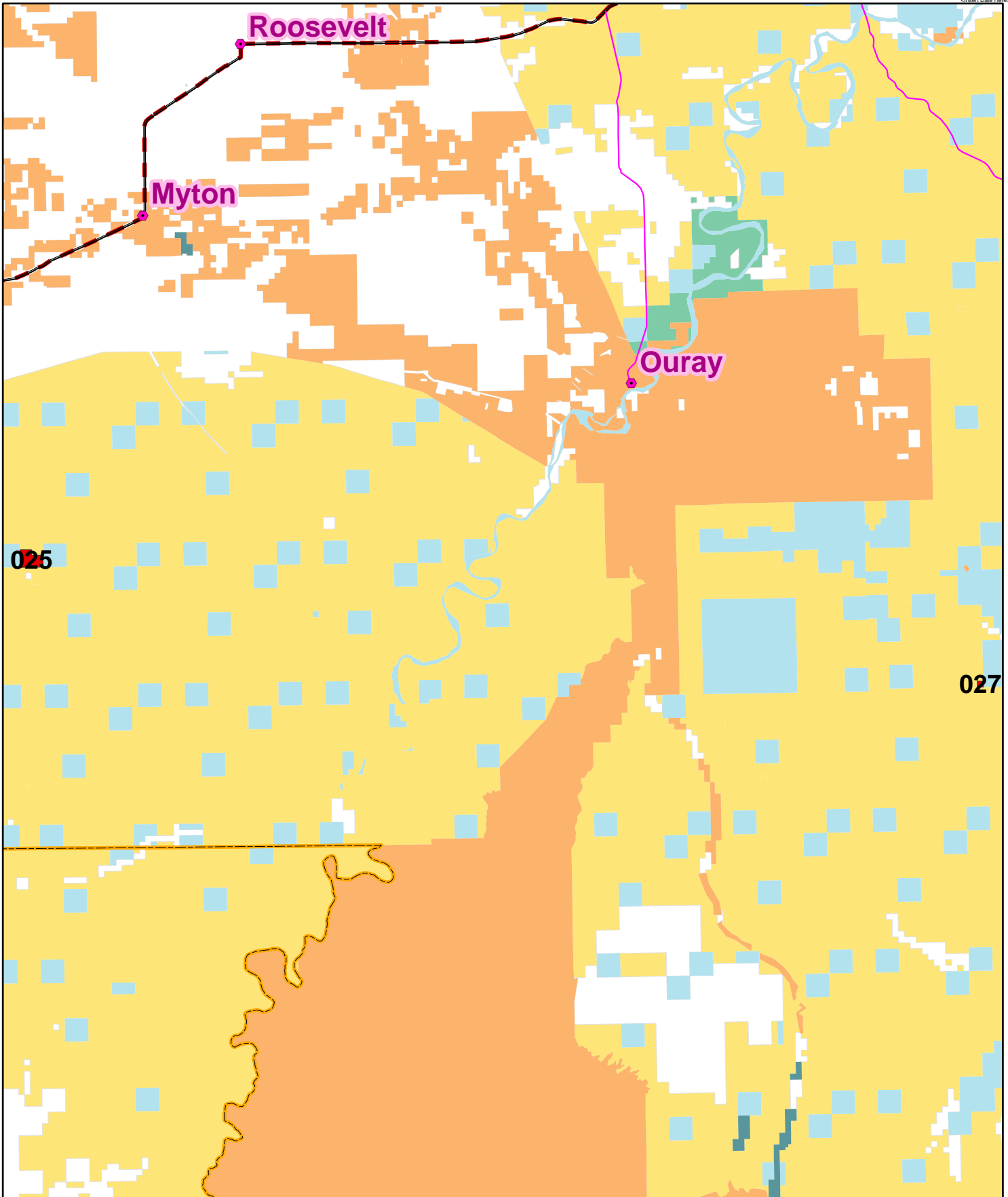


November 2009 Oil and Gas Lease Sale Vernal Field Office

October 2, 2009

BLM

[closed Date Here](#)



025

027

125 Sale Parcels

No warranty is made by the BLM for use of the data for purposes not intended by the BLM.
This product may not meet BLM standards for accuracy and content. Different data sources and input scales may cause some misalignment of data layers.

- Public Land
- National Forest
- Native American Land
- National Park
- State
- Private

