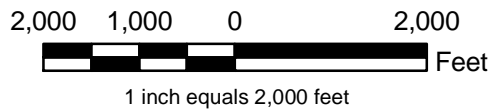
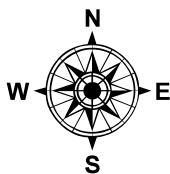


**Legend**

-  Existing Ground Water Well
-  Proposed Ground Water Well
-  Proposed Access Roads
-  Offices and Facilities
-  Salvaged Vegetation Nursery
-  Project Area



**Proposed Sloan Hills  
Competitive Mineral Material Sales**

**Proposed Action**



Base Map: 2006 NAIP 1m True Color Aerial Photography, Clark County, Nevada