



United States Department of the Interior

BUREAU OF LAND MANAGEMENT

Ely District Office
HC33 Box 33500 (702 N. Industrial Way)
Ely, Nevada 89301-9408
http://www.blm.gov/nv/st/en/fo/ely_field_office.html



In Reply Refer to:
NOPA-NV-040-09-10

NOTICE OF PROPOSED ACTION **LANDS IN WILDERNESS**

STATE: Nevada

COUNTY: White Pine, Lincoln, Nye

DISTRICT OFFICE: Ely District Office
HC 33 Box 33500
702 North Industrial Way
Ely, Nevada 89301

WILDERNESS AREAS: Highland Ridge, Mt. Grafton, South Egan Range
and Far South Egans

PROPOSED ACTION: Wilderness Management Plan

Description of the Proposed Action

The Ely District Office is currently preparing a Wilderness Management Plan for the Highland Ridge, Mt. Grafton, South Egan Range and Far South Egans Wilderness areas. The Wilderness Management Plan will provide the preliminary management guidance to the Bureau of Land Management in decisions affecting these four wilderness areas. These areas are being addressed in a single management plan due to their proximity and similar issues.

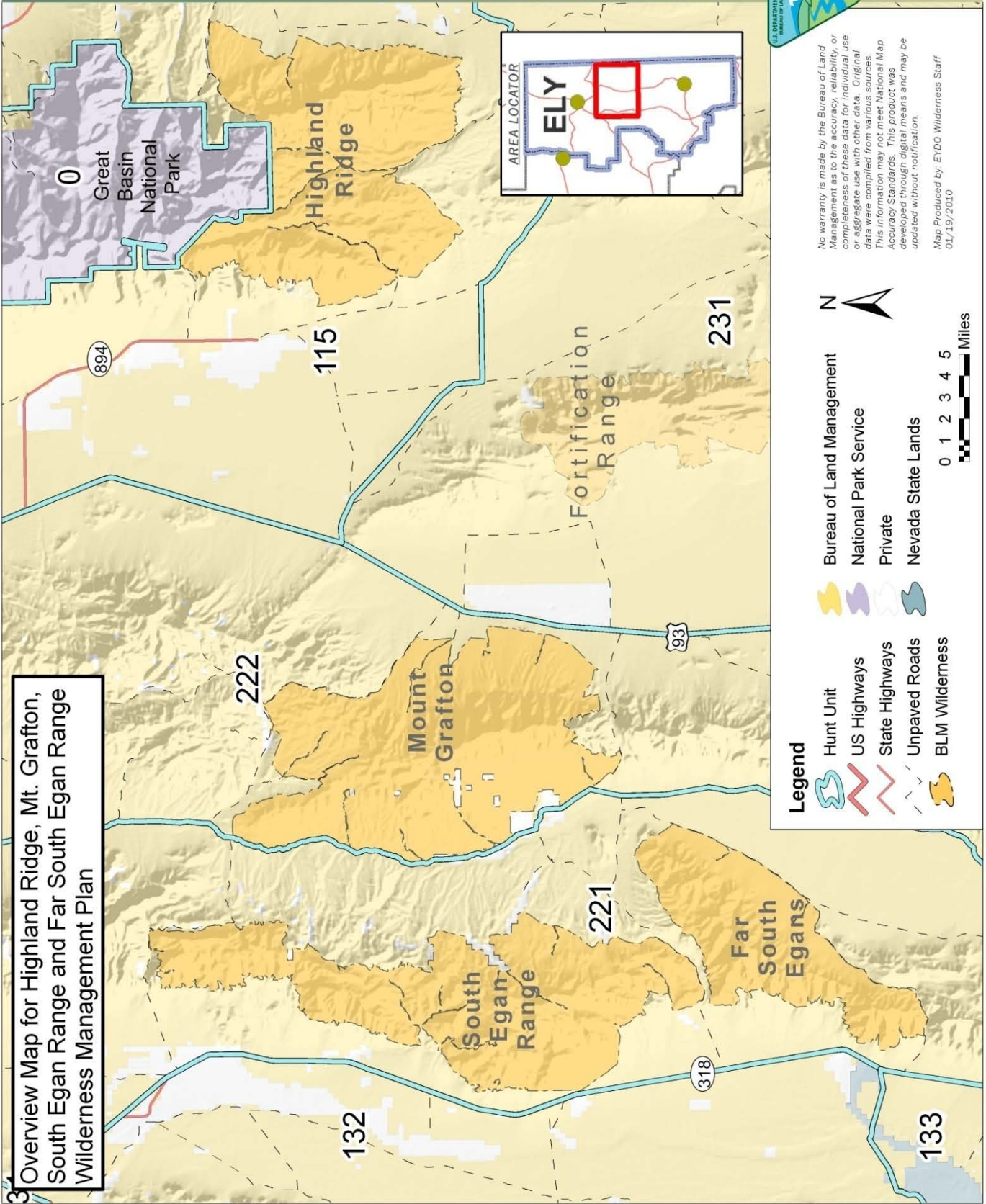
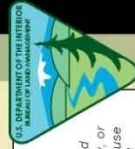
Public Involvement Opportunity

Please send comments to Dave Jacobson, Wilderness Planner, at dave_jacobson@nv.blm.gov or to the address above before **February 26, 2010**.

The Ely District Office is also building a mailing list for the Wilderness Management Plan. For more information, or to receive a copy of the draft Wilderness Management Plan when it is completed, please contact Dave Jacobson, Wilderness Planner, at (775) 289-1873 or dave_jacobson@nv.blm.gov.

Rosemary Thomas
Rosemary Thomas
District Manager
Ely District Office

10/2/09
Date



Overview Map for Highland Ridge, Mt. Grafton, South Egan Range and Far South Egan Range Wilderness Management Plan

Legend

- Hunt Unit
- US Highways
- State Highways
- Unpaved Roads
- BLM Wilderness
- Bureau of Land Management
- National Park Service
- Private
- Nevada State Lands



No warranty is made by the Bureau of Land Management as to the accuracy, reliability, or completeness of these data for individual use or aggregate use with other data. Original data were compiled from various sources. This information may not meet National Map Accuracy Standards. This product was developed through digital means and may be updated without notification.

Map Produced by: EYDO Wilderness Staff
01/19/2010