



# Highland Ridge Wilderness

## Bureau of Land Management

**Ely Office**  
(775) 289-1800  
HC Box 33500  
Ely, NV 89301

[www.blm.gov/nv/st/en/fo/ely\\_field\\_office.html](http://www.blm.gov/nv/st/en/fo/ely_field_office.html)

**Caliente Office**  
(775) 726-8100  
P.O. Box 237  
Caliente, NV 89008

**Size:** 68,622 acres

**Elevation:** 6,070- 10,825 feet

**Designation:** White Pine County Conservation, Recreation and Development Act (2006)

### Directions

The Highland Ridge Wilderness Area is located in southeastern White Pine County approximately 20 miles south of Baker, Nevada; immediately south of Great Basin National Park. Access to the eastern side of Highland Ridge Wilderness Area from Baker, Nevada is along State Highway 487 to the southeast for 12 miles. Following signs to Lexington Arch will lead you along the far northeastern boundary of the wilderness area.



### Area Description

The Highland Ridge Wilderness Area lies at the southern end of the Snake Range, adjacent to Great Basin National Park. The area encompasses varying terrain, from sagebrush covered foothills to steep ridges with sheer outcrops of rock. The steep, upland mountains are dotted with pinyon pine and juniper trees. Several riparian corridors stretch through the wilderness area, lined with aspen, chokecherry, and currant. Remember that cutting or removing vegetation is not permitted. Gathering wood for campfires, when permitted, is limited to dead and down material. Wildflowers bloom throughout the spring with paintbrush and blue flax being the most numerous. Mule deer and elk are common throughout the area. Herds of pronghorn antelope graze the lower slopes. Cougar find great habitat on the rocky ledges and steep, forested mountains.

### Recreational Opportunities

The long, deep and winding valleys and canyons provide excellent opportunities for solitude. Stands of aspen combined with long sweeps of pinyon pine and juniper provide excellent coverage, and the sheer size of the Highland Ridge Wilderness allow for solitude. Recreational opportunities include camping, hiking, backpacking, horseback riding, and hunting. If carrying feed for horseback riding, it needs to be certified weed free. Hunting and non-commercial trapping are allowed under state and local laws within the wilderness area. Remember when camping that it is limited to 14 days and campsites are primitive. Please help preserve Nevada's fragile environments, park your vehicle and set up camp in previously used sites. Impact to the area can be minimized by practicing Leave No Trace ethics.

*Mechanized and motorized vehicles are NOT PERMITTED in a wilderness area.*

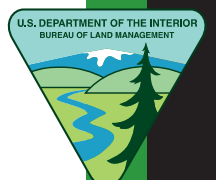
### Additional Information

- Signs indicating "Wilderness" and "Closed Road" or "Closed Route" are placed at various intervals. Obey all posted signs.
- Vehicles can be parked outside the wilderness boundary.
- Pets are allowed, but please keep your pets under control at all times.
- Removal, disturbance, or attempting to remove archaeological materials is a felony.
- Contact the Ely Office for current road conditions and hazards.

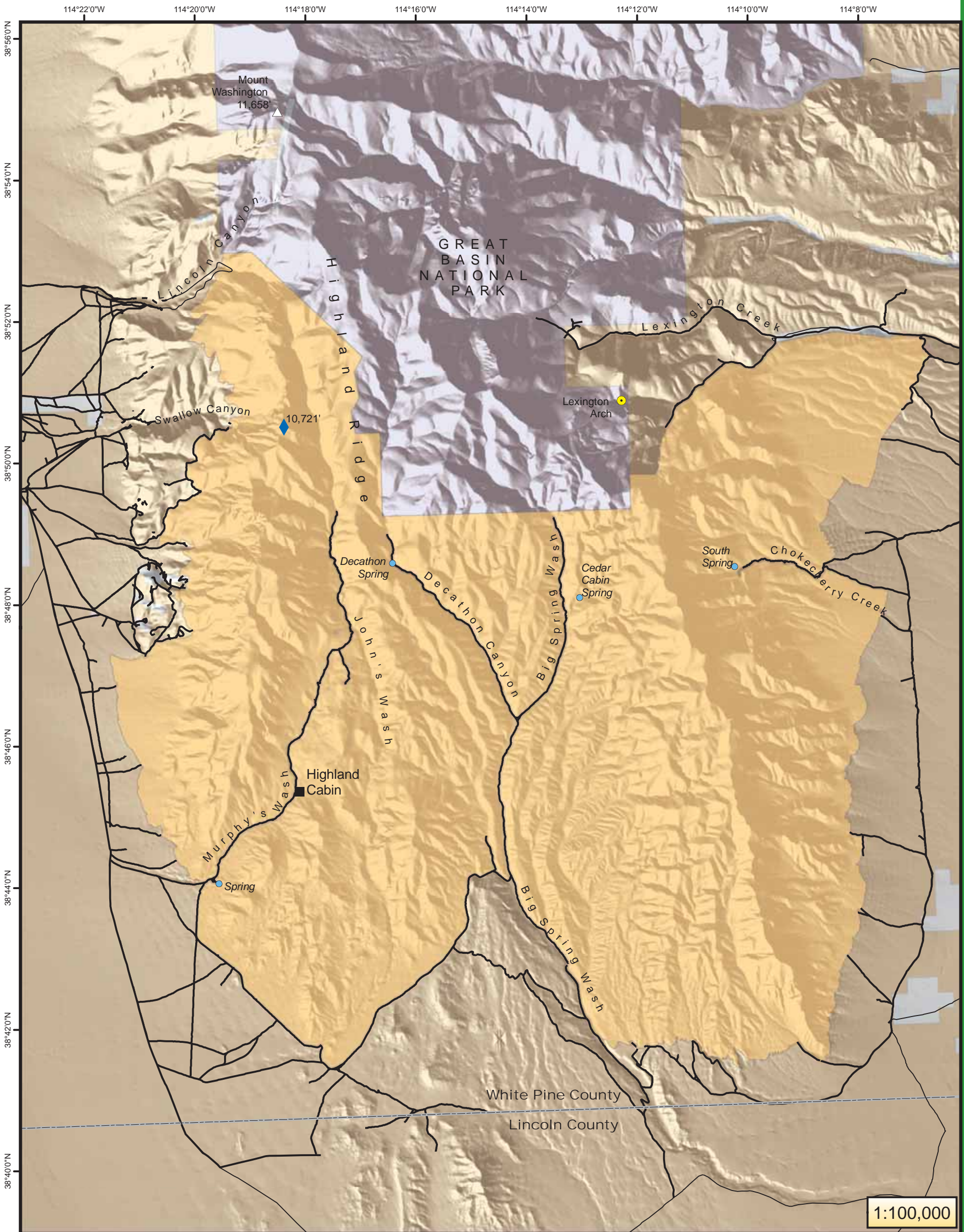


### Maps

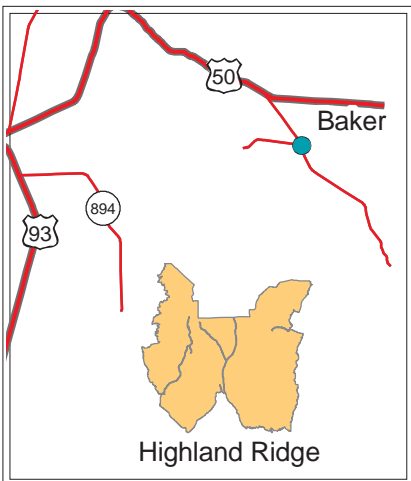
USGS 7.5 Quadrangle Maps:  
Wheeler Peak, Minerva Canyon, Arch Canyon, Red Ledges, Big Springs, and Needle Point Spring  
BLM 1:100,000 Map: Garrison



# Highland Ridge Wilderness Area



1:100,000



## Legend

- City
- ◆ Highest Point in Wilderness
- Route: 4WD or better
- Route: ATV
- County
- Wilderness Area
- Land Managed by BLM
- National Park Service
- Private Land



No warranty is made by the Bureau of Land Management as to the accuracy, reliability, or completeness of these data for individual use or aggregate use with other data.

