



Bristlecone Wilderness

Bureau of Land Management

Ely Office
(775) 289-1800
HC Box 33500
Ely, NV 89301

www.blm.gov/nv/st/en/fo/ely_field_office.html

Caliente Office
(775) 726-8100
P.O. Box 237
Caliente, NV 89008

Size: 14,095 acres

Elevation: 7,380 - 9,859 feet

Designation: White Pine County Conservation, Recreation and Development Act (2006)

Directions

The Bristlecone Wilderness Area is located in central White Pine County, approximately five miles due west of McGill, Nevada, or about 10 miles north of Ely, Nevada. Access to this wilderness area is from Ely, north on Federal Highway 93 for 5 miles. Turn left on State Highway 490; at the stop sign turn right onto Lackawana Road. After leaving the small community of Cross Timbers, drive about a mile to a dirt road on your right that will take you along the eastern side of the range, or proceed through Hercules Gap to access the west side of the Bristlecone Wilderness Area.



Area Description

The Bristlecone Wilderness Area lies in the Egan Range in eastern Nevada. Vegetation consists primarily of desert brush and grass at the lower elevations and a scattering of pinyon pine and juniper stands on the upland slopes. Groves of aspen exist in several drainages, including Rattlesnake Canyon. This area's namesake, the bristlecone pine, is found in this wilderness area as well, particularly along the northern ridgeline. Spring can be magnificent in this wilderness area with blooms of globemallow, paintbrush, blue flax, and expanses of arrow-leaf balsam root. Remember that cutting or removing vegetation is not permitted. Gathering wood for campfires, when permitted, is limited to dead and down material. There is high potential for spotting pronghorn antelope on the lower slopes and mule deer higher up. Rumors of big horn sheep in these hills abound. An occasional badger may cross your path as well.

Recreational Opportunities

Recreational opportunities include camping, hiking, backpacking, horseback riding, and hunting. If carrying feed for horseback riding, it needs to be certified weed free. Hunting and non-commercial trapping are allowed under state and local laws within the wilderness area. Remember when camping that it is limited to 14 days and campsites are primitive. Please help preserve Nevada's fragile environments, park your vehicle and set up camp in previously used sites. Impact to the area can be minimized by practicing Leave No Trace ethics.

Bristlecone Wilderness Area provides opportunities for solitude in the canyons extending from Heusser Mountain (9,409 feet) or tucked back in The Cove. Spectacular views of Steptoe Valley and the Schell Creek Range are afforded those who hike to the top of Heusser Mountain.

Mechanized and motorized vehicles are NOT PERMITTED in a wilderness area.

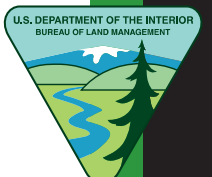
Additional Information

- Signs indicating "Wilderness" and "Closed Road" or "Closed Route" are placed at various intervals. Obey all posted signs.
- Vehicles can be parked outside the wilderness boundary.
- Pets are allowed, but please keep your pets under control at all times.
- Removal, disturbance, or attempting to remove archaeological materials is a felony.
- Contact the Ely Office for current road conditions and hazards.

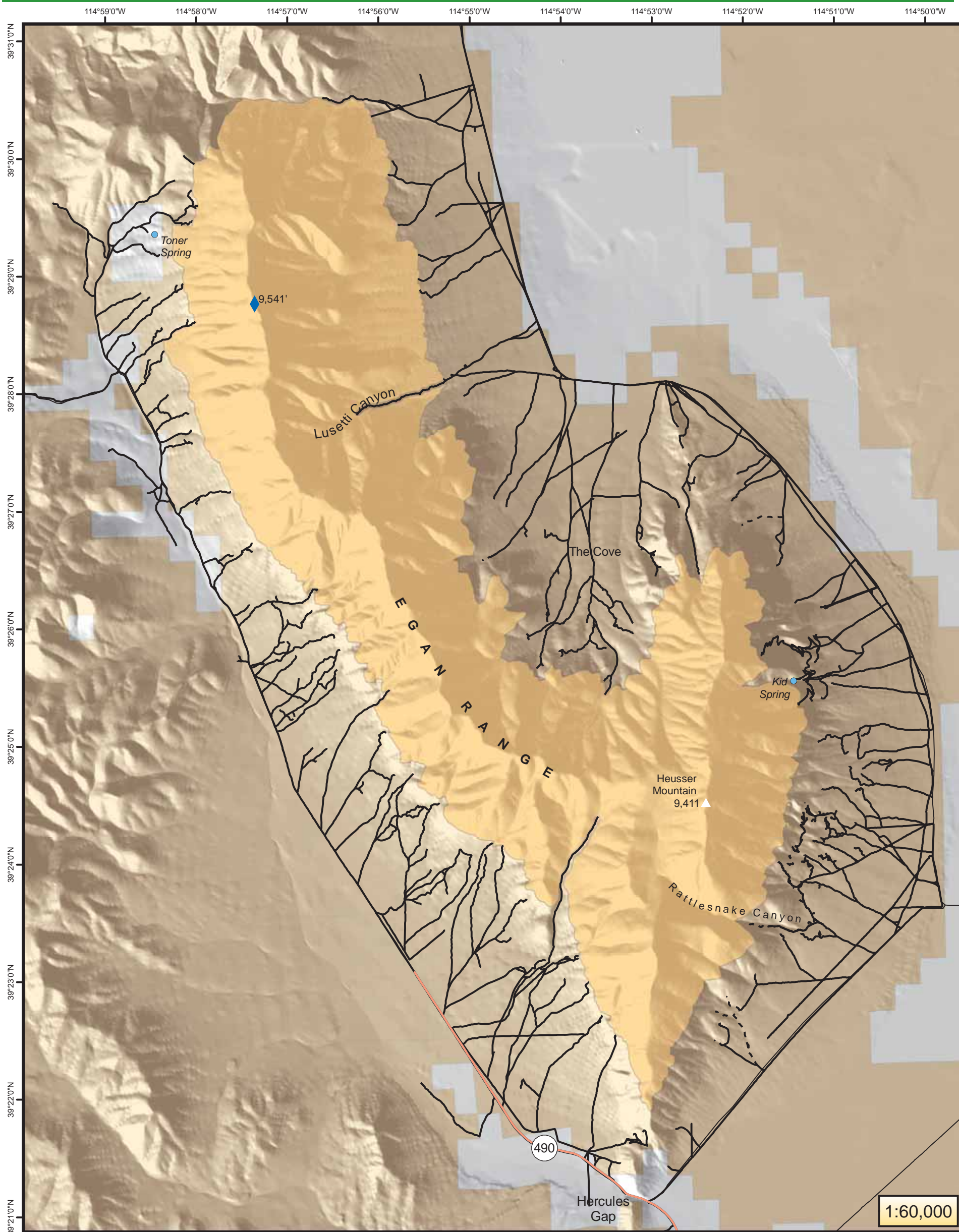


Maps

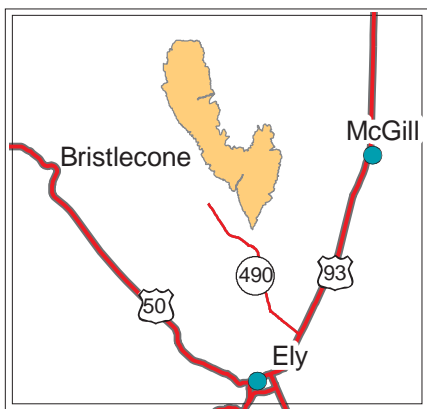
USGS 7.5 Quadrangle Maps: Steptoe Ranch, Lusetti Canyon, McGill, and Ruth
BLM 1:100,000 Maps: Ely & Kern Mountains



Bristlecone Wilderness Area



1:60,000



Legend

- City
- ◆ Highest Point in Wilderness
- Route: 4WD or better
- Route: ATV
- Wilderness Area
- Land Managed by BLM
- Private Land



No warranty is made by the Bureau of Land Management as to the accuracy, reliability, or completeness of these data for individual use or aggregate use with other data.

