



Far South Egans Wilderness

Bureau of Land Management

Ely Office
(775) 289-1800
HC Box 33500
Ely, NV 89301

www.blm.gov/nv/st/en/fo/ely_field_office.html

Caliente Office
(775) 726-8100
P.O. Box 237
Caliente, NV 89008

Size: 36,384 acres

Elevation: 5,800 - 9,823 feet

Designation: Lincoln County Conservation, Recreation & Development Act (2004)

Directions

The Far South Egans Wilderness is located in east-central Nevada within Lincoln and Nye Counties. It lies 50 miles south of Ely along Federal Highway 318. Access to this wilderness area from Ely, Nevada is on Federal Highway 6 westbound for approximately 23 miles. Then head south on State Highway 318 through the town of Lund for 38 miles to Shingle Pass. Shingle Pass road allows access to the northern border of the wilderness area.



Area Description

The Far South Egans Wilderness consists primarily of an extremely rugged portion of the Egan Range. The west side of the range is characterized by spectacularly rugged limestone cliffs with multicolored strata. The Egan Range dramatically ascends 4,500 feet from the valley floor to form the spectacular limestone cliffs of the Far South Egan Range Wilderness Area.

The area includes an unusual and scenic mix of ponderosa and bristlecone pine forest. Large stands of ponderosa exist at higher elevations (7,000 feet and above). The east side of the Egan Range is less rugged and supports a dense cover of woodlands, principally pinyon pine and juniper. Mule deer, elk, bighorn sheep, mountain lions, golden eagles, and ferruginous hawks are among the numerous wildlife species found in the mountains of the Far South Egans Wilderness.

Other features of the Far South Egans Wilderness Area include an abandoned historic sawmill and a shingle mill. The shingle mill was in production around the early 1900's. Shingles were likely produced for the newly settled town of Lund, NV. Logging of ponderosa pine trees occurred around the turn of the 20th century.

Whipple Cave lies in the northwestern portion of the wilderness area. Following a 70 foot descent, you are provided with 1,000 feet of known passages. Cave decorations (shown at left) include rimstone dams, draperies, and a huge column over thirty feet tall. The cave has sustained regular use, but because of the difficulty of entrance, use has been relatively light and the cave remains in a very natural state.

Recreational Opportunities

This wild setting provides many excellent opportunities for recreation. Hiking, camping and backpacking are demanding because of the terrain, but very rewarding because of the area's special features. You get the impression that the many hidden places of the area have never been visited before. Numerous rock outcrops and cliffs provide opportunities for a wide range of rock climbing. Technical rock climbers may find challenge all along the western side of the wilderness area. All of these recreational opportunities are available in an area where solitude is a guaranteed characteristic.

If horseback riding in the area you may need to carry feed. Hay should be certified weed free. Hunting and non-commercial trapping are allowed under state and local laws within the wilderness area. Remember when camping that it is limited to 14 days and campsites are primitive. Please help preserve Nevada's fragile environments, park your vehicle or set up camp in previously used sites. Impact to the area can be minimized by practicing Leave No Trace ethics.

Mechanized and motorized vehicles are NOT PERMITTED in a wilderness area.

Additional Information

- Signs indicating "Wilderness" and "Closed Road" or "Closed Route" are placed at various intervals.
- Vehicles can be parked outside the wilderness boundary.
- Pets are allowed, but please keep your pets under control at all times.
- Removal, disturbance, or attempting to remove archaeological materials is a felony.
- Contact Ely or Caliente Offices for current road conditions and hazards.

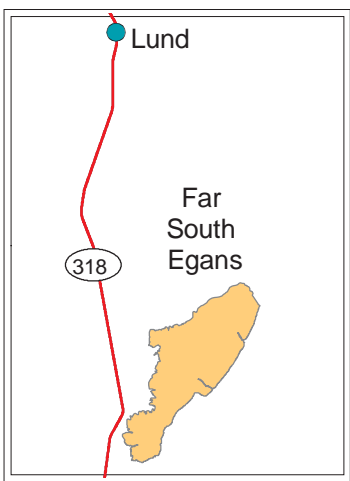
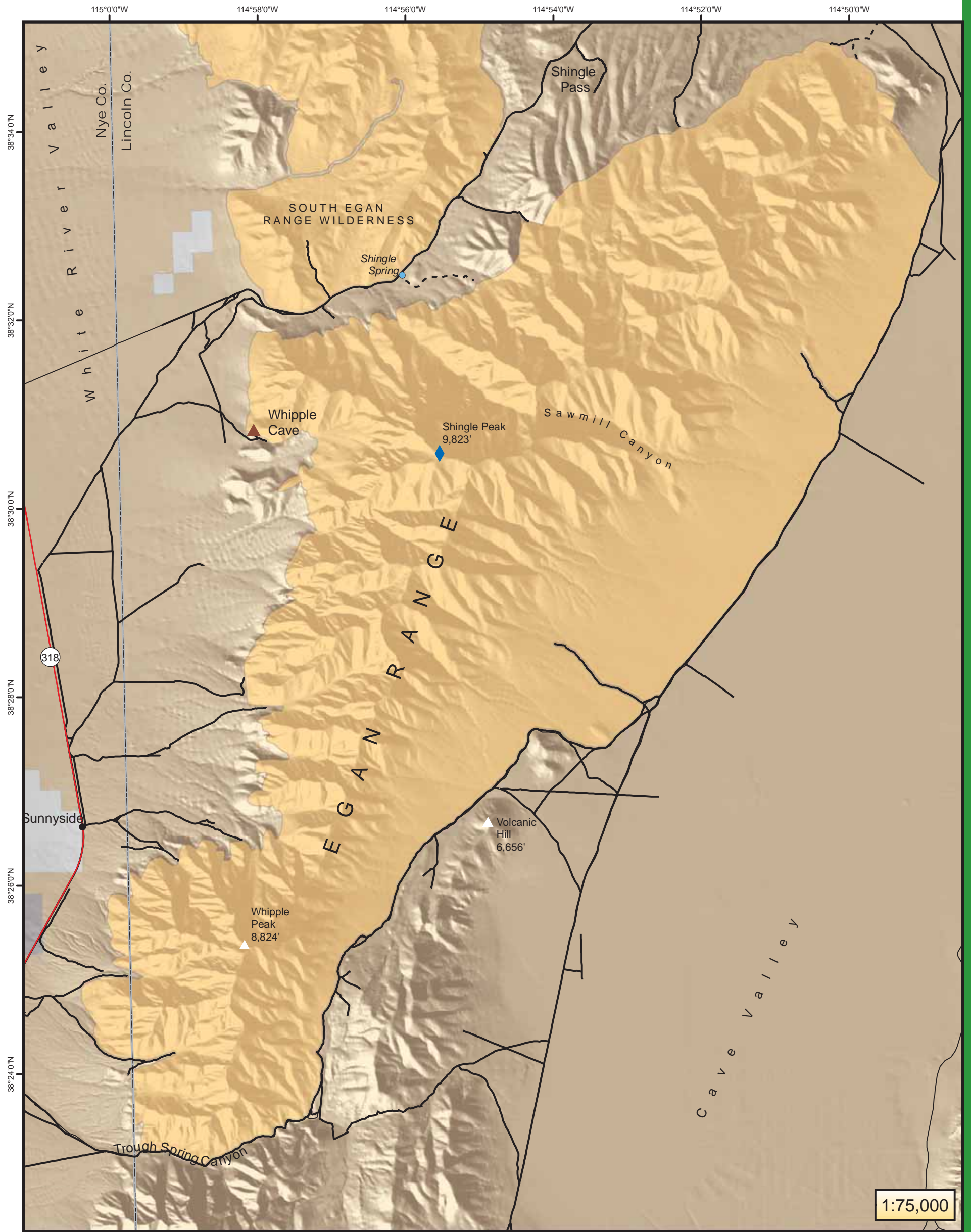


Maps

USGS 7.5 Quadrangle Maps: Shingle Pass, Shingle Pass SE, Sunnyside, Cave Valley Well, Sidehill Spring
BLM 1:100,000 Maps: Garrison, Willson Creek Range, and Quinn Canyon Range



Far South Egans Wilderness Area



Legend

- City
- ◆ High Point in Wilderness
- Route: 4WD or better
- Route: ATV
- County
- Wilderness Area
- Land Managed by BLM
- Nevada State Lands
- Private Land



No warranty is made by the Bureau of Land Management as to the accuracy, reliability, or completeness of these data for individual use or aggregate use with other data.

