



# South Pahroc Range Wilderness

## Bureau of Land Management

**Ely Office**  
(775) 289-1800  
HC Box 33500  
Ely, NV 89301

[www.blm.gov/nv/st/en/fo/ely\\_field\\_office.html](http://www.blm.gov/nv/st/en/fo/ely_field_office.html)

**Caliente Office**  
(775) 726-8100  
P.O. Box 237  
Caliente, NV 89008

**Size:** 25,800 acres

**Elevation:** 5,000-7,950 feet

**Designation:** Lincoln County Conservation, Recreation and Development Act (2004)

### Directions

The South Pahroc Range Wilderness is located in central Lincoln County approximately 30 miles west of Caliente, Nevada. Access this wilderness area from Caliente by driving west on Federal Highway 93 for 28 miles to Twin Spring Road which takes you to the eastern border of the South Pahroc Range Wilderness.



### Area Description

The South Pahroc Range is extremely rugged with deeply cut canyons, high ridges, large rounded boulders and heavily forested expanses. Much of the range is a solitary volcanic massif composed of varying colored layers of welded tuff that have weathered into unusual pockets, columns and stone faces. The lower elevations are gently rolling bajada with widely scattered boulders. The mountain range creates an "island in the sky" effect. Moderately deep, steep-walled drainages cut across the mountain from east to west.

The rocky geologic features are interlaced with stands of pinyon pine, juniper, and white fir, forming isolated glades that provide shady solitude. Corridors of aspen and willow are a welcome contrast to the surrounding desert landscapes. Remember that cutting or removing vegetation is not permitted. Gathering wood for campfires, when permitted, is limited to dead and down material. Wildflowers, predominately paintbrush, add color. Mule deer, mountain lions, newly reintroduced bighorn sheep, golden eagles, and prairie falcons can be found in the area.

### Recreational Opportunities

Hiking, backpacking, horseback riding and camping options are good throughout the South Pahroc Range Wilderness. Climbers and rock scramblers will find challenging routes that culminate in scenic overlooks atop gargantuan geologic features. Vantage points for hikers provide a view of vast desert valleys, interrupted by intervening chains of more distant mountains. Rock hounds may find opalescent feldspar crystals, obsidian, and "Apache tears".

If carrying feed for horseback riding, it needs to be certified weed free. Hunting and non-commercial trapping are allowed under state and local laws within the wilderness area. Remember when camping that it is limited to 14 days and campsites are primitive. Please help preserve Nevada's fragile environments, park your vehicle and set up camp in previously used sites. Impact to the area can be minimized by practicing Leave No Trace ethics.

*Mechanized and motorized vehicles are NOT PERMITTED in a wilderness area.*

### Additional Information

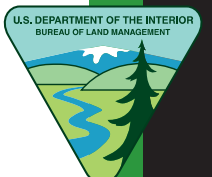
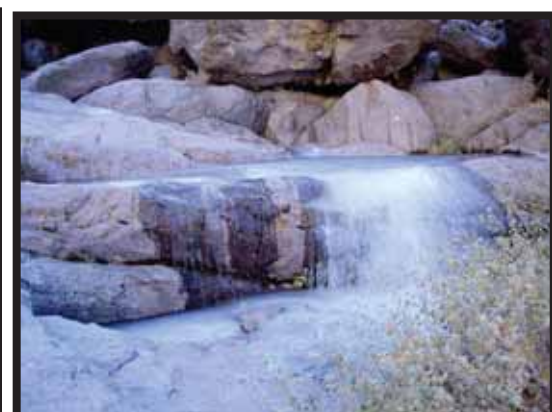
- Signs indicating "Wilderness" and "Closed Road" or "Closed Route" are placed at various intervals. Obey all posted signs.
- Vehicles can be parked outside the wilderness boundary.
- Pets are allowed, but please keep your pets under control at all times.
- Removal, disturbance, or attempting to remove archaeological materials is a felony.
- Contact Ely or Caliente Offices for current road conditions, and hazards.



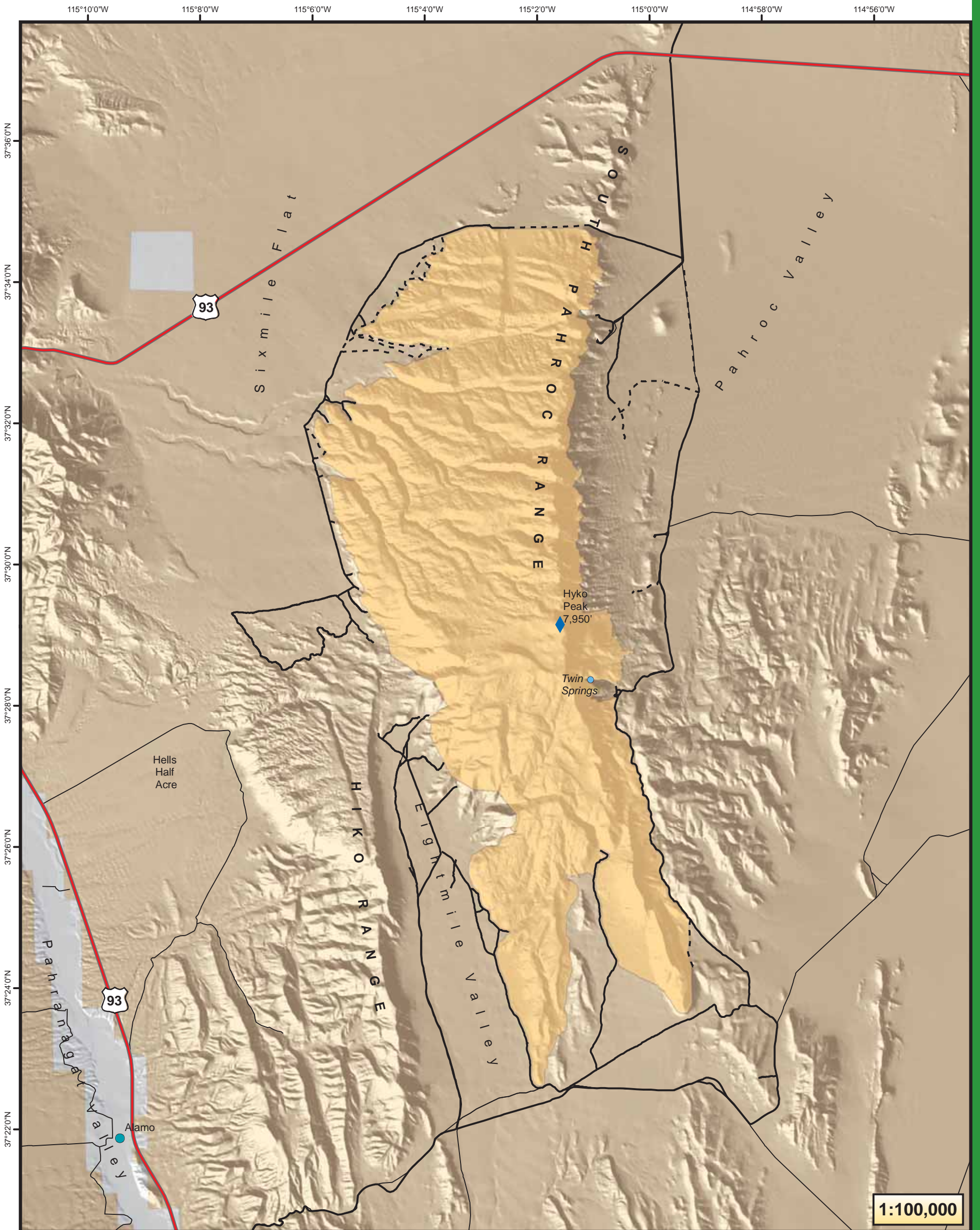
### Maps

USGS 7.5 Quadrangle Maps: Hiko SE, Alamo NE, and Delamar NW

BLM 1:100,000 Maps: Timpahute Range, Pahrnagat Range, and Clover Mountains



# South Pahroc Wilderness Area



## Legend

- City
- ◆ High Point in Wilderness
- Route: 4WD or better
- Route: ATV
- Wilderness Area
- Land Managed by BLM
- Private Land



No warranty is made by the Bureau of Land Management as to the accuracy, reliability, or completeness of these data for individual use or aggregate use with other data.

<b>Timpahute Range</b> 1:100,000 1:24,000 Maps	<b>Caliente</b> 1:100,000
Hiko SE	Pahroc Summit Pass
<b>Pahranagat Range</b> 1:100,000	<b>Clover Mountains</b> 1:100,000
Alamo NE	Delamar NW
Alamo SE	