



# Parsnip Peak Wilderness

## Bureau of Land Management

**Ely Office**  
(775) 289-1800  
HC Box 33500  
Ely, NV 89301

[www.blm.gov/nv/st/en/fo/ely\\_field\\_office.html](http://www.blm.gov/nv/st/en/fo/ely_field_office.html)

**Caliente Office**  
(775) 726-8100  
P.O. Box 237  
Caliente, NV 89008

**Size:** 43,693 acres

**Elevation:** 6,160 - 8,916 feet

**Designation:** Lincoln County Conservation, Recreation and Development Act (2004)

### Directions

The Parsnip Peak Wilderness is located in northeastern Lincoln County, approximately 25 miles north of Pioche, Nevada, within the Wilson Creek Mountain Range. To access this wilderness area, head north out of Pioche on Federal Highway 93, for almost 28 miles. Turn east onto Holt Farm Road (County Road 441), and continue on this bladed dirt road for 10 miles. Turn south onto BLM road 4045. This road is a part of the Mt. Wilson Scenic Byway. After 11 miles you will be along the north eastern boundary of the wilderness area.



### Area Description

The area is pristine, with riparian corridors, wildlife, and forested mountains. Tall mounds of white volcanic rock illustrate the powerful effects of weathering. Curved and undulating, these outcrops contrast with the towering ponderosa pine that grow in cracks and along the edges of the rock.

Forest cover varies with elevation and aspect, with expansive aspen groves predominating on the north slopes and thickets of mountain mahogany blanketing the south. Mule deer and elk browse among the trees. Bald eagles enjoy the pockets of fir which survive in craggy niches in the higher elevations. Native grasses flourish throughout the wilderness. Several springs are edged by yellow monkeyflower.

Abundant prehistoric sites exist here. The Mount Wilson Archaeological District was delineated on the north end of the wilderness and is eligible for nomination for the National Register of Historic Places. Pre-historic sites include campsites, rock rings, rock shelters, and rock art.

### Recreational Opportunities

The Parsnip Peak Wilderness area is good for hiking and camping, backpacking, horseback riding, rock climbing, hunting and trapping, plus the study of archaeology and geology. The wilderness area provides excellent opportunities for solitude, particularly in the thick stands of aspen along the eastern side of Parsnip Peak (8,916 feet). If carrying feed for horseback riding, it needs to be certified weed free. Hunting and non-commercial trapping are allowed under state and local laws within the wilderness area.



Remember when camping that it is limited to 14 days and campsites are primitive. Please help preserve Nevada's fragile environments, park your vehicle and set up camp in previously used sites. Impact to the area can be minimized by practicing Leave No Trace ethics.

*Mechanized and motorized vehicles are NOT PERMITTED in a wilderness area.*

### Additional Information

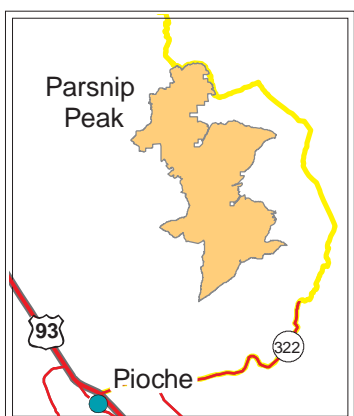
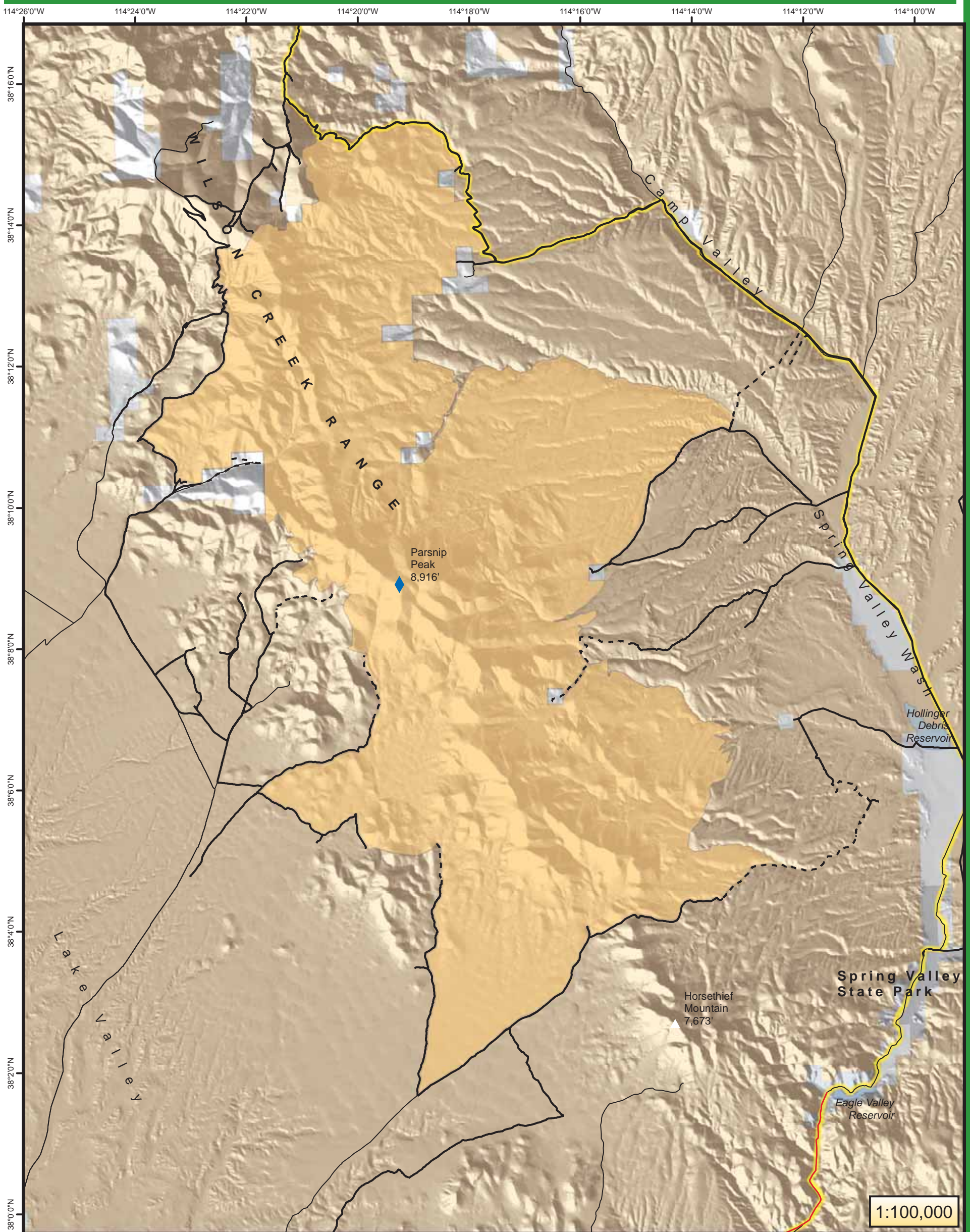
- Signs indicating "Wilderness" and "Closed Road" or "Closed Route" are placed at various intervals. Obey all posted signs.
- Vehicles can be parked outside the wilderness boundary.
- Pets are allowed, but please keep your pets under control at all times.
- Removal, disturbance, or attempting to remove archaeological materials is a felony.
- Contact Ely or Caliente Offices for current road conditions and hazards.

### Maps

USGS 7.5 Quadrangle Maps: Trail Canyon, Mount Wilson, Parsnip Peak, Buck Wash, Pierson Summit, and Eagle Valley  
BLM 1:100,000 Map: Wilson Creek Range



# Parsnip Peak Wilderness Area



## Legend

- City
- ◆ High Point in Wilderness
- Route: 4WD or better
- Route: ATV
- Mt. Wilson Scenic Byway
- Wilderness Area
- Water
- Land Managed by BLM
- Nevada State Park
- Private Land



No warranty is made by the Bureau of Land Management as to the accuracy, reliability, or completeness of these data for individual use or aggregate use with other data.

