



# Mormon Mountains Wilderness

## Bureau of Land Management

**Ely Office**  
(775) 289-1800  
HC Box 33500  
Ely, NV 89301

[www.blm.gov/nv/st/en/fo/ely\\_field\\_office.html](http://www.blm.gov/nv/st/en/fo/ely_field_office.html)

**Caliente Office**  
(775) 726-8100  
P.O. Box 237  
Caliente, NV 89008

**Size:** 157,938 acres

**Elevation:** 2,200 - 7,414 feet

**Designation:** Lincoln County Conservation, Recreation and Development Act (2004)

### Directions

The Mormon Mountain Wilderness is located in southern Lincoln County with a portion in northeastern Clark County, approximately 60 miles from Las Vegas. Access to the northern portion of the wilderness is from Glendale, Nevada 14 miles east on Federal Highway 15 to an unnamed county road northbound. Access to the northern portion of the wilderness starting in Caliente, Nevada is achieved via State Highway 317 through Elgin, Lyman Crossing, and Carp.



### Area Description

The Mormon Mountains region is a land of mountain ranges and canyons that offer colorful geology, majestic wildlife, amazing archaeological sites and beautiful country where one can escape city life. The Mormon mountains is a variable place: from rolling bajadas speckled with cholla, and yucca, to intricately carved canyons forested with pinyon pine and juniper. Finally, the area is crowned with jagged mountain peaks topped with stands of old-growth ponderosa pine. Remember that cutting or removing vegetation is not permitted. Gathering wood for campfires, when permitted, is limited to dead and down material.

The Mormon Mountains Wilderness area provides important habitat for a variety of wildlife. The low elevations provide habitat for the desert tortoise, the banded Gila monster, desert banded gecko, the sidewinder and the long-nosed leopard lizard. Higher in the mountains, it's possible to spot desert bighorn sheep, and bobcats or mountain lions. An impressive variety of raptors live in the area: golden eagle, ferruginous hawk, red-tailed hawk, prairie falcon, Cooper's hawk, northern harrier, merlin and American kestrel.

The geologic story of the Mormon Mountains includes ancient seas depositing sediments across what is now Nevada. These sediments collected seafloor and turned them into fossils, which can now be found in the limestone hills of Mormon Mountains. The mountains give a bird's-eye view of nature's erosional forces at work across the landscape.

Throughout the Mormon Mountains region are some of the most amazing prehistoric sites in Nevada. In the area are literally thousands of archaeological sites that offer telling glimpses into the lives of people who lived in the area hundreds and thousands of years ago. The explorer might find petroglyphs, pictographs, agave roasting pits, prehistoric camp sites, rock shelters, grinding stones, and other evidence of past lives.

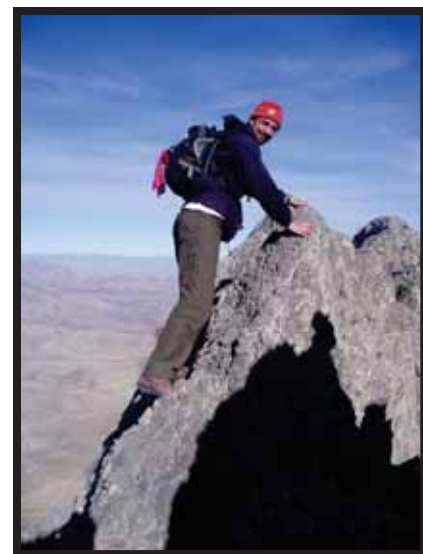
### Recreational Opportunities

The rocky cliffs, narrow drainages and rolling bajadas provide numerous opportunities for solitude in the Mormon Mountains Wilderness area. Recreational opportunities include camping, hiking, backpacking, hunting and horsebackriding. If carrying feed for horseback riding, it needs to be certified weed free. Hunting and non-commercial trapping are allowed under state and local laws within the wilderness area. Remember when camping that it is limited to 14 days and campsites are primitive. Please help preserve Nevada's fragile environments, park your vehicle and set up camp in previously used sites. Impact to the area can be minimized by practicing Leave No Trace ethics.

*Mechanized and motorized vehicles are NOT PERMITTED in a wilderness area.*

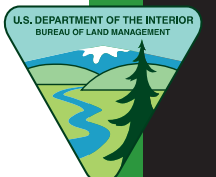
### Additional Information

- Signs indicating "Wilderness" and "Closed Road" or "Closed Route" are placed at various intervals. Obey all posted signs.
- Vehicles can be parked outside the wilderness boundary.
- Pets are allowed, but please keep your pets under control at all times.
- Removal, disturbance, or attempting to remove archaeological materials is a felony.
- Contact Ely or Caliente Offices for current road conditions, and hazards.

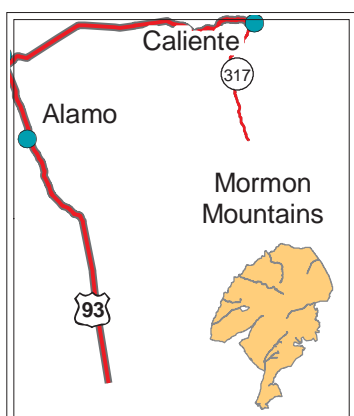
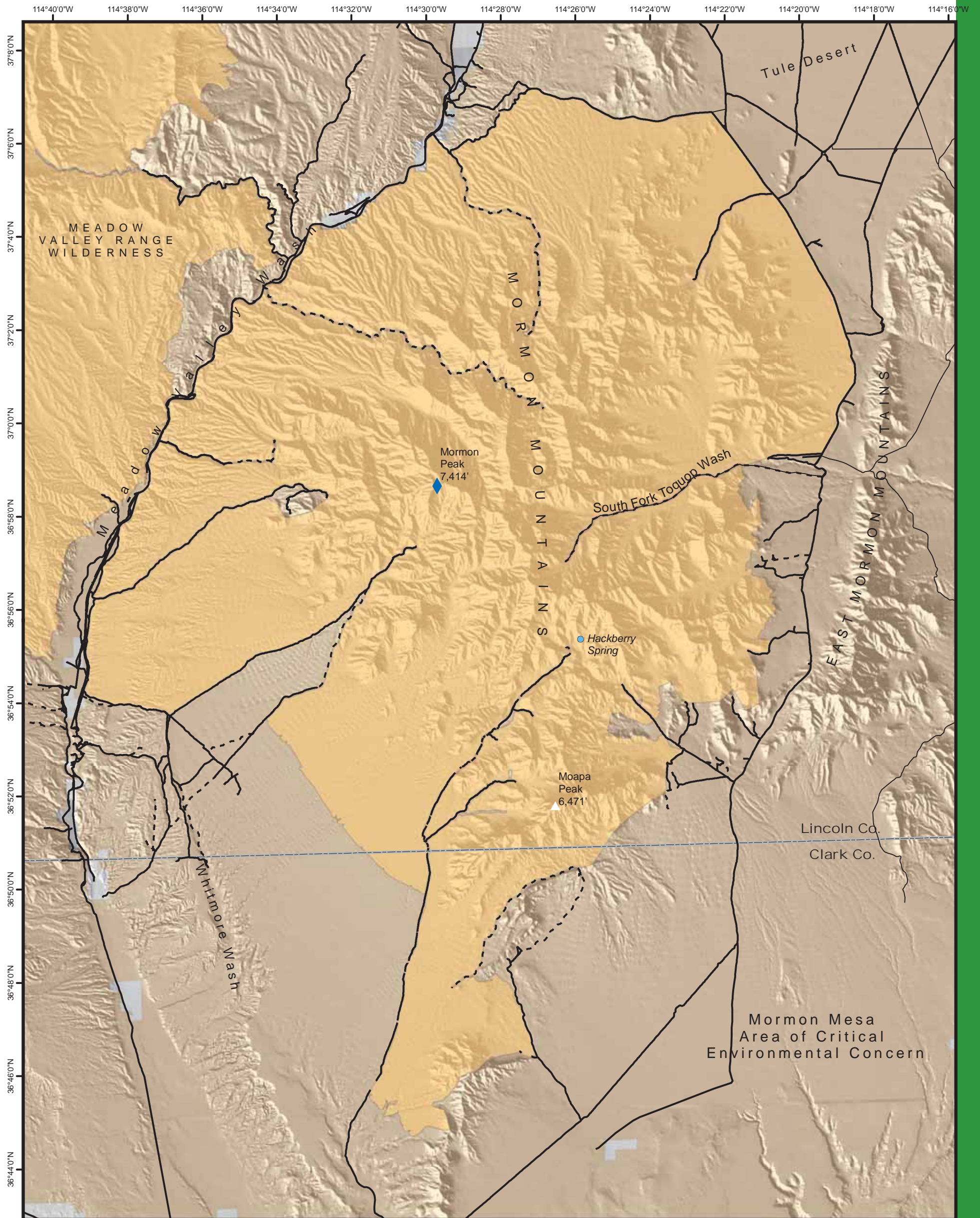


### Maps

USGS 7.5 Quadrangle Maps: Vigo, Carp, Toquop Gap, Rox, Rox NE, Moapa Peak NW, Davidson Peak, Rox SE, and Moapa Peak  
BLM 1:100,000 Maps: Clover Mountains and Overton



# Mormon Mountains Wilderness Area



## Legend

- City
- ◆ High Point in Wilderness
- Route: 4WD or better
- Route: ATV
- County
- Wilderness Area
- Bureau of Land Management
- Private



No warranty is made by the Bureau of Land Management as to the accuracy, reliability, or completeness of these data for individual use or aggregate use with other data.

