



# Tunnel Spring Wilderness

## Bureau of Land Management

**Ely Office**  
(775) 289-1800  
HC Box 33500  
Ely, NV 89301

[www.blm.gov/nv/st/en/fo/ely\\_field\\_office.html](http://www.blm.gov/nv/st/en/fo/ely_field_office.html)

**Caliente Office**  
(775) 726-8100  
P.O. Box 237  
Caliente, NV 89008

**Size:** 5,371 acres

**Elevation:** 5,000-6,700 feet

**Designation:** Lincoln County Conservation, Recreation and Development Act (2004)

### Directions

The Tunnel Spring Wilderness is located in northeastern Lincoln, County, Nevada. Access to this Wilderness area is six miles north of Caliente via the County Road leading to Beaver Dam State Park.



### Area Description

Along the Nevada-Utah border, the Tunnel Springs Wilderness is edged on the southern side by Beaver Dam State Park. Tunnel Springs Wilderness is a land of steep, mountainous canyons, long ridges and rough drainages located at the head of Beaver Dam Wash. Various kinds of volcanic rocks predominate the landscape. Vegetation is mostly pinyon pine, juniper and sagebrush. Along the washes willow, wild rose and other riparian vegetation grow. Remember that cutting or removing vegetation is not permitted. Gathering wood for campfires, when permitted, is limited to dead and down material.

Five to seven miles of streams support trout fisheries, unique in this desert ecosystem. Rainbow trout live in the perennial waters of Beaver Dam Wash. Beaver Dam Creek is known to be habitat for the Virgin River spinedance, speckled dace, and desert sucker. Given the amount of water in the area a variety of wildlife, most notably birds, frequent the wilderness. Birds that may be seen in the area include ferruginous hawk, Swainson's hawk, southern spotted owl, long-billed curlew, mountain plover, western snowy plover, western yellow-billed cuckoo, white-faced ibis, and Arizona Bell's vireo. Rodents include Merriam's kangaroo rat. Larger predators roam the area, including mountain lions.

### Recreational Opportunities

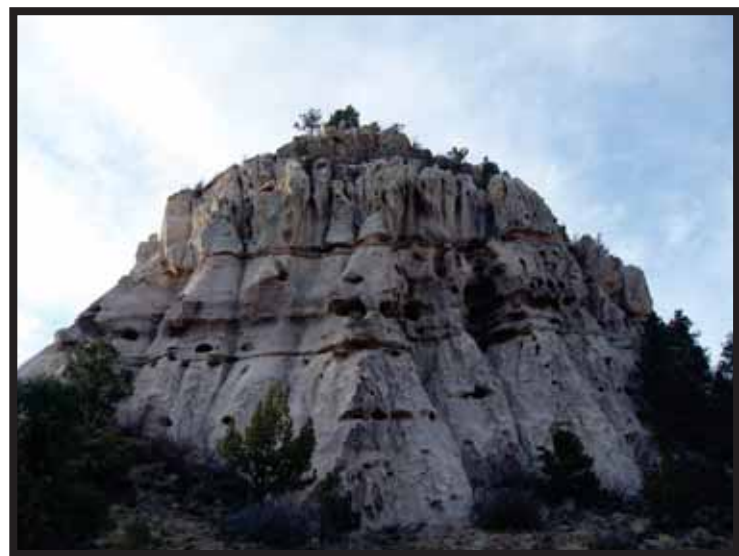
Accessible from the Dixie National Forest Pine Park Campground, the area is too rugged for horseback riding, but good for hiking. Solitude is best among the tributaries and main canyons of the Pine Park-Split Pine Hollow, the tributaries and outcrops in the south rim of Pine Park Canyon, and the lower portion of Sheep Corral Canyon.

If carrying feed for horseback riding, it needs to be certified weed free. Hunting and non-commercial trapping are allowed under state and local laws within the wilderness area. Remember when camping that it is limited to 14 days and campsites are primitive. Please help preserve Nevada's fragile environments, park your vehicle and set up camp in previously used sites. Impact to the area can be minimized by practicing Leave No Trace ethics.

*Mechanized and motorized vehicles are NOT PERMITTED in a wilderness area.*

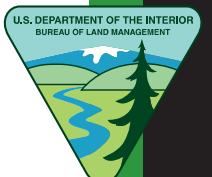
### Additional Information

- Signs indicating "Wilderness" and "Closed Road" or "Closed Route" are placed at various intervals. Obey all posted signs.
- Vehicles can be parked outside the wilderness boundary.
- Pets are allowed, but please keep your pets under control at all times.
- Removal, disturbance, or attempting to remove archaeological materials is a felony.
- Contact Ely or Caliente Offices for current road conditions and hazards.

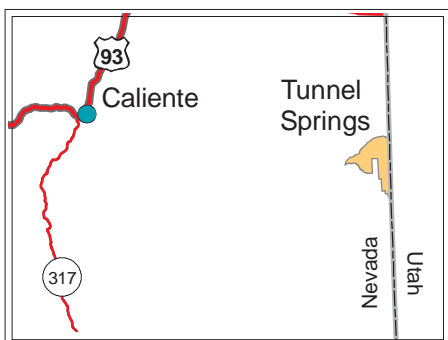
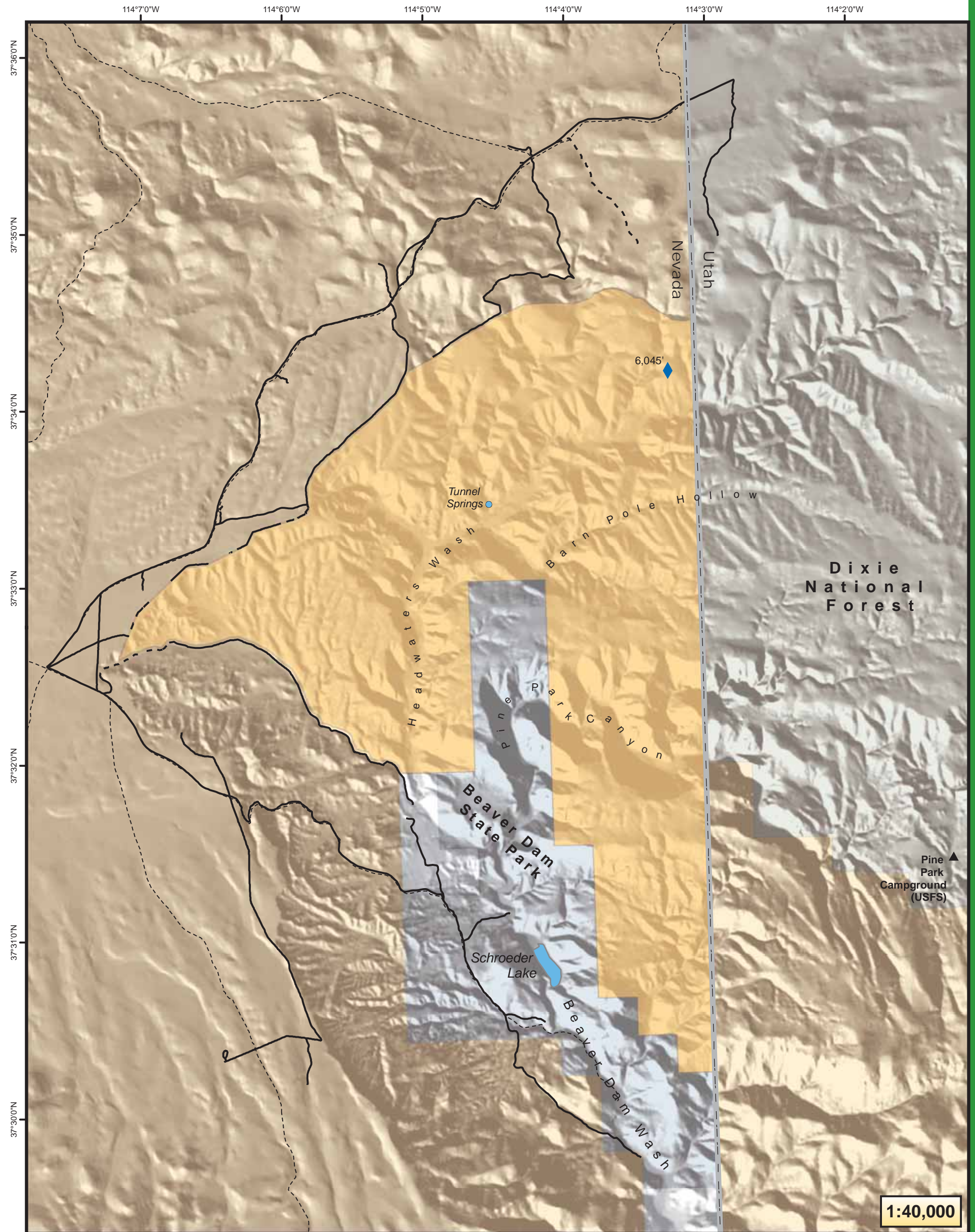


### Maps

USGS 7.5 Quadrangle Maps:  
Pine Park  
BLM 1:100,000 Map: Caliente



# Tunnel Springs Wilderness Area



## Legend

- City
- ◆ High Point in Wilderness
- Route: 4WD or better
- Route: ATV
- Wilderness Area
- Land Managed by BLM
- Nevada State Park
- Private Land
- US Forest Service



No warranty is made by the Bureau of Land Management as to the accuracy, reliability, or completeness of these data for individual use or aggregate use with other data.

