



# White Rock Range Wilderness

## Bureau of Land Management

**Ely Office**  
(775) 289-1800  
HC Box 33500  
Ely, NV 89301

[www.blm.gov/nv/st/en/fo/ely\\_field\\_office.html](http://www.blm.gov/nv/st/en/fo/ely_field_office.html)

**Caliente Office**  
(775) 726-8100  
P.O. Box 237  
Caliente, NV 89008

**Size:** 24,413 acres

**Elevation:** 6,320 - 9,146 feet

**Designation:** Lincoln County Conservation, Recreation and Development Act (2004)

### Directions

The White Rock Range is located in eastern Lincoln County on the Nevada-Utah border. The town of Ursine, Nevada is approximately 15 miles to the southwest and Pioche, Nevada is approximately 25 miles further to the southwest. Access to this Wilderness area is by heading east on the Mt. Wilson Scenic Byway from either Pony Springs or Pioche.



### Area Description

The White Rock Wilderness is a rarely visited pristine mountain range with gently rolling foothills covered in sagebrush, pinyon pine and juniper, and scattered ponderosa pines. Numerous side canyons and drainages dissect the north-south trending range. A high, windswept plateau covered with aspens and pockets of white fir lies toward the northern end of the area and stretches toward White Rock Peak (9,146 feet). Remember that cutting or removing vegetation is not permitted. Gathering wood for campfires, when permitted, is limited to dead and down material.

Numerous springs along with two high mountain lakes having intermittent water support grassy meadows and lush riparian vegetation important to the elk and mule deer in the area. Colorful volcanic boulders and eroded volcanic ash and columnar peaks jut out over the trees. Wild horses also frequent the higher elevations.

### Recreational Opportunities

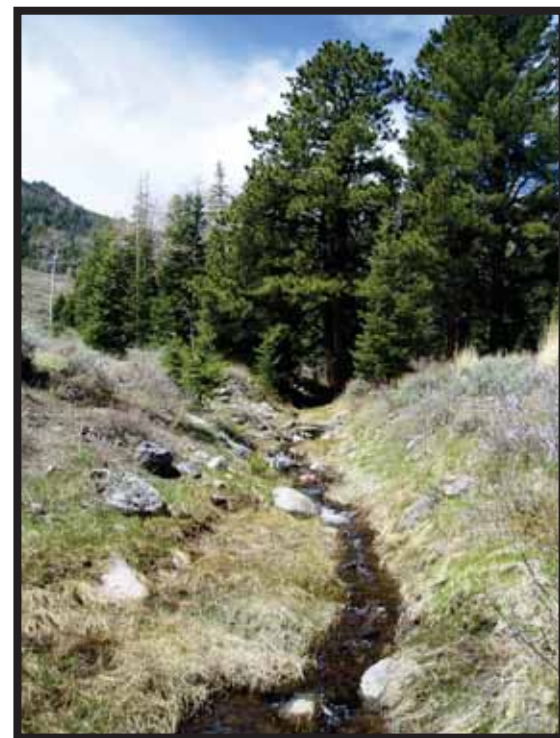
Solitude and primitive recreational opportunities are easy to find in this wilderness area with its varied topography and remoteness. Activities include camping, hiking, backpacking, hunting and horsebackriding. If carrying feed for horseback riding, it needs to be certified weed free. Hunting and non-commercial trapping are allowed under state and local laws within the wilderness area. Hunting the introduced Rio Grande wild turkeys, in addition to elk and deer, is becoming more popular.

Remember when camping that it is limited to 14 days and campsites are primitive. Please help preserve Nevada's fragile environments, park your vehicle and set up camp in previously used sites. Impact to the area can be minimized by practicing Leave No Trace ethics.

*Mechanized and motorized vehicles are NOT PERMITTED in a wilderness area.*

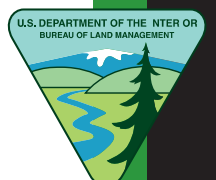
### Additional Information

- Signs indicating "Wilderness" and "Closed Road" or "Closed Route" are placed at various intervals. Obey all posted signs.
- Vehicles can be parked outside the wilderness boundary.
- Pets are allowed, but please keep your pets under control at all times.
- Removal, disturbance, or attempting to remove archaeological materials is a felony.
- Contact Ely or Caliente Offices for current road conditions and hazards.

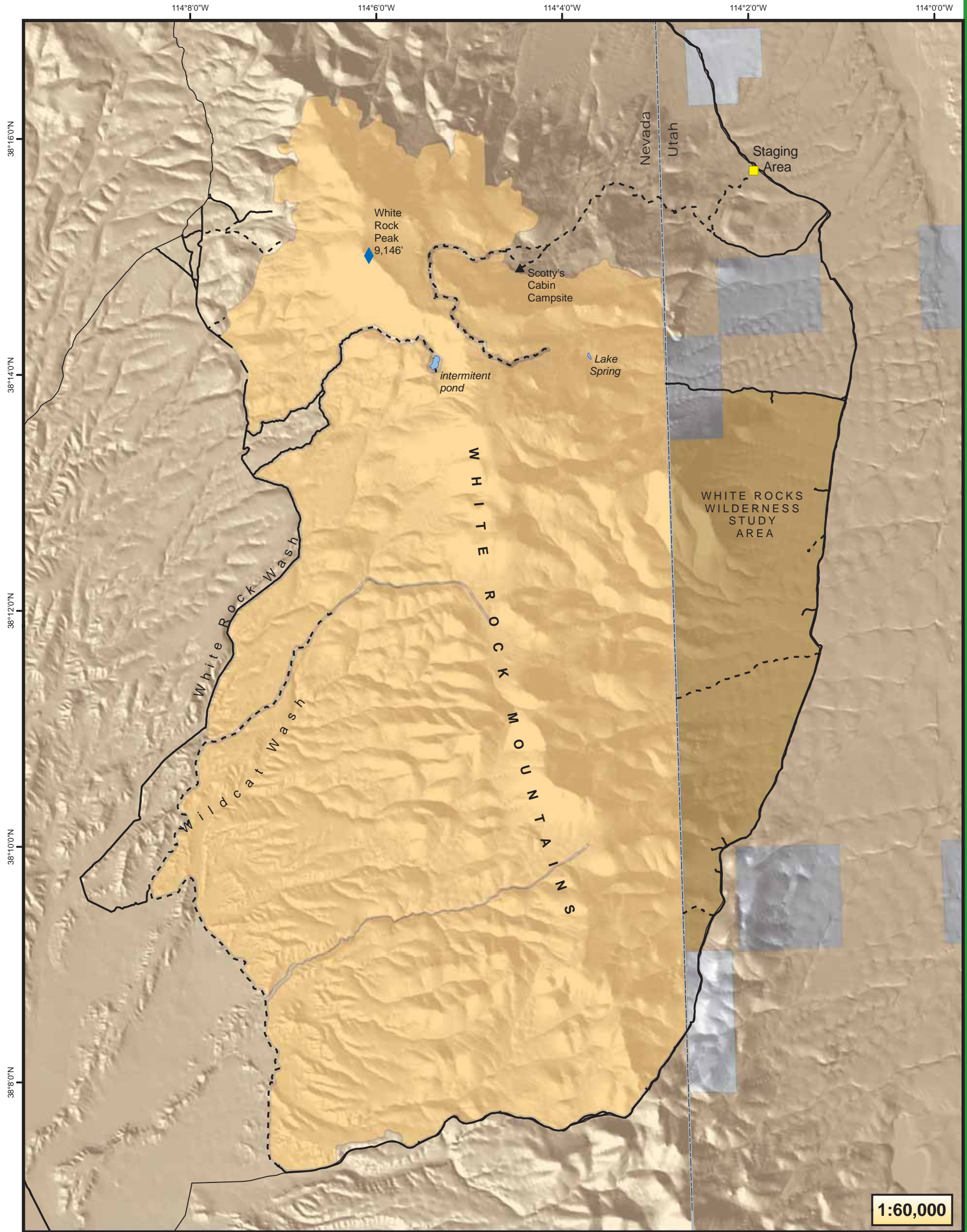


### Maps

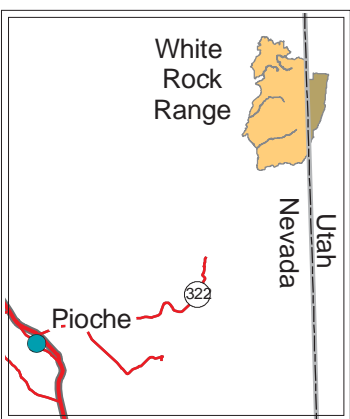
USGS 7.5 Quadrangle Maps: Gleason Basin, Buck Wash Well, White Rock Peak, and Rice Mountain  
BLM 1:100,000 Map: Wilson Creek Range



# White Rock Range Wilderness Area



1:60,000



### Legend

- City
- ◆ High Point in Wilderness
- Route: 4WD or better
- Route: ATV
- Wilderness Area
- Wilderness Study Area
- Land Managed by BLM
- State Land
- Private Land



No warranty is made by the Bureau of Land Management as to the accuracy, reliability, or completeness of these data for individual use or aggregate use with other data.

<b>Wilson Creek Range</b> <b>1:100,000</b> Miller Canyon	1:24,000 Maps Gleason Basin
Buck Wash Well	White Rock Peak
Eagle Valley Reservoir	Rice Mountain