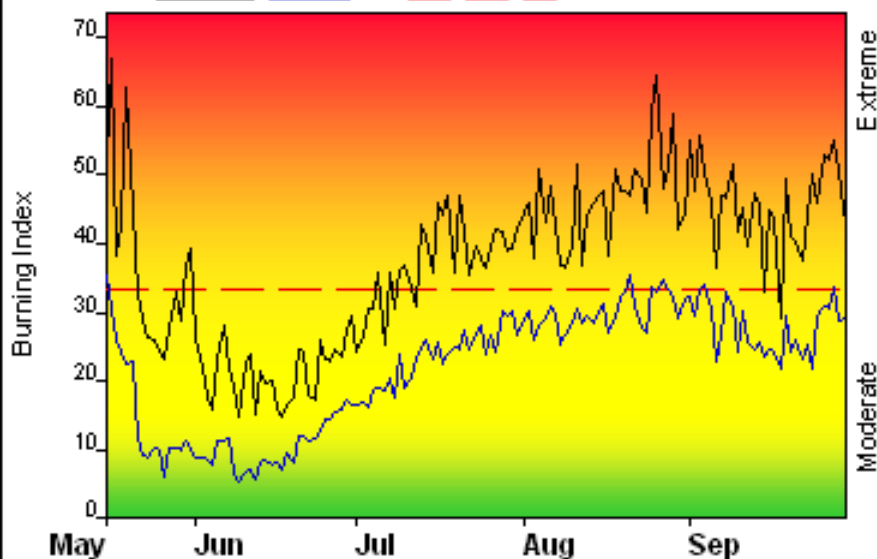


FIRE DANGER -- BLM Central Montana Fire Zone

Maximum, Average, and 80th Percentile, based on 11 years data



Fire Danger Area:

- ◆ BLM Central MT Fire Zone
- ◆ 112 - 115, 117, 134 - 137
- ◆ Armells 242205 RA/W/S
- * Meets NWCG Wx Station Standards



Fire Danger Interpretation:



- EXTREME** -- Use extreme caution
- (Caution)** -- Watch for change
- Moderate** -- Lower Potential, but always be aware

Maximum -- Highest Burning Index by day for 2000 - 2010

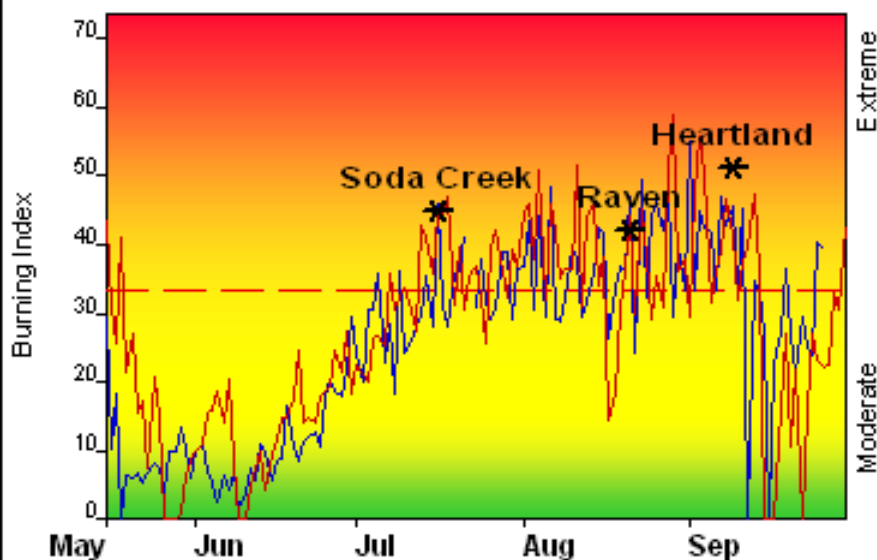
Average -- shows peak fire season over 11 years (1504 observations)

80th Percentile -- Only 20% of the 1504 days from 2000 - 2010 had an Burning Index above 33

Local Thresholds - Watch out:

Combinations of any of these factors can greatly increase fire behavior:
20' Wind Speed over 15 mph, RH less than 20%,
Temperature over 80, Burning Index over 33

Years to Remember: 2003 2006



Fuel Model: C - Pine-Grass Savanna

Remember what Fire Danger tells you:

- ✓ Burning Index gives day-to-day fluctuations calculated from 2 pm temperature, humidity, wind, daily temperature & rh ranges, and precip duration.
- ✓ Wind is part of BI calculation.
- ✓ Watch local conditions and variations across the landscape -- Fuel, Weather, Topography.
- ✓ Listen to weather forecasts -- especially WIND.

Past Experience:

The majority of large fires occurring in the Central Zone are wind driven. Pay close attention to predicted frontal passages and wind events. Average normal wind speed is 12 miles per hour.

Zone vegetation is primarily perennial grasses and open pine savanna. Fuel Model C was chosen to best represent the area where most ignitions occur.

Raven Fire (8/21/10) - 13,949 acres, Soda Creek Fire (7/16/06) - 32,237 acres, Heartland Fire (9/9/05) - 13,466 acres.

SIG: 242205 Armells, 242302 Chain Butte, 242303 Dry Blood

Responsible Agency: Montana Dakotas BLM, Central Zone

FF+4.0 04/11/2011-08:07 (L:\Fire_Management\Fire_Folk's_Folders\Cathy_B...\CMFZ_2011)

Design by NWCG Fire Danger Working Team