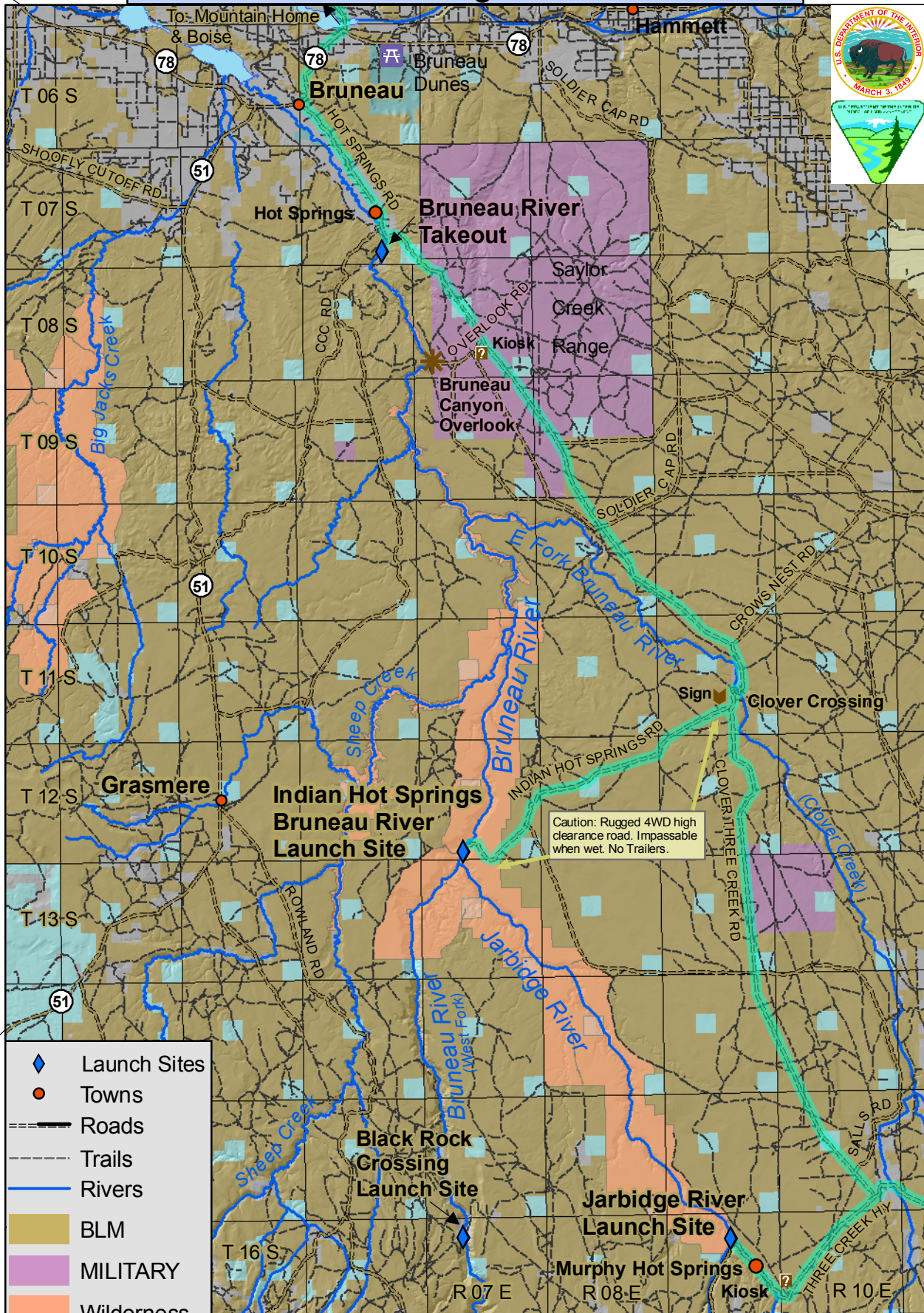


Launch Site Access Routes Bruneau & Jarbidge Rivers, Idaho

To: Grand View



Caution: Rugged 4WD high clearance road. Impassable when wet. No Trailers.

- Launch Sites
- Towns
- Roads
- Trails
- Rivers
- BLM
- MILITARY
- Wilderness
- PRIVATE
- STATE

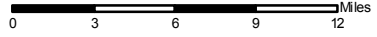
To: Riddle

To: Rowland, NV

To: Jarbidge, NV

To: Rogerson & US 93

No warranty is made by the Bureau of Land Management. The accuracy, reliability, or completeness of these data for individual use or aggregate use with other data is not guaranteed.



Route names may not be posted.
Compiled: SEP 2009 BLM
...GISuser\Bruneau\FO\Recreation\RiverAccess\brun_launch.mxd