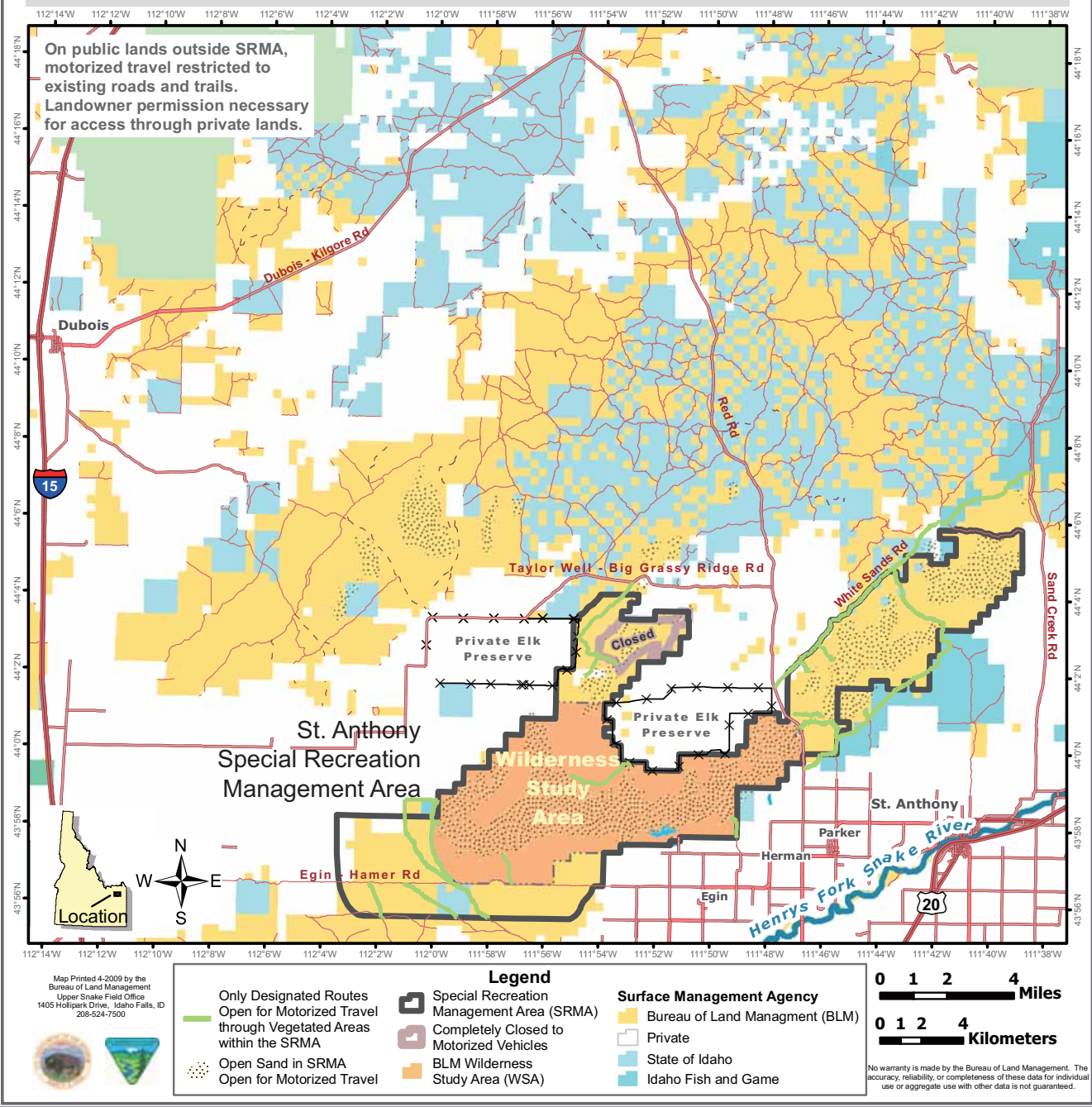


Outside SRMA, Motorized Travel Limited to Existing Roads and Trails



Areas Opening for the Season at St. Anthony Sand Dunes

St. Anthony Sand Dunes and the surrounding habitat provides year round habitat for sage and sharp-tailed grouse and critical winter range for 2,500 elk, 1,500 mule deer and 500 moose.

In 1997, to protect wintering big game, local, state, and federal officials created the Egin-Hamer Winter Closure Area. This closure restricts human entry during critical winter and spring months (January 1st through April 30th).

Big game shed their antlers during the winter months. Hundreds of visitors or horn hunters come to gather the antlers in the spring. Many visitors use OHVs to access the more remote areas. Currently OHV use is limited to the open sands or designated routes within the SRMA Boundary. Impacts from OHV use outside the open sands or on undesignated routes include:

- direct habitat destruction,
- increase spread of noxious weeds, and
- potential disturbance of wildlife when fat reserves are already depleted.

Unless a route is specifically signed open with a "designated route" sign it is closed to motorized use. Public lands north and south of the St. Anthony SRMA that are part of the Egin-Hamer Winter Closure area are limited to riding on existing roads only. No off road (cross-country) travel is allowed.

Help us protect this critical habitat. Ride only on open dunes or designated routes within the SRMA or on existing roads outside the SRMA. Access to remote areas is available via non-motorized means (i.e., foot, horse, etc.).

BLM / IDFG / FREMONT COUNTY

Bureau of Land Management / Upper Snake Field Office
1405 Hollipark Drive
Idaho Falls, ID. 83401
(208)524-7500

Idaho Fish and Game / Upper Snake Region
4279 Commerce Circle
Idaho Falls, ID 83401
(208) 525-7290

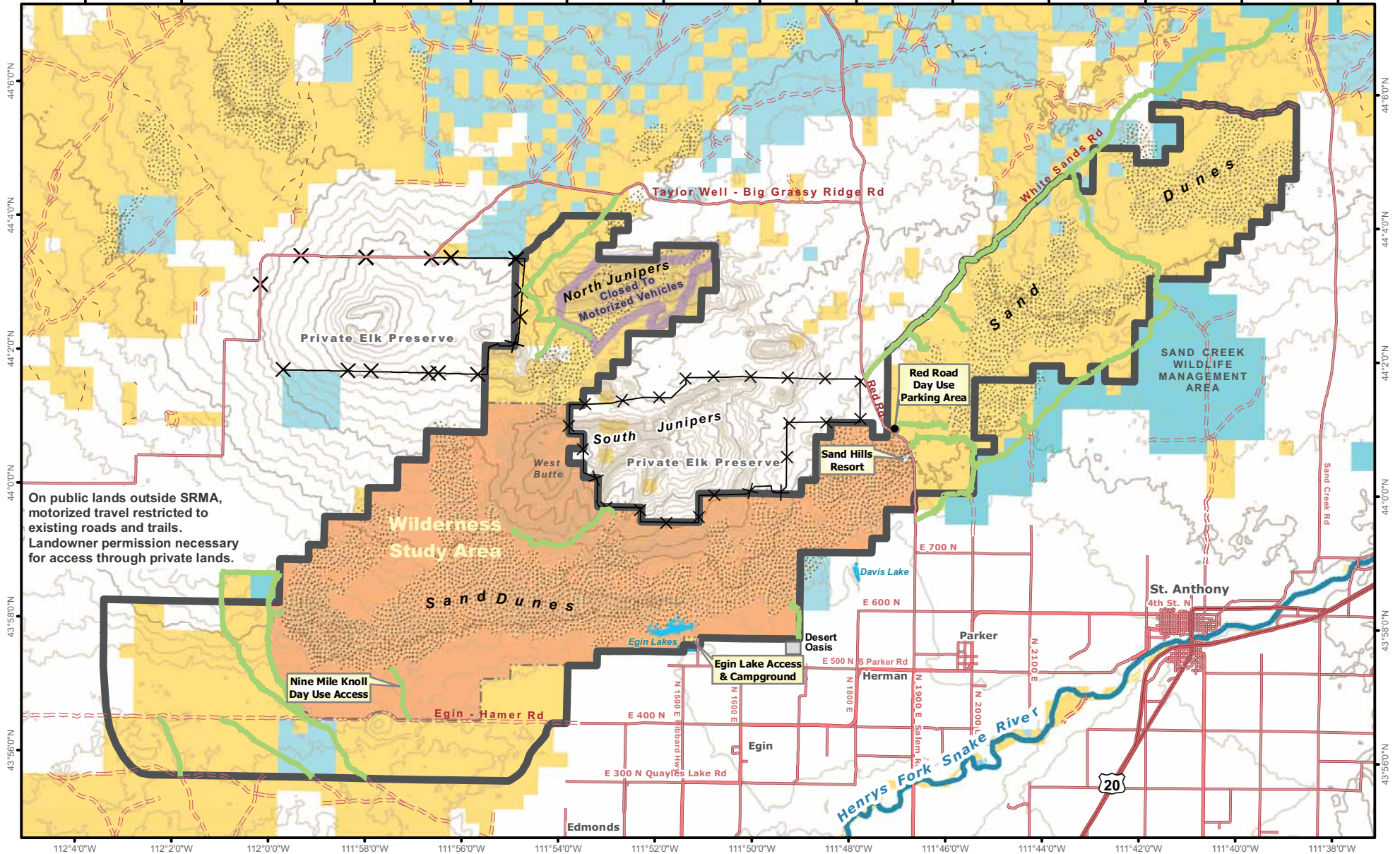
Fremont County
151 West 1st North
St. Anthony, ID. 83445
(208)624-7332





Designated Routes within the St Anthony Sand Dunes SRMA

112°40'W 112°20'W 112°00'W 111°58'W 111°56'W 111°54'W 111°52'W 111°50'W 111°48'W 111°46'W 111°44'W 111°42'W 111°40'W 111°38'W



On public lands outside SRMA, motorized travel restricted to existing roads and trails. Landowner permission necessary for access through private lands.

Map Printed 4-2009 by the Bureau of Land Management Upper Snake Field Office 1405 Hollipark Drive, Idaho Falls, ID 208-524-7500

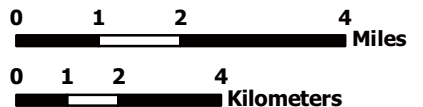


Legend

- Only Designated Routes Open for Motorized Travel through Vegetated Areas within the SRMA
- Open Sand in SRMA Open for Motorized Travel
- Special Recreation Management Area (SRMA)
- Completely Closed to Motorized Vehicles
- BLM Wilderness Study Area (WSA)

Surface Management Agency

- Bureau of Land Management (BLM)
- Private
- State of Idaho
- Idaho Fish and Game



No warranty is made by the Bureau of Land Management. The accuracy, reliability, or completeness of these data for individual use or aggregate use with other data is not guaranteed.

44°50'N 44°40'N 44°30'N 44°20'N 44°10'N 44°00'N 43°50'N