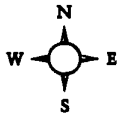
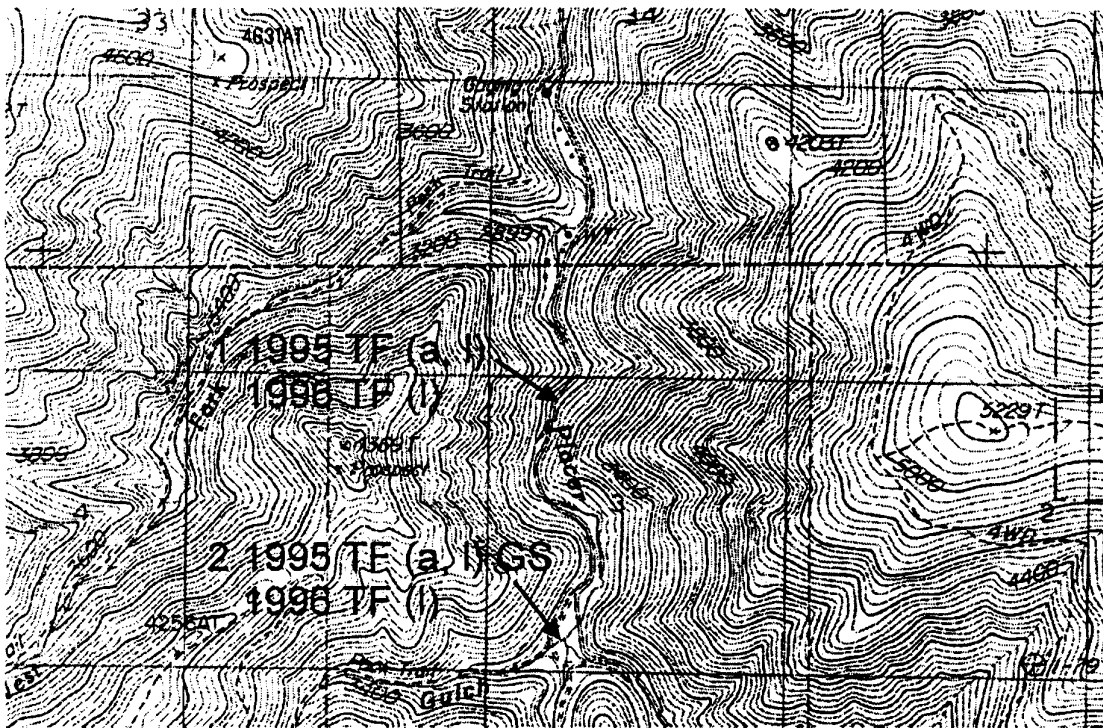


# Wallace, Idaho Central



LTS = Long-toed Salamander  
 IGS = Idaho Giant Salamander  
 CDS = Coeur d'Alene Salamander  
 TF = Tailed Frog  
 WT = Western (Boreal) Toad  
 PTF = Pacific Treefrog  
 SF = Spotted Frog  
 BF = Bullfrog  
 GS = Western Terrestrial (Wandering)  
     Garter Snake  
 CS = Common Garter Snake

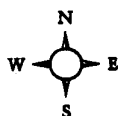
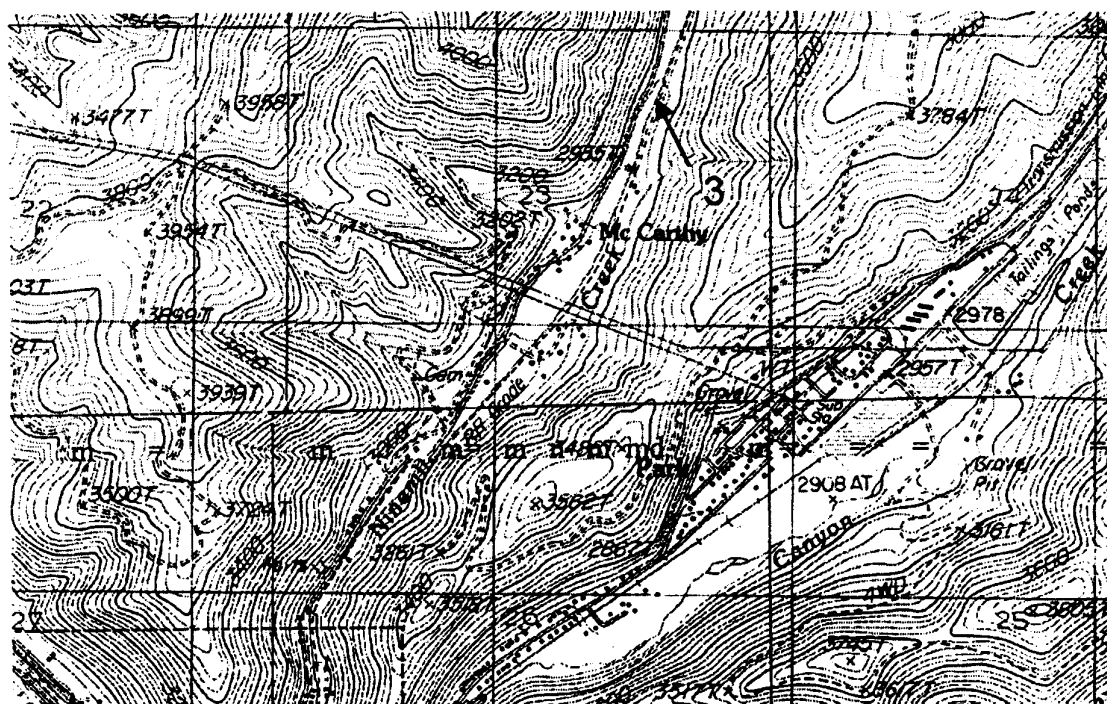
1 km

a = adult(s)  
 c = calling  
 e = eggs  
 l = larvae or tadpoles  
 m = metamorphs (amphibian)  
 n = neonates (reptile)  
 j = juveniles

Figure 11. Amphibian and reptile observations from the 1995 and 1996 survey. The map was scanned from the Wallace Idaho Quadrangle Idaho, 7.5 minute series (Topographic) 1986 map. The numbers correspond to the site numbers in Table 3. Capital letters indicate species. Small case letters indicate life stage. See legend above.

Site No.	Site Name	Location	Type	Species Breeding	Remarks
3	Nine Mile creek	9 Mile Creek - 1.9 mi N of I-90 overpass on Nine Mile Creek Road.	stream		Site highly disturbed. Entire area reclaimed, pools added, channel altered, few aquatic insects.

# Wallace, Idaho Northeast



LTS = Long-toed Salamander  
 IGS = Idaho Giant Salamander  
 CDS = Coeur d'Alene Salamander  
 TF = Tailed Frog  
 WT = Western (Boreal) Toad  
 PTF = Pacific Treefrog  
 SF = Spotted Frog  
 BF = Bullfrog  
 GS = Western Terrestrial (Wandering)  
     Garter Snake  
 CS = Common Garter Snake

1 km

a = adult(s)  
 c = calling  
 e = eggs  
 l = larvae or tadpoles  
 m = metamorphs (amphibian)  
 n = neonates (reptile)  
 j = juveniles

Figure 12. Amphibian and reptile observations from the 1995 and 1996 survey. The map was scanned from the Wallace Quadrangle Idaho, 7.5 minute series (Topographic) 1986 map. The numbers correspond to the site numbers in Table 3. Capital letters indicate species. Small case letters indicate life stage. See legend above.

Site No.	Site Name	Location	Type	Species Breeding	Remarks
4	Canyon Creek	Canyon Creek - 1.8 mi N of I-90 overpass on paved road.	stream		Site highly disturbed. Entire area reclaimed, pools added, channel altered, few aquatic insects.
5	Canyon Creek Seep	Canyon Creek - 1.8 mi N of I-90 overpass on paved road, east side of creek against canyon wall.	pond	Long-toed Salamanders	2' deep, area used as ATV trails, Adult AMMA located 100 m south of breeding pond/ Entire area dry at second visit. Presume no AMMA metamorphosed.

# Osburn, Idaho Southeast Corner

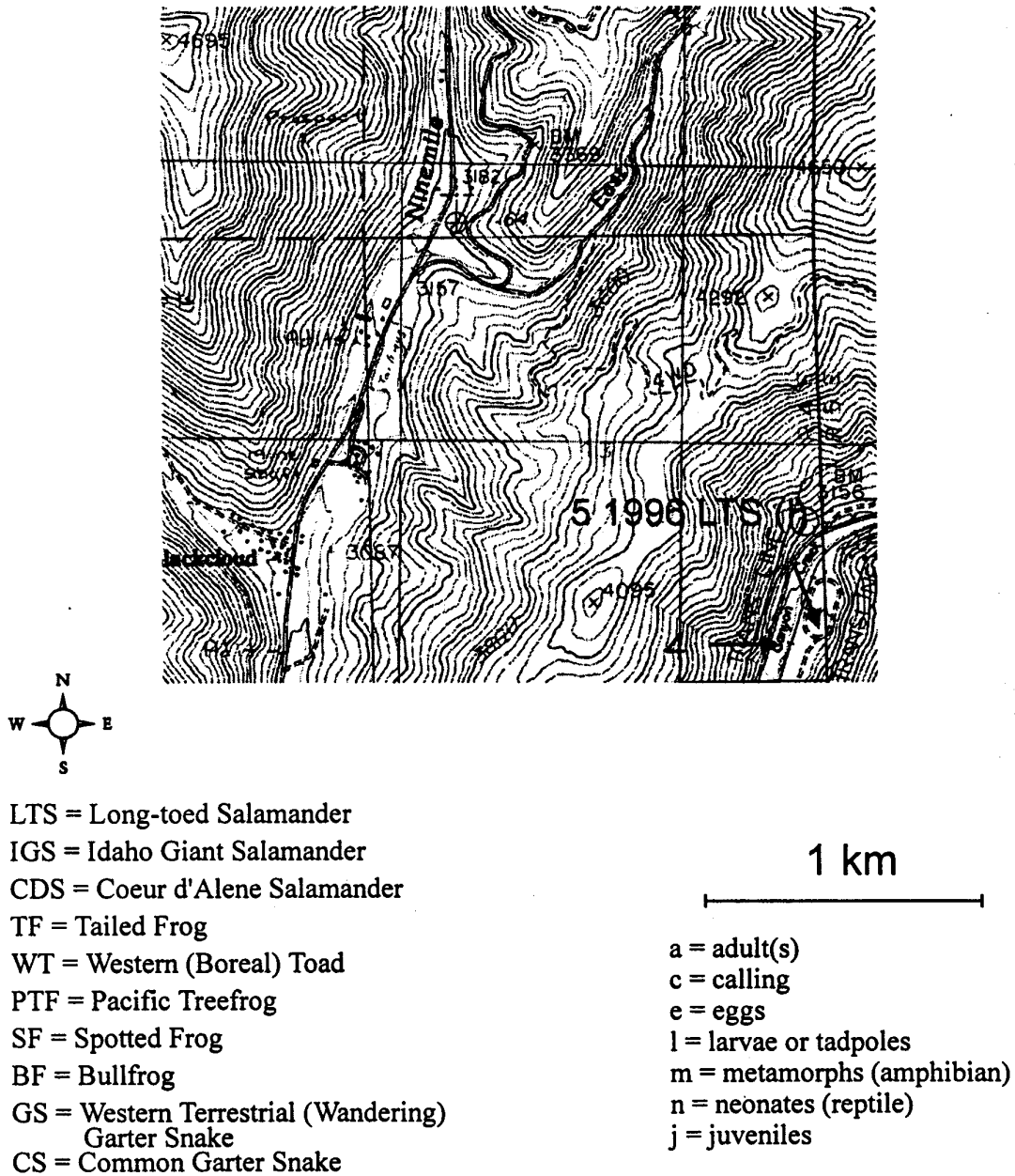
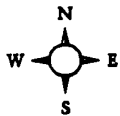
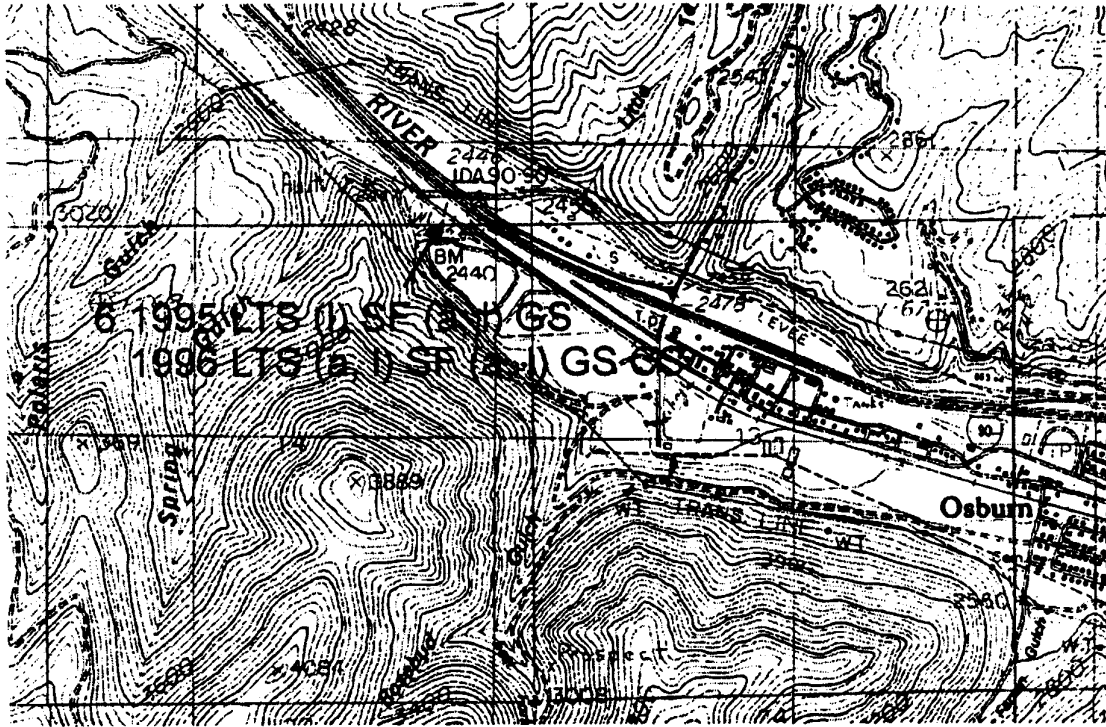


Figure 13. Amphibian and reptile observations from the 1995 and 1996 survey. The map was scanned from the Osburn Quadrangle Idaho, 7.5 minute series (Topographic) 1986 map. The numbers correspond to the site numbers in Table 3. Capital letters indicate species. Small case letters indicate life stage. See legend above.

Site No.	Site Name	Location	Type	Species Breeding	Remarks
6	Gene Day Park	Gene Day Park - 1.7 mi W of Osburn on Warm Mullan Road.	pond	Long-toed Salamanders, Spotted Frogs	9 RAPR adults; 4 RAPR juveniles; tads; 1 AMMA adult (gravid), observed THSI eating RAPR adult.

# Kellogg East, Idaho Southeast



LTS = Long-toed Salamander  
 IGS = Idaho Giant Salamander  
 CDS = Coeur d'Alene Salamander  
 TF = Tailed Frog  
 WT = Western (Boreal) Toad  
 PTF = Pacific Treefrog  
 SF = Spotted Frog  
 BF = Bullfrog  
 GS = Western Terrestrial (Wandering)  
     Garter Snake  
 CS = Common Garter Snake

1 km

a = adult(s)  
 c = calling  
 e = eggs  
 l = larvae or tadpoles  
 m = metamorphs (amphibian)  
 n = neonates (reptile)  
 j = juveniles

Figure 14. Amphibian and reptile observations from the 1995 and 1996 survey. The map was scanned from the Kellogg East Quadrangle Idaho, 7.5 minute series (Topographic) 1986 map. The numbers correspond to the site numbers in Table 3. Capital letters indicate species. Small case letters indicate life stage. See legend above.

Site No.	Site Name	Location	Type	Species Breeding	Remarks
7	Memorial Pond	Pond at turnoff to Elk Creek.	pond	Long-toed Salamanders	
8	Polaris Creek	Polaris Creek - 1.6 mi S of I-90, 1.5 mi S along improved road; hike 75 m to creek.	stream	Tailed Frogs	I found that slowly walking up stream and looking more effective than rock turning.