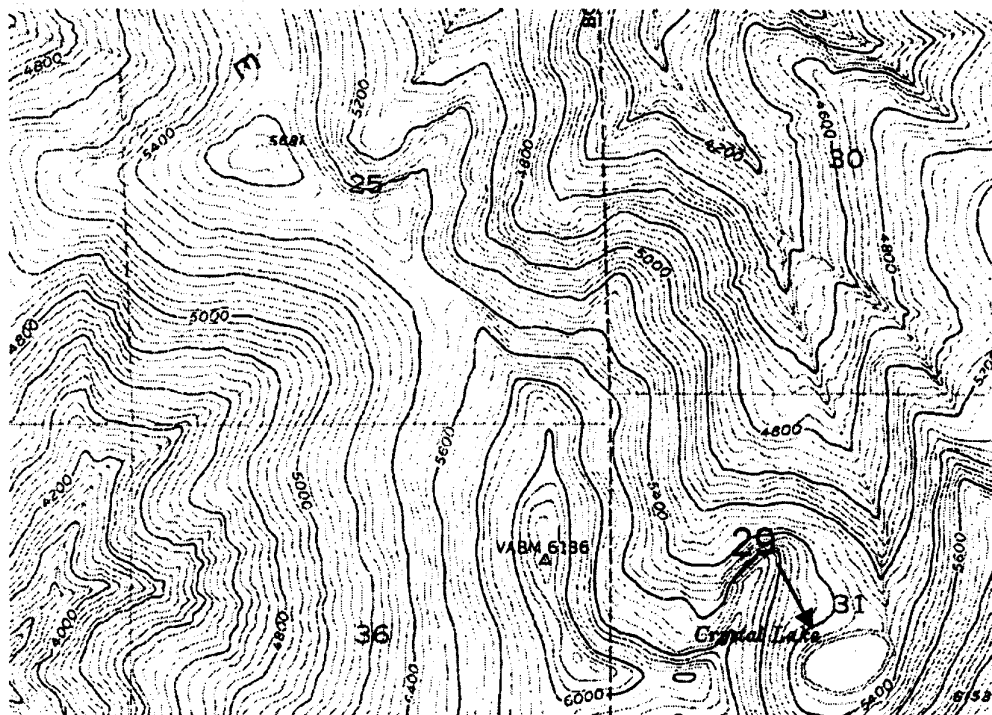


Rochat Peak, Idaho Southeast Corner



LTS = Long-toed Salamander
 IGS = Idaho Giant Salamander
 CDS = Coeur d'Alene Salamander
 TF = Tailed Frog
 WT = Western (Boreal) Toad
 PTF = Pacific Treefrog
 SF = Spotted Frog
 BF = Bullfrog
 GS = Western Terrestrial (Wandering)
 Garter Snake
 CS = Common Garter Snake

1 km

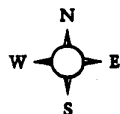
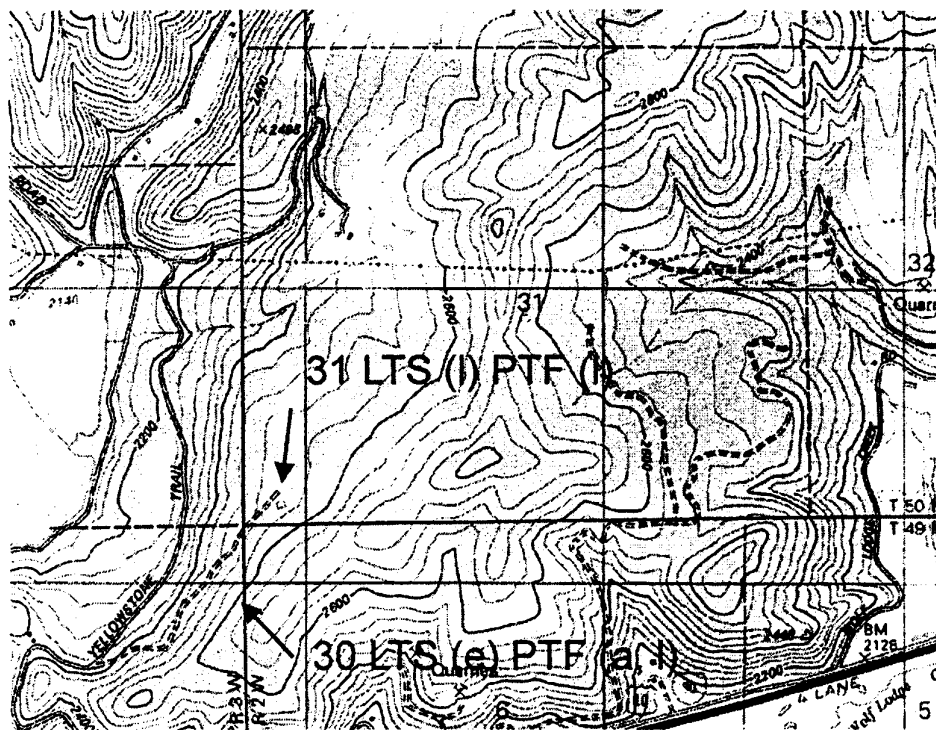


a = adult(s)
 c = calling
 e = eggs
 l = larvae or tadpoles
 m = metamorphs (amphibian)
 n = neonates (reptile)
 j = juveniles

Figure 27. Amphibian and reptile observations from the 1995 and 1996 survey. The map was scanned from the Rochat Peak Quadrangle Idaho, 7.5 minute series (Topographic) 1986 map. The numbers correspond to the site numbers in Table 3. Capital letters indicate species. Small case letters indicate life stage. See legend above.

Site No.	Site Name	Location	Type	Species Breeding	Remarks
30	Jack Forest Pond 1	Jack Forest Property 1st pond.	pond	Long-toed Salamanders and Pacific Treefrogs	Excellent site for teaching field trips site contains many species with easy access.
31	Jack Forest Pond 2	Jack Forest Property 2nd pond adjacent to old corral.	pond	Long-toed Salamanders and Pacific Treefrogs	Excellent site for teaching field trips site contains many species with easy access.

Fernan Lake, Idaho Southeast



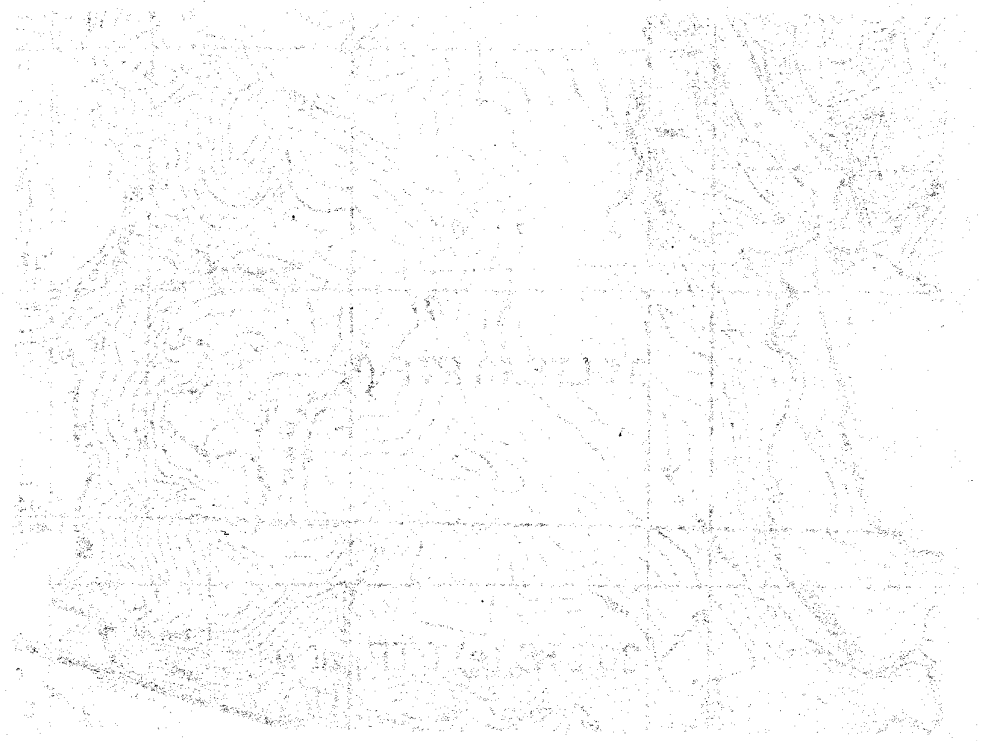
LTS = Long-toed Salamander
 IGS = Idaho Giant Salamander
 CDS = Coeur d'Alene Salamander
 TF = Tailed Frog
 WT = Western (Boreal) Toad
 PTF = Pacific Treefrog
 SF = Spotted Frog
 BF = Bullfrog
 GS = Western Terrestrial (Wandering)
 Garter Snake
 CS = Common Garter Snake

1 km

a = adult(s)
 c = calling
 e = eggs
 l = larvae or tadpoles
 m = metamorphs (amphibian)
 n = neonates (reptile)
 j = juveniles

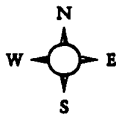
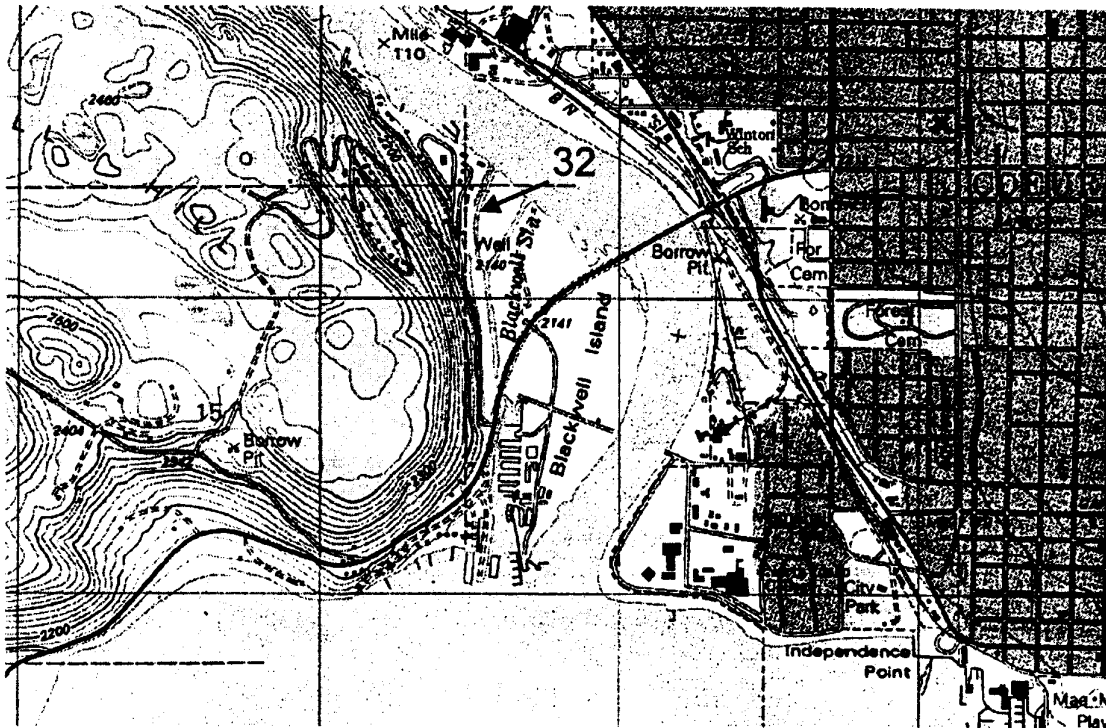
Figure 28. Amphibian and reptile observations from the 1995 and 1996 survey. The map was scanned from the Fernan Lake Quadrangle Idaho, 7.5 minute series (Topographic) 1986 map. The numbers correspond to the site numbers in Table 3. Capital letters indicate species. Small case letters indicate life stage. See legend above.

Site No.	Site Name	Location	Type	Species Breeding	Remarks
32	Blackwell Island	Rt. 95. 0.5 mi. south of Coeur d'Alene.			Found no herps.



[Faint, illegible text, possibly bleed-through from the reverse side of the page]

Coeur d'Alene, Idaho Center



LTS = Long-toed Salamander
 IGS = Idaho Giant Salamander
 CDS = Coeur d'Alene Salamander
 TF = Tailed Frog
 WT = Western (Boreal) Toad
 PTF = Pacific Treefrog
 SF = Spotted Frog
 BF = Bullfrog
 GS = Western Terrestrial (Wandering)
 Garter Snake
 CS = Common Garter Snake

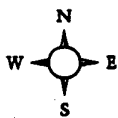
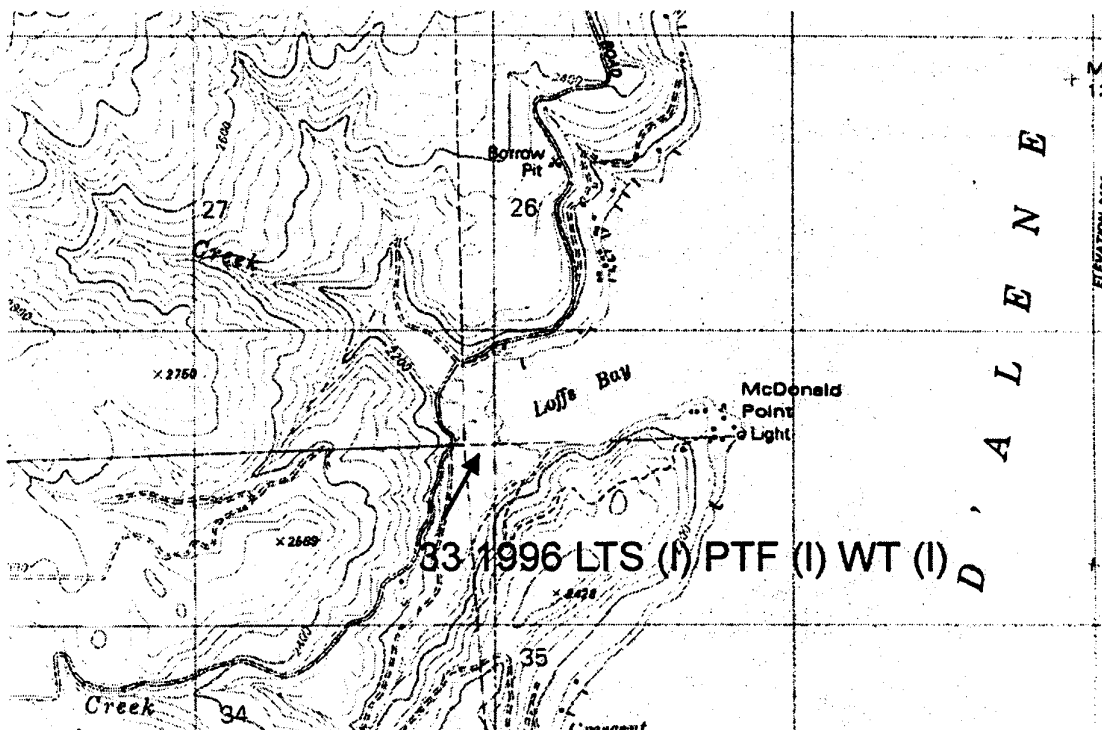
1 km

a = adult(s)
 c = calling
 e = eggs
 l = larvae or tadpoles
 m = metamorphs (amphibian)
 n = neonates (reptile)
 j = juveniles

Figure 29. Amphibian and reptile observations from the 1995 and 1996 survey. The map was scanned from the Coeur d'Alene Quadrangle Idaho, 7.5 minute series (Topographic) 1986 map. The numbers correspond to the site numbers in Table 3. Capital letters indicate species. Small case letters indicate life stage. See legend above.

Site No.	Site Name	Location	Type	Species Breeding	Remarks
33	Loft's Bay	Loft's Bay, Lake Coeur d' Alene.	bay, canals, stream	Long-toed Salamanders, Western Toads, and Pacific Treefrogs	Very large area with several different habitat types: lake riparian (BUBU), series ponds and canals of canals (PSRE, RAPR and AMMA). Site has all speies except PLID (probably there).

Mica Bay, Idaho West Central



LTS = Long-toed Salamander
 IGS = Idaho Giant Salamander
 CDS = Coeur d'Alene Salamander
 TF = Tailed Frog
 WT = Western (Boreal) Toad
 PTF = Pacific Treefrog
 SF = Spotted Frog
 BF = Bullfrog
 GS = Western Terrestrial (Wandering)
 Garter Snake
 CS = Common Garter Snake

1 km

a = adult(s)
 c = calling
 e = eggs
 l = larvae or tadpoles
 m = metamorphs (amphibian)
 n = neonates (reptile)
 j = juveniles

Figure 30. Amphibian and reptile observations from the 1995 and 1996 survey. The map was scanned from the Mica Bay Quadrangle Idaho, 7.5 minute series (Topographic) 1986 map. The numbers correspond to the site numbers in Table 3. Capital letters indicate species. Small case letters indicate life stage. See legend above.

Site No.	Site Name	Location	Type	Species Breeding	Remarks
34	Mica Bay	Mica Bay, Lake Coeur d' Alene.	bay		All RAPR were found in mowed grass along the edge of Mica bay. area is developed as a campground with boat docks.
35	Mica Bay Creek	Creek, bisecting BLM property.	stream		Adult AMMA was observed swimming aacross a one meter wide pool in "Mica Bay Creek".