

Chokecherry Canyon, Idaho

BLM Exclosure Area

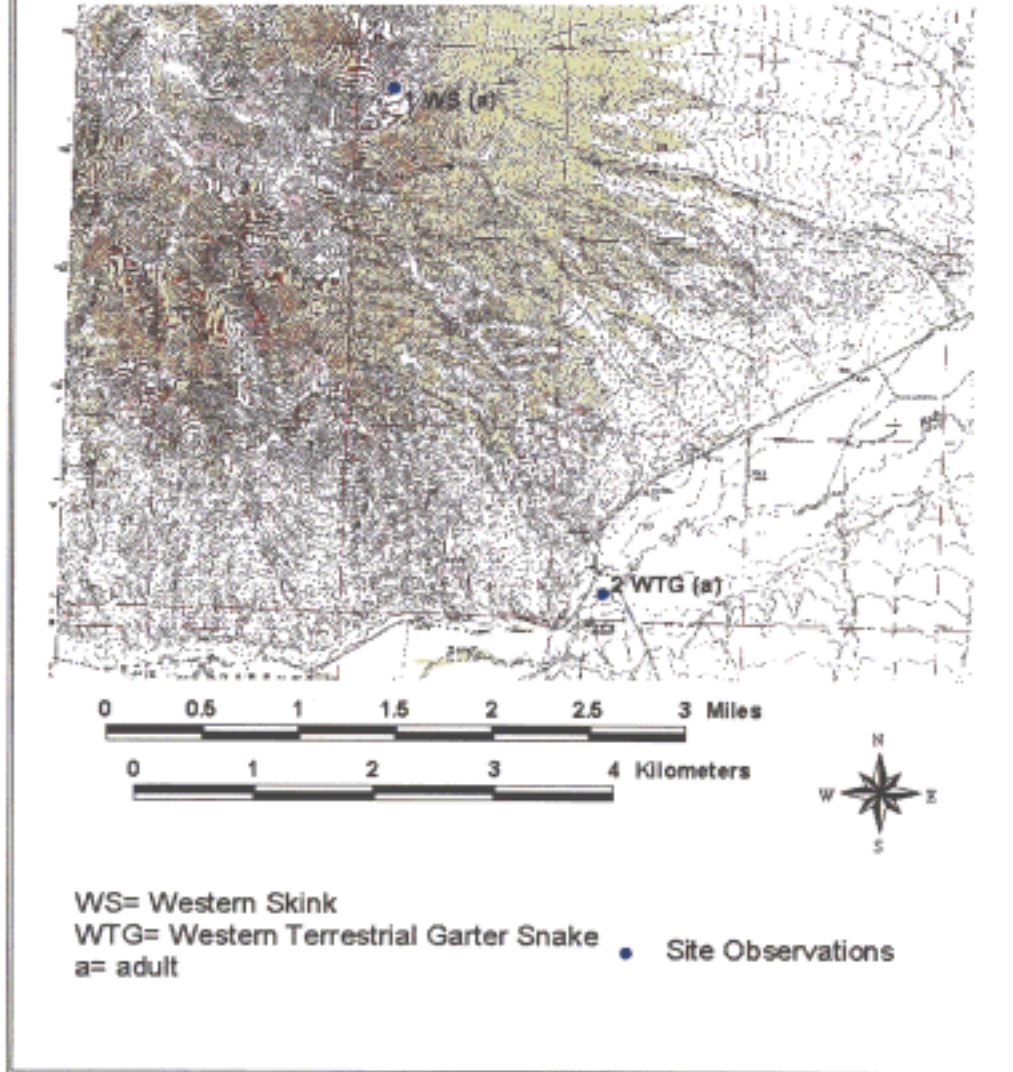


Figure 25. A portion of the Chokecherry Canyon Quadrangle, Idaho 7.5 minute series (Topographic) that shows the observed species and their distribution for this area. The labeling numbers refer to the number of individuals observed, the letters represent species identification codes, and the letters in parentheses identify the observed life stages.

Sublett Reservoir, Idaho

Sublett Reservoir Area

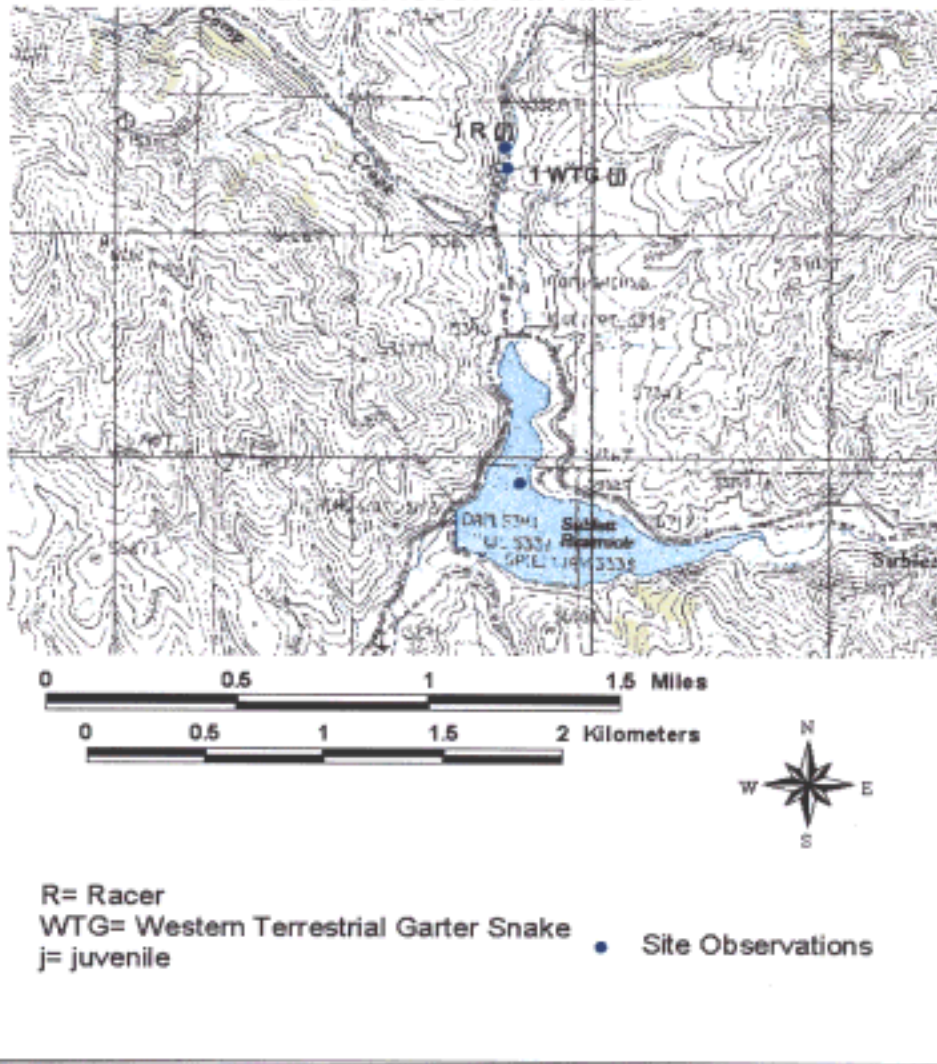
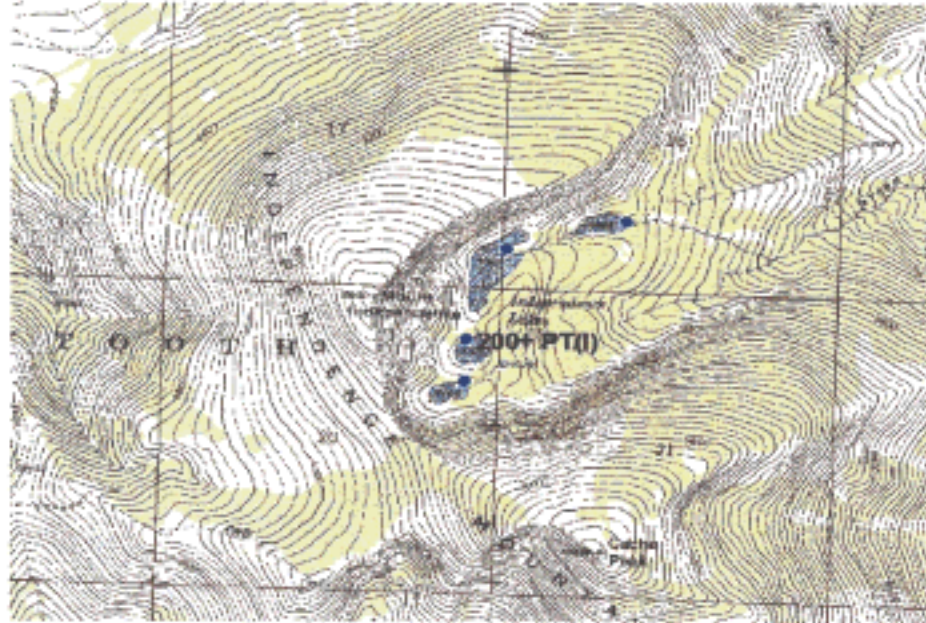


Figure 26. A portion of the Sublett Reservoir Quadrangle, Idaho 7.5 minute series (Topographic) that shows the observed species and their distribution for this area. The labeling numbers refer to the number of individuals observed, the letters represent species identification codes, and the letters in parentheses identify the observed life stages. The site with no corresponding observation label shows the location of the northern portion of Sublett Reservoir, and no species were detected at this site.

Cache Peak, Idaho

Independence Lakes Area



PT= Pacific Treefrog
I= larvae

• Site Observations

Figure 27. A portion of the Cache Peak Quadrangle, Idaho 7.5 minute series (Topographic) that shows the observed species and their distribution for this area. The labeling numbers refer to the number of individuals observed, the letters represent species identification codes, and the letters in parentheses identify the observed life stages. The sites with no corresponding observation labels show the location of the Independence Lakes where no species were detected.

Lake Walcott SE, Idaho

Bobcat Canyon Area

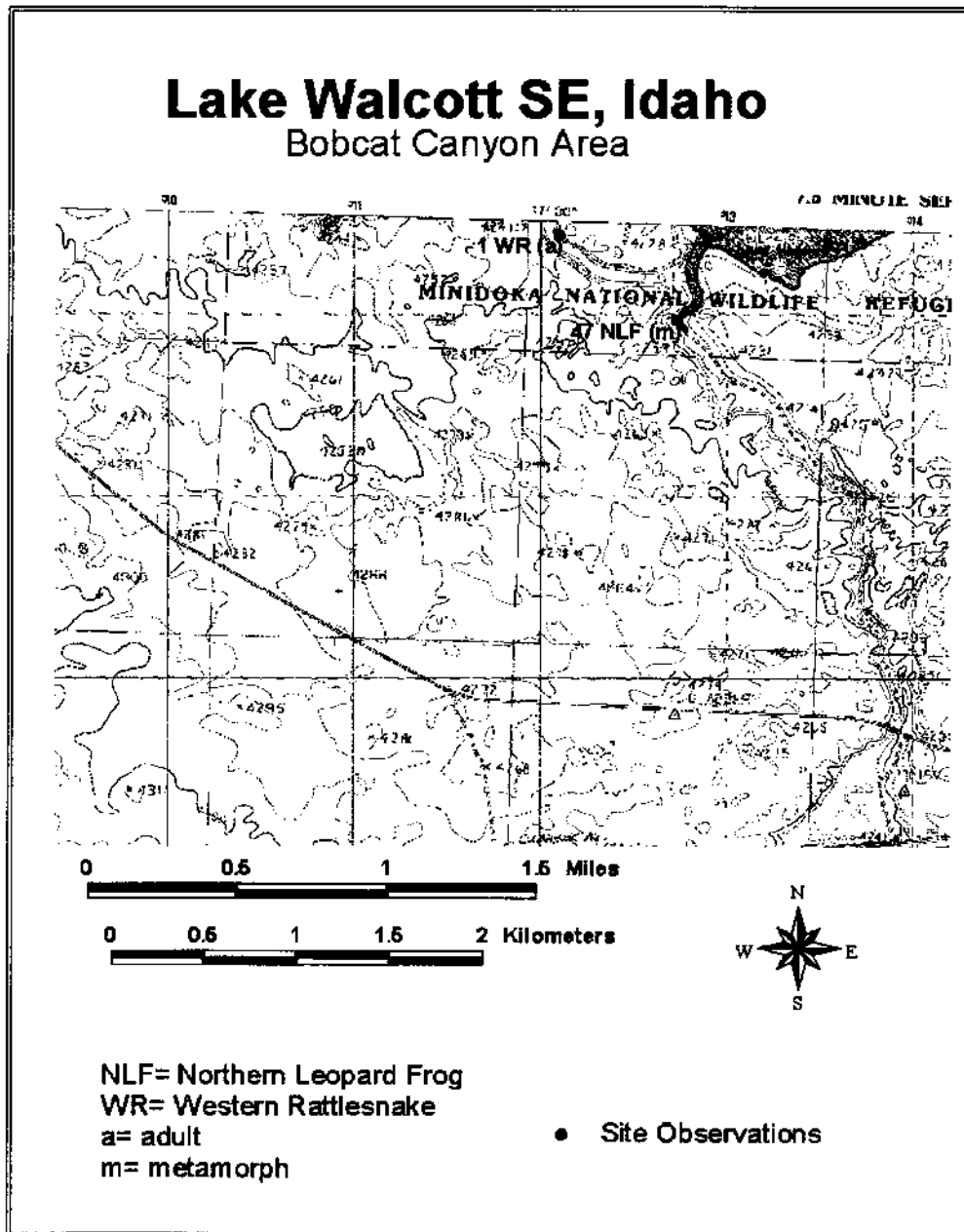


Figure 28. A portion of the Lake Walcott SE Quadrangle, Idaho 7.5 minute series (Topographic) that shows the observed species and their distribution for this area. The labeling numbers refer to the number of individuals observed, the letters represent species identification codes, and the letters in parentheses identify the observed life stages.

Lake Walcott West, Idaho

Southwest Coves Area

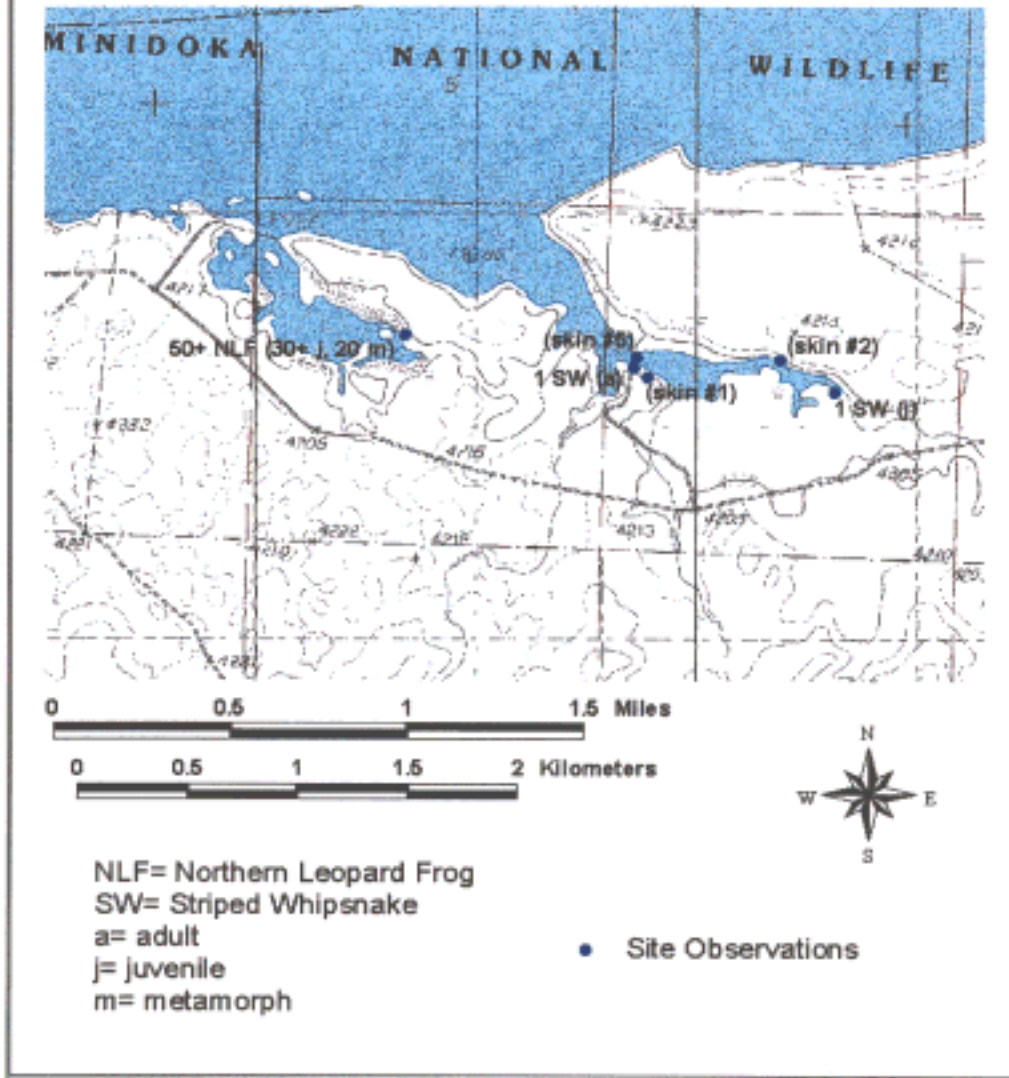


Figure 29. A portion of the Lake Walcott West Quadrangle, Idaho 7.5 minute series (Topographic) that shows the observed species and their distribution for this area. The labeling numbers refer to the number of individuals observed, the letters represent species identification codes, and the letters in parentheses identify the observed life stages. Snake skin #5 was identified as *Thamnophis*, but the species could not be determined. Snake skins #1 and #2 could not accurately be identified.

Lake Walcott West, Idaho Wildlife Refuge Area

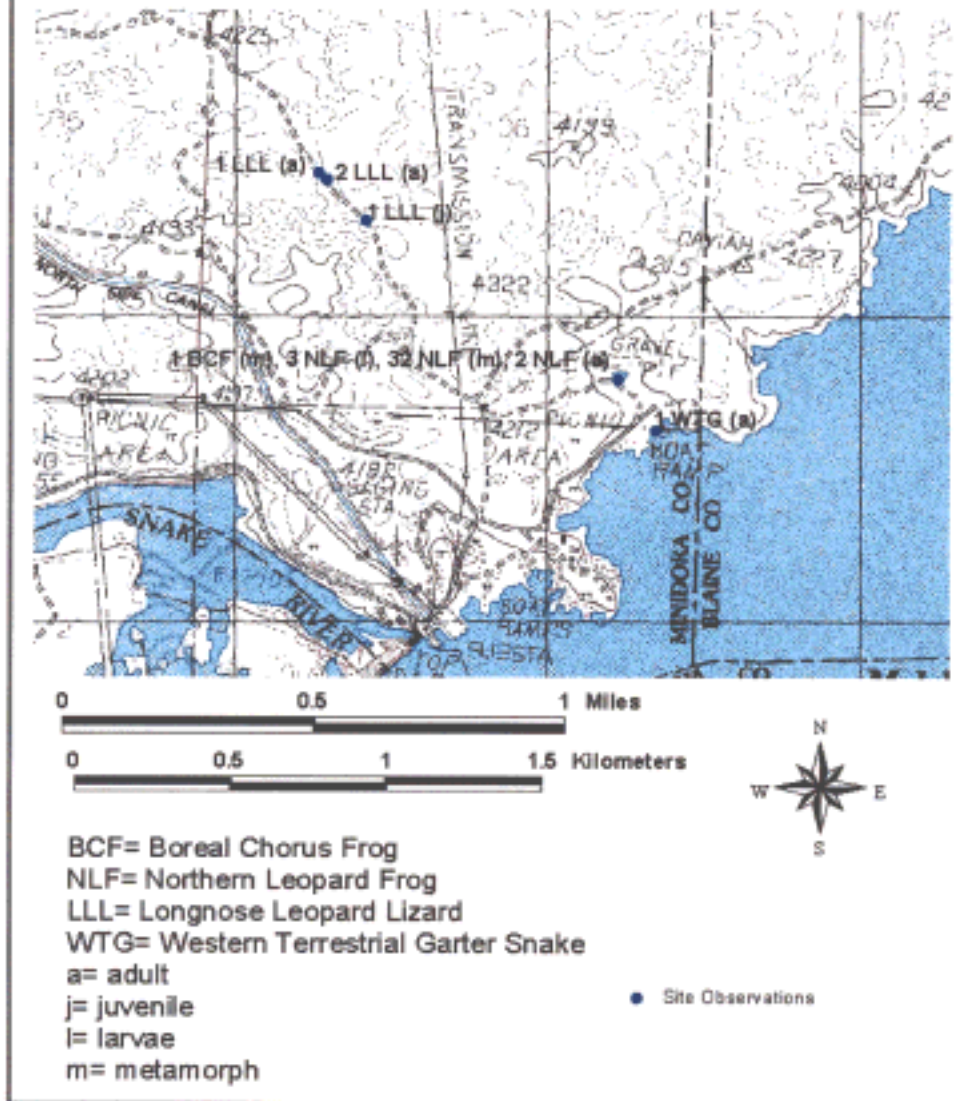


Figure 30. A portion of the Lake Walcott West Quadrangle, Idaho 7.5 minute series (Topographic) that shows the observed species and their distribution for this area. The labeling numbers refer to the number of individuals observed, the letters represent species identification codes, and the letters in parentheses identify the observed life stages.

Appendix A. Survey site photographs taken during the study.



This site is located in Big Cottonwood Canyon, and is generally characterized by rocky hillsides and talus slopes with intermixed juniper and sagebrush. The photograph was taken looking west. A single adult Western Fence Lizard was observed at this site.



This site is located near Bosteter Road east of Big Cottonwood Canyon and is characterized by exposed rocky wash with a riparian area located just east of this view. The photograph was taken looking north. There were no species found at this site.



This site is an emergent wetland that lies in about the middle of this photograph and is located in Big Cottonwood Canyon up and behind one of the ridges to the east. The photograph was taken looking west and characterizes typical upland habitat in Big Cottonwood Canyon. Eighteen Pacific Treefrog larvae, one juvenile and two adult Racers, and two juvenile Western Terrestrial Garter Snakes were detected at this site.



This site is located in Cave Canyon and is primarily characterized by talus slopes with a riparian area and small stream located approximately 20 meters to the south. This photograph was taken looking northwest. Two Western Fence Lizards, one adult and one juvenile, were observed at this site and a dead Racer was found on the access trail nearby.



This site is riparian habitat located in Big Cedar Canyon. This photograph was taken looking northeast. Two Western Fence Lizards, one juvenile and one adult, and one adult Western Terrestrial Garter Snake were observed at this site.