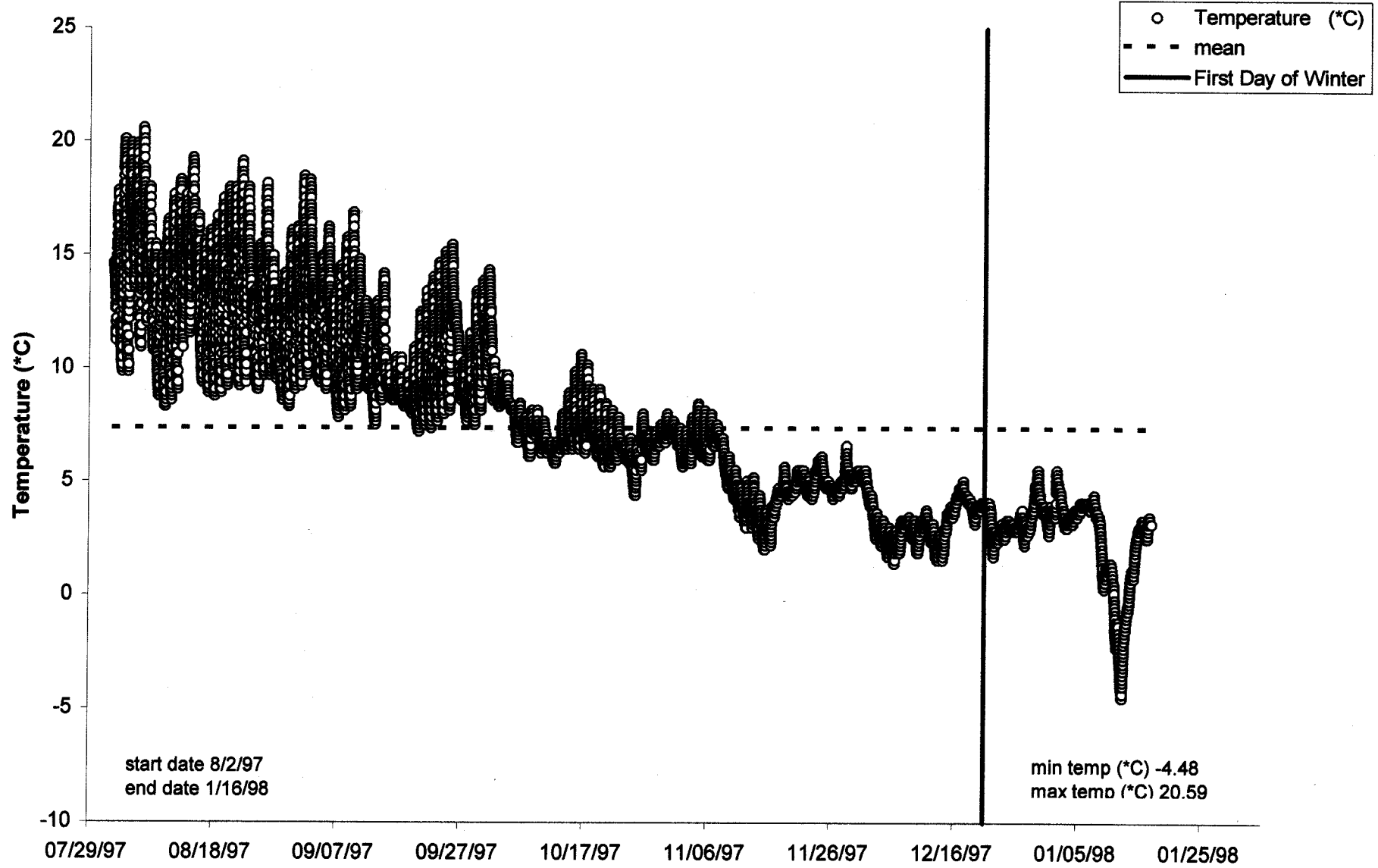


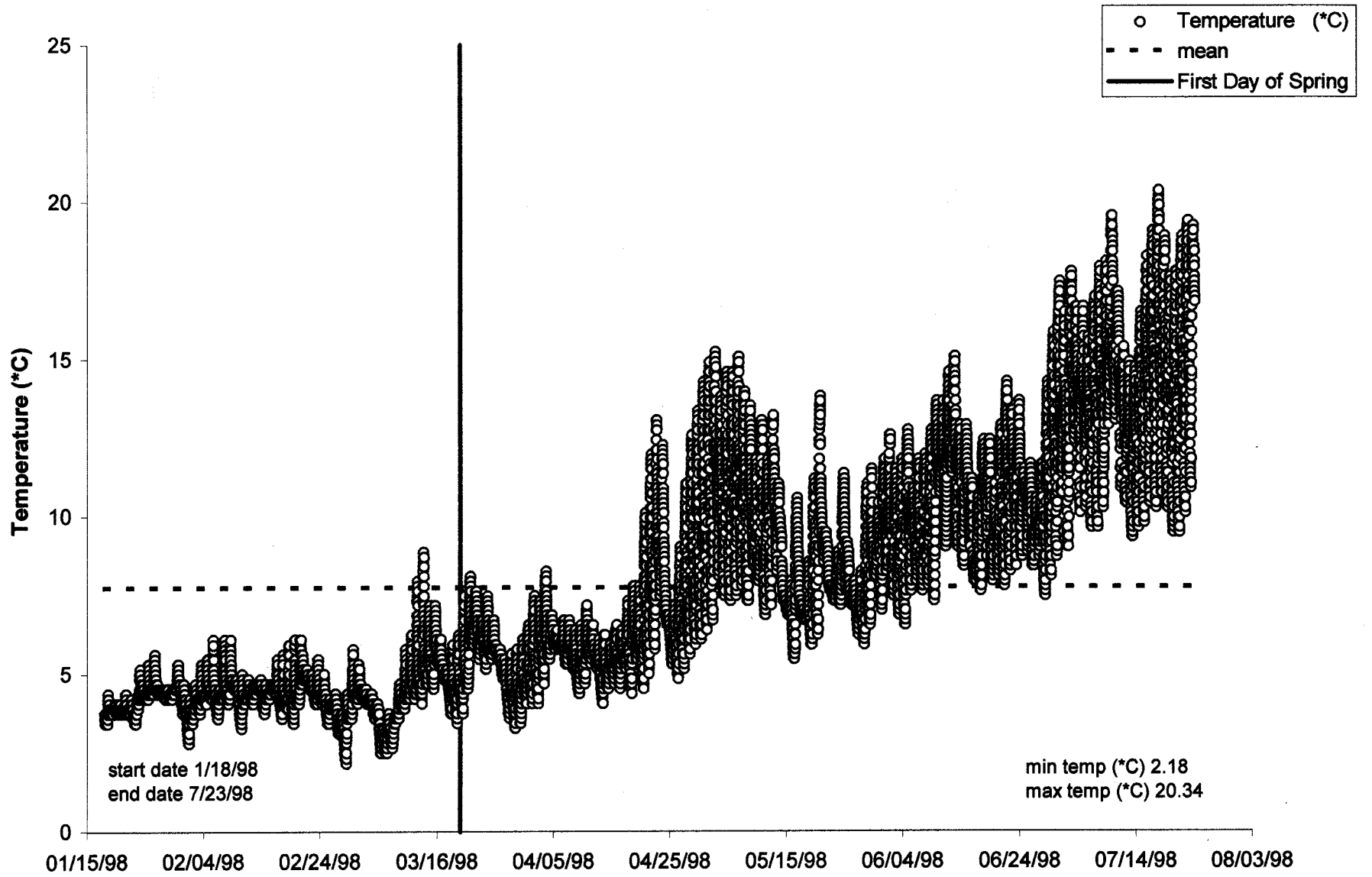
Appendix C - Fig. 11



International #3 (August-January, 1997-98)

S/N 103440

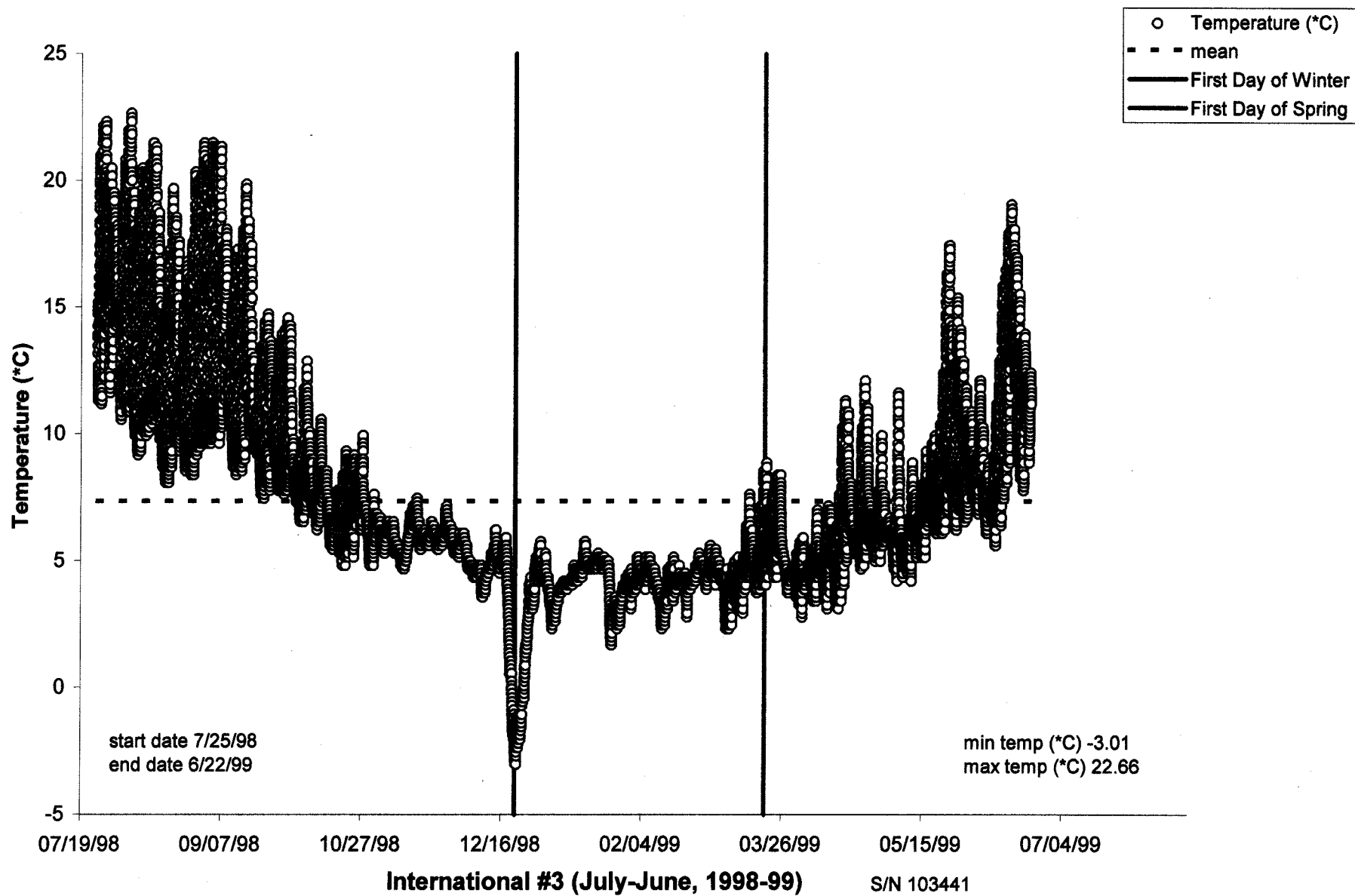
Appendix C - Fig. 12



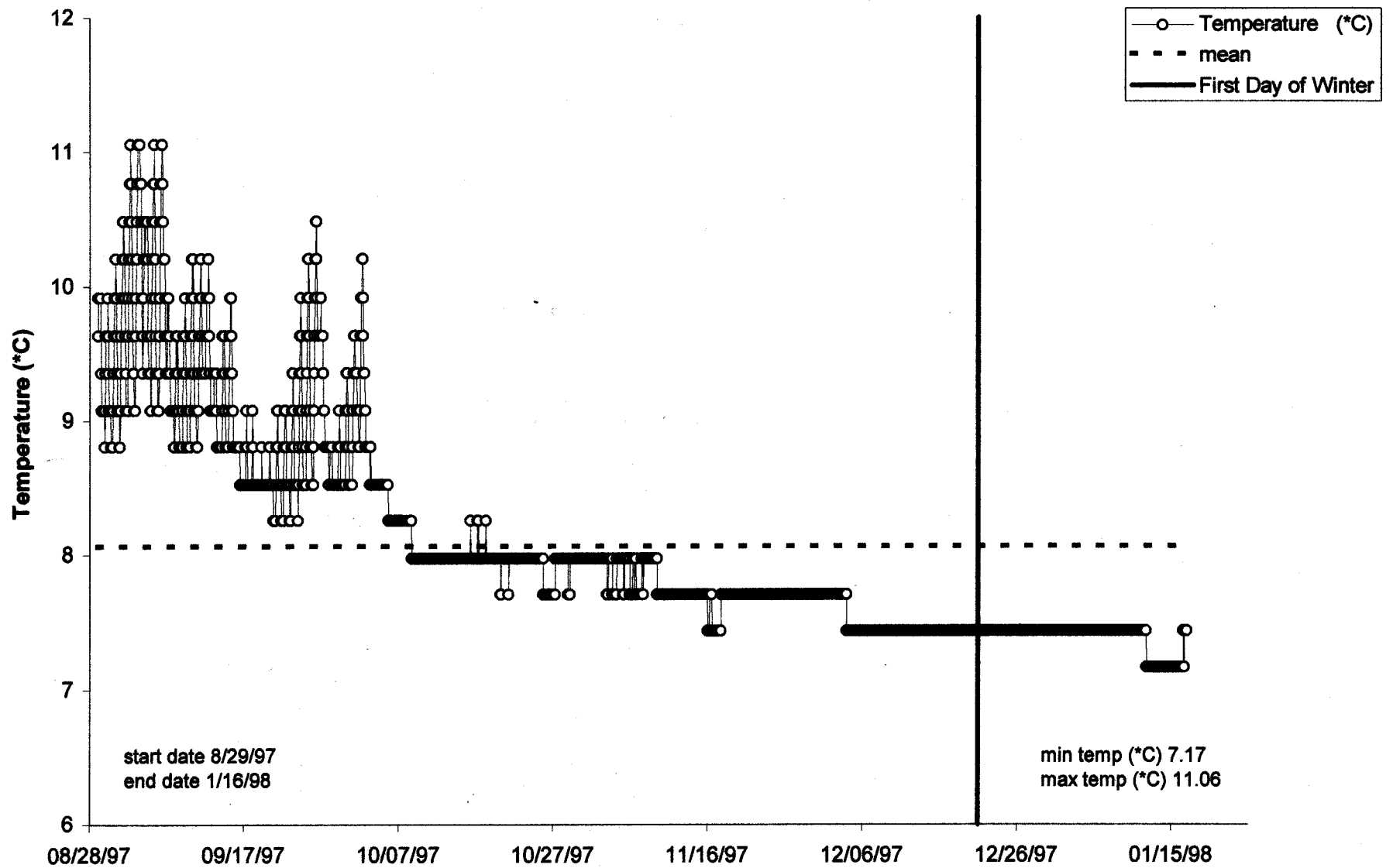
International #3 (January-July, 1998)

S/N 103461

Appendix C - Fig. 13



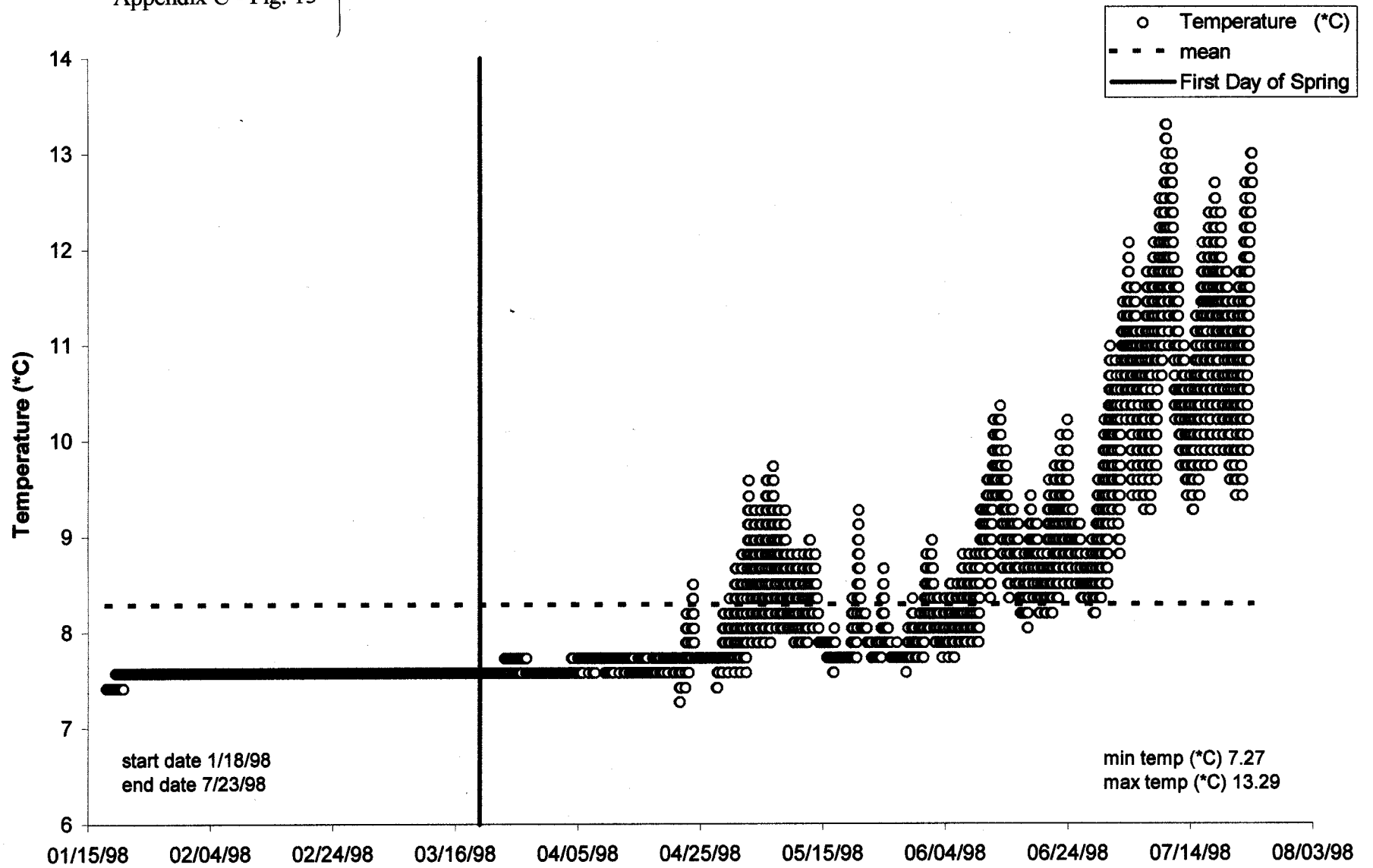
Appendix C - Fig. 14



International #4 (August-January, 1997-98)

S/N 86760

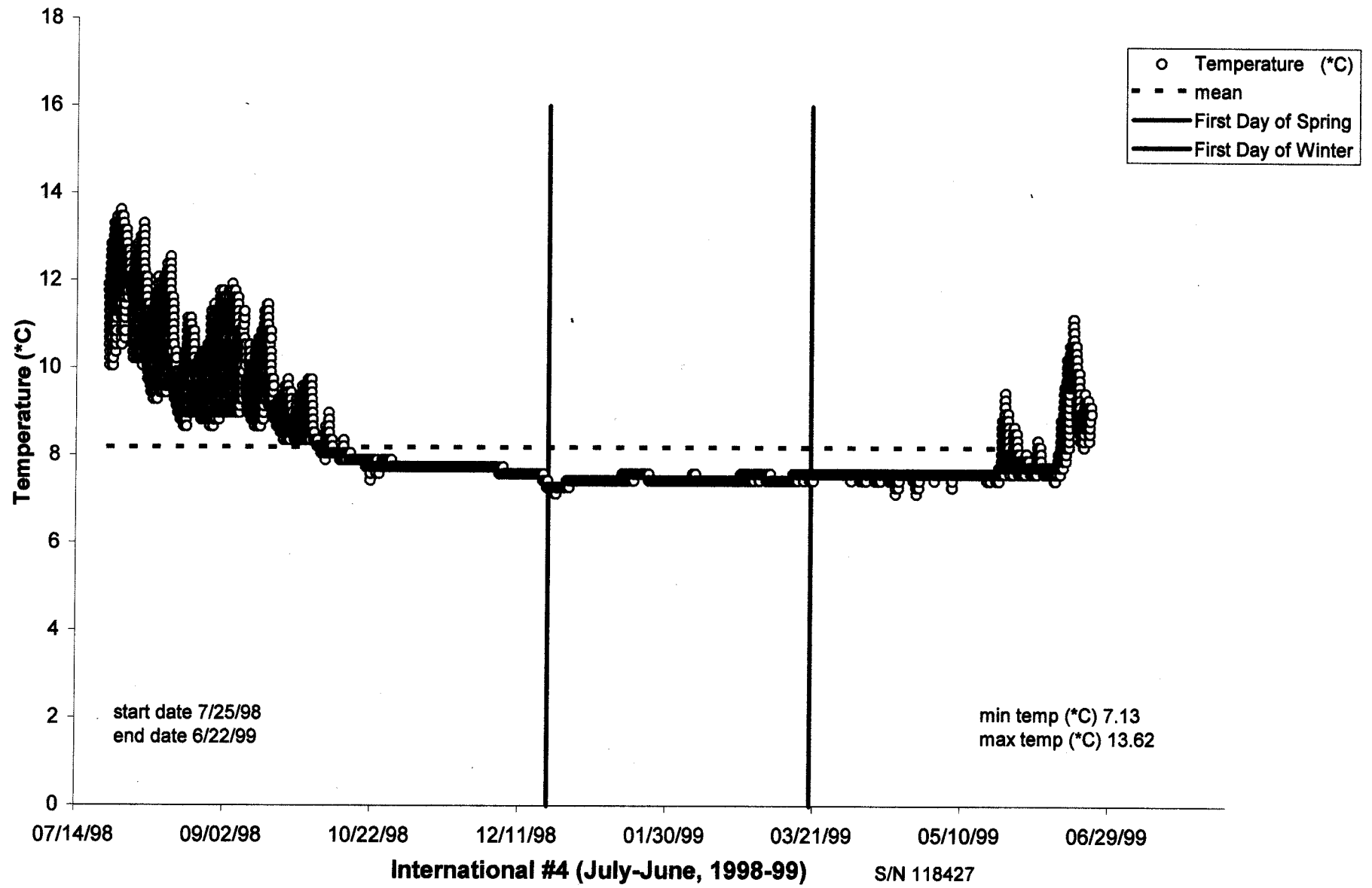
Appendix C - Fig. 15



International #4 (January-July, 1998)

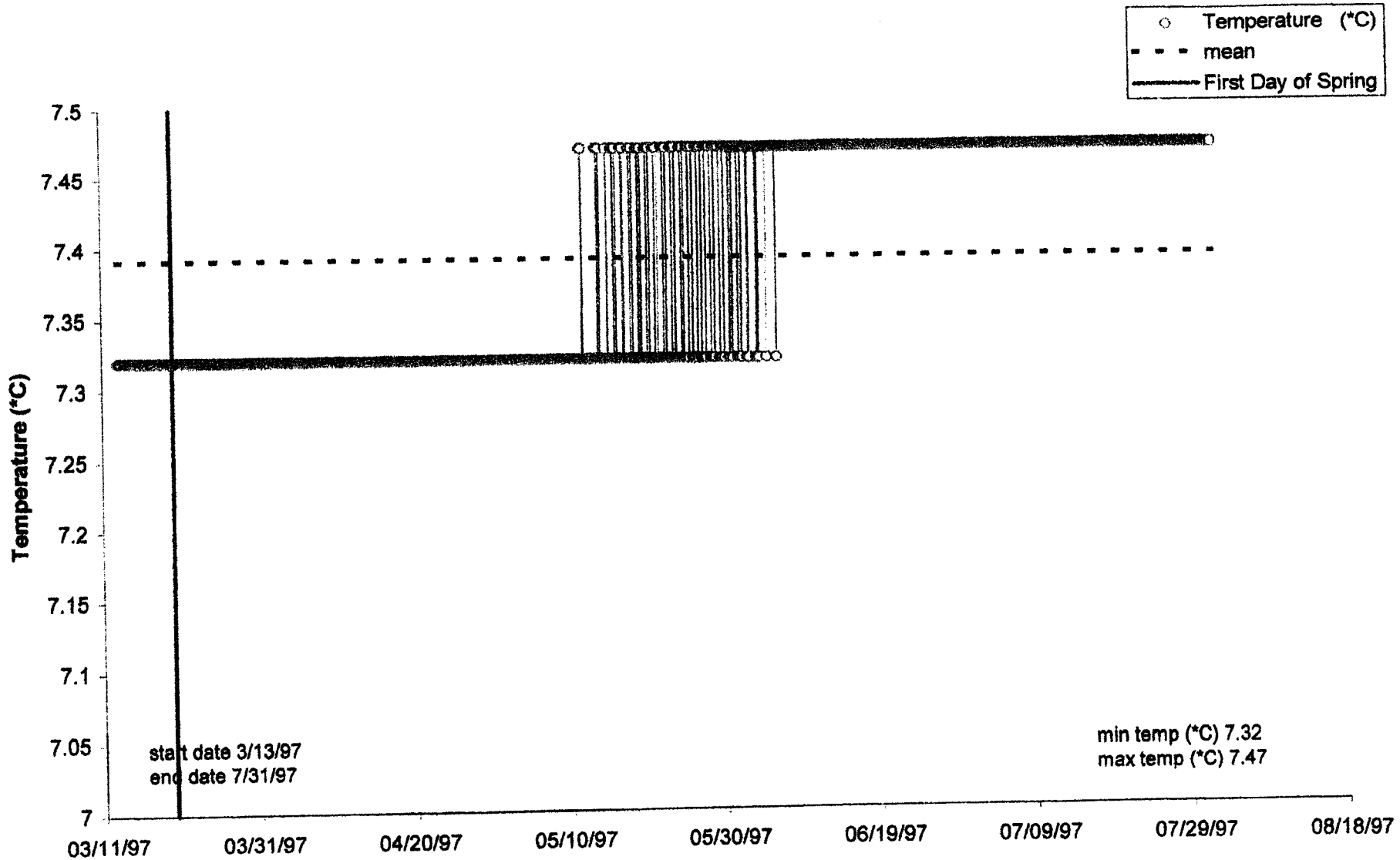
S/N 109760

Appendix C - Fig. 16

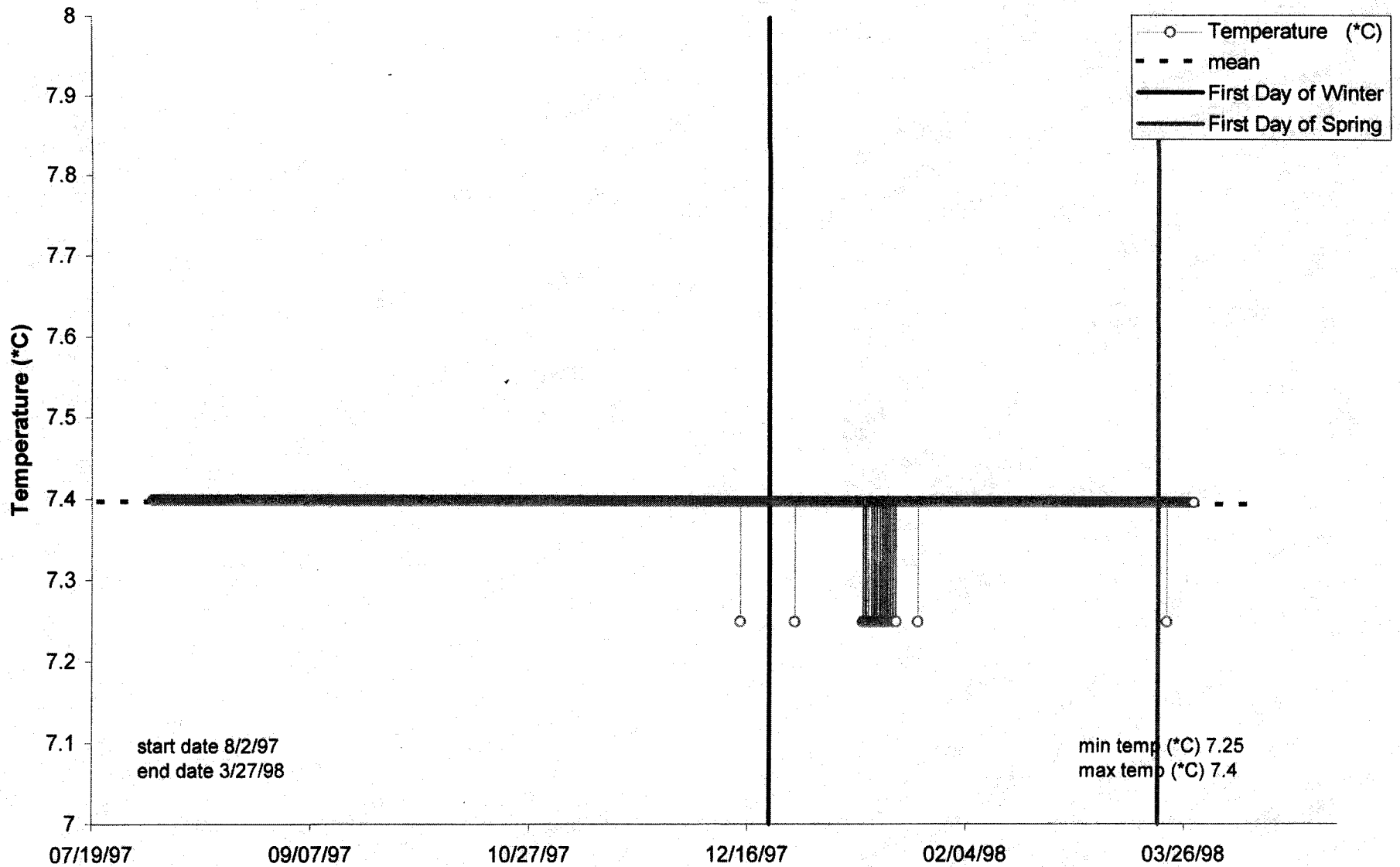




Appendix C - Fig. 18



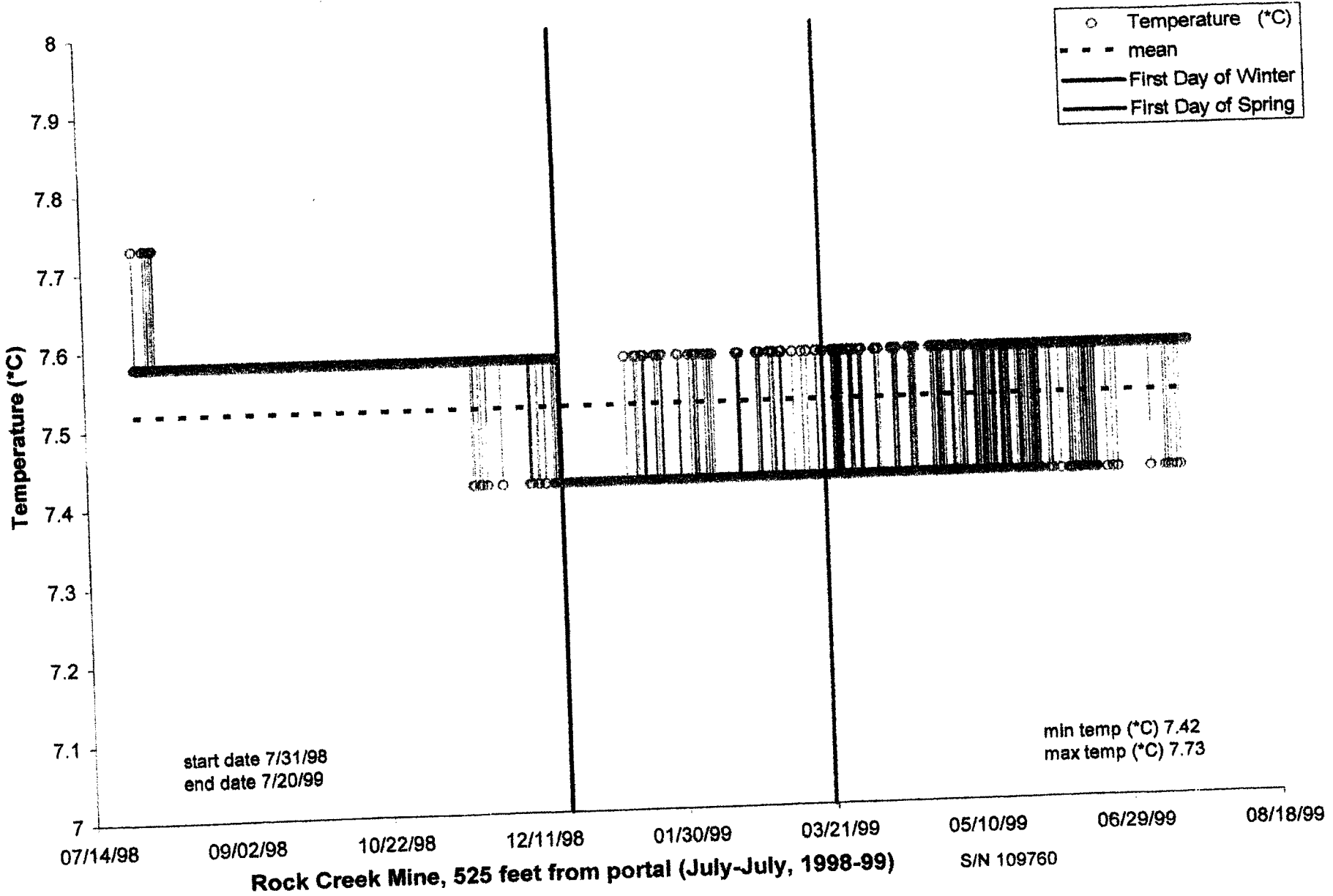
Appendix C - Fig. 19



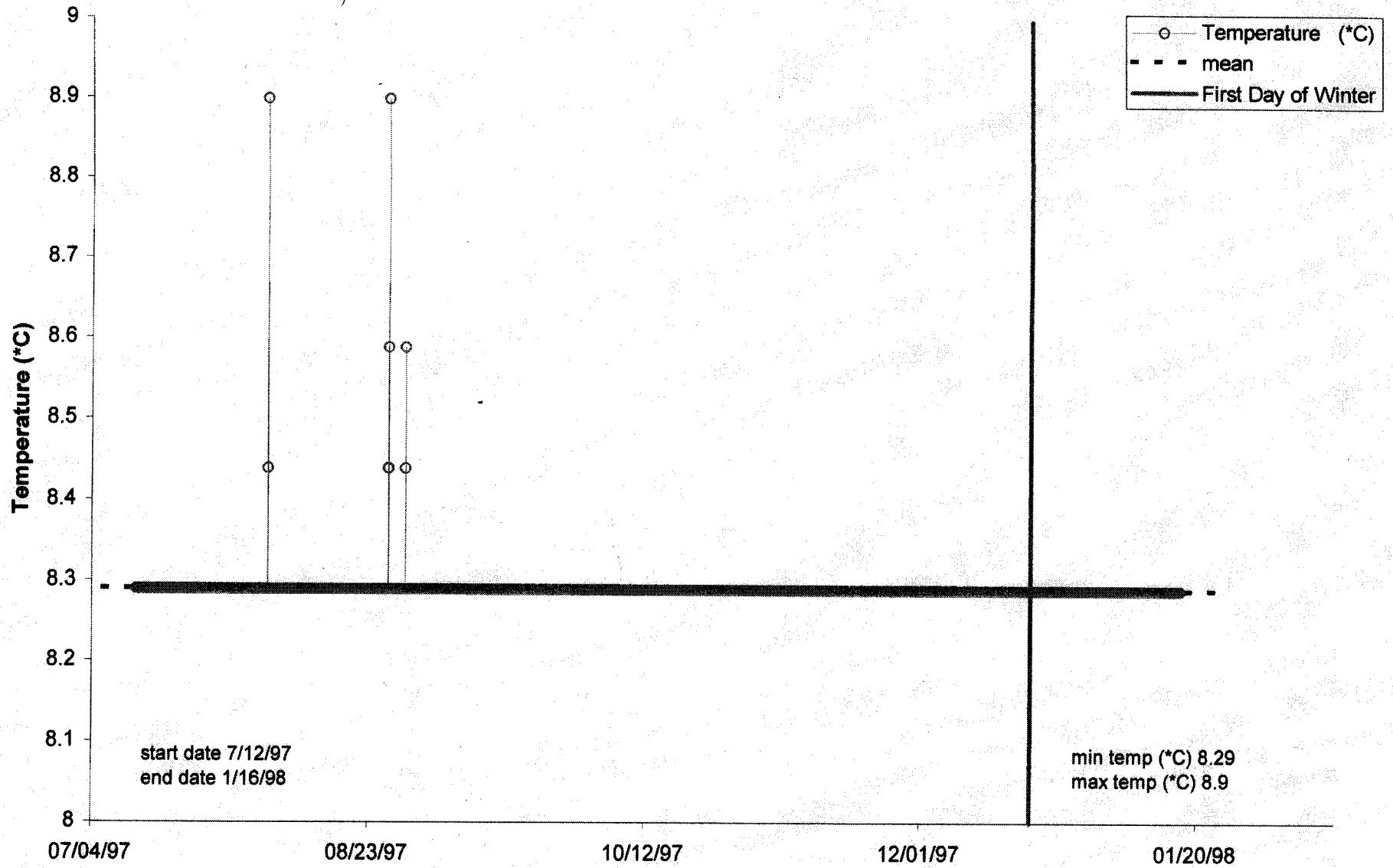
Rock Creek, 525 feet from portal (August-March, 1997-98)

S/N 103436

Appendix C - Fig. 20



Appendix C - Fig. 21



Big It Mine (July-January, 1997-98)

S/N 109820

Appendix C - Fig. 22

