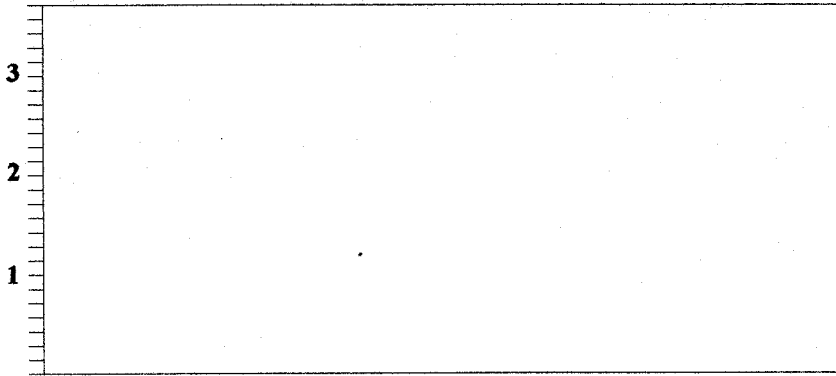
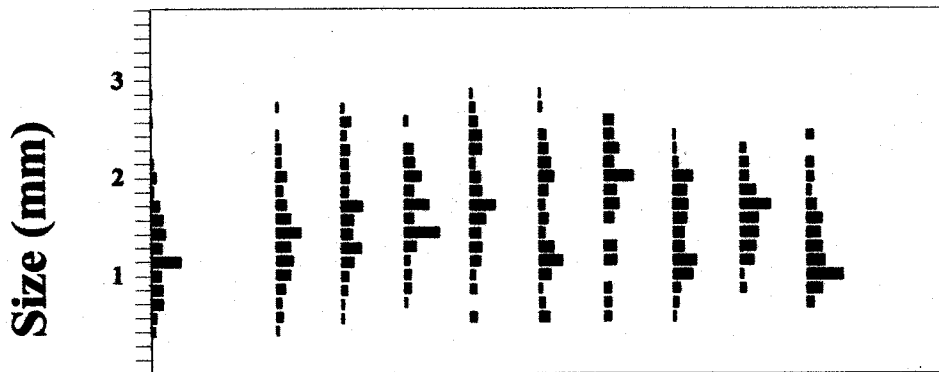


Figure 3h. Size histograms for the Bruneau Springsnail study sites. Horizontal tick marks represent 0.14mm size classes. Solid bars represent relative abundance of snails for a particular size class (n=100 for Site 2; n=50 for Site 3).

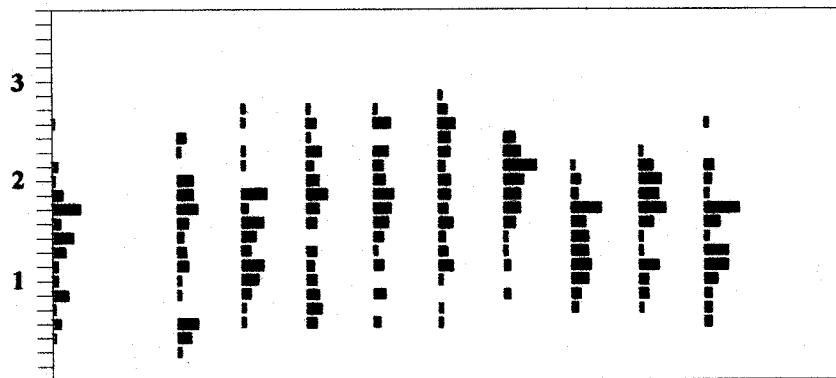
Site 1



Site 2



Site 3



1998 J F M A M J J A S O N D 1998

Month
— = 25 %

Figure 3i. Size histograms for the Bruneau Springsnail study sites. Horizontal tick marks represent 0.14mm size classes. Solid bars represent relative abundance of snails for a particular size class (n=100 for Site 2; n=50 for Site 3).

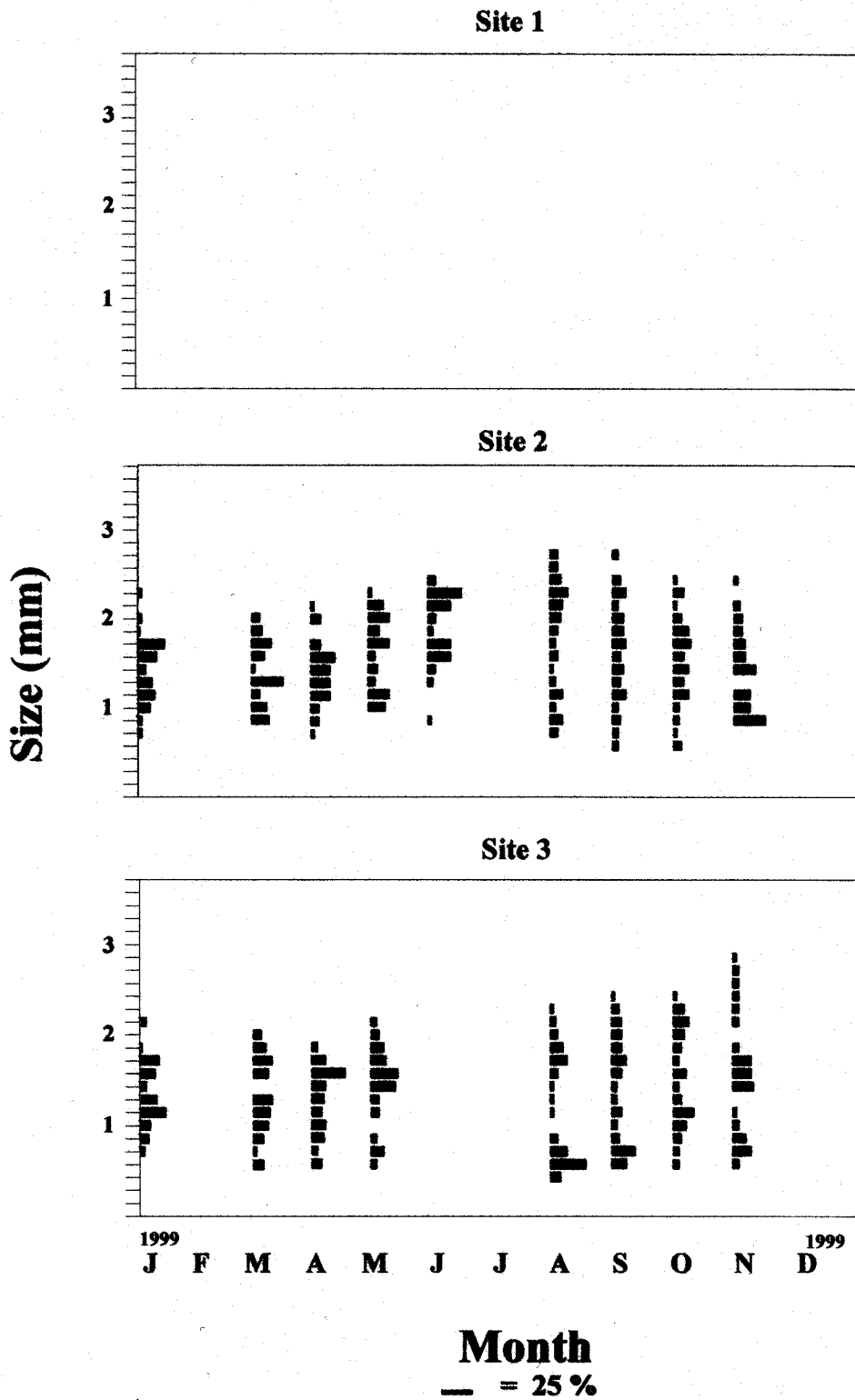
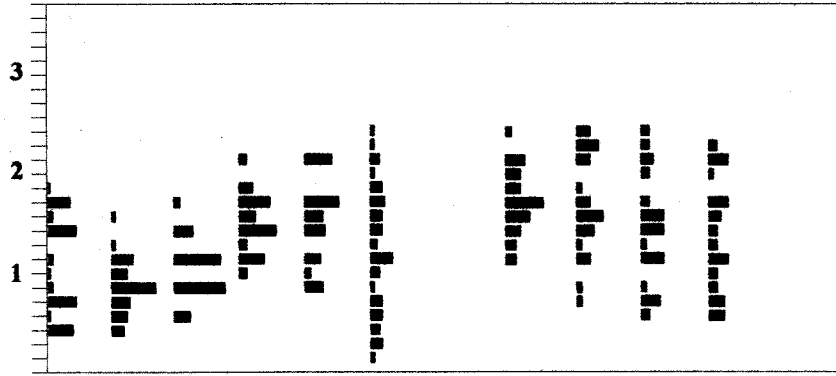
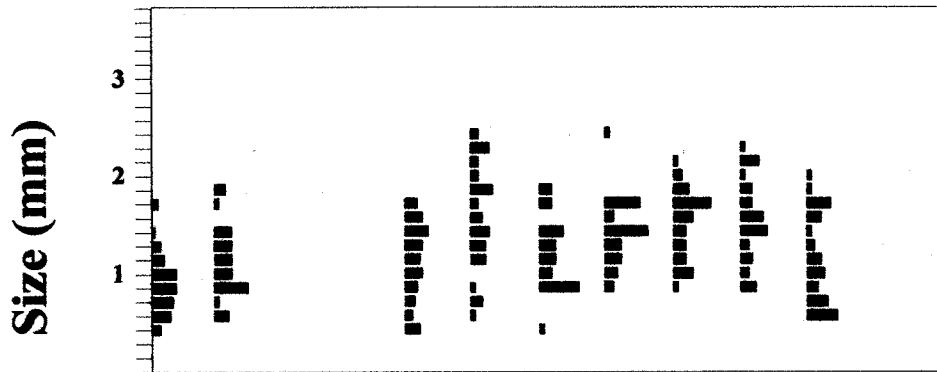


Figure 3j. Size histograms for the Bruneau Springsnail study sites. Horizontal tick marks represent 0.14mm size classes. Solid bars represent relative abundance of snails for a particular size class (n=100 for Site 2; n=50 for Site 3).

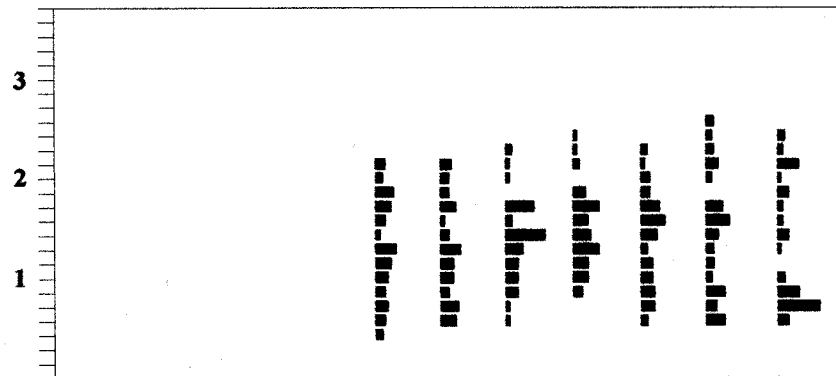
Site 3 New Seep
1994



1995



1996



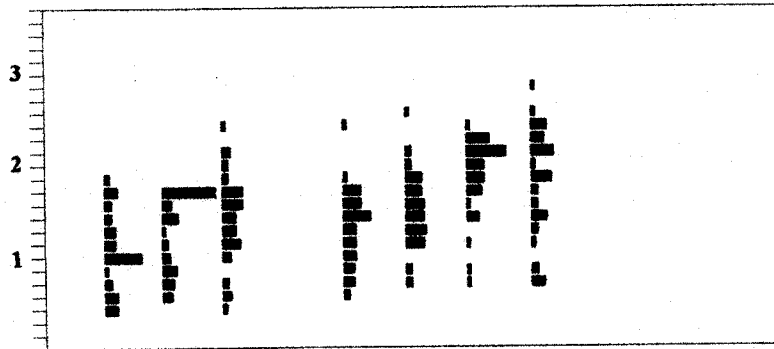
J F M A M J J A S O N D

Month
— = 25 %

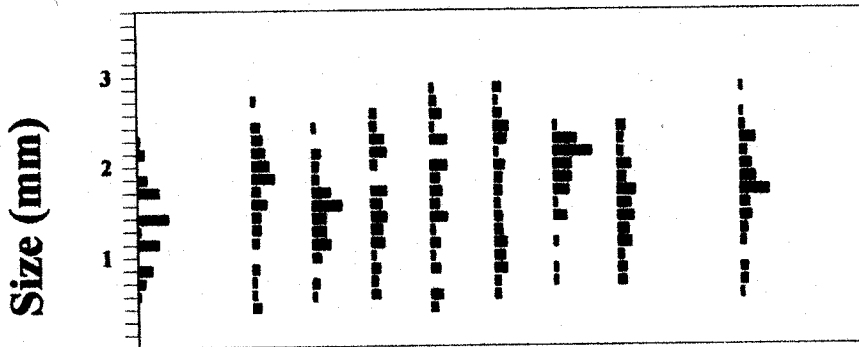
Figure 4a. Size histograms for the Bruneau Springsnail study site 3 New Seep. Horizontal tick marks represent 0.14 mm size classes. Solid bars represent relative abundance of snails for a particular size class (n=50 for each sample).

Site 3 New Seep

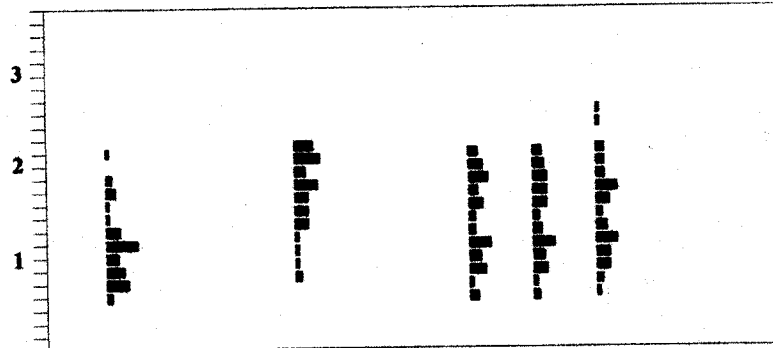
1997



1998



1999



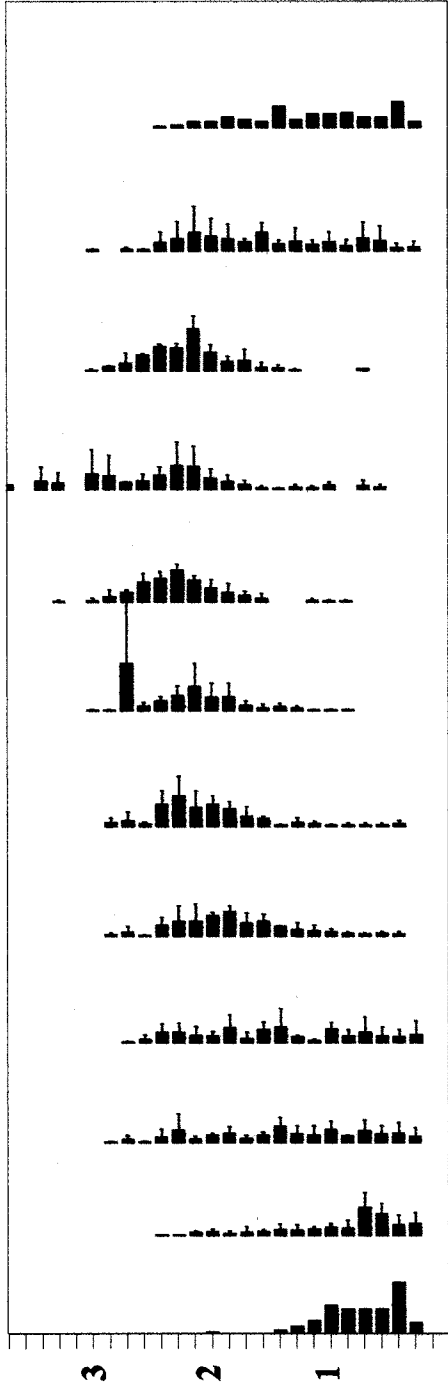
J F M A M J J A S O N D

Month

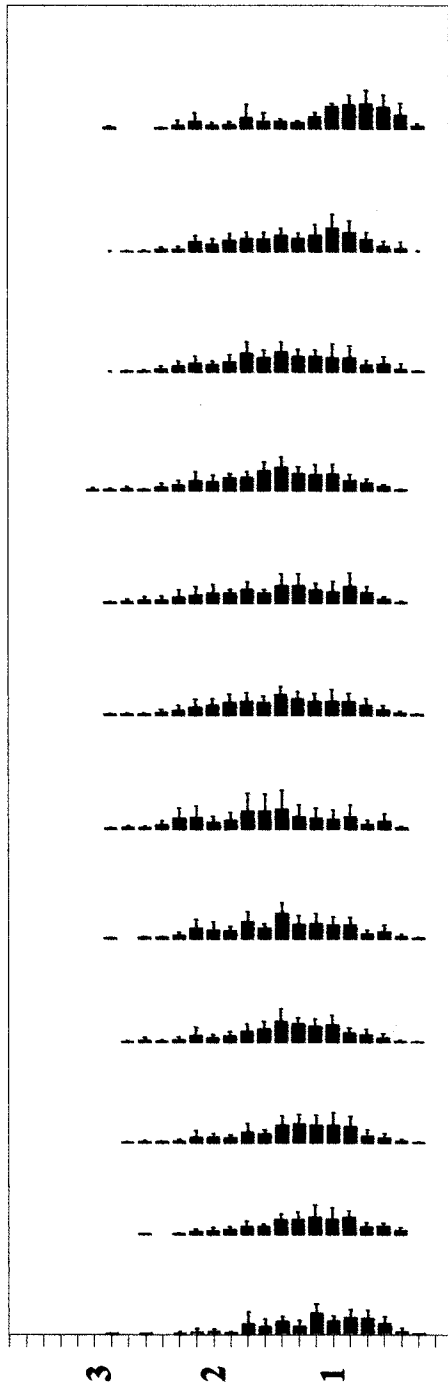
— = 25 %

Figure 4b. Size histograms for the Bruneau Springsnail study sites 3 New Seep. Horizontal tick marks represent 0.14 mm size classes. Solid bars represent relative abundance of snails for a particular size class (n=50 for each sample).

Site 1



Site 2

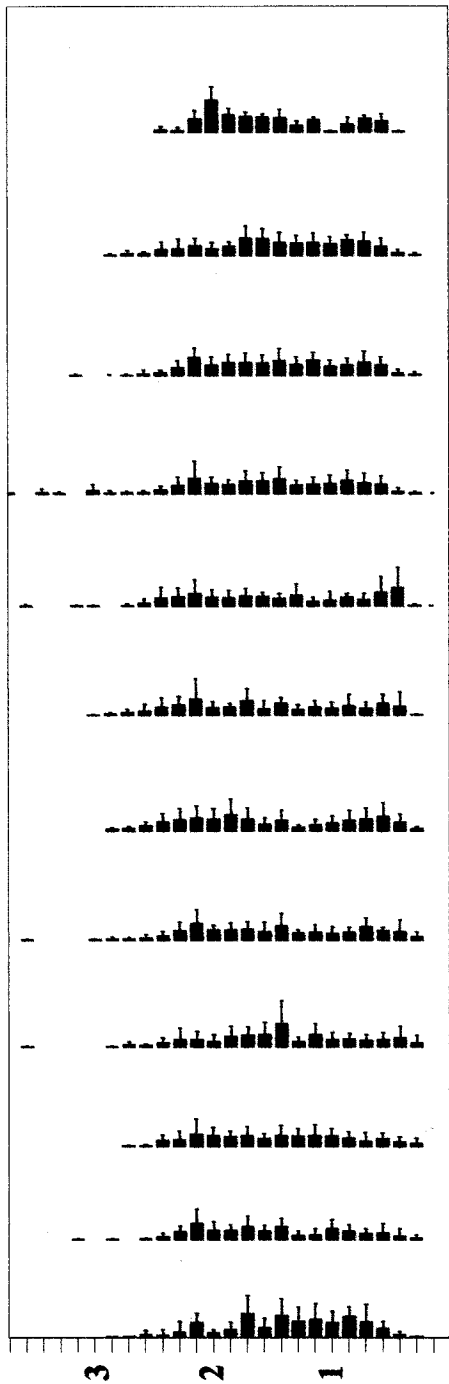


J F M A M J J A S O N D

Month
— = 25 snails

Figure 5a. Size histograms for Bruneau Springsnail study sites 1 and 2 based upon data from 1990-1999. Horizontal tick marks represent 0.14 mm size classes. Error bars represent one standard deviation from the mean. Figures lacking error bars did not have enough sets of data to determine standard deviations.

Site 3



Size (mm)

Site 3 New Seep

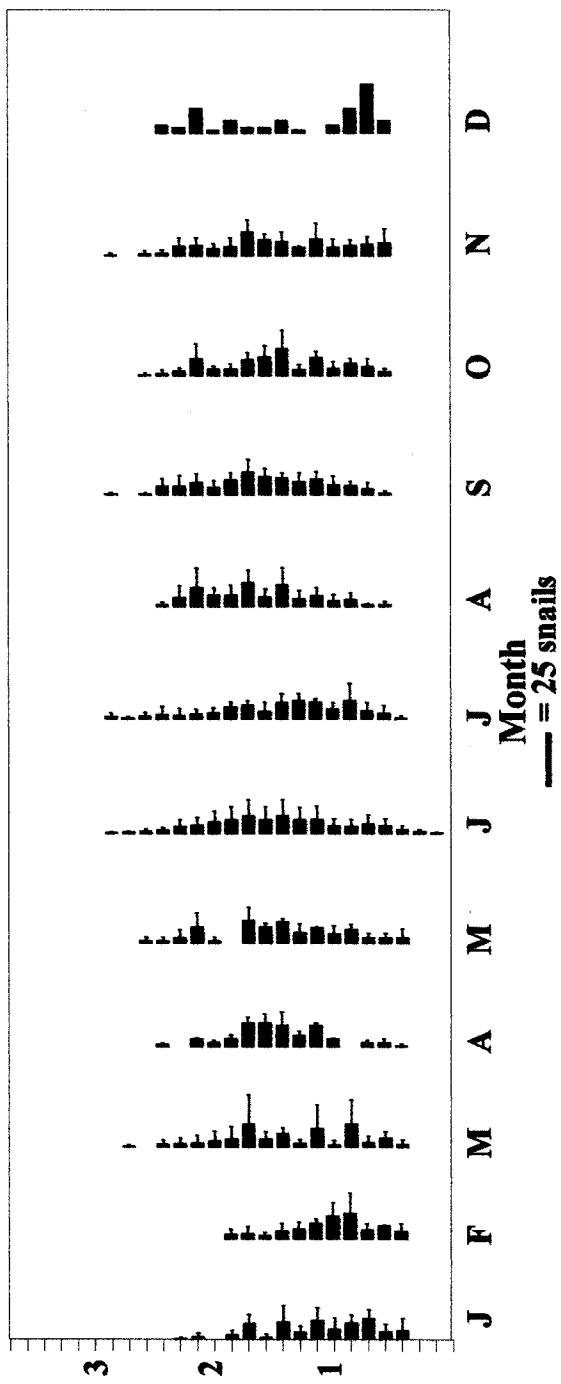


Figure 5b. Size histograms for Bruneau Springsnail study sites 3 and 3 New Seep based upon data from 1990-1999. Horizontal tick marks represent 0.14-mm size classes. Error bars represent one standard deviation from the mean. Figures lacking error bars did not have enough sets of data to determine standard deviations.

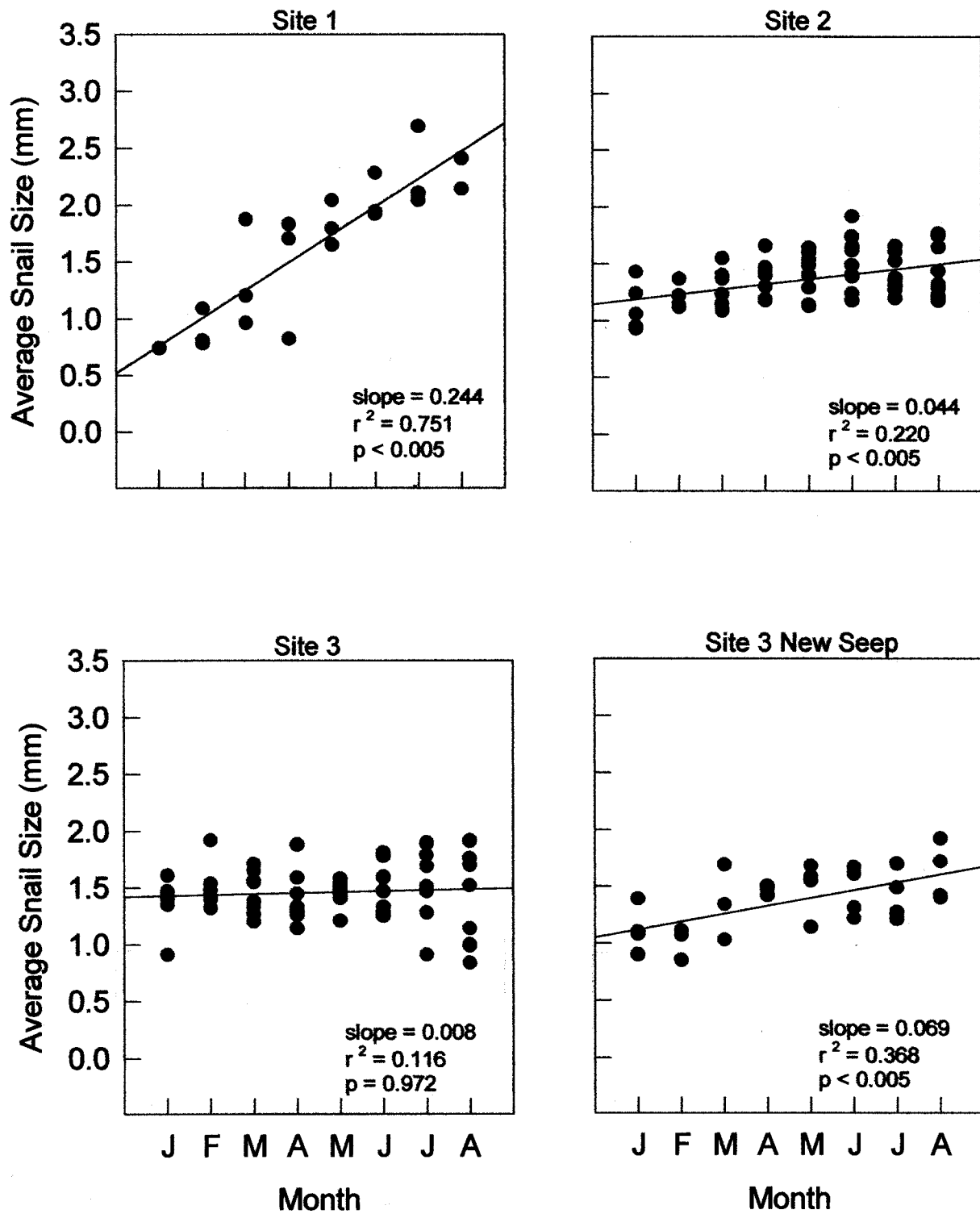


Figure 6. Estimated Springsnail growth rates based upon average monthly size (mm) at study sites 1, 2, 3-OS, and 3-NS. See text for explanation of months chosen for analyses. Years included in the analyses were 1990 - 1992 (Site 1), 1990 - 1999 (Sites 2 and 3-OS), and 1994 - 1999 (Site 3-NS).

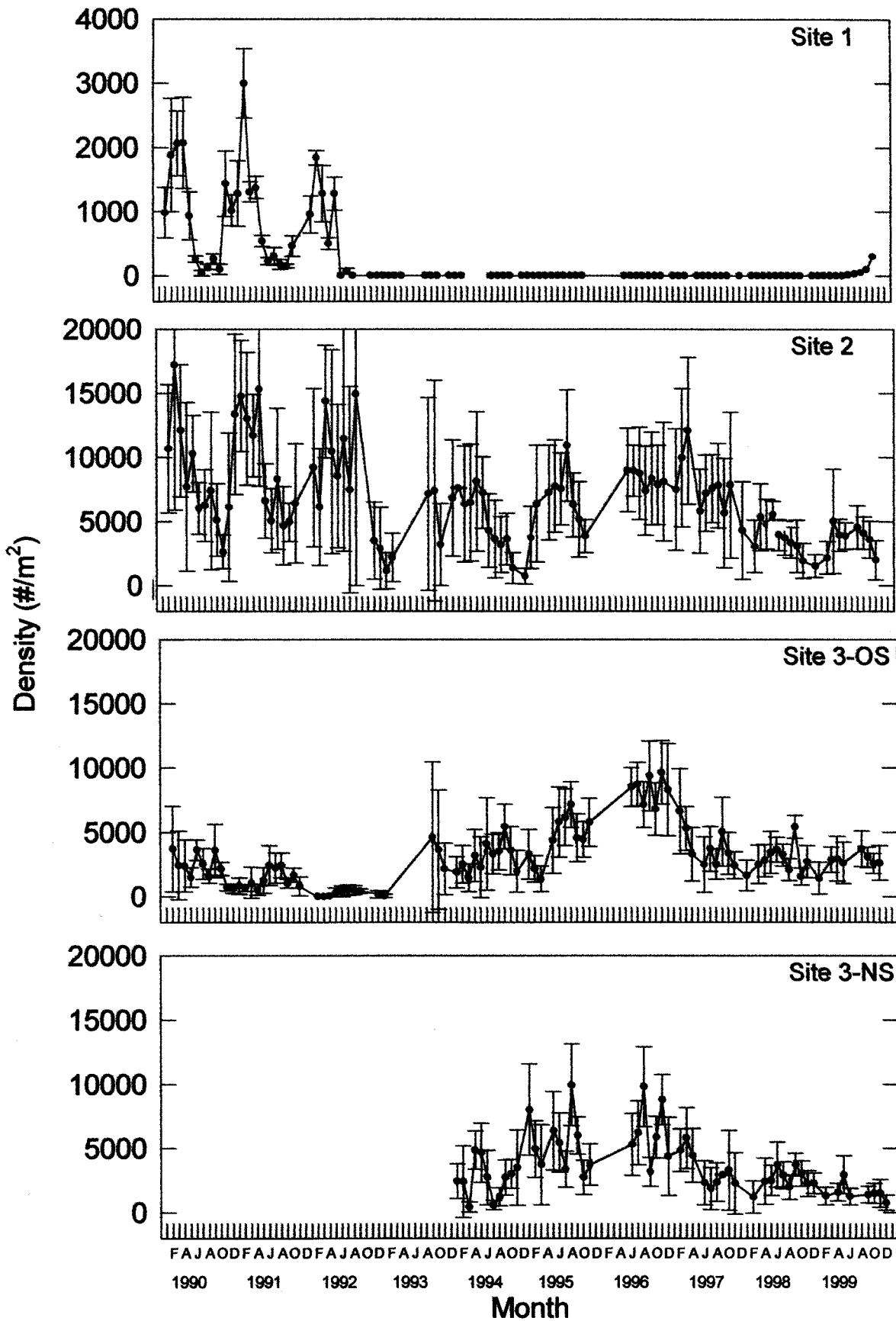


Figure 7. Mean density of the Bruneau Springsnail at the four study sites. Error bars represent one standard deviation from the mean. Note the different Y-axis for Site 1.