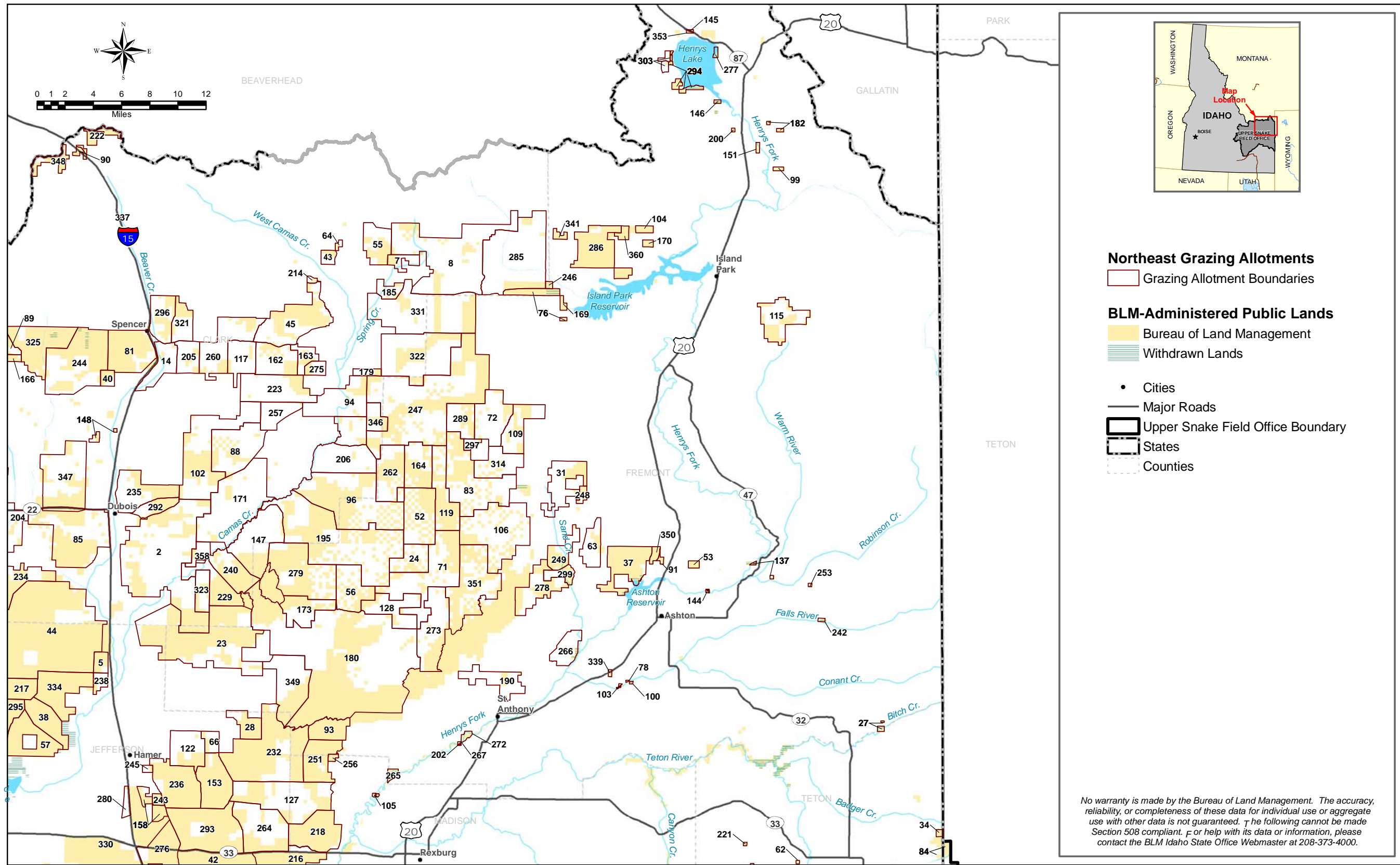
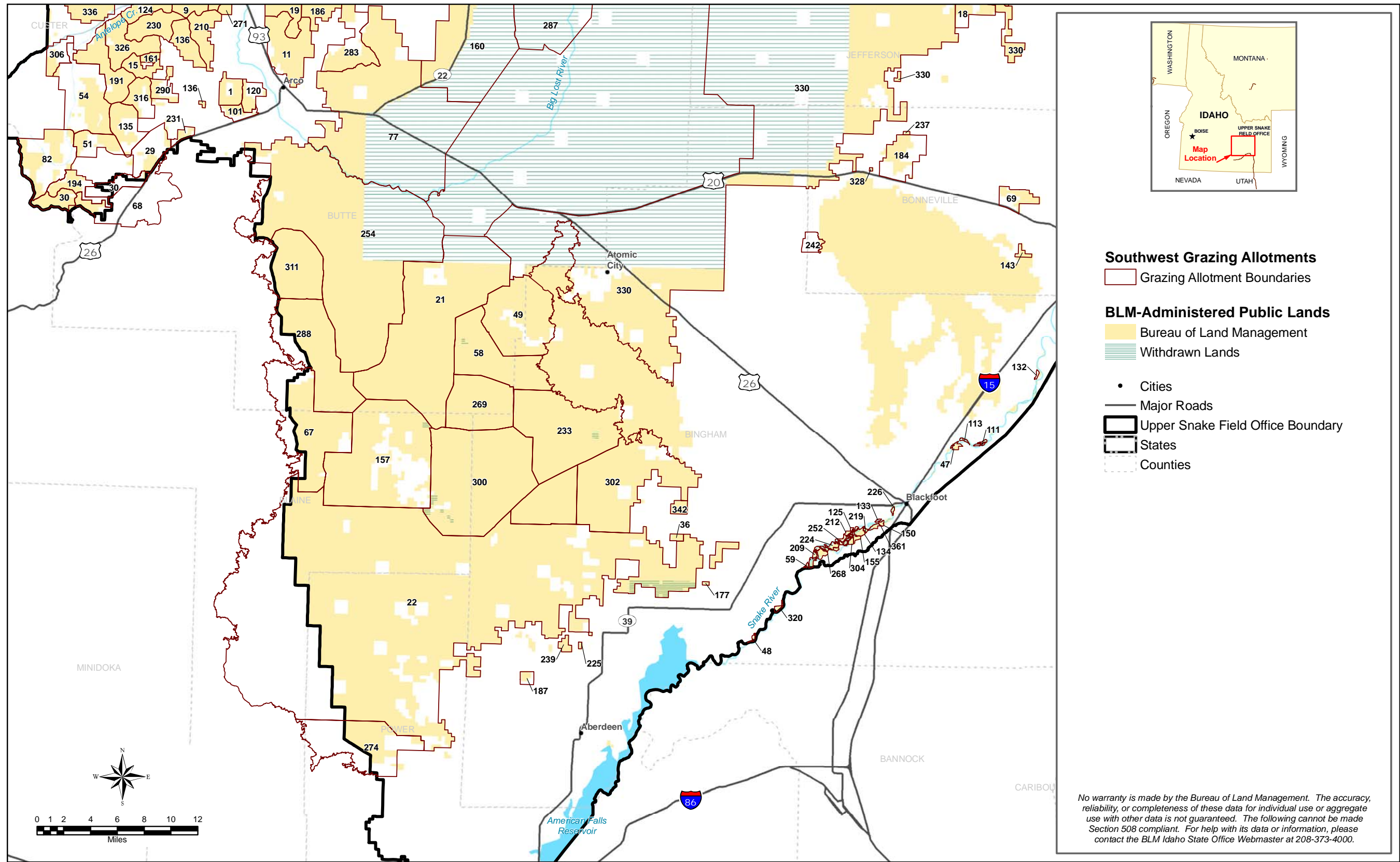


A-17. Commercial timber found within the Upper Snake Field Office area.

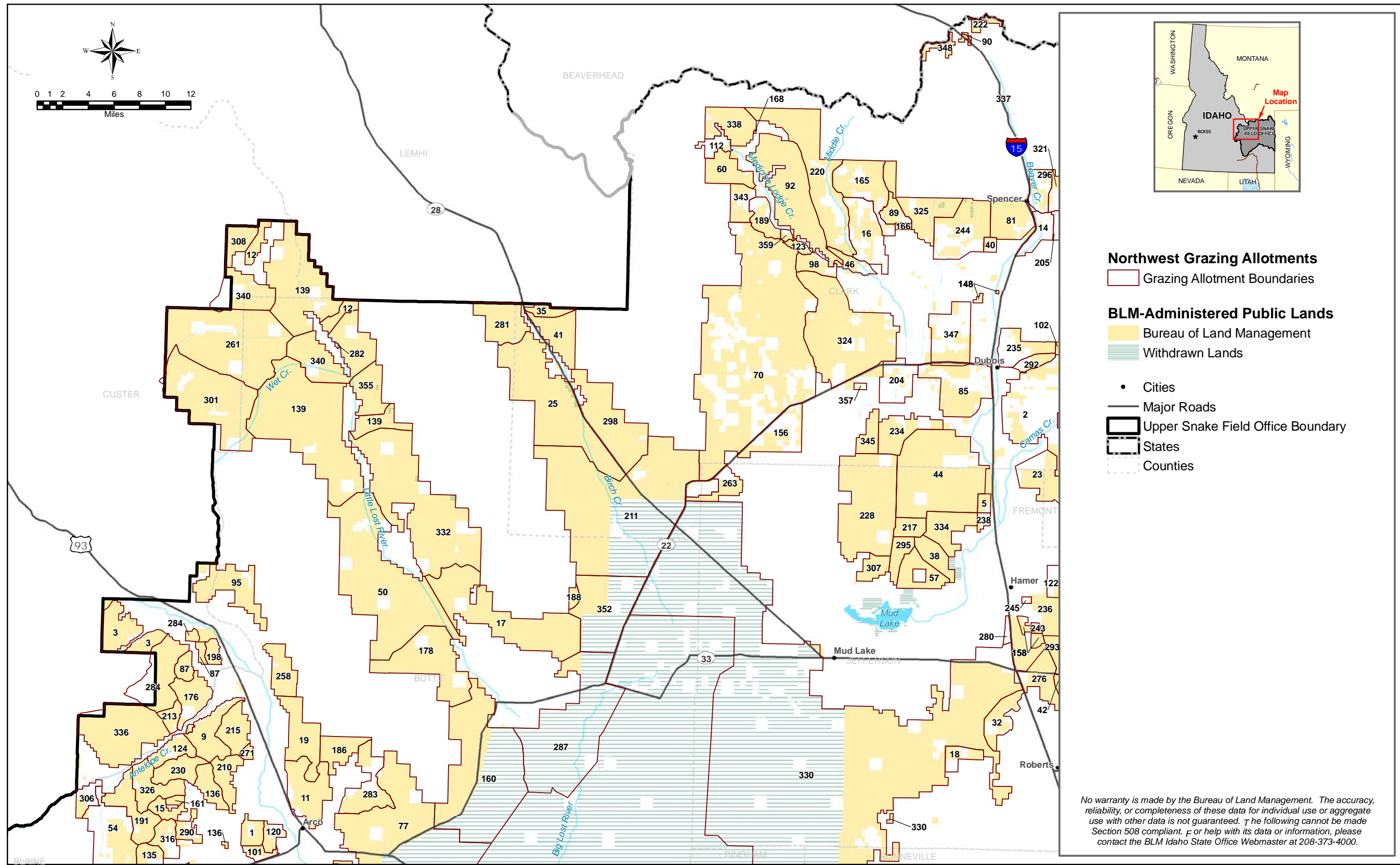


A-18. Grazing allotments found in the northeast quadrant of the Upper Snake Field Office area. (See Chapter 2, Livestock Grazing, Key Features section, for additional information for the allotments shown on the map).





A-20. Grazing allotments found in the southwest quadrant of the Upper Snake Field Office planning area. (See Chapter 2, Livestock Grazing, Key Features section, for additional information for the allotments shown on the map).



A-21. Grazing allotments found in the northwest quadrant of the Upper Snake Field Office planning area. (See Chapter 2, Livestock Grazing, Key Features section, for additional information for the allotments shown on the map).