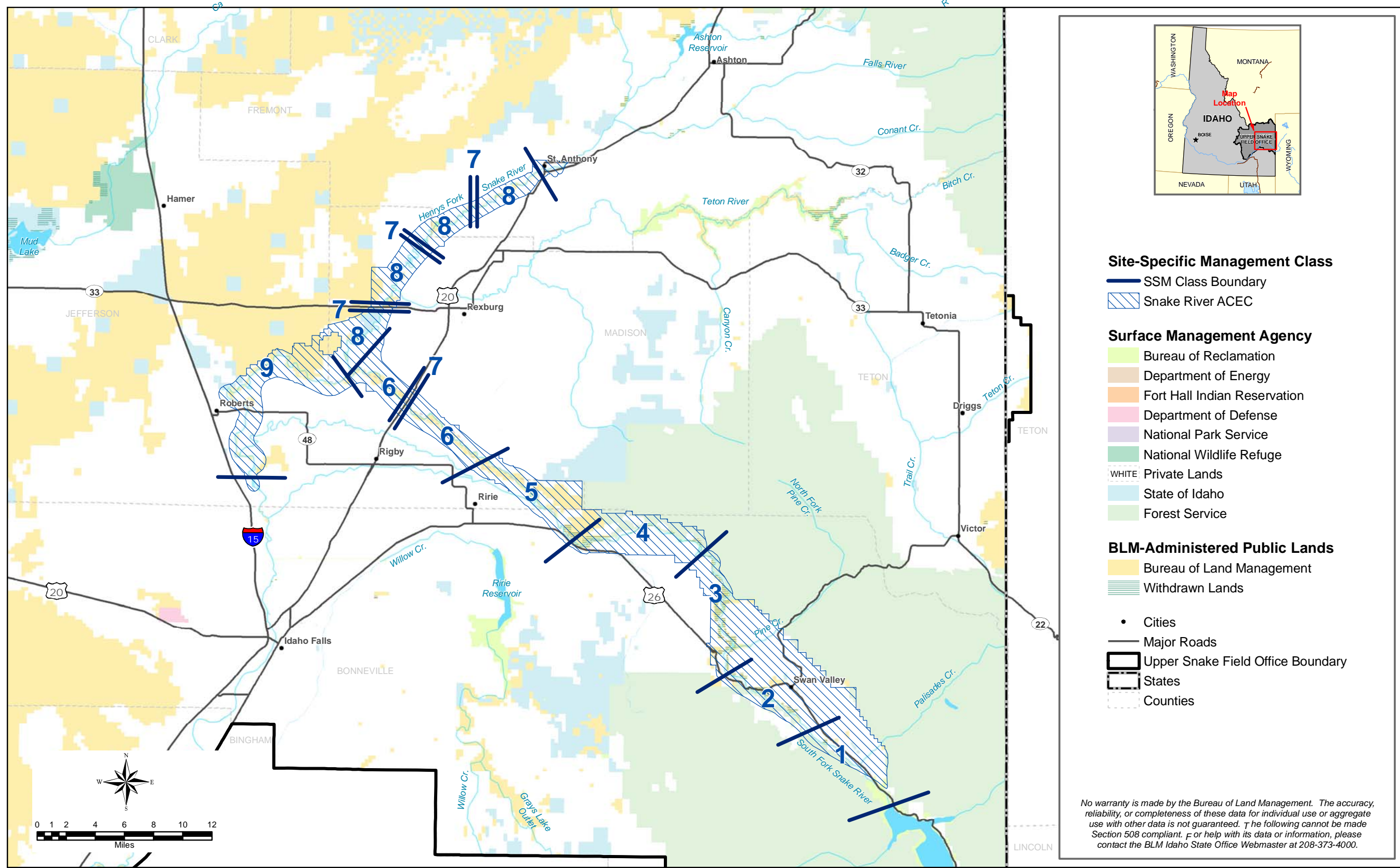
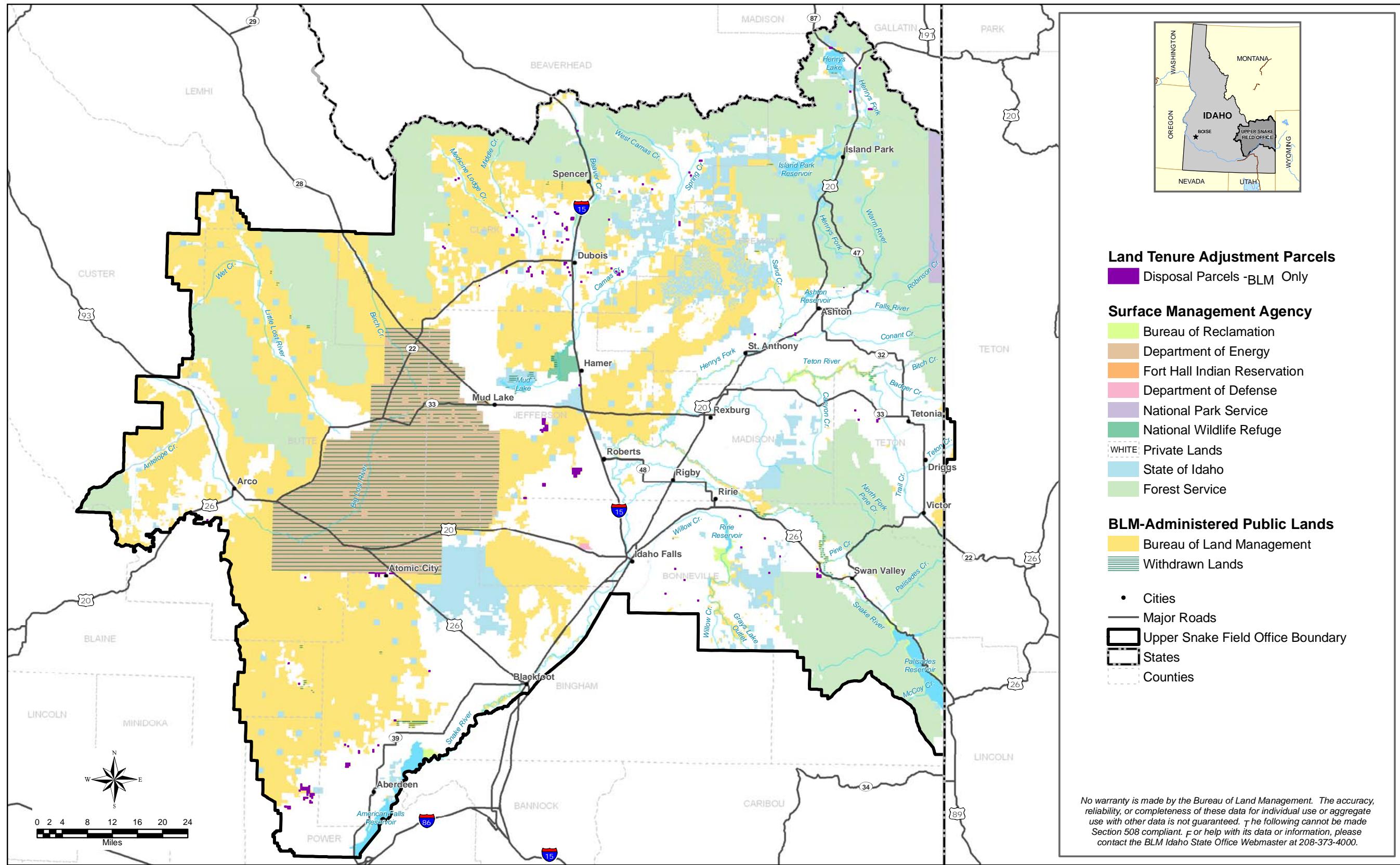


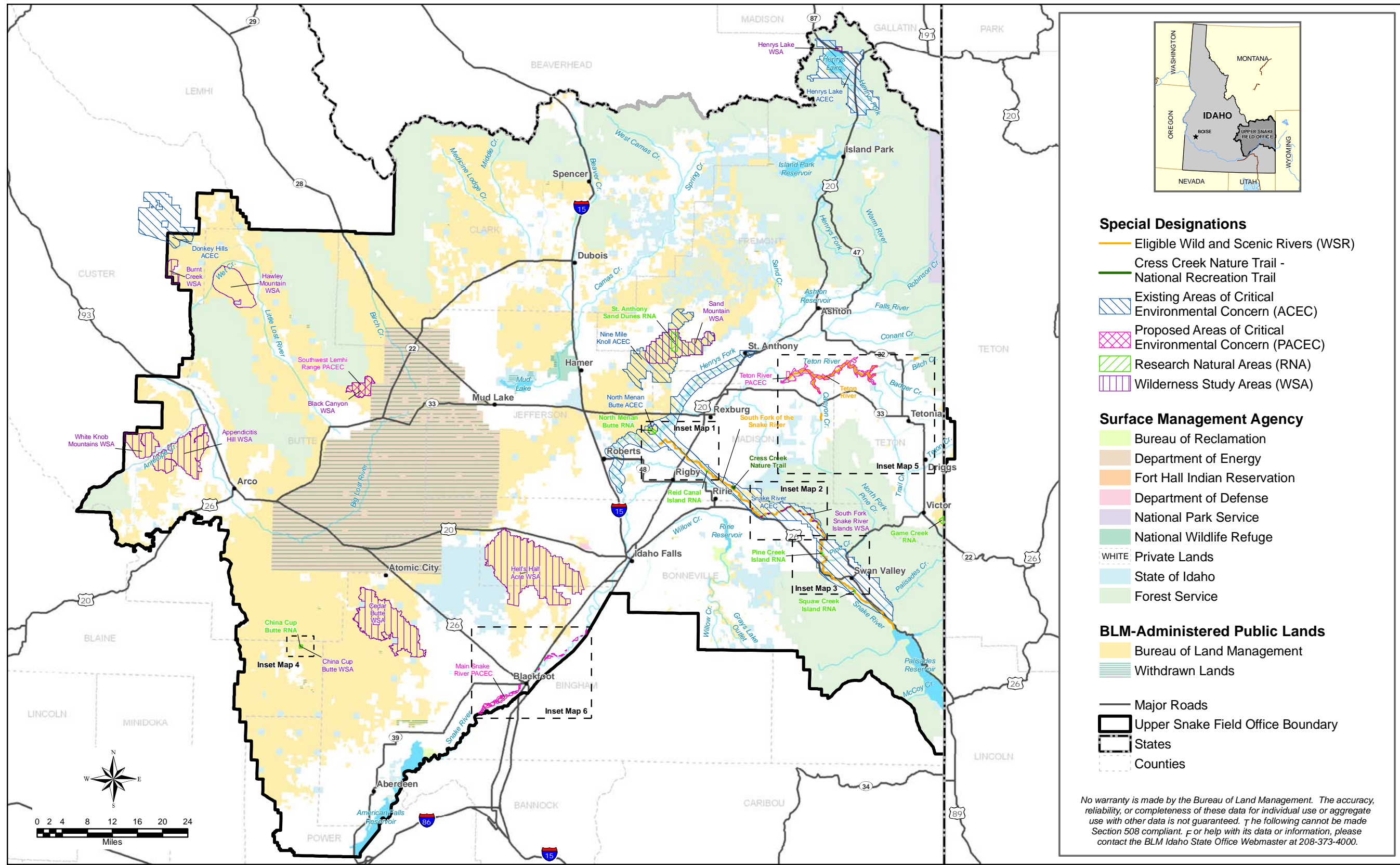
A-22. Existing special recreation management areas in the Upper Snake Field Office area.



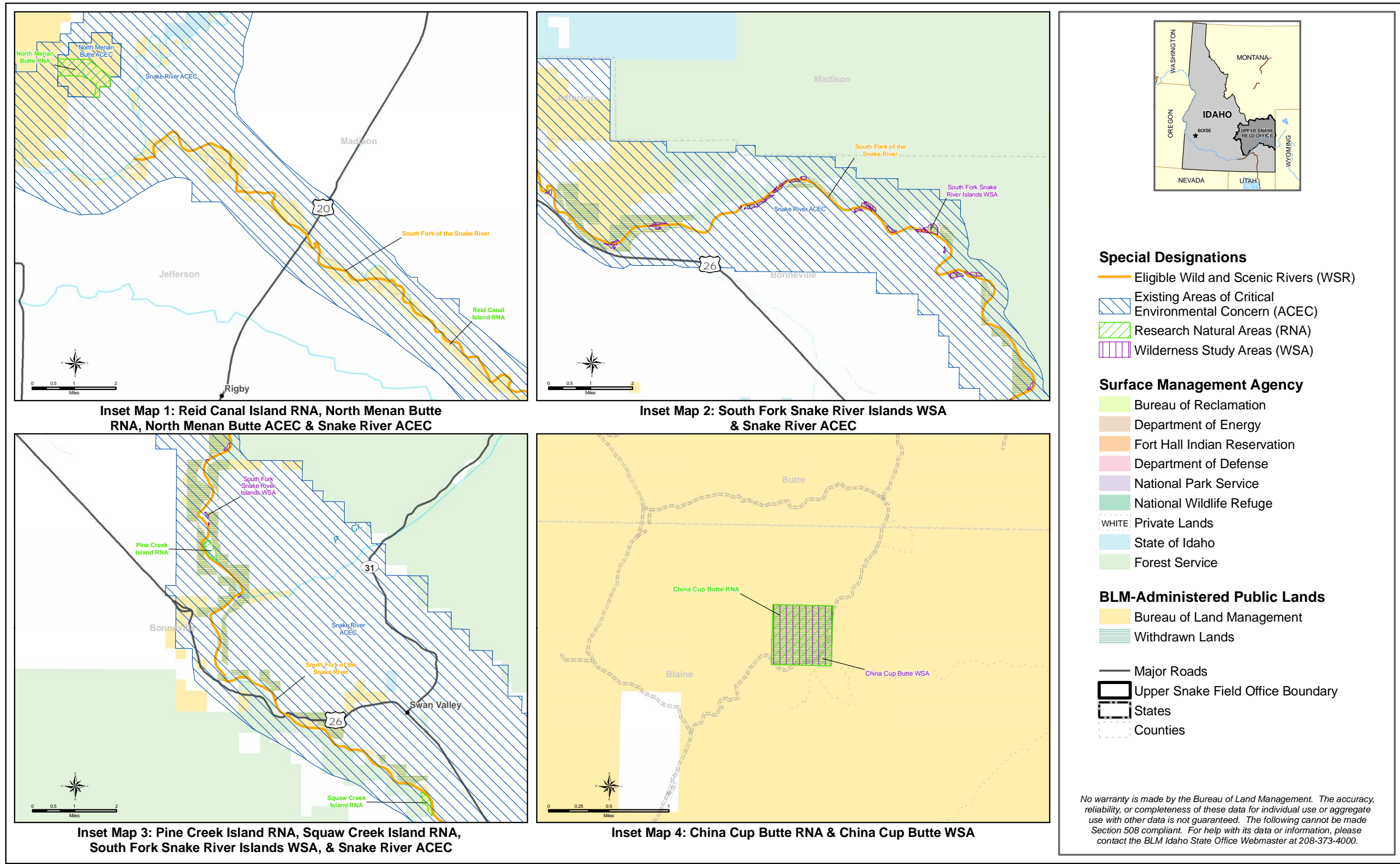
A-23. Site-specific management classes for the Main Snake, South Fork, and Henry's Fork of the Snake River in the Upper Snake Field Office area.



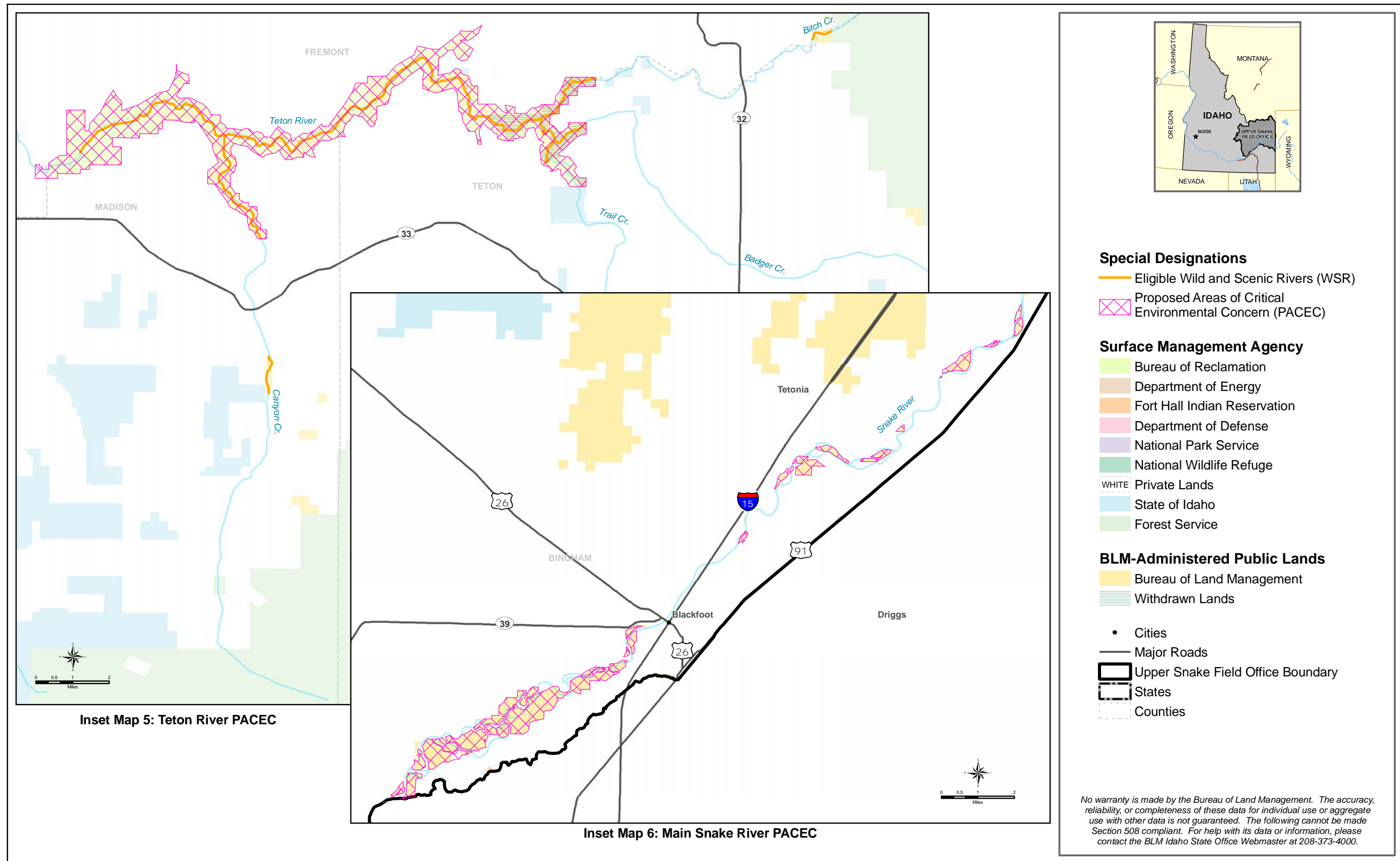
A-24. Lands tenure adjustment parcels in the Upper Snake Field Office area.



A-25. Special designations found in the Upper Snake Field Office area.



A-26. Detail views of selected areas of special designations shown on A-25.



A-27. Detail views of selected areas of special designations shown on A-25.