

## Appendix A—Maps

*This page left intentionally blank.*

# Appendix Contents

---

Map Reference Information .....	A-1
Source Statements .....	A-1
Projection .....	A-2
Organization/Logo .....	A-3
Date .....	A-3
Disclaimers .....	A-3
References .....	A-3
A-1. Land status for the Upper Snake Field Office planning area .....	A-5
A-2. Level IV ecoregions for the Upper Snake Field Office planning area .....	A-6
A-3. Area of consideration, air quality concerns and, airsheds associated with the Upper Snake Field Office planning area. ....	A-7
A-4. Soil orders found in the Upper Snake Field Office planning area .....	A-8
A-5. 303(d) streams found in the Upper Snake Field Office planning area .....	A-9
A-6. Existing vegetation found in the Upper Snake Field Office area as described by the National Vegetation Classification Standard (Federal Geographic Data Committee, 2008. FGDC-STD-005-2008, Version 2). ....	A-10
A-7. Grizzly bear primary conservation area, distribution, and suitable habitat in the Upper Snake planning area .....	A-11
A-8. Sage-grouse habitat in the Upper Snake Field Office planning area .....	A-12
A-9. General locations of seasonal mule deer habitats within the Upper Snake Field Office planning area. ....	A-13
A-10. General locations of seasonal pronghorn antelope habitats within the Upper Snake Field Office planning area. ....	A-14
A-11. General locations of seasonal elk habitats within the Upper Snake Field Office planning area. ....	A-15
A-12. General locations of bighorn sheep, moose, and mountain goat habitats within the Upper Snake Field Office planning area. ....	A-16
A-13. National Scenic and Historic Trails within the Upper Snake Field Office planning area. ....	A-17

A-14. Areas suitable for wildland fire use in the Upper Snake Field Office area. ....A-18

A-15. Communities-at-Risk within the Upper Snake Field Office planning area. ....A-19

A-16. Existing visual resource management classes within the Upper Snake Field Office area. ....A-20

A-17. Commercial timber found within the Upper Snake Field Office area. ....A-21

A-18. Grazing allotments found in the northeast quadrant of the Upper Snake Field Office area.  
(See Chapter 2, Livestock Grazing, Key Features section, for additional information for the  
allotments shown on the map). ....A-22

A-19. Grazing allotments found in the southeast quadrant of the Upper Snake Field Office  
planning area. (See Chapter 2, Livestock Grazing, Key Features section, for additional  
information for the allotments shown on the map). ....A-23

A-20. Grazing allotments found in the southwest quadrant of the Upper Snake Field Office  
planning area. (See Chapter 2, Livestock Grazing, Key Features section, for additional  
information for the allotments shown on the map). ....A-24

A-21. Grazing allotments found in the northwest quadrant of the Upper Snake Field Office  
planning area. (See Chapter 2, Livestock Grazing, Key Features section, for additional  
information for the allotments shown on the map). ....A-25

A-22. Existing special recreation management areas in the Upper Snake Field Office area. ....A-26

A-23. Site-specific management classes for the Main Snake, South Fork, and Henry’s Fork  
of the Snake River in the Upper Snake Field Office area. ....A-27

A-24. Lands tenure adjustment parcels in the Upper Snake Field Office area. ....A-28

A-25. Special designations found in the Upper Snake Field Office area. ....A-29

A-26. Detail views of selected areas of special designations shown on A-25. ....A-30

A-27. Detail views of selected areas of special designations shown on A-25. ....A-31

# Appendix A—Maps

---

## Map Reference Information

The map reference information section is provided in accordance with Bureau of Land Management (BLM) Instruction Memorandum No. ID-2010-004 (BLM 2009), Cartographic Collar Standards. The sections that follow and the information therein are applicable for Figures A-1 through A-27 of Appendix A of the Upper Snake Field Office (FO) Analysis of the Management Situation, December 2009.

## Source Statements

The following source statements are applicable for Figures A-1 through A-27 of Appendix A:

- Surface Management Agency from BLM, Upper Snake FO, and BLM, Idaho State Office (SO) 1:100,000 data.
- Withdrawn Lands from BLM, Upper Snake FO 1:24,000 data.
- Cities from U.S. MapData; Places from the Environmental Systems Research Institute (ESRI).
- Major Roads from GeoCommunicator.gov, U.S. Department of Interior (DOI).
- Upper Snake FO Boundary from BLM, Upper Snake FO 1:24,000 data.
- States from GeoCommunicator.gov, DOI.
- Counties from GeoCommunicator.gov, DOI.
- Roads and States on Locator Maps from StreetMap USA data from ESRI.
- Ecoregions from United States Environmental Protection Agency (EPA) 1:250,000 data.
- Sensitive Populations in Idaho from U.S. Geographic Names Information System data, and Sensitive Populations in Montana and Wyoming from U.S. MapData Places from ESRI.
- Non-Attainment and/or Maintenance Areas are from Idaho Department of Environmental Quality (IDEQ) 1:100,000 data.
- Airshed Zones, Class I Areas, and Air Impact Areas from Montana-Idaho Airshed Group and United States Department of Agriculture (USDA) Forest Service (USFS) Northern Region Fire Management Geographic Information Systems, 1:100,000 data.
- Soil Order data from U.S. Department of Agriculture, Natural Resources Conservation Service 1:250,000 data.
- Section 303(d) Streams and Lakes, and Other Perennial Streams and Lakes from IDEQ 1:100,000 data.
- Watershed Boundaries from Idaho Department of Water Resources (IDWR) 1:24,000 data.
- Existing Vegetation from BLM, Upper Snake FO.
- Sage-grouse Habitat from BLM, Idaho State Office and Idaho Department of Fish and Game (IDFG) 1:100,000 data.

- Mule Deer Habitat, Pronghorn Habitat, Elk Habitat, Bighorn Sheep Habitat, Moose Habitat, and Mountain Goat Habitat from BLM, Upper Snake FO, and IDFG 1:250,000 data.
- Continental Divide Trail from BLM, Upper Snake FO, and USDA USFS.
- Nez Perce Trail from BLM, Upper Snake FO 1:24,000 data.
- Jeffrey–Goodale Cutoff data from BLM, Upper Snake FO.
- Communities at Risk developed from 1:100,000 or smaller data from the IDWR and BLM, Idaho SO.
- Wildland Fire Use (WFU) Areas from BLM, Upper Snake FO.
- Existing VRM Classes from BLM, Upper Snake FO 1:24,000 data.
- Commercial Timber from BLM, Upper Snake FO 1:24,000 data.
- Forest and Woodland from BLM, Upper Snake FO.
- Grazing Allotment Boundaries from BLM, Upper Snake FO.
- Special Recreation Management Areas from BLM, Upper Snake FO 1:100,000 data.
- Site Specific Management Class Boundary from BLM, Upper Snake FO 1:500,000 data.
- Snake River ACEC from BLM, Upper Snake FO 1:24,000 data.
- Land Tenure Adjustment Parcels developed from 1:24,000 data from BLM, Upper Snake FO.
- Cress Creek Nature Trail from BLM, Upper Snake FO 1:24,000 data.
- Eligible Wild and Scenic Rivers developed from 1:24,000 data from BLM, Upper Snake FO.
- Existing Areas of Critical Environment Concern developed from 1:24,000 data from BLM, Upper Snake FO.
- Proposed Areas of Critical Environmental Concern developed from 1:24,000 data from BLM, Upper Snake FO and U.S. Bureau of Reclamation.
- Research Natural Areas developed from 1:24,000 data from BLM, Upper Snake FO.
- Wilderness Study Areas developed from 1:24,000 data from BLM, Upper Snake FO.
- Grizzly Bear Distribution/Occurrence and Suitable Habitat from U.S. Fish and Wildlife Service.
- Grizzly Bear Primary Conservation Area from Interagency Grizzly Bear Management Team.

## **Projection**

Appendix A Figures A-1 through A-27 use the following projection:

- UTM Zone 12 North, NAD 1983 datum, Meters.

## Organization/Logo

The organization that produced Appendix A Figures A-1 through A-27 is the U.S. Department of the Interior, Bureau of Land Management, Upper Snake Field Office, 1405 Hollipark Drive, Idaho Falls, Idaho, 83401, (208)524-7500, under the following organizational logos:



## Date

Appendix A Figures A-1 through A-27 were produced in 2009.

## Disclaimers

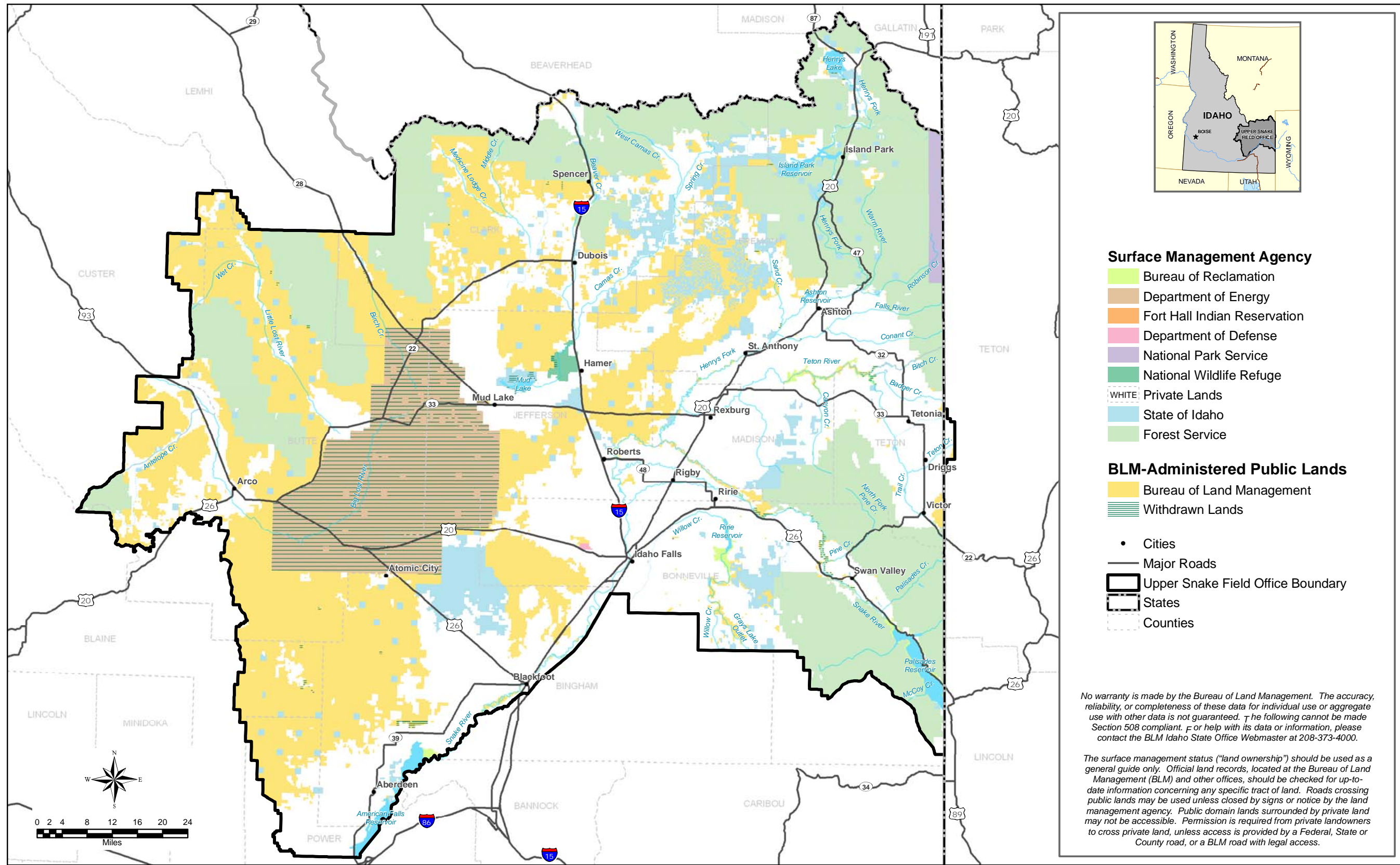
No warranty is made by the Bureau of Land Management. The accuracy, reliability, or completeness of these data for individual use or aggregate use with other data is not guaranteed. The following cannot be made Section 508 compliant. For help with its data or information, please contact the BLM Idaho State Office Webmaster at 208-373-4000.

The surface management status (“land ownership”) should be used as a general guide only. Official land records, located at the Bureau of Land Management (BLM) and other offices, should be checked for up-to-date information concerning any specific tract of land. Roads crossing public lands may be used unless closed by signs or notice by the land management agency. Public domain lands surrounded by private land may not be accessible. Permission is required from private landowners to cross private land, unless access is provided by a Federal, State or County road, or a BLM road with legal access.

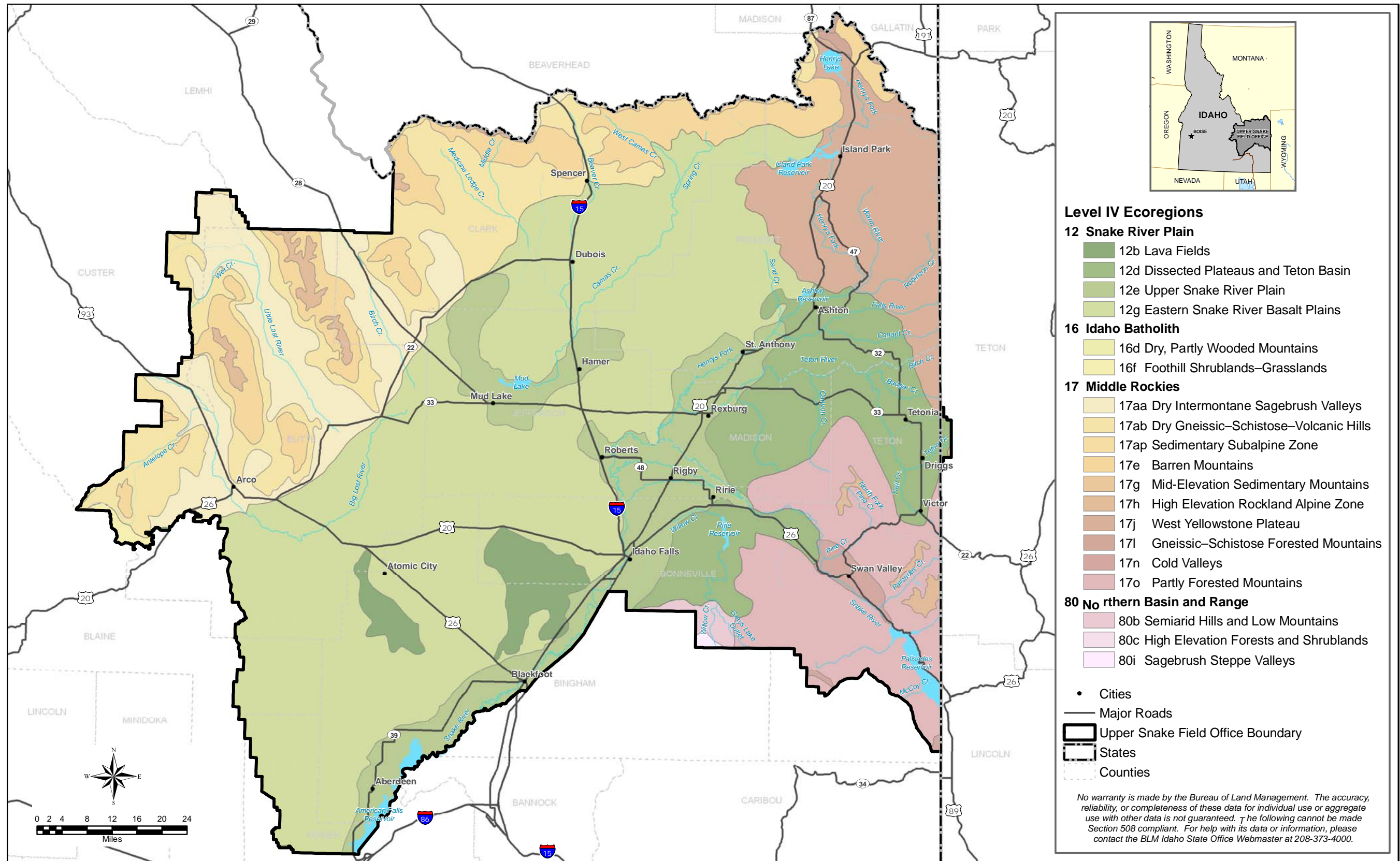
## References

BLM, 2009. “Instruction Memorandum No. ID-2010-004, Cartographic Collar Standards.” DOI, BLM, Washington Office. November 16.

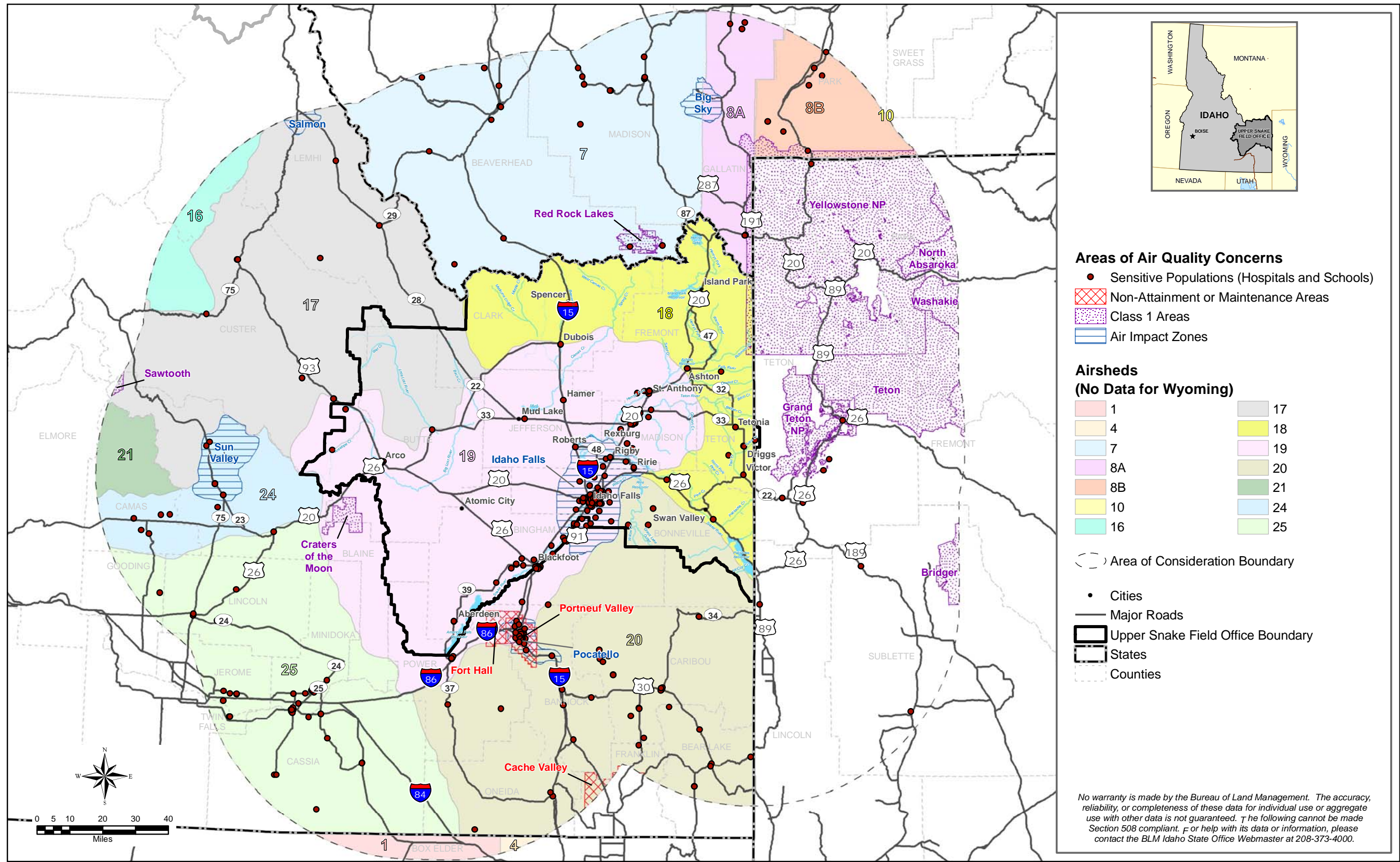
*This page left intentionally blank.*



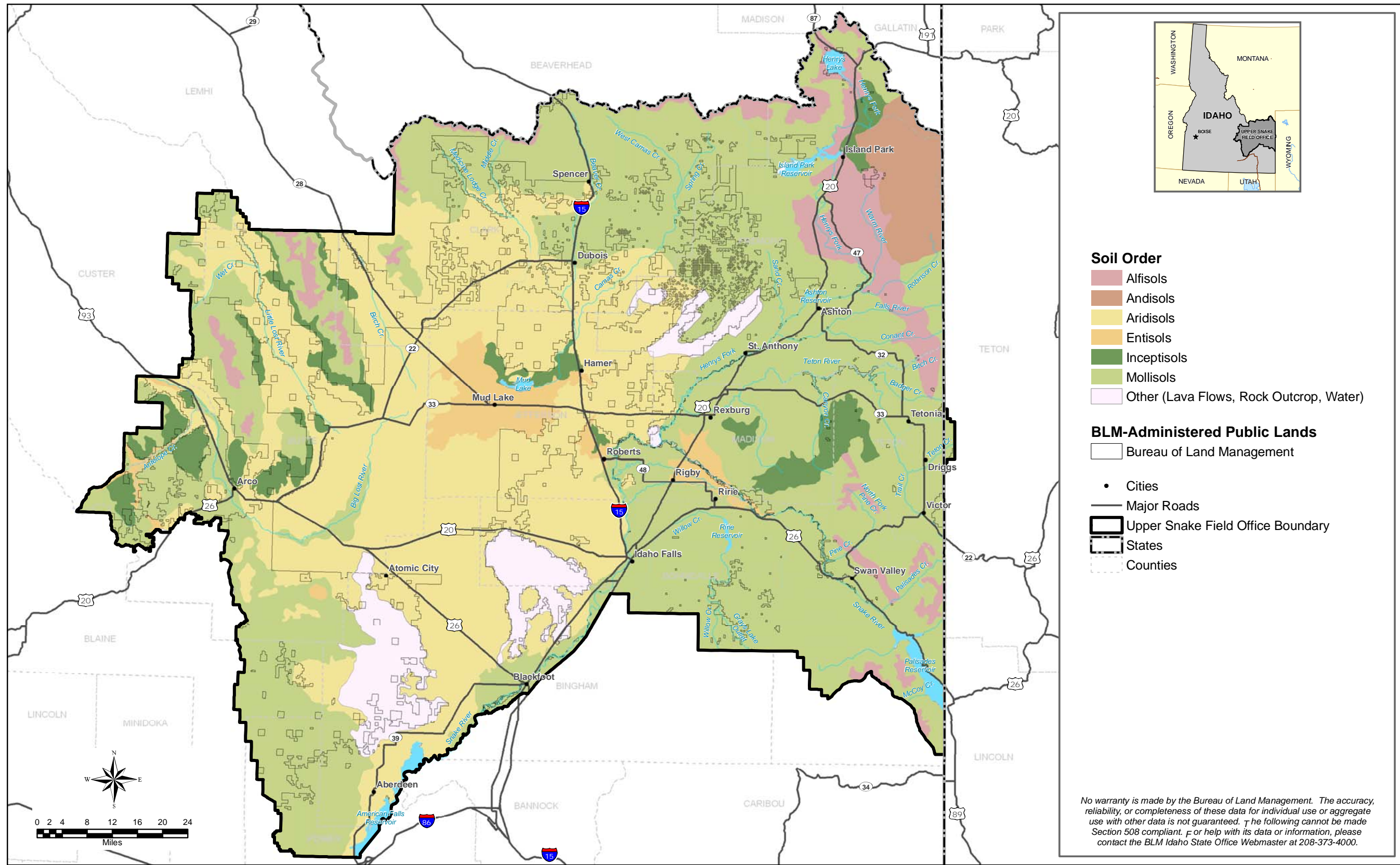
A-1. Land status for the Upper Snake Field Office planning area.



A-2. Level IV ecoregions for the Upper Snake Field Office planning area.



A-3. Area of consideration, air quality concerns and, airsheds associated with the Upper Snake Field Office planning area.



A-4. Soil orders found in the Upper Snake Field Office planning area.