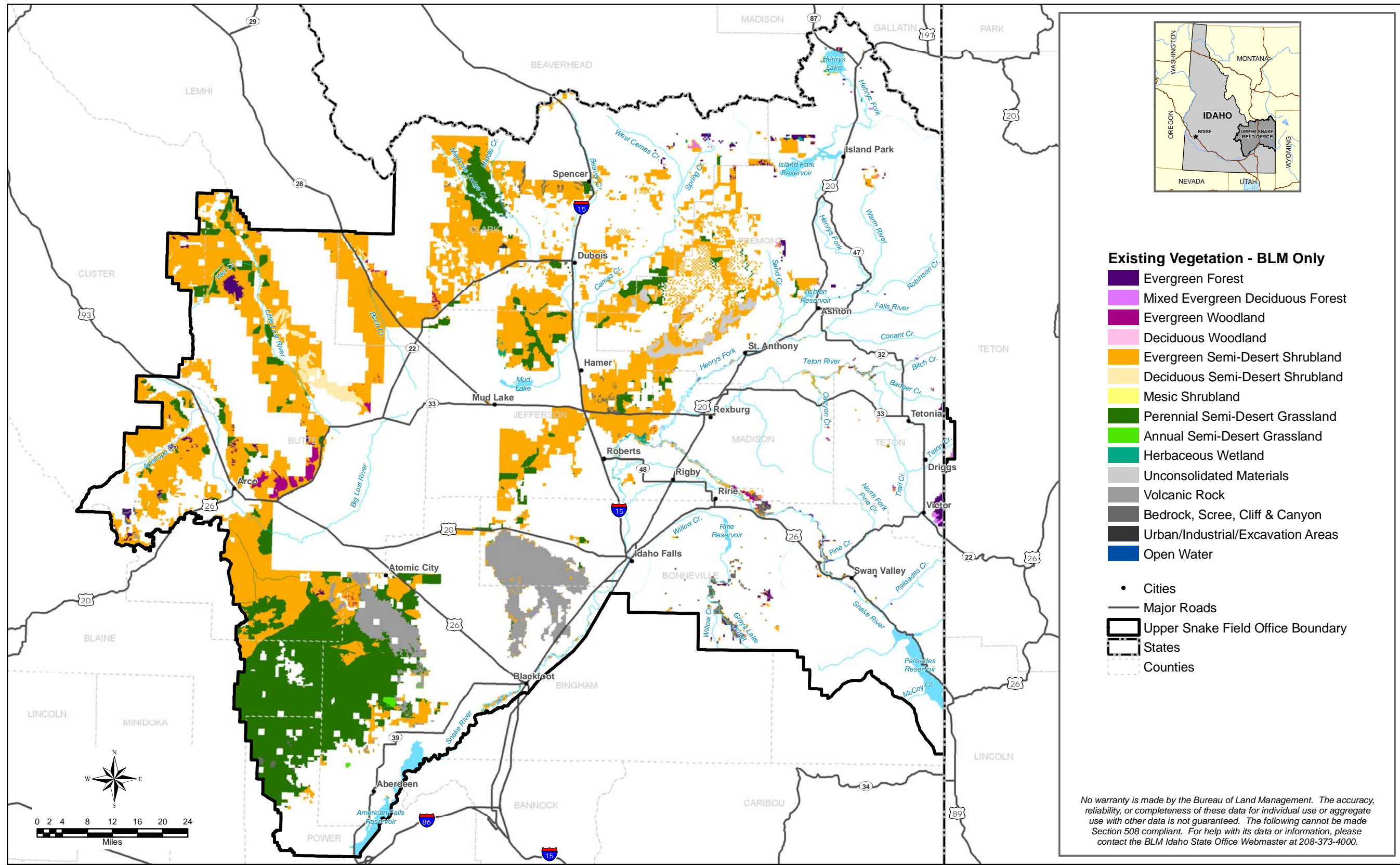
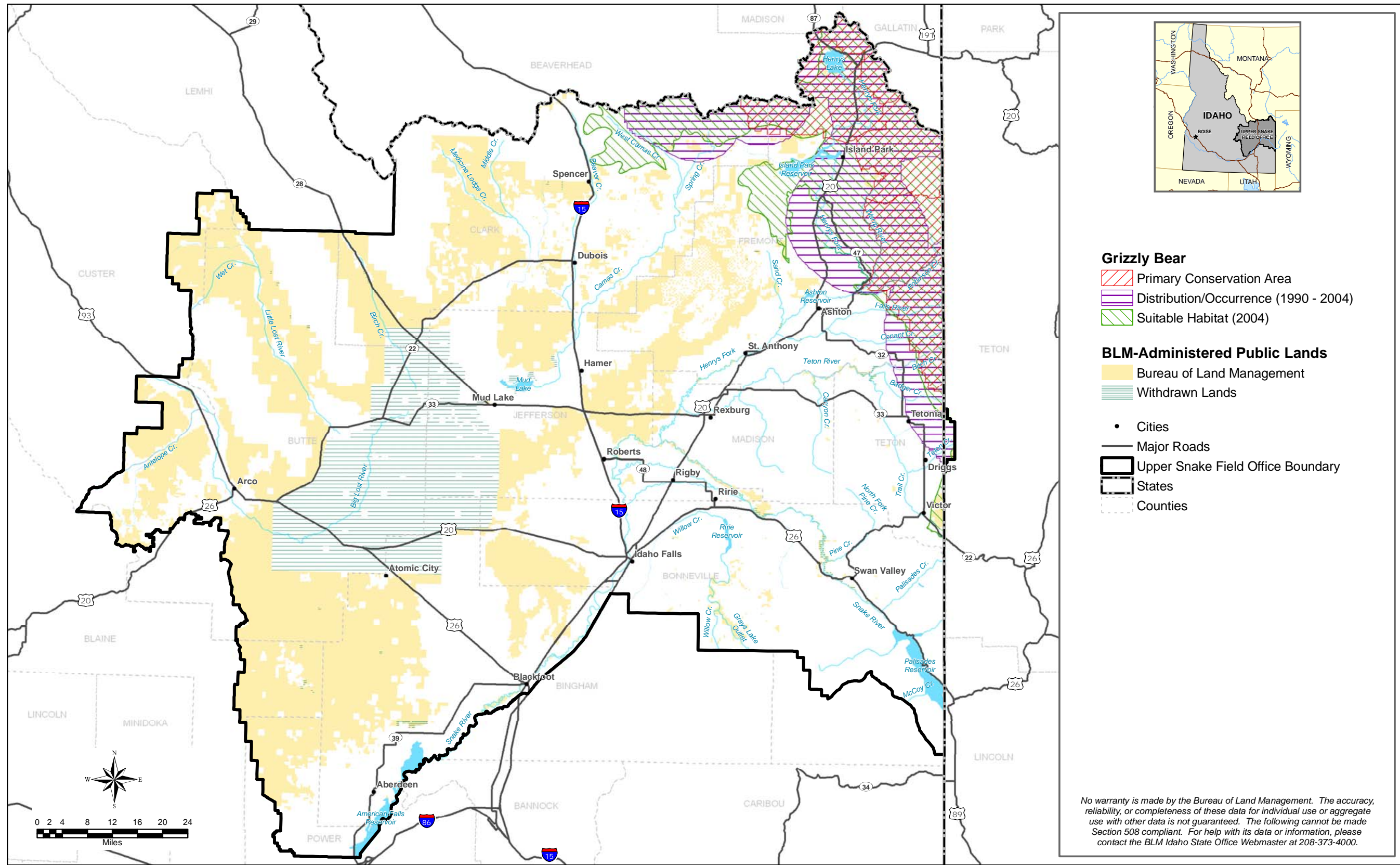


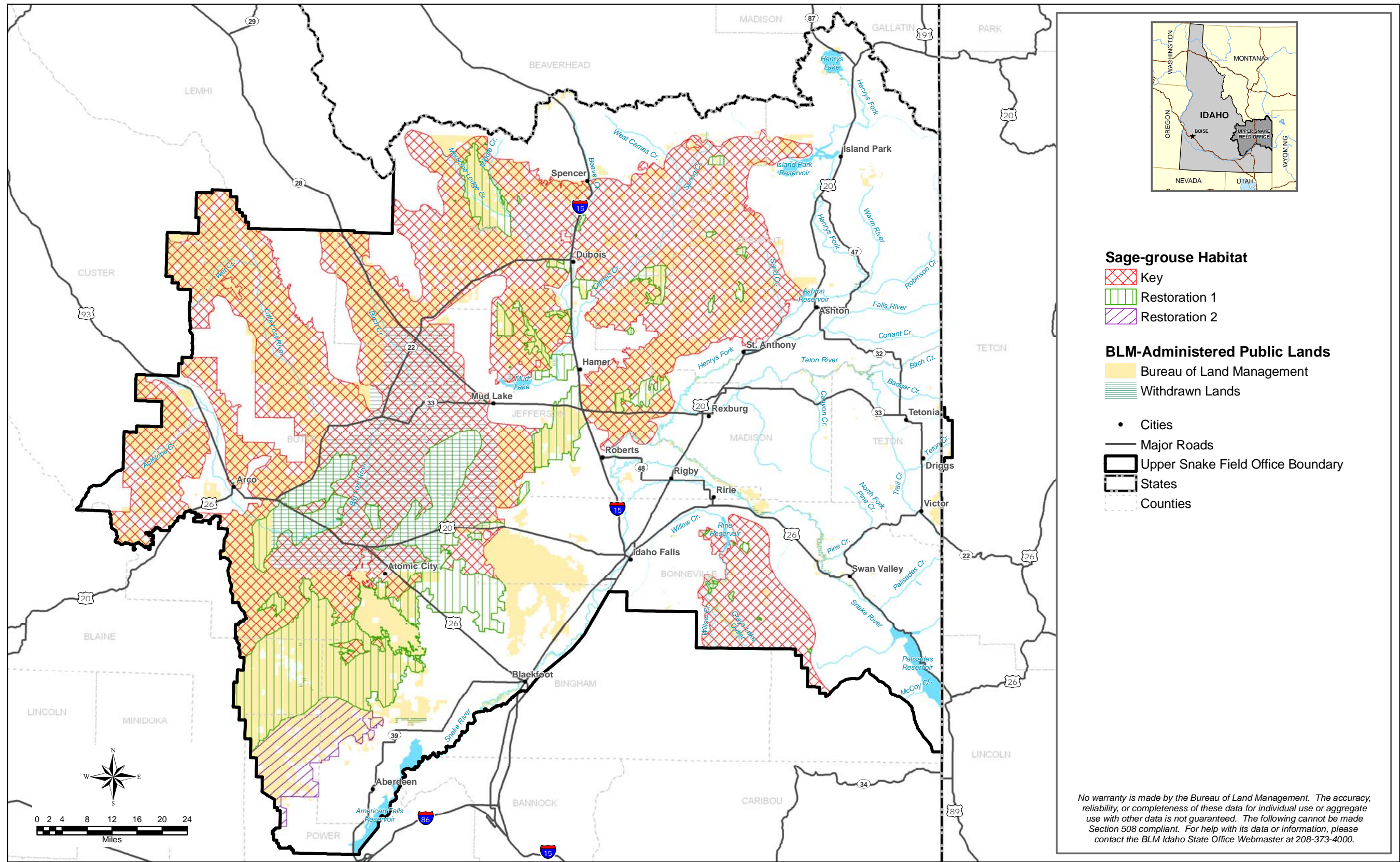
A-5. 303(d) streams found in the Upper Snake Field Office planning area.



A-6. Existing vegetation found in the Upper Snake Field Office area as described by the National Vegetation Classification Standard (Federal Geographic Data Committee, 2008. FGDC-STD-005-2008, Version 2).



A-7. Grizzly bear primary conservation area, distribution, and suitable habitat in the Upper Snake planning area.



A-8. Sage-grouse habitat in the Upper Snake Field Office planning area.