



**U.S. Department of the Interior
Bureau of Land Management**



Upper Snake River District
Shoshone Field Office
Shoshone, Idaho

August 2003

**Amendments
to
Shoshone Field Office Land Use Plans
for
Land Tenure Adjustment
and
Areas of Critical Environmental Concern**



United States Department of the Interior

BUREAU OF LAND MANAGEMENT

Shoshone Field Office
400 West F Street – PO Box 2-B
Shoshone, Idaho 83352-1522
(208) 732-7200

In Reply Refer To:
1675 (ID-076)

August 18, 2003

Dear Public Lands User:

Attached for your information and use are a Decision Record and Amendments to the Shoshone Land Use Plans for Land Tenure Adjustment and Areas of Critical Environmental Concern (ACECs). This documentation completes the land use planning and environmental review process needed to implement changes to land tenure management direction and ACEC designations for the Shoshone Field Office and an ACEC designation for the Four Rivers Field Office. The amendments apply to approximately 1.44 million acres of public lands administered by the Shoshone Field Office, and about 840 acres administered by the Four Rivers Field Office.

The approved Amendments are the same as the proposed management direction that was described and analyzed in the *Proposed Amendments to Shoshone Land Use Plans for Land Tenure Adjustment and Areas of Critical Environmental Concern* (USDI-BLM, April 2003), with one change: The King Hill Creek ACEC will remain open to livestock grazing. Due to a protest on the proposed amendments, the management prescriptions for the King Hill Creek ACEC were re-evaluated by the protester, the Idaho Department of Fish and Game, and the BLM. The three parties agreed that livestock are not presently causing impacts to the values for which the ACEC is designated, and another management action for the ACEC (prescription “g” of the approved Amendments) will ensure that actions can be taken if livestock become an issue in the ACEC. [**Note:** Prescription “g” states that the BLM will authorize only those actions within the ACEC “which maintain or improve desirable habitat conditions for redband trout.”]

Additional copies of the approved Shoshone Land Use Plans Amendments and Decision Record may be obtained by visiting or writing the BLM, Upper Snake River District, Shoshone Field Office at P.O. Box 2-B, 400 West F Street, Shoshone, Idaho 83352-1522, calling the Field Office at (208) 732-7200, or sending an e-mail message to ID_Shoshone_LUPA@blm.gov.

Thank you for your interest and participation in the planning process for these land use plan amendments. I look forward to your continuing involvement as we implement the management guidance contained in the amendments.

Sincerely,

A handwritten signature in black ink, appearing to read 'Bill Baker', with a stylized, cursive script.

Bill Baker
Field Manager

Attachment (1)

Table of Contents

Decision Record	i
Summary of the Shoshone Land Use Plans Amendments	1
Planning Issues and Concerns	2
Affected Area	2
Amendments to Shoshone Field Office Land Use Plans	4
Land Tenure Adjustment	4
Lands Status and Management Zones	6
Criteria for Land Ownership Adjustment	11
Additional Management Direction	13
ACEC Designations	17
Management Applicable to all Three New ACECs	17
King Hill Creek ACEC/RNA	19
McKinney Butte ACEC/RNA	19
Tee-Maze ACEC/RNA	20
Amendments Monitoring and Evaluation	24
Attachment 1: Lands Identified for Potential Disposal under FLTFA	25
References Cited	36

List of Maps

Map 1: Shoshone Field Office Public Lands Managed According to Existing Land Use Plans	vi
Map 2: Shoshone Field Office Land Status and Tracts Identified for Potential Disposal	3
Map 3: Land Tenure Management Zones	7
Map 4: New and Existing ACECs in the Shoshone Field Office	18
Map 5: King Hill Creek ACEC/RNA	21
Map 6: McKinney Butte ACEC/RNA	22
Map 7: Tee-Maze ACEC/RNA	23

List of Tables

Table 1: Steps in Evaluating Land Tenure Adjustment Proposals	5
Table 2: Land Status within Each Management Zone	6

Decision Record

Decision

The BLM's decision is to amend the Shoshone Field Office's land use plans by incorporating the management direction described below. The Amendments are the same as the *Proposed Amendments to Shoshone Field Office Land Use Plans* published in April 2003, except for one change in management direction for the King Hill Creek ACEC (the ACEC will remain open to livestock grazing). [Note: The *Proposed Amendments* were the same as the preferred alternative (Alternative 3) identified in the *Draft Amendments to Shoshone Field Office Land Use Plans/Environmental Assessment* (June 2002), with minor revisions made in response to public comments received on the *Draft Amendments*.]

The Amendments apply to approximately 1.44 million acres of public lands managed by the Shoshone Field Office. These management actions and designations amend the Magic Management Framework Plan (MFP) approved in 1975, the Bennett Hills/Timmerman Hills MFP (1976), the Sun Valley MFP (1982), and the Monument Resource Management Plan (RMP) (1985). The King Hill Creek ACEC designation also amends the Jarbidge RMP, approved in 1987. This designation applies to approximately 840 acres of public lands managed by the Four Rivers Field Office – BLM.

The Amendments include the following changes in management direction:

Land Tenure Adjustment - Existing management limits land tenure adjustment through disposal to those tracts that were identified for potential disposal in the existing land use plans (approximately 50,000 acres). The amendments change land tenure adjustment guidance for the entire Shoshone Field Office area by defining land management areas or “zones” where public lands are emphasized for retention or can be considered for disposal. Zone 1 lands (approximately 14,000 acres) are identified for retention and will not be disposed of. Zone 2 lands (about 950,000 acres) will also be retained, except for public lands along a boundary with Zone 3, 4, or 5 that may be disposed of in order to acquire additional high resource value lands and/or consolidate public lands ownership. Zone 3 (127,000 acres) emphasizes land tenure adjustments that consolidate ownership and improve manageability of public lands. Zone 4 (62,000 acres) contains public lands that are isolated from one another and from other public lands tracts managed by the Shoshone Field Office; the emphasis in this zone is to dispose of appropriate tracts primarily through exchange, in order to improve resource values and consolidate ownership within Zones 1, 2, 3, and 5. Like Zone 3, Zone 5 (121,000 acres) stresses consolidation of ownership; however, unique considerations of the Zone 5 area (Wood River Valley) must be evaluated prior to any land tenure adjustment.

In addition to utilizing a “zones” approach to defining retention and adjustment areas, the amendments identify criteria for evaluating land tenure adjustment proposals. These criteria are intended to help the BLM consistently review land tenure adjustment proposals and determine which lands are the highest priority for retention, acquisition, and disposal. The amendments also provide detailed direction for various specific aspects of land tenure, including acquisition priorities, emphasis on State and private land exchanges and sales, DLE/Carey Act disposals, R&PP Act leases and patents, aquifer recharge and communication site authorization, management of the Isolated Wildlife Tract Program, resolution of unauthorized use, split estate mineral situations, and acquisition of access. All land tenure adjustment actions will be required to comply with the guidelines in the Federal Land Policy Management Act (FLPMA), meet the criteria for land ownership adjustment and the emphasis of the applicable management zone(s), stand on their own merit through public input and review, and be in compliance with NEPA.

ACEC Designations: The amendments designate three new Areas of Critical Environmental Concern/Research Natural Areas (ACECs/RNAs) totaling 17,026 acres. These designations amend existing management direction for the Bennett Hills/Timmerman Hills MFP and the Jarbidge RMP. The King Hill Creek ACEC/RNA (approximately 2,500 acres) is designated to highlight management of scenic, fisheries, and riparian values. Unique management to maintain the pristine qualities of the ACEC includes closure to introduction of non-native genetic strains of trout, mineral material sales/free use permits, new land use authorizations, and motorized vehicle use; weed treatment; a visual resource management Class I designation; and a focus on management which maintains or improves desirable habitat conditions for redband trout. The McKinney Butte ACEC/RNA (3,764 acres) and the Tee-Maze ACEC/RNA (10,762 acres) both highlight management of scenic, wildlife, and cave resource values. Unique management for these cave ACECs includes additional activity planning to identify measures needed to protect cave resource values; seasonal cave access restrictions; motorized vehicle use limitations; and restrictions on new land use authorizations. The Tee-Maze ACEC/RNA also has limitations on mineral material sales and free use permits.

Rationale for the Decision

Existing management plans for the Shoshone Field Office do not address some of the current resource management concerns within the planning area or provide flexibility to respond to changing public interests and needs. The Shoshone land use plan amendments resolve concerns relating to both of the identified planning issues: land tenure adjustment and ACEC designations.

Land Tenure Adjustment

Existing management limits land tenure adjustments through disposal (sale, exchange, R&PP patent, etc.) to the approximately 50,000 acres of disposal tracts that are listed in the approved MFPs and RMP. These tracts do not appear to meet the needs of private individuals or city, county, and State governments, since no applications for the transfer of these lands have been submitted in recent years. Conversely, the Shoshone Field Office has nearly 200 applications/proposals for land tenure adjustment of public lands that are not identified for disposal in the current land use plans. Amendments to the current land use plans are needed to achieve numerous objectives which cannot be attained under existing management:

- establish consistent direction for evaluating land tenure adjustment proposals;
- improve the time- and cost-efficiency of the lands program;
- make lands available for public purposes (city, county, State, and tribal) as future needs arise;
- resolve long-standing applications for Desert Land Entry and Carey Act disposals;
- resolve long-standing cases of unauthorized use;
- improve the BLM's ability to acquire high value lands and resources; and
- consolidate public lands, thereby improving management efficiency.

The Amendments would meet all of the land tenure management objectives stated above.

Area of Critical Environmental Concern (ACEC) Designations

The attached Amendments also designate the three ACECs and associated management prescriptions from the *Proposed Amendments*, with one change. (The King Hill Creek ACEC will remain open to livestock grazing.) The Environmental Assessment (pages 105-111 and 113) indicated that existing management fails to provide sufficient management direction to fully protect resources within three of the nominated areas that met relevance and importance criteria for designation as ACECs. The BLM has therefore chosen to designate those three areas and implement new management direction.


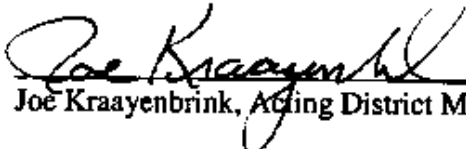

- The impacts analysis for the King Hill Creek ACEC (Environmental Assessment, pp. 105-107 and 113) indicated designation and management will protect and improve Interior redband trout habitat and help insure the genetic purity of the existing strain of Interior redband trout, a BLM sensitive species. Protection of the genetic strain will help reduce the need to list Interior redband trout as a threatened or endangered species. Under existing management direction for King Hill Creek, this genetically pure population of Interior redband trout will continue to be at risk of hybridization. Designating the King Hill Creek ACEC and implementing the identified management direction will focus management attention on the identified ACEC values and reduce the risk of loss or damage to those values. For example, restrictions on introduction of non-native genetic strains of trout into King Hill Creek should preserve the genetic integrity of the existing Interior redband trout population.
- The BLM's Upper Snake River District, including the Shoshone Field Office area, contains the largest concentration of caves in the State of Idaho and one of the largest concentrations of caves within the BLM's national jurisdiction. The impacts analysis for the McKinney Butte and Tee-Maze ACECs (Environmental Assessment, pp. 108-113) indicated designation and management will reduce impacts to fragile and irreplaceable cave resources (physical, scenic, and biological). Under existing management direction, those resources will continue to be at risk of loss or damage. Designating these two areas as ACECs and implementing the identified management direction will focus management attention on the identified ACEC values and reduce the risk of loss or damage to those values. For example, restrictions on cave access should reduce human disturbance of bat hibernacula and reduce the potential for bat mortality which could lead to listing of the Townsend's Western big-eared bat, a BLM sensitive species.

Four additional ACECs were proposed for designation in Alternative 2: Bennett Hills, Camas Creek, Coyote Hills, and Dry Creek. The BLM has chosen not to make these designations because either (a) the resource protection desired can be achieved under existing management, and/or (b) an ACEC designation would increase the risk of adverse impacts to the identified ACEC values.

- The impacts analysis for the Camas Creek and Dry Creek ACEC designations indicated little to no difference in impacts from continuing existing management versus designating the ACECs (Environmental Assessment, pp. 95-98 and 101-104). Management to maintain or enhance the identified scenic and ecological ACEC values has already been implemented or can be implemented if needed under existing management guidance in the Bennett Hills/Timmerman Hills MFP. An ACEC designation is not necessary in order to protect the ACEC values.
- The impacts analysis for the Bennett Hills and Coyote Hills ACECs disclosed that highlighting the cultural values in those areas through an ACEC designation may increase the potential for adverse impacts to occur (Environmental Assessment, pp. 92, 99-100, and 113). An ACEC designation would call attention to the general location of cultural resources and thereby increase the potential for vandalism or unauthorized excavation and collection. Existing management (Bennett Hills/Timmerman Hills MFP), law, regulation, and policy afford the BLM the ability to implement additional management actions to protect cultural values in those areas without an ACEC designation. Site-specific cultural clearances will continue to be required prior to approval of mineral activities, which will insure cultural resources are not adversely affected by those actions. Currently, off-highway vehicle (OHV) use is light. If use increases to the point where cultural resources are affected, the BLM has the authority to restrict OHV use in order to protect cultural resources.

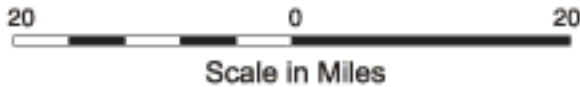
- The public lands nominated as the Bennett Hills ACEC, but not proposed for ACEC designation, will continue to be managed according to the management direction stated in the Bennett Hills/ Timmerman Hills MFP (1976), including the following summary of actions: manage mule deer, elk, and antelope habitat to provide food and cover for specified populations; improve 283,000 acres of sage grouse brood rearing habitat; manage for a maximum diversity of vegetative species in order to meet the habitat requirements for a variety of wildlife species; provide for the protection and conservation of threatened or endangered plants; and implement management practices on all grazing lands in the Bennett Hills area to reach and maintain good range condition. This direction will enable the BLM to effectively manage vegetation and wildlife resources in the Bennett Hills area without an ACEC designation, including resources that were nominated as ACEC values (e.g., sagebrush ecosystem, sage grouse), but did not meet relevance and importance criteria for ACEC designation.

After careful review of the Environmental Assessment of and comments received on the *Draft Amendments*, the BLM has decided to implement Alternative 3 identified in the *Draft Amendments*, with slight changes in response to public comments on the *Draft Amendments* and a protest letter received on the *Proposed Amendments*. These Amendments to existing management direction provide a framework for land tenure adjustment that will be flexible, efficient, and responsive to public, government, and tribal needs in the present and future. The Amendments also improve resource protection for fragile fisheries and cave resources by designating three new Areas of Critical Environmental Concern in the Shoshone Field Office.

Prepared by:	 <hr/> Bill Baker, Shoshone Field Manager	<u>8/18/03</u> Date
Recommended by:	 <hr/> Joe Kraayenbrink, Acting District Manager	<u>8/18/03</u> Date
Approved by:	 <hr/> K Lynn Bennett, State Director	<u>8/20/03</u> Date

Amendments
to
Shoshone Field Office Land Use Plans
for
Land Tenure Adjustment
and
Areas of Critical Environmental Concern

MAP 1 SHOSHONE FIELD OFFICE PUBLIC LANDS MANAGED ACCORDING TO EXISTING LAND USE PLANS



Area Of Interest

Map Legend	
Shoshone Field Office Boundary.....	
Craters of the Moon National Monument	
Bennett Hills/Timmerman Hills MFP.....	
Magic MFP.....	
Sun Valley MFP.....	
Monument RMP.....	
Highway: Interstate; U.S.; State.....	

Land management actions would only apply to public lands administered by the BLM.

Even though every effort is made to depict the road network and other features as accurately as possible, the Bureau of Land Management (BLM) cannot guarantee road classification and/or positional accuracy of roads and other features in all cases. No warranty is made by the BLM for use of these data for purposes not intended by the BLM.

Summary of the Shoshone Land Use Plans Amendments

The management direction in this document amends the following four land use plans in order to define new land tenure adjustment criteria and designate three new Areas of Critical Environmental Concern (ACECs) within the Upper Snake River District, BLM's Shoshone Field Office area (see Map 1): the Magic Management Framework Plan (MFP) (1975), Bennett Hills/Timmerman Hills MFP (1976), Sun Valley MFP (1982), and Monument Resource Management Plan (RMP) (1985). [Note: The Monument RMP guides management of public lands administered by the Burley Field Office and the Shoshone Field Office. The Amendments only apply to sections of the Monument RMP that guide management of Shoshone Field Office-managed lands.] These four land use plans provide a framework for land use allocations and management of public lands within the 1.44 million-acre Shoshone Field Office area. The Amendments replace existing land tenure adjustment decisions in those plans and make new ACEC designations and management decisions. Other management decisions in the current plans remain unchanged.

Designation of the King Hill Creek ACEC/RNA also amends the Jarbidge RMP (BLM 1987), which provides management direction for public lands administered by the Four Rivers Field Office, Lower Snake River District, BLM.

The Amendments were developed to achieve the following:

- Establish new direction for land tenure adjustment within the Shoshone Field Office area.
- Make lands available for public purposes, including city, county, State, and Tribal purposes.
- Make decisions regarding ACECs nominations and management direction.
- Provide for planning consistency within the BLM's Shoshone Field Office management area.

The Shoshone Field Office sought public and tribal input on the Amendments during an initial scoping period, a public comment period on a Draft Amendments/Environmental Assessment document (USDI-BLM, June 2002), and a Governor's consistency review/public protest period on the Proposed Amendments (USDI-BLM, April 2003). The BLM also initiated and completed consultation with the two affected tribes (Shoshone-Bannock Tribes and Shoshone-Paiute Tribes), the U.S. Fish and Wildlife Service, and the State Historic Preservation Office. No inconsistencies with the officially approved or adopted resource-related plans, policies, and programs of tribes, other federal agencies, or State and local governments were identified during the amendments planning process.

The Amendments are derived from the management direction that was described and analyzed in two prior planning documents: *Proposed Amendments to Shoshone Field Office Land Use Plans* (USDI-BLM, April 2003) and *Draft Amendments to Shoshone Field Office Land Use Plans/Environmental Assessment* (USDI-BLM, June 2002). The Draft Amendments/Environmental Assessment described and analyzed existing management (Alternative 1) and three "action" alternatives, including the BLM's preferred alternative (Alternative 3). Based on public comments and some new information, the preferred alternative was modified slightly and then analyzed as the Proposed Amendments. The Amendments defined in this document carry forward the management direction contained in the Proposed Amendments with only one change: the King Hill Creek ACEC will remain open to livestock grazing. Due to a protest on the proposed amendments, the management for the ACEC was re-evaluated by the protester, the Idaho Department of Fish and Game, and the BLM. The three parties agreed that livestock are not presently causing impacts to the values for which the ACEC is designated, and another management action for the ACEC (prescription "g" of the approved Amendments) will ensure that actions can be taken if livestock become an issue in the ACEC. [Note: Prescription "g" states that the BLM will authorize only those actions within the ACEC "which maintain or improve desirable habitat conditions for redband trout."]

Planning Issues and Concerns

Initial scoping for the plan amendments identified two planning issues: land tenure adjustment and new ACEC designations.

The amendments address the following concerns related to land tenure adjustment:

- Improve manageability of public lands by consolidating ownership and focusing on management priorities within watersheds.
- Emphasize retention and acquisition of high resource value lands and public access.
- Provide for disposal of lower resource value and/or scattered and isolated parcels.
- Provide for resolution of long term unauthorized uses.
- Establish criteria to consistently evaluate land tenure adjustment proposals.
- Increase flexibility to meet the existing and future land tenure adjustment needs of private individuals; local, state, and federal government agencies; Indian tribes; and the BLM.
- Improve the efficiency of the land tenure adjustment process.

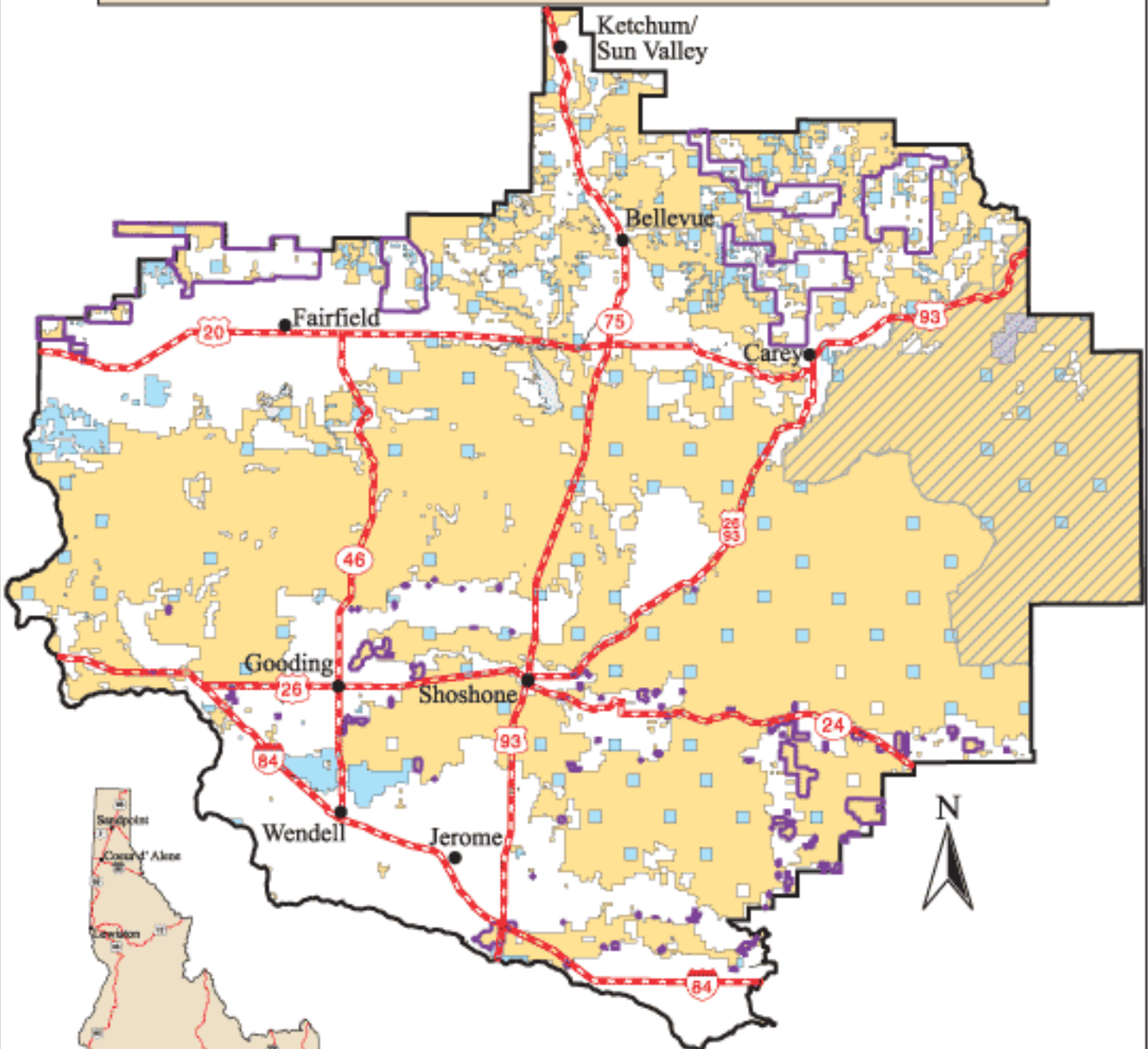
The amendments also resolve the planning issue related to ACEC designations by:

- Designating as ACECs only those nominated areas that met relevance and importance criteria for designation, where designation is the most appropriate avenue to provide special management for the identified values and resources; and
- Identifying special management to maintain or enhance the identified values and resources.

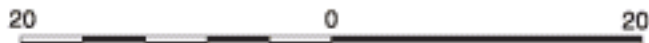
Affected Area

The BLM's Shoshone Field Office manages approximately 1.44 million acres of public lands in south-central Idaho (see Map 2). Public lands comprise approximately 52% of all lands within the planning area (2.77 million acres), which lies within Blaine, Camas, Gooding, Jerome, Lincoln, Elmore, and Minidoka counties. Private lands account for approximately 1.2 million acres, or 43% of the planning area, while State lands total 144,000 acres or 5%. Designation of the King Hill Creek ACEC/RNA also affects approximately 840 acres of public lands managed by the Four Rivers Field Office - BLM in the King Hill Creek area (see Map 5, p. 21).

MAP 2 SHOSHONE FIELD OFFICE LAND STATUS AND TRACTS IDENTIFIED FOR POTENTIAL DISPOSAL UNDER FLTFA



Area of Interest



Scale in Miles

Map Legend

- Shoshone Field Office Boundary
- Bureau of Land Management
- State
- Private
- National Park Service
- Craters of the Moon National Monument
- Public Lands identified for potential disposal under the Federal Land Transaction Facilitation Act (FLTFA)
- Highway: Interstate; U.S.; State

Even though every effort is made to depict the road network and other features as accurately as possible, the Bureau of Land Management (BLM) cannot guarantee road classification and/or positional accuracy of roads and other features in all cases. No warranty is made by the BLM for use of these data for purposes not intended by the BLM.

Amendments to Shoshone Field Office Land Use Plans

The Amendments to the Shoshone Field Office Land Use Plans include amended land tenure adjustment management direction (pages 4-16, Map 2 (page 3), and Attachment 1 (pages 25-35)) and new ACEC designations and management direction (pages 17-20 and Maps 4-7 (pages 18, 21-23)).

Land Tenure Adjustment

The Amendments identify land tenure adjustment availability and priorities for large land areas called “zones” (areas that contain common issues or planned actions), instead of identifying specific parcels by legal description. The Amendments also establish new land tenure adjustment review criteria. The result is a flexible, dynamic mechanism whereby the BLM and a proponent can evaluate the merits of a proposal by considering factors that include (a) the zone’s emphasis on retention or land tenure adjustment (see zone descriptions on pages 6-11 below), (b) specific criteria for land ownership adjustment (see pages 11-12), and other applicable management actions (listed on pages 13-16).

Once the Shoshone Field Office determines that a land tenure adjustment proposal is consistent with requirements of the Federal Land Policy Management Act (FLPMA), the project area’s zone definition, and the Amendments’ criteria for land ownership adjustment, the BLM will consider the likelihood that the proposal will have public support. If the proposal appears to have public support, the BLM will assess current and anticipated workloads, priorities, staff, and funding, and set a priority for the proposal to be evaluated through appropriate NEPA documentation. Each individual action will be required to comply with direction in FLPMA, be within the Amendments’ guidelines for land tenure adjustment, meet the project area’s zone definition and the Criteria for Land Ownership Adjustment, and stand on its own merit through public input and review. All disposals, whether by sale, exchange, or other authority, are subject to a decision by the authorized officer which will be based on detailed NEPA analysis and documentation as prescribed by law or regulation.

The following example illustrates how a proposal will be considered according to the Amendments’ land tenure adjustment framework:

Table 1: Steps in Evaluating Land Tenure Adjustment Proposals

Step 1: Land Tenure Adjustment Proposal Submitted

Does the proposal meet the intent of FLPMA? Is there a Federal interest (i.e., public benefit) to implementing the proposal? If the proposal is a land exchange, are the monetary values of the offered and selected lands relatively similar?

YES - Continue to step 2.

NO - No further consideration of the action as presently proposed.

Step 2: Proposal Screened by Zone Definition

Does the proposal fit within the guidelines of the affected area's zone definition for the selected amendment?

YES - Continue to step 3.

NO - No further consideration of the action as presently proposed.

Step 3: Proposal Screened by Land Ownership Adjustment Criteria

Is the proposed action a high priority based on the land ownership adjustment criteria?

YES - Continue to step 4.

NO - No further consideration of the action as presently proposed.

Step 4: Likelihood of Proposal Receiving Public Support

Is it likely the proposal will receive public support during the NEPA process?

YES - Continue to step 5.

NO - No further consideration of the action as presently proposed.

Step 5: Scheduling the Proposal for Appropriate Public Involvement and NEPA

Given established and future priorities, current and anticipated public and private funding and staffing, and the extent to which the proposal will benefit the American public, what should be the priority for completing the NEPA work on this proposal?

Lands Status and Management Zones

The Amendments identify five land management zones, as shown on Map 3 and defined below.

The approximate acreage of each zone is shown in Table 2. All acres and percentages cited in the zone definitions are based upon the information in this table.

Table 2: Land Status Within Each Lands Management Zone

Note: Acres and percentages are approximate.

Zone	Private (acres)	State (acres)	BLM (acres)	Total	
				acres	%
1	7,000	7,000	180,000	194,000	7
2	92,000	44,000	950,000	1,086,000	39
3	359,000	48,000	127,000	534,000	19
4	573,000	25,000	62,000	660,000	24
5	156,000	20,000	121,000	297,000	11
<i>Total</i>	1,187,000	144,000	1,440,000	2,771,000	100

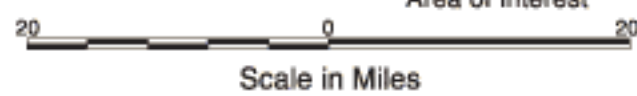
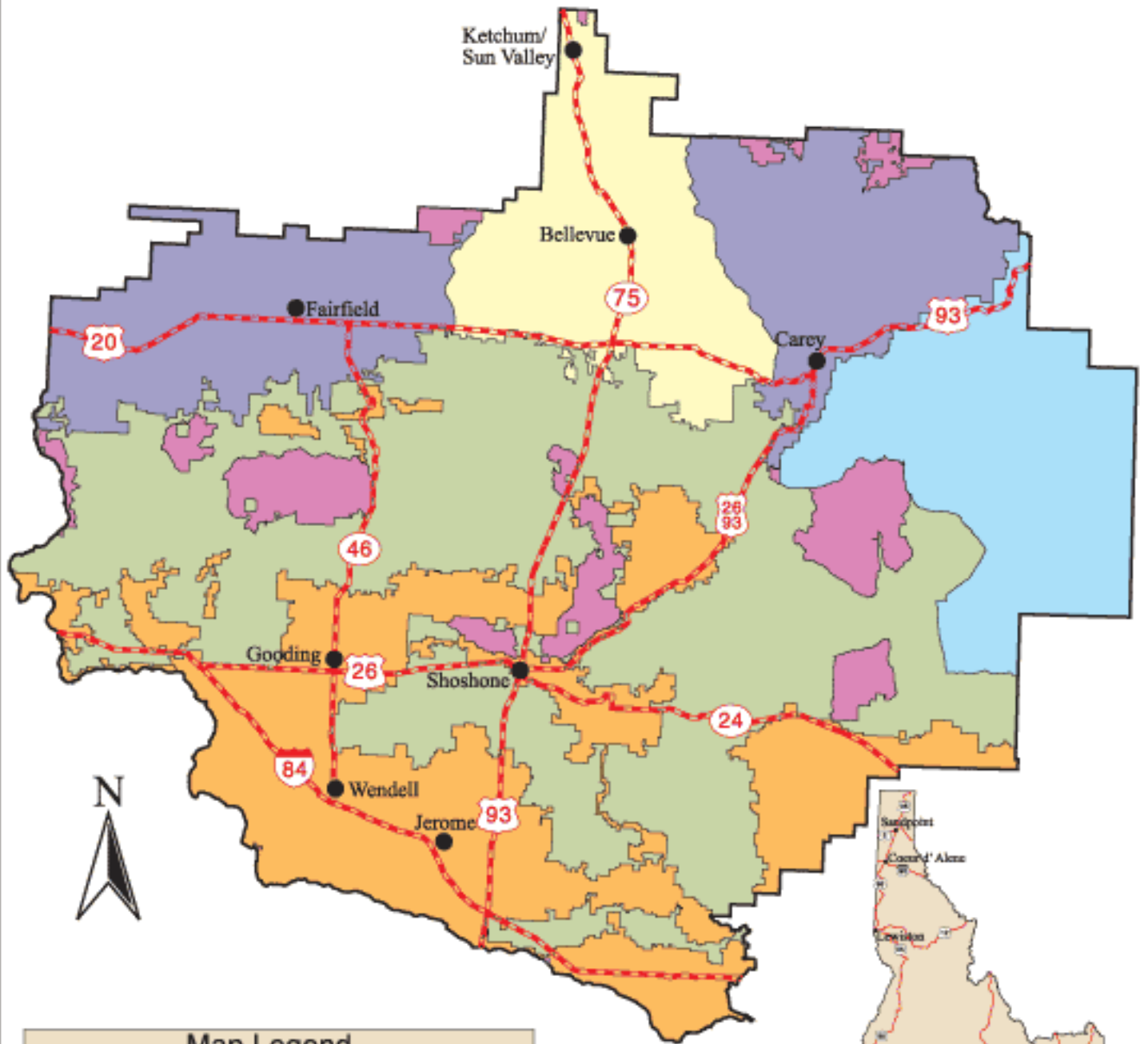
Retention Areas (Zone 1 and Zone 2):

Retention areas are those regions of public lands that will be retained in public ownership.

Zone 1 lands are public lands with special designations because of significant resource values; all Zone 1 lands shall be retained in public ownership. Examples of Zone 1 lands include Wilderness Areas, Wilderness Study Areas (WSAs), National Monuments, National Trails, eligible Wild and Scenic Rivers (W&SR), Natural Conservation Areas (NCAs), and ACECs. Zone 1 lands also include public lands acquired through means, such as the Land and Water Conservation Fund, which require such lands to remain in Federal ownership. In the future, as lands receive a special designation, they will automatically be added to this zone. At present, Zone 1 contains about 180,000 acres of public lands, or 12.5% of public lands managed by the Shoshone Field Office. The zone has few private or State inholdings (14,000 acres or 7% of lands in the zone). The BLM's acquisition priority for Zone 1 is to seek to acquire all private and State land in-holdings. Public access will be considered in all land tenure actions.

Zone 2 lands are public lands that have a fairly well-consolidated ownership pattern and contain potentially high values for resources and land uses such as minerals, recreation, range, riparian, cultural resources, and wildlife habitat. Zone 2 is the largest management zone, and includes 950,000 acres of public lands, or 66% of the public lands managed by the Shoshone Field Office. Zone 2 has a well consolidated ownership pattern, with only 12% of the zone (136,000 acres) in private or State ownership. The BLM's priorities for Zone 2 lands are to:

MAP 3 LAND TENURE MANAGEMENT ZONES



Map Legend	
Shoshone Field Office Boundary...	
Craters of the Moon National Monument.....	
Zone 1.....	
Zone 2.....	
Zone 3.....	
Zone 4.....	
Zone 5.....	
Highway: Interstate; U.S.; State.....	

Land management actions would only apply to public lands administered by the BLM.

Even though every effort is made to depict the road network and other features as accurately as possible, the Bureau of Land Management (BLM) cannot guarantee road classification and/or positional accuracy of roads and other features in all cases. No warranty is made by the BLM for use of these data for purposes not intended by the BLM.

- first, retain the existing large blocks of high value public lands within the zone;
- second, consolidate public lands ownership within high priority watersheds by seeking to acquire private and State inholdings in those watersheds; and
- third, acquire additional high resource value lands within lower priority watersheds, as long as those acquired lands also improve efficiencies in public lands management.

Public lands within ½ -mile of either side of the Zone 2 boundary will be considered potentially suitable for disposal primarily by exchange (and secondarily by sale or R&PP patent), *unless* that ½ mile extends into a Zone 1 (retention) area. Each individual disposal action will be required to comply with the guidelines in FLPMA, meet the Criteria for Land Ownership Adjustment (see pages 11-12), stand on its own merit through public input and review, and be in compliance with NEPA. Public access will be considered in all land tenure actions.

Adjustment Areas (Zone 3, Zone 4, and Zone 5):

Public lands within the three zones labeled as “adjustment areas” are generally smaller parcels that are (a) fragmented because they are interspersed with private and/or State lands or (b) isolated from the larger blocks of public lands within the planning area. These geographic and ownership factors make management of the public lands in Zones 3, 4, and 5 difficult. Most of these lands are therefore identified for disposal through exchange, in order to consolidate land ownership within the three zones. The net result is expected to be larger blocks of public, private, and State lands than at present, with increased public and administrative access to public lands. Although Zones 3, 4, and 5 are considered “adjustment areas” (because most land ownership adjustment in the planning area will occur there), public lands with high resource values will generally be retained in Federal ownership.

Zone 3 lands are small to medium-sized blocks of public lands which are interspersed with State and private lands. Zone 3 lands in the northwest portion of the planning area are also isolated from other public lands managed by the Shoshone Field Office. Zone 3 is a relatively small component of the Field Office area, containing only 127,000 acres or 9% of public lands managed by the Shoshone Field Office. However, the zone has extensive acres in private ownership (359,000 acres or 67% *of the zone*). This zone also has the largest amount of lands in State ownership (48,000 acres or 9% *of the zone*).

The emphasis in Zone 3 is to consolidate ownership, which will maximize public values, provide public access, and improve efficiencies in public lands management. The BLM’s priorities for lands management in Zone 3 are to:

- Maintain the total amount of public land in Zone 3, including lands adjacent to the Sawtooth National Forest and Craters of the Moon National Monument (since these adjoining lands provide public access and improve Federal interagency efficiencies); and
- Acquire, primarily through exchange, additional high resource value lands that improve the manageability of the public lands. (**Note:** These acquisitions will result in disposal of lower resource value and difficult-to-manage tracts of Zone 3 public lands).

Zone 3 lands are potentially suitable for disposal primarily by exchange; however, disposal of lands through sales and R&PP patents will also be allowed in this zone. Specific parcels within the zone may contain potentially high values for resources and land uses such as minerals, recreation, range, riparian, cultural resources, and wildlife habitat. These high-value parcels may not be suitable for disposal individually, except through exchange for equal resource value lands that are adjacent to existing public lands or that improve efficiencies in public land management. Each individual land tenure adjustment action will be required to comply with the guidelines in FLPMA, meet the Criteria for Land Ownership Adjustment (see pages 11-12), stand on its own merit through public input and review, and be in compliance with NEPA. Due to the present land ownership pattern, acquisition of public access will be a high priority in this zone.

Zone 4 lands are small to medium-sized blocks of public lands that are isolated from one another and from other public lands tracts in the Field Office area. Zone 4 public lands comprise only 62,000 acres, or 4% of the public lands administered by the Shoshone Field Office and 9% of all lands in Zone 4. The Isolated Wildlife Tract Program is managed on Zone 4 lands (and some Zone 2 lands) along the Snake River. Public lands in Zone 4 are potentially suitable for disposal primarily by exchange; if land exchanges are not feasible, then land tenure adjustment via sale or R&PP patent will be considered. The land tenure adjustment emphasis in Zone 4 should result in a net decrease in public lands acreage within the zone. However, there may be specific parcels within Zone 4 that contain potentially high values for resources and land uses such as minerals, recreation, range, riparian, cultural resources, and wildlife habitat. These parcels may not be suitable for disposal individually, except through exchange for equal resource value lands that are not fragmented or isolated from existing public lands.

Due to the present land ownership pattern in Zone 4, acquisition of public access will be a low priority in this zone. Each individual lands action will be required to comply with the guidelines in FLPMA, meet the Criteria for Land Ownership Adjustment (see pages 11-12), stand on its own merit through public input and review, and be in compliance with NEPA.

Zone 5 is generally described as an “Area of Influence of the Wood River Valley,” and includes those lands that are within the viewshed of the communities of Bellevue, Hailey, Ketchum, and Sun Valley, Idaho. This zone was created based on public comments and concerns communicated during the scoping period.

The land ownership characteristics of Zone 5 are very similar to Zone 3: public lands are small to medium-sized tracts interspersed with private and State lands. Zone 5 is a small land area, with only 121,000 acres of public lands (8% of lands administered by the Shoshone Field Office and 41% of lands within Zone 5). More acres within the zone are in private ownership than public ownership (156,000 acres of private lands, or 54% of the zone). State lands account for 20,000 acres or 7% of the zone.

The *general* land management strategy for Zone 5 is very similar to that of Zone 3. However, the concerns of the local Wood River Valley communities are addressed through some unique considerations within Zone 5.

Zone 5's General Land Tenure Management Strategy:

The emphasis in Zone 5 is to consolidate ownership, which will maximize public values, provide public access, and improve efficiencies in public lands management. The BLM's priorities for lands management in Zone 5 are to:

- Maintain the total amount of public land in Zone 5, including lands adjacent to the Sawtooth National Forest (since these adjoining lands provide public access and improve Federal interagency efficiencies); and
- Acquire, primarily through exchange, additional high resource value lands that improve the manageability of the public lands. (Note: These acquisitions will result in disposal of lower resource value and difficult-to-manage tracts of Zone 5 public lands.)

Zone 5 lands are potentially suitable for disposal primarily by exchange; however, disposal of lands through sales and R&PP patents will also be allowed in this zone. Specific parcels within the zone may contain potentially high values for resources and land uses such as minerals, recreation, range, riparian, cultural resources, and wildlife habitat. These high-value parcels may not be suitable for disposal individually, except through exchange for equal resource value lands that are adjacent to existing public lands or that improve efficiencies in public land management. Each individual land tenure adjustment action will be required to comply with the guidelines in FLPMA, meet the Criteria for Land Ownership Adjustment (see pages 11-12), stand on its own merit through public input and review, and be in compliance with NEPA. Due to the present land ownership pattern, acquisition of public access will be a high priority in this zone.

Zone 5's Unique Considerations to Address Local Concerns:

Several local concerns are addressed through the unique characteristics of land tenure management for Zone 5. These concerns include (a) the local governments' interest in acquiring public lands to benefit the local community; (b) interagency (BLM and IDFG) and local residents' concerns about wildlife habitat fragmentation; (c) wildfire risks; (d) retention of "open space" (undeveloped landscapes) and scenic values; (e) motorized and non-motorized recreation opportunities and access; and (f) floodplain protection.

For each proposed lands transaction within Zone 5, the following factors need to be considered *in addition* to the standard Criteria for Land Ownership Adjustment (see pages 11-12).

- the local (city or county) government's interest in acquiring public lands to support infrastructure and extend community services;
- the extent to which the transaction will provide for high quality continuous habitat by retaining existing wildlife habitat and reducing the extent of fragmented wildlife habitat;
- the extent to which the transaction will reduce hazardous fuels and the risk of wildfire;
- the ability of the lands action to retain "open space" (undeveloped landscapes) and protect scenic corridors,
- the extent to which the lands action will facilitate ongoing or future motorized and non-motorized trails and other public access; and
- the extent to which the lands action will protect floodplains from development.

Furthermore, the lands proposal evaluation must consider the public values acquired and local factors addressed by acquiring State or private lands, versus the public values relinquished and local factors addressed when ownership transfers from the BLM.

The following land tenure adjustment criteria also specifically apply to Zone 5:

- Exchanges will be considered to the extent that they result in no net loss of public lands within Zone 5. The BLM's goal for this zone is to maintain the public land acreage by exchanging public land in other zones for private land in Zone 5.
- The BLM will prefer disposal through R&PP patent to local or State government entities (since these are expected to provide management of the lands over the long term versus a nonprofit organization) when the BLM's priorities, the local or State government's priorities, and the public's needs are met by the patent process.
- Disposal to private landowners through land sales will only be for small (generally less than 10 acres), isolated parcels generally left from mining patents or a resurvey by the USDI Cadastral Survey. Many of these parcels are less than an acre and are difficult to identify without researching the Master Title Plats; because of their small size, they often do not show up on land status maps. The priority will be to pool these numerous small parcels for disposal and exchange them for high resource value parcels within Zone 5.

Criteria for Land Ownership Adjustment

In addition to complying with guidelines for land tenure adjustment that are stated in FLPMA, a lands proposal must fit within the relevant zone's management strategy (see "Lands Status and Management Zones" descriptions above) and meet criteria for land ownership adjustment. The proposed action will be compared with the criteria to see if the proposal fits within the highest priorities for retention, acquisition, or disposal.

FLPMA and other Federal laws, Executive Orders, and policies suggest criteria to use when categorizing public lands for retention or disposal, and for identifying acquisition priorities. The following list of criteria is not considered all-inclusive, but represents the major activities and issues affecting lands within the planning area. These criteria are meant to streamline consideration of land tenure adjustment proposals.

These criteria will be among those considered in preparing lands reports and environmental analyses for specific land tenure adjustment proposals. Land tenure adjustments involving sales, exchanges, or R&PP patents may be permitted based on site-specific application of the adjustment criteria stated on page 12. Transfer to other public agencies will also be considered where improved management efficiency will result. All disposal actions will be consistent with the management actions and zones described in the approved Shoshone Land Use Plans Amendments.

Lands with Highest Priority for Retention or Acquisition

- Those lands specifically identified by the Shoshone-Bannock and/or Shoshone-Paiute Tribes as having special importance related to treaty and/or traditional uses and values;
- Important, crucial, or critical habitat for special status species including proposed species, listed species, and candidate species under the Endangered Species Act; State-listed species; and BLM State Director-designated sensitive species;
- Riparian areas and wetlands;
- Parcels that provide public and/or administrative access to larger blocks of public land;
- Lands with special designation or management emphasis (see category below).

Special Designation/Management Areas Where it is a High Priority to Acquire Inholdings

- Areas of Critical Environmental Concern, or lands adjacent to and important for expansion of such areas;
- National Historic Trails;
- Wild and Scenic Rivers (eligible, recommended suitable, or designated);
- Significant cultural resources and sites eligible for inclusion on the National Register of Historic Places;
- Wilderness and Wilderness Study Areas.

Areas Generally Retained, but May be Exchanged for Parcels with Higher Resource Values

- Important habitat for fish or wildlife;
- Developed recreation sites and recreation access;
- Recreation opportunities and benefits;
- Significant energy and mineral resources;
- Significant cave resources;
- Significant paleontological resources.

Areas that Are a High Priority for Disposal

- Parcels which are difficult or costly to administer (manageability and/or isolation of the parcel);
- Parcels more suitable for management by another Federal or State agency;
- Parcels of special importance to (and generally adjacent to) local communities for purposes including, but not limited to, community expansion, extended community services, or economic development.

Other Issues to be Considered Prior to any Land Tenure Adjustment Action

- To what extent the individual action will help achieve overall land ownership management objectives at the watershed level, in cooperation with State and private landowners;
- Existing legal accessibility of the land for public uses;
- Amount of public investments in facilities or improvements and the potential for recovering those investments;
- Consistency with cooperative agreements and plans or policies of other agencies.

Additional Management Direction – Land Tenure Adjustment

Summary of Management Direction: The land tenure adjustment management direction in this document amends the following land use plans: Magic MFP, Bennett Hills/Timmerman Hills MFP, Sun Valley MFP, and Monument RMP. Land tenure management zone designations are as shown on Map 3 (page 7) (also see zone definitions on pages 6-11). Each land tenure adjustment proposal will be reviewed on a case-by-case basis and evaluated to see if it meets the intent of FLPMA, the guidelines for the relevant land tenure and management zone(s), and the Criteria for Land Ownership Adjustment presented on page 12. Land tenure adjustments will seek to facilitate a watershed approach to natural resource management, in order to improve efficiencies in public lands management. The BLM will also seek to acquire high resource value lands made available by willing landowners.

Depending on the merits of each proposal, disposal of public lands will be a priority if the disposal provides opportunity to consolidate public lands, accommodate the need for community expansion, improve management in areas of high resource values, and/or resolve long-standing unauthorized uses.

Acquisition Priorities: The BLM's acquisition priorities will be to reconnect habitats within priority watersheds and to acquire other lands with high resource values. An additional acquisition priority within Zone 1 will be to seek to acquire all private and State in-holdings. Acquisitions, including easements, can be completed through exchange, Land and Water Conservation Funds (LWCF) purchases, donation, or receipts from Federal Land Transaction Facilitation Act sales or exchanges.

Land Exchanges and Sales: The BLM's first priority will always be to use land exchanges rather than land sales. Lands considered for disposal through sale must meet the intent of FLPMA, Section 203(a) (1) (i.e., be difficult and uneconomical to manage) or FLPMA, Section 203(a) (3) (i.e., meet public objectives such as community expansion and economic development).

Disposal of public lands through sale or exchange will be allowed in Zones 2, 3, 4, and 5. In Zone 5, sales to private land owners will only be allowed if the tracts are small, isolated parcels generally left from mining patents or a resurvey by the USDI cadastral survey. Public land sales will be in balance with, and, if possible, pooled with State and private land exchanges to facilitate a watershed approach and thereby improve efficiencies in public lands management. Sales will be a low priority, due to increased emphasis on land exchanges.

Approximately 45,739 acres of public lands identified for disposal as of July 25, 2000, will continue to be available for disposal (see Attachment 1, pp. 25-35). Proceeds from the sale or exchange of these public lands may be used to purchase additional public lands, as provided for in the Federal Land Transaction Facilitation Act.

State Land Exchanges: State land exchanges will be in balance with, and, if possible, pooled with private land exchanges to facilitate a watershed approach and thereby improve efficiencies in public lands management.

Private Land Exchanges: Private land exchanges will be in balance with, and, if possible, pooled with State land exchanges to facilitate a watershed approach in order to improve efficiencies in public land management.

Desert Land Entry (DLE) Act/ Carey Act Applications and Lands Transfer: No new DLE or Carey Act applications will be accepted. Current Desert Land Entry Act and Carey Act applications will be

processed, and lands meeting the criteria of the Acts will be disposed of. The following are identified as current applications:

Current Desert Land Entry (DLE) Applications: IDI 29776, 29777 and 29782 between Wendell and Gooding. IDI 27342, 27343, 27344, 27345, 27406, 27443, 27444, 27472, 27855, 27857, 27858, 27859, 28096, 28144 and 28145 in the Hidden Valley between Dietrich and Kimama and below State Highway 24.

Current Carey Act Applications: IDI 9897, 9483 and 9487. (These overlap with the same DLE applicants between Wendell and Gooding.)

Recreation and Public Purposes (R&PP) Act Leases and Patents: R&PP leases and patents are allowed in Zones 2, 3, 4, and 5. Proposed patents in Zone 5 must meet an additional criterion for that zone. In Zone 5 the BLM will prefer disposal through R&PP patent to local or State government entities (since these are expected to provide management of the lands over the long term, versus a non-profit organization) when the BLM's priorities, the local or State government's priorities, and the public's needs are met by the patent process.

Aquifer Recharge Sites (including flood control sites which are ancillary benefits to the aquifer recharge program): The existing recharge site authorized in Zone 1 will be retained in public ownership and continue to be authorized through the signed Cooperative Agreement. The existing flood control site (ancillary benefit to the aquifer recharge program) authorized in Zone 2 through the signed Cooperative Agreement, and the aquifer recharge site within Zone 2 that has been approved by the BLM through a signed Decision Record, will be made available for acquisition through exchange or purchase with the State of Idaho or other public entity. The BLM will also allow the State or other public entities to exchange or purchase future recharge sites identified within Zones 2 or 4, if the sites are approved through the NEPA process.

Communication Sites: The communication sites within the planning area that have been approved by the BLM through right-of-way grants will be made available for acquisition through exchange with the State of Idaho. The BLM will allow the State to exchange for entire communication site complexes and any other additional area needed for ancillary support for the sites identified in Zones 2-5, if the sites are approved through the NEPA process. Ancillary support for existing and future communication sites (e.g., power lines, access roads, etc.) will not be authorized on public lands once the sites are transferred to the State. Any transfer of public lands will be subject to all valid existing rights, including existing rights-of-way.

Isolated Wildlife Tract Program: Continue to manage the Isolated Wildlife Tract Program on existing lands, and look for opportunities in partnership with the Idaho Department of Fish and Game (IDFG) to exchange the current properties for higher value properties that are adjacent to BLM lands, have equal or higher wildlife values, and help reconnect fragmented habitats within priority watersheds. As isolated lands are disposed of, the program will be reduced accordingly. Continue the present cooperative agreement with IDFG.

Future Land Use Permits and Resolution of Unauthorized Use (e.g., farming, equipment storage, material disposal, fences): While waiting for land tenure actions to be completed, new land use permits, leases, or agreements will not be allowed on the public lands being considered for disposal. In areas not identified for disposal (e.g., Zone 1), consideration of new land use permits, leases, or agreements will be a low priority.

Short-term authorizations or permits to cross BLM lands for the sole benefit of private farming practices (such as dry or wet pivot lines) will not be approved. No form of waste water application will be approved. A FLPMA right-of-way will be available to provide long-term authorization for actions such as water main lines and power lines grants, if needed to service private agricultural lands.

Resolution of long-term unauthorized uses through land tenure adjustment will be equal in priority to retaining or acquiring high resource value lands. Existing permits, leases, or agreements that currently authorize known trespass will be retired within 18 months of the date the permit, lease, or agreement expires, and all agreed-to rehabilitation will occur to the satisfaction of the authorized officer within 36 months of the date the permit, lease, or agreement expires.

Public lands with unauthorized uses that are temporarily authorized by existing land use permits, leases, or agreements will be evaluated for disposal in a “pooled lands” approach with the assistance of local county governments, in order to meet the needs of all land owners and the public. Isolated BLM parcels (isolated from other BLM properties or isolated due to structures like highways or major irrigation canals) may be sold.

New cases of unauthorized use (or situations the BLM becomes aware of after these amendments are approved) will be resolved by current laws, regulations, and priorities. In the future, no new land use permits, leases, or agreements will be authorized to validate unauthorized use.

Water Rights: Current Idaho water law and BLM water rights policy will be adhered to. Adherence to Idaho water law will be a condition of use on all existing, new, or renewed farming permits, leases, or agreements. When an existing permit is renewed, current Idaho BLM’s State-wide policy is that any privately-held water right place of water use (POU) on public land shall either be removed from public land, or be transferred to the United States through the Bureau of Land Management. It is also BLM’s policy that a privately-owned water right with a point of diversion (POD) on privately-owned property, but one or more places of water use on public land, shall be split and transferred to the United States, in proportion to the amount of water used on public land to the total water used on all land, both private and public; this transfer will be made for the duration of time the permitted use of public lands is authorized.

Private/Public Land Boundary Adjustments Within and Adjacent to Zone 2: Public lands within ½ -mile of either side of the Zone 2 boundary will be considered potentially suitable for disposal primarily by exchange (and secondarily by sale or R&PP patent), *unless* that ½-mile extends into a Zone 1 (retention) area. Private/public land boundary adjustments within ½-mile of the Zone 2 boundary will be a priority if the land tenure adjustment provides opportunity to consolidate public lands, accommodate the need for community expansion, improve management in areas of high resource values, and/or resolve long-standing unauthorized uses.

Split Estate Mineral Values (private surface owner/ BLM subsurface owner): The exchange or sale of BLM sub-surface minerals for private surface lands will be allowed in Zones 2, 3, 4, and 5. The BLM will seek to reduce or eliminate the split mineral estate whenever the opportunity arises. The priority will be to identify groups of landowners interested in acquiring their sub-surface mineral values, and to pool these values in order to acquire high resource value parcels through sale or exchange. Future lands transactions will follow current policy on transfer of sub-surface mineral values (current policy is to not split estates when completing a land tenure transaction).

Priorities for Consolidating Land Ownership: First priority will always be to use land exchanges rather than land sales. Priority is to retain and acquire additional high resource value lands made available by a willing land owner, while considering opportunities to consolidate lands. High resource

value lands will be retained unless equal or higher resource value lands are available. A priority is also to reconnect habitats within priority watersheds.

Zone 5 Considerations: The following definitions apply for the purposes of these amendments:

“Open space” is defined as a primitive and peaceful area that provides solitude, and where the public lands user will tread lightly and leave no trace of having been there. The “open space” definition accommodates all approved permits, developments, land uses, and activities at the time a land tenure adjustment occurs.

“Local governments” include Blaine County and the cities of Bellevue, Hailey, Ketchum and Sun Valley, Idaho.

Lands to Support Local Needs - “Reasonably necessary” sized parcels of public land may be made available for disposal through the R&PP Act, preferably directly to local governments, to support local needs for community infrastructure and extended services. Community needs will be accommodated to the greatest extent possible.

“Open Space” Concept - In Zone 5 the following will be emphasized to promote open space: Pool numerous small, low public value parcels and acquire through exchange high resource priority parcels to complement the BLM and local governments’ Master and/or Comprehensive Plans.

Acquisition of Access: Knowing that limited resources are available to acquire access through individual actions (unless access is acquired as a component of another proposed transaction), future access needs and priorities will be coordinated with the Shoshone-Bannock and Shoshone-Paiute Tribes, IDFG, and local governments to ensure resource values are evaluated along with public needs.

Existing public access will be retained.

When evaluating proposals for acquisition of access, the BLM will seek to address concerns about over-development, over-use, and habitat fragmentation. New points of access will seek to protect both the acquired access area and the resources accessed by that area (e.g., a parking area next to a trailhead; a pull-off next to a fishing hole). The BLM will seek to balance acquisition of legal public and administrative access.

When developing or evaluating land tenure adjustment proposals, the BLM will seek to acquire legal public or administrative access and prevent relinquishment of such access. The emphasis on initiating lands actions in order to acquire access (versus completing other types of lands transactions) varies by zone:

- Zone 1: Public access will be considered in all land tenure actions.
- Zone 2: Public access will be considered in all land tenure actions.
- Zone 3: Acquisition of public access will be a high priority.
- Zone 4: Acquisition of public access will be a low priority.
- Zone 5: Acquisition of public access will be a high priority.

Forest Resources: Small, isolated, and hard to manage public lands in the timber base will be considered for disposal if they meet the amendments’ criteria for disposal (zone definition and Criteria for Land Ownership Adjustment (pages 11-12)).

ACEC Designations

The Federal Land Policy Management Act (FLPMA) defines an ACEC as an area “...*within the public lands where special management attention is required (when such areas are developed or used or where no development is required) to protect and prevent irreparable damage to important historic, cultural, or scenic values, fish and wildlife resources or other natural systems or processes, or to protect life and safety from natural hazards (43 U.S.C. § 1702 (a)).*” The Shoshone Field Office presently has five designated ACECs (see Map 4, p. 18). The Amendments designate three new ACECs (King Hill Creek, McKinney Butte, and Tee-Maze) totaling approximately 17,026 acres (see Maps 4 -7 on pages 18 and 21-23). These ACECs satisfy relevance and importance criteria listed in 43 CFR 1610.7-2 and BLM Manual Section 1613, *and also* have a need for special management of the identified resources and values.

Relevance is based on the presence of a significant historic, cultural, or scenic value; fish or wildlife resource or other natural system or process; or natural hazard. All three ACECs meet relevance criteria and also have substantial significance and values that meet one or more “importance” criteria:

- Has more than locally significant qualities which give it special worth, consequence, meaning, distinctiveness, or cause for concern, especially compared to any similar resource.
- Has qualities or circumstances that make it fragile, sensitive, rare, irreplaceable, exemplary, unique, endangered, threatened, or vulnerable to adverse change.
- Has been recognized as warranting protection in order to satisfy national priority concerns or to carry out the mandates of FLPMA.
- Has qualities which warrant highlighting in order to satisfy public or management concerns about safety and public welfare.
- Poses a significant threat to human life and safety or to property.

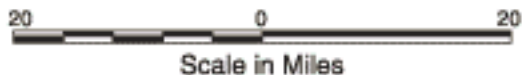
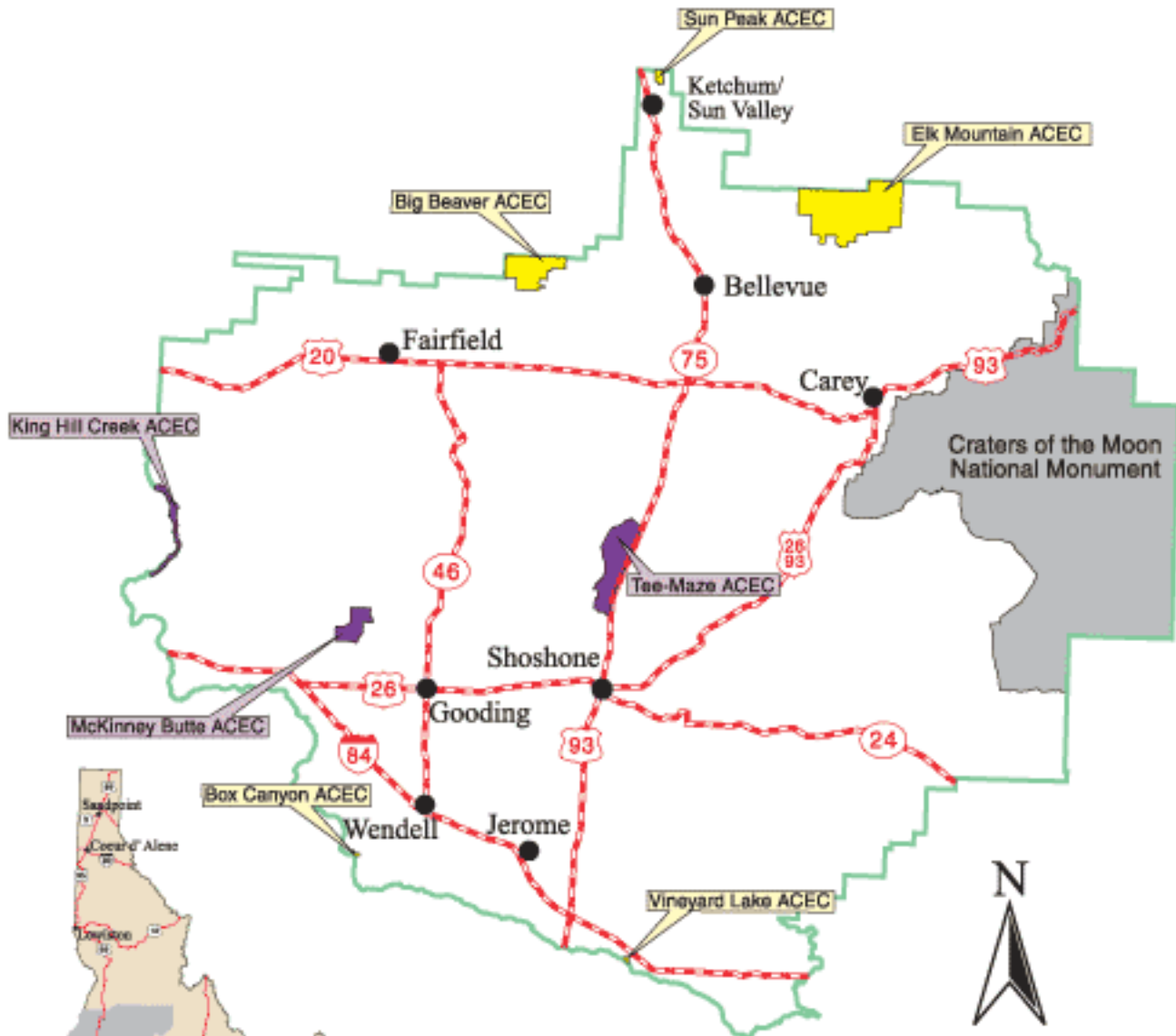
These three new ACECs are also designated as Research Natural Areas (RNAs), since they contain natural resource values of scientific interest and will be managed primarily for research and educational purposes.

Management Applicable to all Three New ACECs

Any future land uses or activities approved within an ACEC must not impair the values, resources, systems, and/or processes for which the ACEC was designated.

Off-road vehicle use (cross-country use) is allowed within areas with a “closed” or “limited” off-highway vehicle use designation under these circumstances: (a) any military, fire, emergency, or law enforcement vehicle while being used for emergency purposes; (b) any vehicle whose use is expressly authorized by the authorized officer or otherwise officially approved; (c) vehicles in official use (43 CFR 8340.0-7); (d) vehicles being used by members or representatives of the Shoshone-Bannock Tribes or Shoshone-Paiute Tribes to access traditional use areas of importance to the Tribes; and (e) vehicles being used by members of the Shoshone-Bannock Tribes to exercise their tribally reserved treaty rights.

MAP 4 NEW AND EXISTING ACECs IN THE SHOSHONE FIELD OFFICE



Land management actions would only apply to public lands administered by the Bureau of Land Management.

Even though every effort is made to depict the road network and other features as accurately as possible, the Bureau of Land Management (BLM) cannot guarantee road classification and/or positional accuracy of roads and other features in all cases. No warranty is made by the BLM for use of these data for purposes not intended by the BLM.

Map Legend

Shoshone Field Office Boundary	
Existing ACEC*	
New ACEC*	
Existing ACEC Name.....	
New ACEC Name.....	
Highway: Interstate; U.S.; State..	
*Area of Critical Environmental Concern	

King Hill Creek ACEC/RNA

Relevance: Extremely deep, vertical-walled canyon with scenic vegetation and geology. Genetically pure Interior redband trout, a BLM sensitive species. Near-pristine low elevation riparian area.

Importance: Isolated, with spectacular scenery. Important source of Interior redband trout for re-introduction elsewhere. Important as a riparian reference area.

Designate 10 miles (approximately 2,500 acres) of King Hill Creek as an ACEC/RNA, including approximately 840 acres managed by the Four Rivers Field Office - BLM (see Map 5, p. 21). Implement the following actions to highlight management of the scenic, fisheries, and riparian values within the ACEC: (a) Close all aquatic habitat in the King Hill Creek ACEC/RNA to introduction of genetic strains of trout which are not native to the King Hill Creek watershed. Petition the Idaho Department of Fish and Game to prohibit the introduction of genetic strains of trout into King Hill Creek which are not native to the King Hill Creek watershed. (b) Prevent noxious weed invasion by treating public lands adjacent to the ACEC and promptly treating existing and new weed infestations within the ACEC. (c) Exclude the ACEC from new land use authorizations (e.g., rights-of-way, R&PP Act leases, land use permits). (d) Close the ACEC to mineral material sales and free use permits. (e) Designate the ACEC/RNA as “closed” to motorized vehicle use. (f) Designate the ACEC as VRM Class I. (g) Authorize only those actions which maintain or improve desirable habitat conditions for redband trout.

McKinney Butte ACEC/RNA

Relevance: Outstanding cave scenery and examples of volcanism and lava tube formation. Significant hibernating populations of two bat species, both BLM sensitive species. Diverse cave-adapted insect community. Known paleontological resources, including remains of extinct or extirpated species.

Importance: Unique variety, abundance, and undisturbed character of cave features. Hibernation habitat for significant numbers of a BLM sensitive species (Townsend’s big-eared bat). Unusual plant and invertebrate communities. High potential of additional fossil resources.

Designate 3,764 acres as the McKinney Butte ACEC/RNA to protect significant subsurface resources and focus use of the area on research and education (see Map 6, p. 22). Implement the following actions to highlight management of the identified scenic, wildlife, and cave values: (a) Prepare an activity plan for the McKinney Butte ACEC/RNA. The plan will incorporate limitations on any activity that may adversely impact physical, biological, or cultural resources; fire suppression guidelines; annual reporting procedures; physical protection measures; regulatory and/or interpretive signs; law enforcement; and Limits of Acceptable Change concepts to protect cave resource values. The Limits of Acceptable Change will be cave-specific and developed in consultation with affected user groups. (b) Continue to follow the provisions and guidance stated in the Upper Snake River District Cave Management Plan (USDI-BLM, 1999). [Note: The Cave Management Plan directs monitoring of cave resources and impacts. It includes direction to conduct comprehensive inventories of each cave’s physical and structural makeup and biological life. Where needed to protect cave resources, special management actions will be implemented such as surface vehicular closures, marking travel routes through caves, installing bat gates, and requiring permits for visitor use. Law enforcement and public education strategies and actions are also discussed.] (c) Restrict access to the cave(s) containing bats during winter hibernation periods (October 15 through May 1), except for approved research or BLM management actions. Prohibit access to caves which provide maternity roosts from June 1 through August 31. (d) Close the ACEC to mineral

material sales and free use permits. (e) Limit vehicle use to designated and signed roads and trails. (f) Do not allow new land use authorizations (e.g., rights of way, R&PP leases, land use permits). (g) Designate a total of 13 caves as significant.

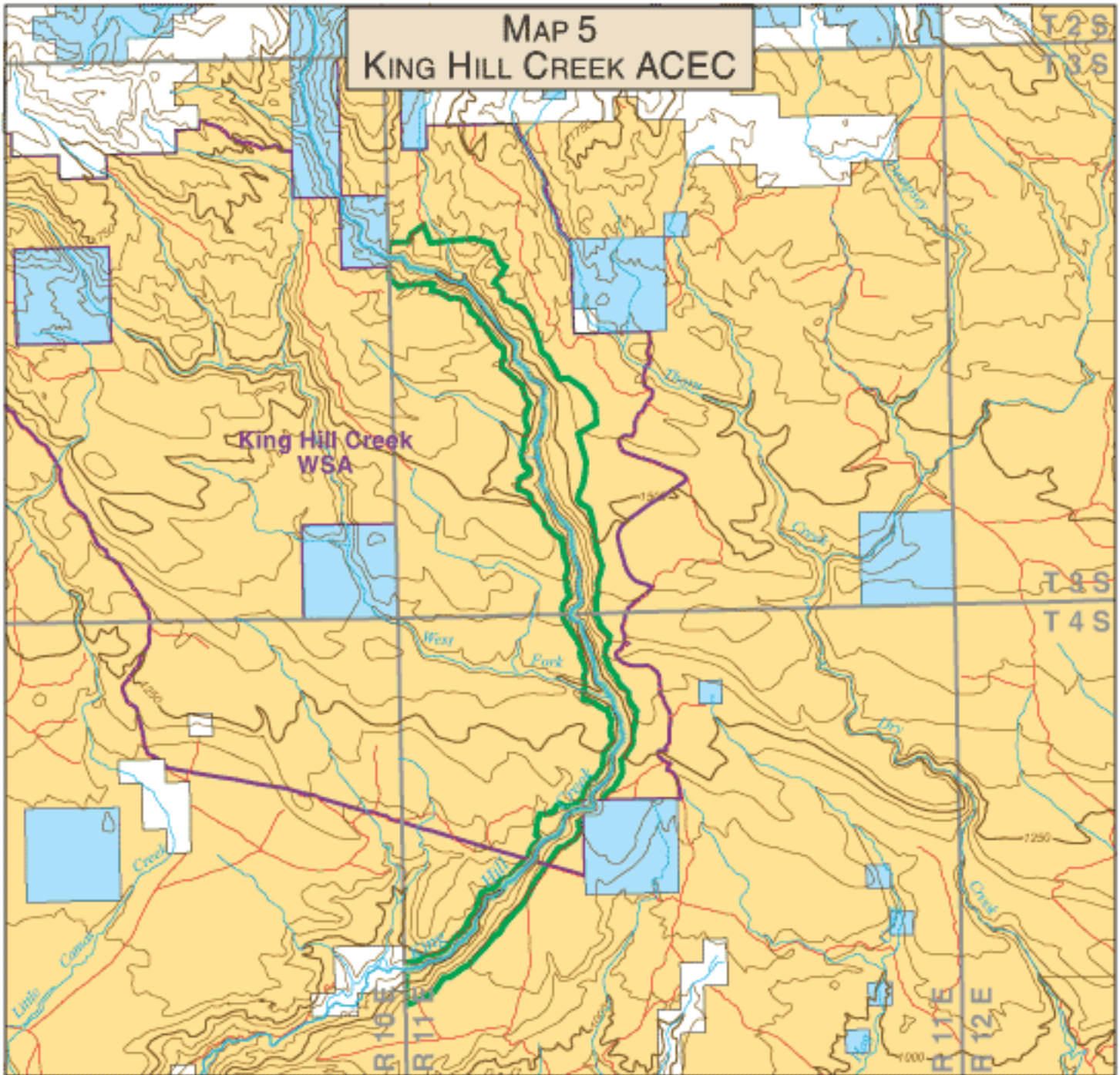
Tee-Maze ACEC/RNA

Relevance: Outstanding cave scenery and examples of volcanism and lava tube formation. Significant hibernating populations of two bat species, both BLM sensitive species. Diverse cave-adapted insect community. Known paleontological resources, including remains of extinct or extirpated species.

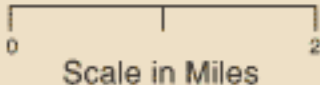
Importance: Unique variety, abundance, and undisturbed character of cave features. Hibernation habitat for significant numbers of a BLM sensitive species (Townsend's big-eared bat). Unusual plant and invertebrate communities. High potential of additional fossil resources.

Designate 10,762 acres as the Tee-Maze ACEC/RNA to protect significant subsurface resources and focus use of the area on research and education (see Map 7, p. 23). Implement the following actions to highlight management of the identified scenic, wildlife, and cave values: (a) Prepare an activity plan for the Tee-Maze ACEC/RNA. The plan will incorporate limitations on any activity that may adversely impact physical, biological, or cultural resources; fire suppression guidelines; annual reporting procedures; physical protection measures; regulatory and/or interpretive signs; law enforcement; and Limits of Acceptable Change concepts to protect cave resource values. The Limits of Acceptable Change will be cave-specific and developed in consultation with affected user groups. (b) Continue to follow the provisions and guidance stated in the Upper Snake River District Cave Management Plan (USDI-BLM, 1999). [**Note:** The Cave Management Plan directs monitoring of cave resources and impacts. It includes direction to conduct comprehensive inventories of each cave's physical and structural makeup and biological life. Where needed to protect cave resources, special management actions will be implemented such as surface vehicular closures, marking travel routes through caves, installing bat gates, and requiring permits for visitor use. Law enforcement and public education strategies and actions are also discussed.] (c) Restrict access to the cave(s) containing bats during winter hibernation periods (October 15 through May 1), except for approved research or BLM management actions. Prohibit access to caves which provide maternity roosts from June 1 through August 31. (d) Limit mineral material sales and free use permits to existing sites and public lands adjacent to State Highway 75. (e) Limit vehicle use to designated and signed roads and trails, except for (1) allowing the existing stackable blocky lava rock permit holder to continue to have cross-country access to his permitted area for the duration of his permit, and (2) allowing cross-country access within the Mammoth Cave Common Use Area. (f) Do not allow new land use authorizations (e.g., rights of way, R&PP leases, land use permits). (g) Designate a total of 12 caves as significant.

MAP 5 KING HILL CREEK ACEC



CONTOUR INTERVAL 50 METERS



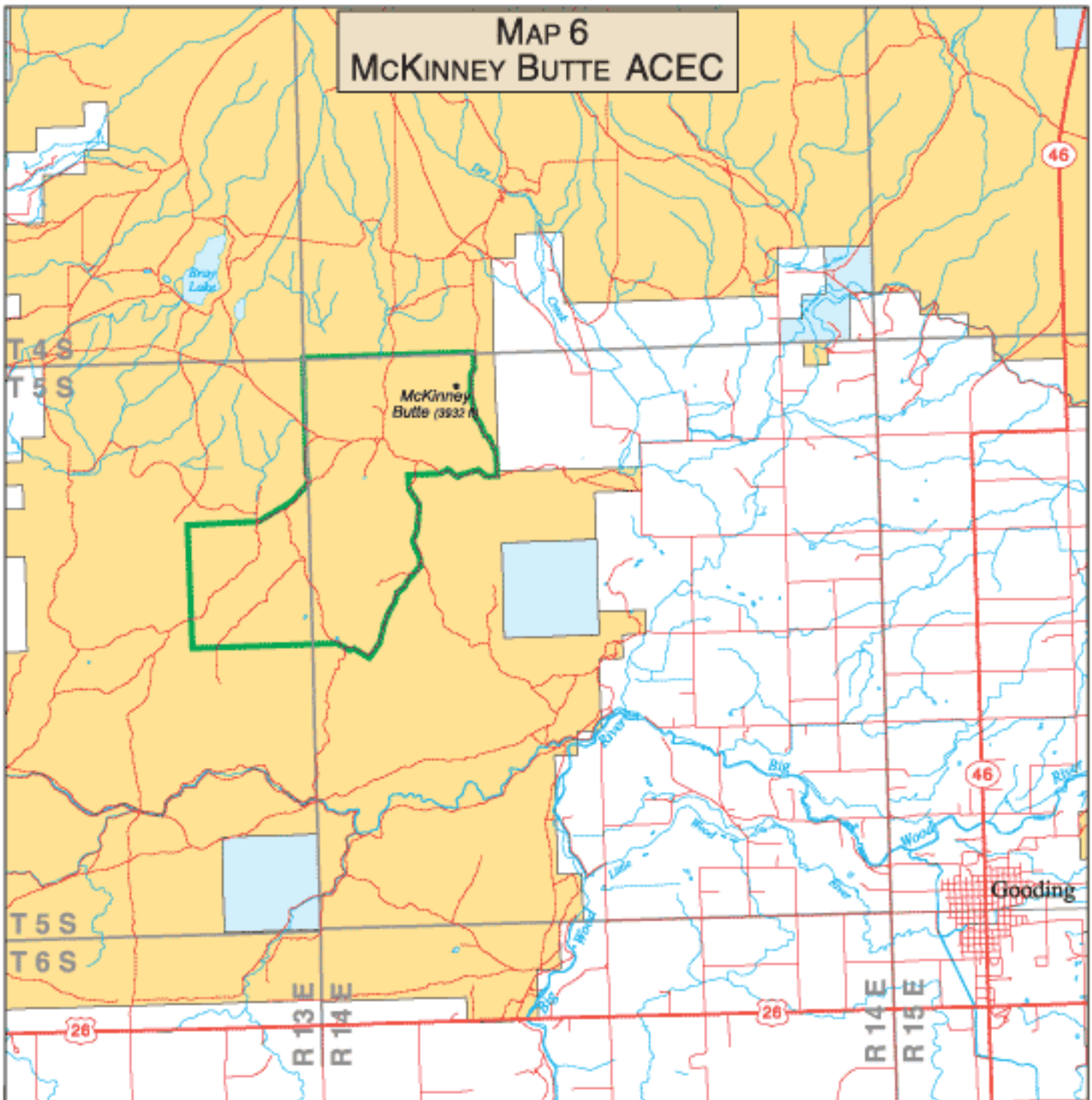
Map Legend

- ACEC Boundary.....
- Roads or Trails.....
- Streams.....
- Contours: index; intermediate
- Bureau of Land Management
- Private Lands.....
- State Lands.....
- Wilderness Study Area.....
- Eligible for Wild and Scenic
- River Study.....

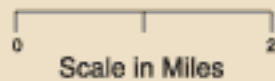
Base map information compiled from 1:100,000 scale U.S. Geological Survey (USGS) Digital Line Graphs. Land Status derived from BLM's Geographic Coordinate Data Base.

Even though every effort is made to depict the road network and other features as accurately as possible, the Bureau of Land Management (BLM) cannot guarantee road classification and/or positional accuracy of roads and other features in all cases. No warranty is made by the BLM for use of this data for purposes not intended by the BLM. The official land records should be checked for up-to-date status on any specific tract of land.

MAP 6 MCKINNEY BUTTE ACEC



Area of Interest

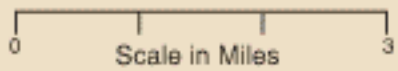
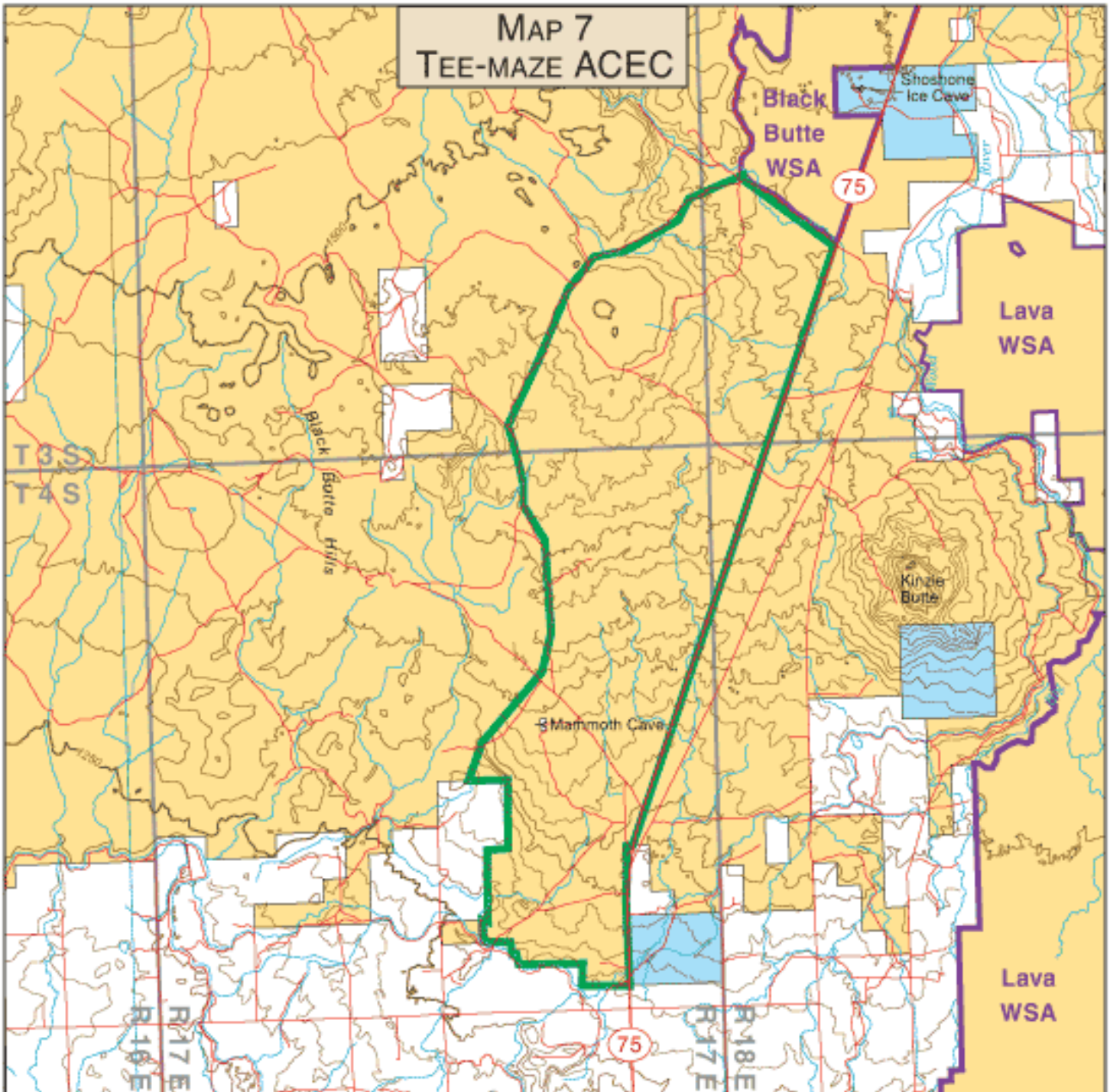


Map Legend

- ACEC Boundary.....
- Roads or Trails.....
- Streams.....
- Bureau of Land Management
- Private Lands.....
- State Lands.....

Even though every effort is made to depict the road network and other features as accurately as possible, the Bureau of Land Management (BLM) cannot guarantee road classification and/or positional accuracy of roads and other features in all cases. No warranty is made by the BLM for use of this data for purposes not intended by the BLM. The official land records should be checked for up-to-date status on any specific tract of land.

MAP 7 TEE-MAZE ACEC



CONTOUR INTERVAL 50 METERS
SUPPLEMENTARY CONTOUR INTERVAL 10 METERS



Map Legend

- ACEC Boundary.....
- Roads or Trails.....
- Streams.....
- Contours: index; intermediate; supplementary.....
- Bureau of Land Management.....
- Private Lands.....
- State Lands.....
- Wilderness Study Area.....

Base map information compiled from 1:100,000 scale U.S. Geological Survey (USGS) Digital Line Graphs. Land Status derived from BLM's Geographic Coordinate Data Base.

Even though every effort is made to depict the road network and other features as accurately as possible, the Bureau of Land Management (BLM) cannot guarantee road classification and/or positional accuracy of roads and other features in all cases. No warranty is made by the BLM for use of this data for purposes not intended by the BLM. The official land records should be checked for up-to-date status on any specific tract of land.

Amendments Monitoring and Evaluation

The monitoring plan described below applies to the Shoshone Land Use Plans Amendments. The following steps will be taken to monitor implementation of the approved amendments through an annual and five-year review process.

Annually, the BLM will complete these actions:

- Identify the Amendments' management direction accomplished and the management decisions that are planned for implementation during the coming year. Notify public land users of these accomplishments and plans by posting the results of the monitoring on the Shoshone Field Office's homepage.

Land Tenure

- Document lands program actions that were implemented during the past year.
- Update the information in Attachment 1 (lands currently available for disposal under the Federal Land Transaction Facilitation Act) and the land status and lands management zones maps to reflect any land tenure adjustments that have taken place during the preceding year.
- Identify land tenure actions that are planned for implementation.

ACECS (including the five existing ACECs)

- Document all actions occurring within or pertaining to the existing and newly designated ACECs during the past year.
- Identify management direction that is expected to be implemented during the coming year.
- Evaluate the Amendments' implementation by addressing at least the following questions about the direction that was implemented:

Was the specified activity carried out as described and authorized? If not, why wasn't it?
Was the specified activity successful in achieving its objective?

Every five years, the annual monitoring information will be evaluated along with the Amendments and all interim reports. Questions to be answered will include, but are not limited to, the following:

Are actions outlined in the Amendments being implemented?
Are the desired outcomes being achieved?
Do decisions continue to be correct and proper over time?
Are there new data or analyses that affect the planning decisions or NEPA analysis?
Are there new legal mandates not addressed in the land use plans or amendments?
Are any modifications (maintenance, amendment, or revision) needed to the plans?

Attachment 1

Lands Identified for Potential Disposal under the Federal Land Transaction Facilitation Act (FLTFA)

(Disposal Lands as of July 25, 2000)

Approximately 49,972.86 acres were identified for potential disposal in the Shoshone Field Office's existing land use plans as of July 25, 2000. Some of those lands are no longer available for disposal (such as lands within the recently expanded Craters of the Moon National Monument) or do not meet the Amendments' criteria for land tenure adjustment (see pages 11-12); these lands (approximately 4,233.77 acres) are being retained in public ownership. The tracts listed in this attachment to the Amendments (approximately 45,739.09 acres) were identified for potential disposal as of July 25, 2000, and may therefore be considered for disposal under the Federal Land Transaction Facilitation Act (FLTFA). (**Note:** This attachment identifies the legal description of the tracts; their approximate locations are displayed on Map 2, page 3) Under FLTFA, the monies received from sales or exchanges of lands identified for disposal in land use plans as of July 25, 2000, are retained in an account and can be used by the BLM and other Federal agencies to purchase additional lands; they are not deposited in the General Treasury. (**Note:** The lands identified in this attachment are not the only public lands that could be considered for disposal under the Amendments. However, these are the only lands that could be disposed of under the Federal Land Transaction Facilitation Act.)

T. 9 S., R. 17 E., Boise Meridian

Section 14: SE, N2SW (portion N of I-84), S2NE, S2S2NW, NWSWNW, SWNESWNW
Section 15: SW, NESE, NWSE, E2SWSE, SENE, S2SWNE, S2S2NW, W2SWNW, NWSWNW,
W2SWSSENW
Section 20: N2SE
Section 21: S2, NE, E2NW, SWNW
Section 22: W2, W2SWSE, W2E2SWSE
Section 28: NENW, N2NE, SENE

Containing Approximately 1,957.50 acres

T. 9 S., R. 18 E., Boise Meridian

Section 16: NENE
Section 34: SWNW, N2SW Portions south of Interstate 84

Containing Approximately 160 acres

T. 9 S., R. 19 E., Boise Meridian
Section 10: SWNW, W2SW
Section 11: S2NWSE, S2NESW, S2S2SWSW
Section 12: W2SESWSE
Section 20: S2SW
Section 25: W2W2NW
Section 26: E2SENE
Section 29: N2NW
Section 30: Lot 1 (21.50), NENW
Containing Approximately 456.50 acres

T. 9 S., R. 20 E., Boise Meridian
Section 8: Lots 2 (10.02), 3 (30.07), S2SW, W2SE
Section 24: S2SE
Section 25: N2NE, NENW, S2NW, NWSE
Section 35: S2SE
Containing Approximately 600.09 acres

T. 9 S., R. 21 E., Boise Meridian
Section 19: Lot 4 (41.55), SWNE, SESW, E2NESW, E2W2NESW
Containing Approximately 151.55 acres

T. 8 S., R. 18 E., Boise Meridian
Section 30: SENW
Containing Approximately 40 acres

T. 8 S., R. 21 E., Boise Meridian
Section 3: S2, S2N2
Section 4: SE
Section 5: SENE
Section 10: N2NW
Section 11: S2SE
Section 12: E2NW, W2SW
Section 21: E2NW
Section 24: SENE
Section 27: W2W2, E2SW
Section 28: E2NW, NESW
Section 32: SWSE, portion of NWSE (20 ac.)
Containing Approximately 1,540 acres

T. 8 S., R. 22 E., Boise Meridian
Section 4: S2S2
Section 8: NE
Section 19: Lots 2 (43.61), 3 (43.63), 4 (43.65), SENW, SESE
Section 20: SW, S2NW
Containing Approximately 770.89 acres

T. 7 S., R. 23 E., Boise Meridian
 Section 5: Lot 3 (25.97), SENW
 Containing Approximately 65.97 acres

T. 7 S., R. 22 E., Boise Meridian
 Section 26: N2, SW
 Section 27: ALL
 Section 28: ALL
 Section 33: NE
 Section 34: ALL
 Section 35: ALL
 Containing Approximately 3,200 acres

T. 7 S., R. 21 E., Boise Meridian
 Section 3: Lots 1 (19.95), 2 (20.05), 3 (20.15), 4 (20.25), S2N2, S2
 Section 4: Lots 1 (20.28), 2 (20.26), S2NE, N2SE
 Section 6: Lot 7 (41.30)
 Section 10: ALL
 Section 11: S2
 Section 12: S2SW
 Section 13: N2NW
 Section 14: ALL
 Section 23: N2, N2S2
 Section 33: S2
 Section 34: S2S2, NWNW
 Containing Approximately 3,562.24 acres

T. 7 S., R. 20 E., Boise Meridian
 Section 1: SESE
 Containing Approximately 40 acres

T. 7 S., R. 19 E., Boise Meridian
 Section 2: Lot 2 (19.39), SWNE
 Containing Approximately 59.39 acres

T. 7 S., R. 18 E., Boise Meridian
 Section 10: SENW, SWNE, N2SE, NESW
 Section 11: NWSW
 Section 34: SW
 Containing Approximately 400 acres

T. 7 S. R. 16 E., Boise Meridian
 Section 9: SE, S2NE
 Section 14: NWSW
 Containing Approximately 280 acres

T. 7 S., R., 14 E., Boise Meridian
Section 3: S2SW
Containing Approximately 80 acres

T. 6 S., R. 13 E., Boise Meridian
Section 14: NWNE
Containing Approximately 40 acres

T. 6 S., R. 15 E., Boise Meridian
Section 12: SESW
Section 13: E2NW
Section 20: SENE, N2SE, SESE
Section 21: SW, N2SE, SESE
Section 22: N2SW, SWSW
Containing Approximately 680 acres

T. 6 S., R. 16 E., Boise Meridian
Section 5: Lots 2 (47.89), 3 (48.19), 4 (48.51)
Containing Approximately 144.59 acres

T. 6 S., R. 17 E., Boise Meridian
Section 2: W2SWSW
Section 12: Portion of Lot 3 (5.0 +/-)
Containing Approximately 25 acres

T. 6 S., R. 18 E., Boise Meridian
Section 4: W2SE
Section 8: Portions south of road in N2SW, NWSE, and S2SE (160 +/-)
Section 9: Portion south of road in SWSWSW (5 +/-)
Section 11: NESW
Section 21: NWNE
Containing Approximately 365 acres

T. 6 S., R. 19 E., Boise Meridian
Section 8: E2NW, W2NE, NENE
Section 9: N2NE
Section 11: NENE
Section 15: SWNW
Section 22: NWNE
Containing Approximately 400 acres

T. 6 S., R. 21 E., Boise Meridian
Section 17: E2NE, NESE
Section 19: Lots 6 (40.00), 7 (40.00), 8 (40.00), 9 (16.21), 10 (16.28), 11 (40.00), 12 (40.00), S2NE, N2SE
Section 20: NENW, S2NW, N2SW, E2SE
Section 28: S2
Section 29: E2E2, NESW
Section 30: Lots 2 (40.00), 3 (16.35)
Section 31: SENE, E2SE
Section 32: S2, S2NW, NENW
Section 35: SENW, E2SW
Containing Approximately 2,048.84 acres

- T. 6 S., R. 22 E., Boise Meridian
 Section 26: E2SE, SW
 Section 29: N2SW, SWSW
 Section 30: Lot 6 (40.00), S2NE, SE
 Section 33: Lots 1 (43.22), 2 (43.12), N2SE
 Section 35: Lots 1 (43.96), 3 (43.96), 4 (43.94), NW, E2NE, NESE, N2SW
 Containing Approximately 1,298.20 acres
- T. 6 S., R. 23 E., Boise Meridian
 Section 28: E2NW, S2NE, NWNE, W2NENE, SWSE
 Section 34: E2
 Section 35: NW, S2NE, N2S2, SWSW
 Containing Approximately 1,020 acres
- T. 6 S., R. 24 E., Boise Meridian
 Section 31: SESE
 Containing Approximately 40 acres
- T. 5 S., R. 12 E., Boise Meridian
 Section 2: E2SE
 Section 34: SESE
 Containing Approximately 120 acres
- T. 5 S., R. 13 E., Boise Meridian
 Section 3: SWSW
 Containing Approximately 40 acres
- T. 5 S., R. 15 E., Boise Meridian
 Section 1: Lot 2 (40.35), SWNE
 Section 4: NWSW, NWSW
 Section 13: SWNW
 Section 14: SENE
 Section 21: SESE
 Section 22: S2NW, SWNE, W2SE, SW
 Section 23: E2E2, SWSE, S2SW
 Section 24: W2W2
 Section 25: S2NW
 Section 26: N2NW, SENW, NE, N2SE, NESW
 Section 27: NW, N2NE, SWNE, NWSW
 Section 28: E2NE, SE, E2SW
 Section 33: NW, N2NE, SWNE
 Containing Approximately 2,480.35 acres

T. 5 S., R. 16 E., Boise Meridian
 Section 13: NENE
 Section 32: W2NW, NESW, S2NE, SE, E2SW
 Containing Approximately 480 acres

T. 5 S., R. 17 E., Boise Meridian
 Section 15: SWNW
 Section 18: Lot 1 (46.04), NENW
 Containing Approximately 126.04 acres

T. 5 S., R. 18 E., Boise Meridian
 Section 33: Portion of S2SW (55+/-)
 Section 34: NWSW, SESW
 Containing Approximately 135 acres

T. 4 S., R. 16 E., Boise Meridian
 Section 25: SWSW
 Section 28: NENE, NESW
 Section 30: NWSE, NESW
 Containing Approximately 200 acres

T. 4 S., R. 17 E., Boise Meridian
 Section 28: W2SW
 Containing Approximately 80 acres

T. 4 S., R. 19 E., Boise Meridian
 Section 25: Lot 5 (41.04)
 Containing Approximately 41.04 acres

T. 4 S., R. 20 E., Boise Meridian
 Section 17: SENE
 Containing Approximately 40 acres

T. 3 S., R. 18 E., Boise Meridian
 Section 29: Lot 1 (40.64), NWNE
 Containing Approximately 80.64 acres

T. 2 S., R. 21 E., Boise Meridian
 Section 31: Lot 1 (40.52)
 Containing Approximately 40.52 acres

T. 1 S., R. 21 E., Boise Meridian

Section 4: Lots 1 (46.07), 2 (46.24), 3 (46.41), 4 (46.58), SESE

Section 5: Lot 1 (47.05)

Section 17: W2W2, NENW

Section 18: Lots 1 (45.44), 2 (45.44), SENW, S2NE, N2SE, SESE, NESW

Containing Approximately 843.23 acres

T. 1 S., R. 12 E., Boise Meridian

Section 5: Lots 2 (26.64), 3 (26.54), 4 (26.44), SENW

Section 6: Lots 1 (26.34), 2 (26.13), 3 (26.04), 4 (26.74), 5 (38.67), SENW, S2NE, SE, E2SW

Section 7: N2NE

Containing Approximately 703.54 acres

T. 1 S., R. 11 E., Boise Meridian

Section 1: Lot 4 (24.36), SWNW

Section 2: Lots 1 (23.90), 2 (23.49), 3 (23.09), 4 (22.68), S2NW, N2SW, NESE

Section 8: E2E2, SWSE

Section 9: W2W2

Section 16: E2SE, NWSE, N2SW

Section 17: N2, N2S2

Section 18: Lots 1 (35.90), 2 (35.79), E2NW, W2NE, SENE, N2SE

Section 21: E2NE, NESE

Section 22: N2S2, SESE

Section 27: E2NE

Containing Approximately 2,149.21 acres

T. 1 S., R. 17 E., Boise Meridian

Section 35: SENW, SWNE, NWSE, NESW, S2SW

Containing Approximately 240 acres

T. 1 N., R. 23 E., Boise Meridian

Section 6: Lot 7 (41.33), E2SW

Containing Approximately 121.33 acres

T. 1 N., R. 22 E., Boise Meridian

Section 1: Lots 1 (40.03), 2 (40.10), 3 (40.16), SWNE

Section 19: Lots 1 (37.81), 2 (38.00), SENW

Containing Approximately 276.10 acres

T. 1 N., R. 21 E., Boise Meridian

Section 11: NWSW
Section 12: Lot 3 (46.86)
Section 18: SE, SESW
Section 19: N2NE, SENE, NESE
Section 20: Lot 3 (29.19), NESW, E2SE, SWSE
Section 21: SWNE, W2SE
Section 24: Lot 2 (43.36), W2SW
Section 28: S2NW, SWNE, W2SE, SESE, SW
Section 29: Lots 1 (29.36), 2 (29.49), 3 (29.61), E2NW, W2NE, SENE, N2SE, SESE, NESW
Section 32: Lot 2 (29.86), NENW, NENE
Section 33: Lots 1 (39.73), 2 (39.20), 3 (38.66), 4 (38.13), N2NE
Containing Approximately 2,073.45 acres

T. 1 N., R. 20 E., Boise Meridian

Section 1: NESE
Section 4: SWSE
Section 13: SE, SWSW
Section 24: SWSW
Containing Approximately 320 acres

T. 1 N., R. 16 E., Boise Meridian

Section 7: Lot 2 (44.18)
Section 18: Lots 3 (44.50), 4 (44.57), E2SW, W2SE, SESE
Section 19: Lots 1 (44.57), 2 (44.50), 3 (44.44), 4 (44.37), E2NW, N2NE, SWNE, W2SE, E2SW
Section 20: NWNW, SWSW
Section 31: Lot 1 (40.94), E2NW, NE, NWSE
Containing Approximately 1,561.14 acres

T. 1 N., R. 15 E., Boise Meridian

Section 2: Lots 3 (41.12), 4 (41.20), S2NW, W2SW
Section 26: SENW
Containing Approximately 282.32 acres

T. 1 N., R. 14 E., Boise Meridian

Section 5: Lots 2 (40.80), 3 (40.79), N2SW
Section 10: W2SW
Section 11: NENE
Section 14: N2NE
Section 20: W2NW
Containing Approximately 441.59 acres

T. 1 N., R. 13 E., Boise Meridian

Section 4: Lots 1 (41.06), 2 (41.15), 3 (41.29), 4 (44.61), 5 (42.49), 6 (41.89)
Section 5: Lots 1 (41.48) 2 (41.16), 3 (40.85), 4 (40.53), S2N2, S2
Section 7: Lot 5 (39.72)
Section 8: Lot 1 (40.40)
Section 10: W2SW
Section 13: W2E2, SESW
Section 15: W2W2, E2SW
Section 18: Lots 3 (46.72), 4 (47.01)
Section 19: Lots 1 (47.33), 2 (47.66), 3 (47.99), 4 (48.32), E2W2, E2NE
Section 20: SWNW, NWSW
Section 24: SWNW, E2NW, NE, N2SW
Section 30: Lot 1 (48.32), NENW

Containing Approximately 2,549.98 acres

T. 1 N., R. 12 E., Boise Meridian

Section 12: ALL
Section 13: N2, SE, E2SW, NWSW
Section 14: N2NE, SENE
Section 24: NENW, NE, N2SE
Section 25: E2SE
Section 31: SE

Containing Approximately 1,880 acres

T. 2 N., R. 12 E., Boise Meridian

Section 31: Lots 1 (31.11), 2 (30.84), 3 (30.58), 4 (30.24), 5 (29.70), 6 (39.46), 7 (39.22), E2NW, NE, NESW, N2SE
Section 32: Lots 1 (39.36) 2 (39.29), 3 (39.21), 4 (39.14), N2, N2S2
Section 33: Lots 1 (39.79), 2 (39.61), 3 (39.45), 4 (39.82), N2, N2S2
Section 34: Lots 1 (40.64), 2 (40.09), 3 (39.84), 4 (39.82), N2, N2S2
Section 35: Lots 1 (41.36), 2 (41.02), 3 (40.98), 4 (40.92), N2, N2S2

Containing Approximately 3,151.49 acres⁺

⁺**Note:** These lands are currently identified for transfer to the U.S. Forest Service only. Under the Amendments these lands will be available for disposal to others as well.

T. 2 N. R. 13 E., Boise Meridian

Section 31: Lots 1 (45.48), 2 (45.63), 3 (45.79), 4 (45.83), 5 (39.72), 6 (39.77), 7 (39.99), E2NW, NE, N2SE, SESW
Section 32: Lots 1 (38.56), 2 (38.91), 3 (39.31), 4 (39.81), N2, N2S2
Section 33: Lots 1 (37.85), 2 (38.14), 3 (38.31), 4 (38.34), N2, N2S2

Containing Approximately 1,931.44 acres

T. 2 N., R. 20 E., Boise Meridian

Section 4: SWNE
Section 10: W2NW
Section 11: NWSW
Section 13: S2SE, SESW
Section 23: NENW, N2NE
Section 24: N2N2
Section 28: SWSW

Containing Approximately 600 acres

T. 2 N., R. 21 E., Boise Meridian

Section 12: SESW
Section 14: E2NW, N2NE
Section 15: SENE, NESE, SWSE, SWSW
Section 20: S2NW, E2NE, SWNE, NWSE

Containing Approximately 600 acres

T. 2 N., R. 22 E., Boise Meridian

Section 1: N2NE, S2SE, W2SW, NESW, SWNW
Section 2: SESE
Section 4: SESE
Section 9: N2NE, SWNE, SE, S2SW
Section 11: SENW, SWNE, W2SE, E2SW
Section 12: NWNW, N2NE, E2SW, SWSW
Section 13: SENW, SWNE, NWSE, SWSW
Section 15: E2SE
Section 17: NE
Section 21: N2NW, SENW
Section 22: NENE
Section 24: NWNW
Section 25: NWNW
Section 33: W2NE

Containing Approximately 1,960 acres

T. 2 N. R 23 E., Boise Meridian

Section 6: Lot 1 (39.14), NENW, SWSE
Section 18: N2SE, E2SW
Section 30: Lot 2 (39.36)
Section 31: Lots 2 (39.63), 3 (39.90), 4 (40.10), 7 (40.79)

Containing Approximately 478.92 acres

T. 3 N., R. 23 E., Boise Meridian

Section 32: SWNE
Section 33: NWSW

Containing Approximately 80 acres

T. 3 N., R. 22 E., Boise Meridian

Section 35: SENE

Containing Approximately 40 acres

T. 3 N., R. 20 E., Boise Meridian
Section 19: NENW

Containing Approximately 40 acres

T. 3 N., R. 19 E., Boise Meridian
Section 24: W2NE, SENE

Containing Approximately 120 acres

T. 4 N., R. 17 E., Boise Meridian
Section 13: Portions south of road NENENENWNW and E2E2E2SEnw (6 +/-)

Containing Approximately 6 acres

References

- U.S. Department of the Interior – Bureau of Land Management (USDI-BLM). 1999. “Upper Snake River District Cave Management Plan.” Idaho Falls, Idaho: Upper Snake River District, BLM.
- _____. June 2002. “Draft Amendments to Shoshone Field Office Land Use Plans for Land Tenure Adjustment and Areas of Critical Environmental Concern.” Environmental Assessment # ID-076-2002-0004. Shoshone, Idaho: Shoshone Field Office, BLM.
- _____. April 2003. “Proposed Amendments to Shoshone Field Office Land Use Plans for Land Tenure Adjustment and Areas of Critical Environmental Concern.” Shoshone, Idaho: Shoshone Field Office, BLM.