

HOW TO USE THIS CD

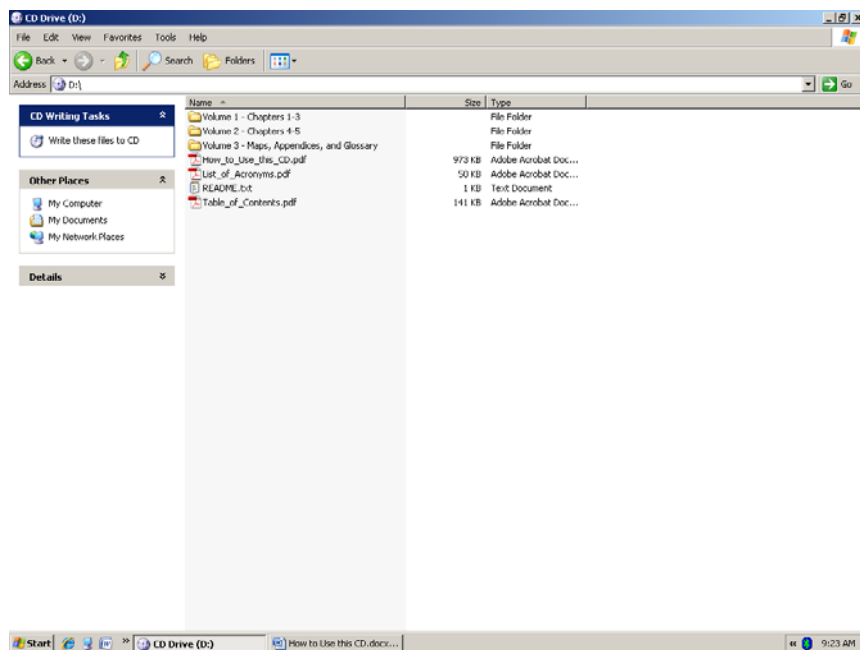
This CD contains the Jarbidge Draft Resource Management Plan (RMP) and Environmental Impact Statement (EIS). All documents on this CD are in a PDF format and require Adobe Reader. Adobe Reader was selected as the file type because it prevents alteration of the document, preserves document formatting, and does not require the user to have a specific computer operating system or word processing program (i.e., Microsoft Office 2007). A text file labeled README.txt contains information on how to download a free version of Adobe Reader.

This CD provides the same information as the printed version of the Jarbidge Draft RMP/EIS, but allows for added search and navigation capabilities. This document is intended to explain some of those added capabilities.

File Structure

Upon opening the CD, the user will see the following Adobe documents and file folders:

- Adobe Documents
 - How_to_Use_this_CD
 - List_of_Acronyms
 - Table_of_Contents
- File Folders
 - Volume 1 - Executive Summary and Chapters 1-3
 - Volume 2 – Chapters 4-5
 - Volume 3 – Maps, Appendices, and Glossary



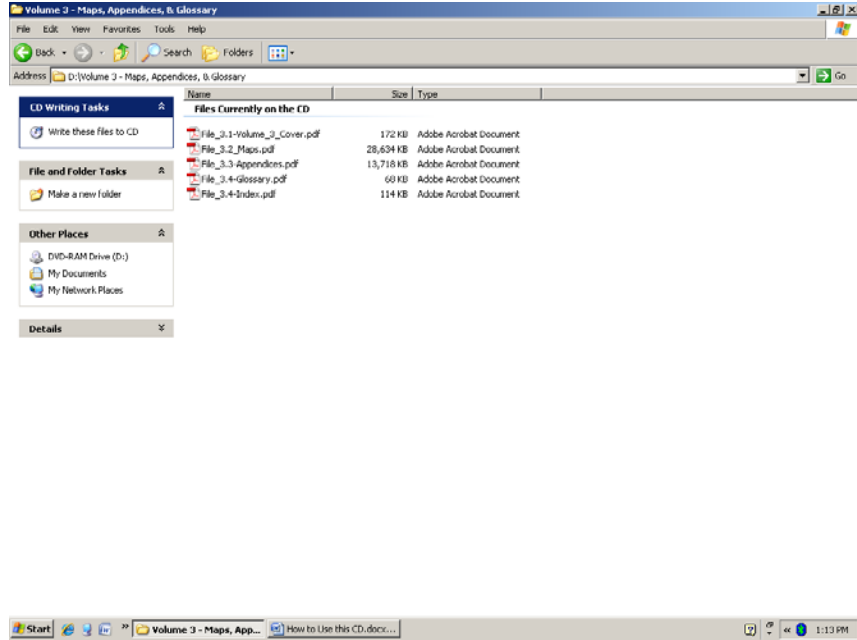
The List of Acronyms document contains all acronyms used throughout the Jarbidge Draft RMP/EIS. The Table of Contents contains a list of all contents, tables, and figures contained in each volume. Unlike the printed version, where these documents are provided in the front of each volume, these documents are only saved on the CD once. In addition, each chapter will have a Table of Contents at the beginning of the document.

Upon opening the volume file folder, the user will see the documents contained in each volume. Volume 1 includes introductory information such as the Dear Reader Letter, Errata Sheet, and Executive Summary, in addition to Chapters 1 through 3. Volume 2 contains Chapters 4 and 5. Volume 3 contains Maps, Appendices, and the Glossary.

How to Use this CD

Within each of the file folders, documents, including the volume cover, are assigned a number in order to correspond with the order they appear in the print version. This number starts with the volume number and is then followed with a number for order of appearance. For example, in Volume 3, the documents are numbered as follows:

- File_3.1–
Volume_3_Cover
- File_3.2–Maps
- File_3.3–Appendices
- File_3.4–Glossary
- File_3.5–Index

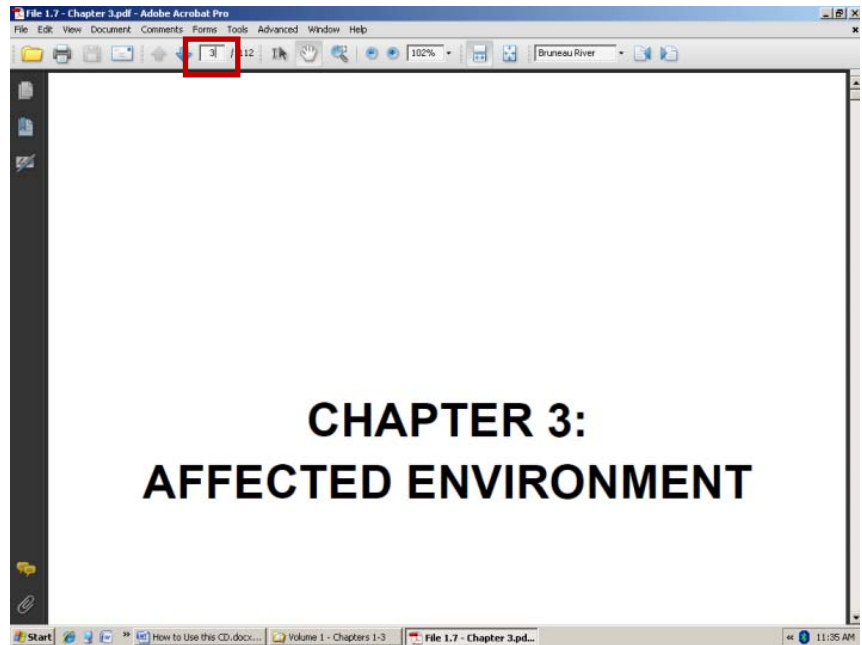


Navigating within Documents

Each document is linked and bookmarked to allow for easy navigation. File_1.7–Chapter_3, found in the Volume 1 folder, will be used as an example to demonstrate the use of each of these tools. This file can be opened by double clicking on the Volume 1 file folder and then double clicking on File_1.7–Chapter_3.

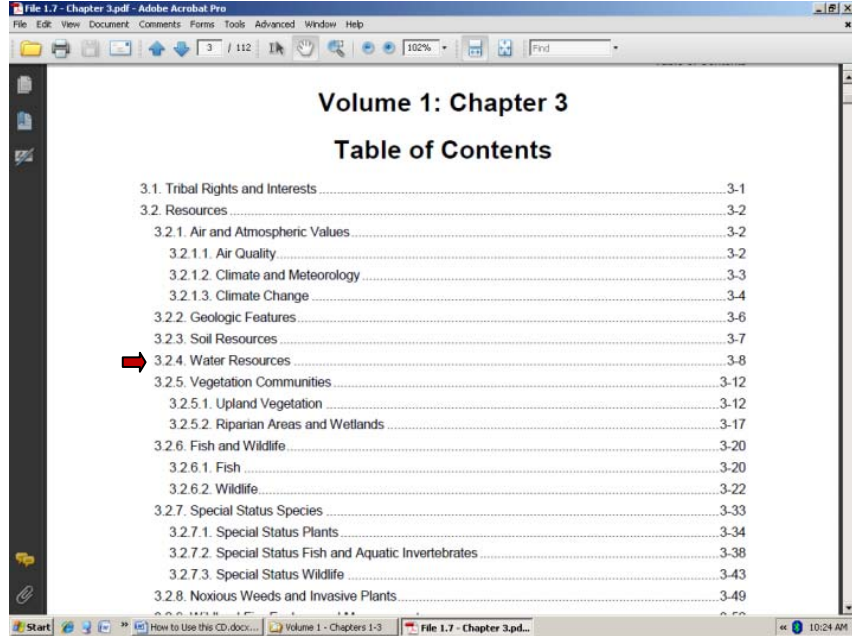
Links

There are several types of links in each document. First, the Table of Contents contains links to each section. You can get to the Table of Contents by scrolling or paging down or entering a 3 in the page number box.



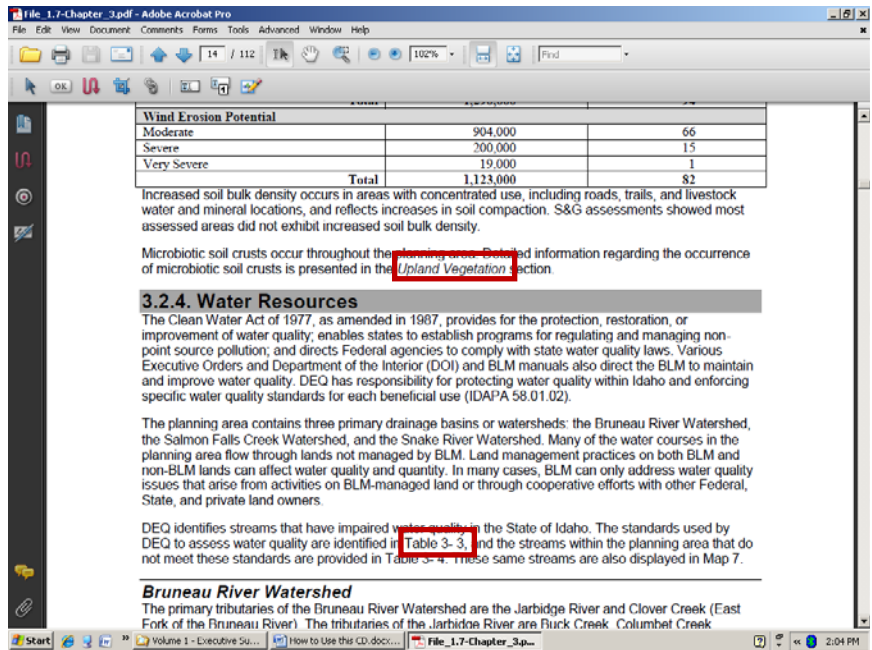
How to Use this CD

Clicking on the title of the section, table, or figure you wish to see will move the document to the page that section, table, or figure is on. For example, clicking on [3.2.4. Water Resources](#) in [File 1.7 Chapter 3](#) will take you to the *Water Resources* section of that chapter.



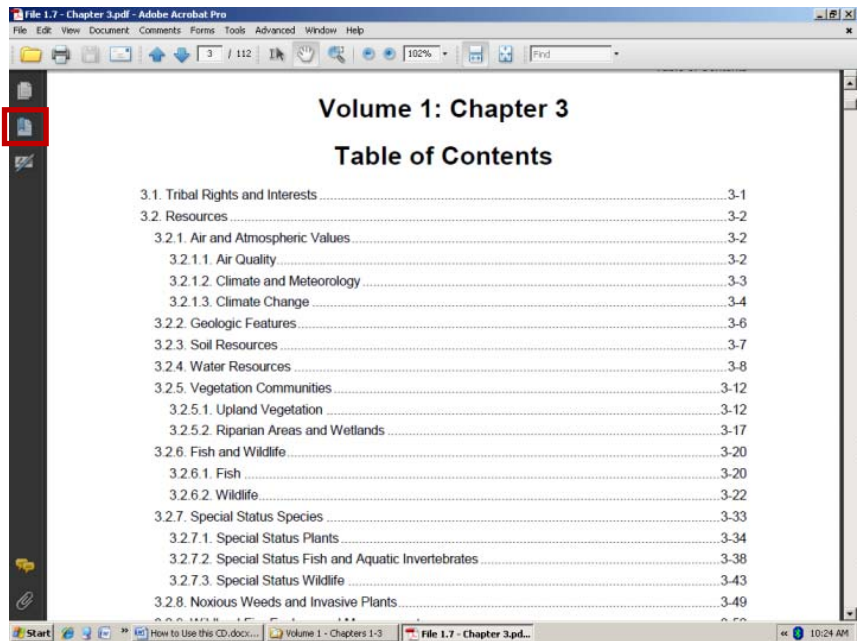
You can also use links to navigate within the document. The *Water Resources* references several tables. Clicking on the table number will take you to that table. The reference to the Upland Vegetation section is also highlighted in the picture to the right as an example of a link.

This technique will work for tables, sections, and sub-sections of the document. You can tell if a link exists by hovering your mouse over the title. If the arrow changes to a hand, a link exists.

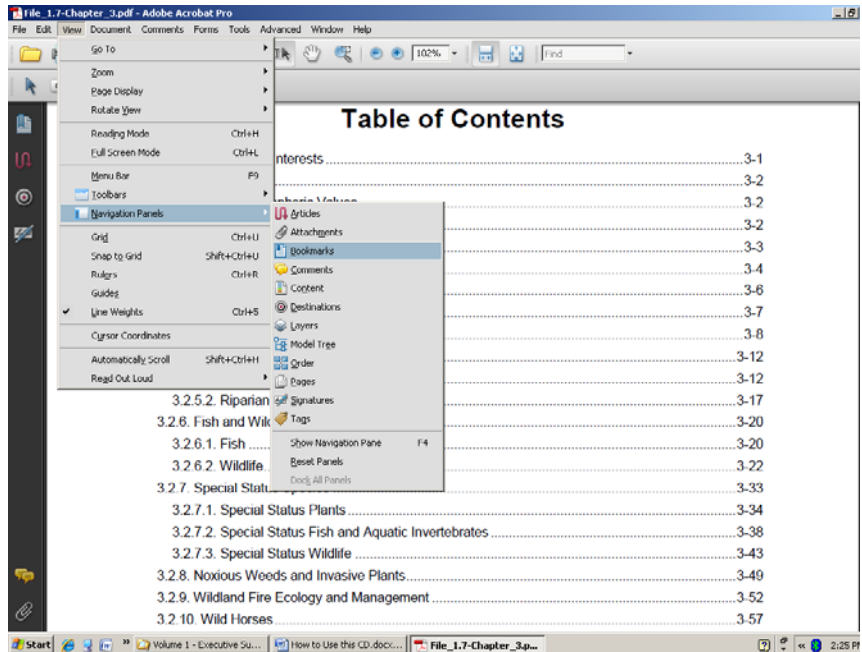


Bookmarks

In order to use bookmarks, open the bookmark pane by clicking on the bookmark icon on the left side of the screen.

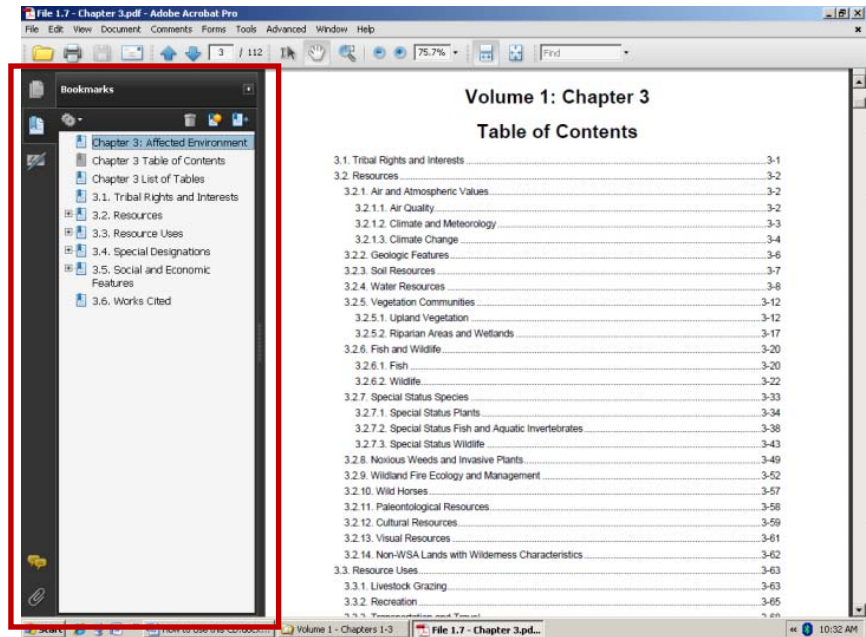


If the Bookmark icon is not visible, click on View – Navigation Panels – Bookmarks.

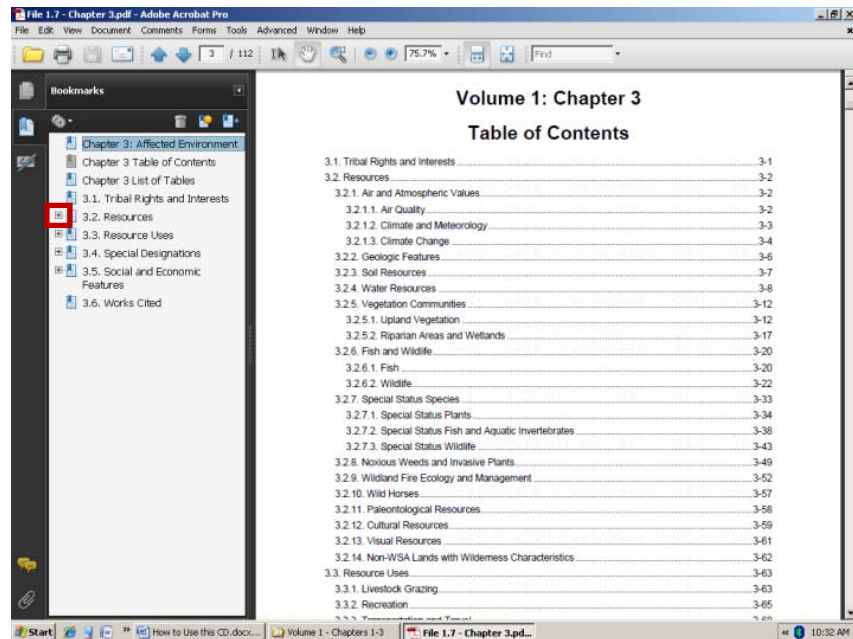


How to Use this CD

This will open the bookmark pane. Clicking on any of the sections in the bookmark menu will take you to that page.

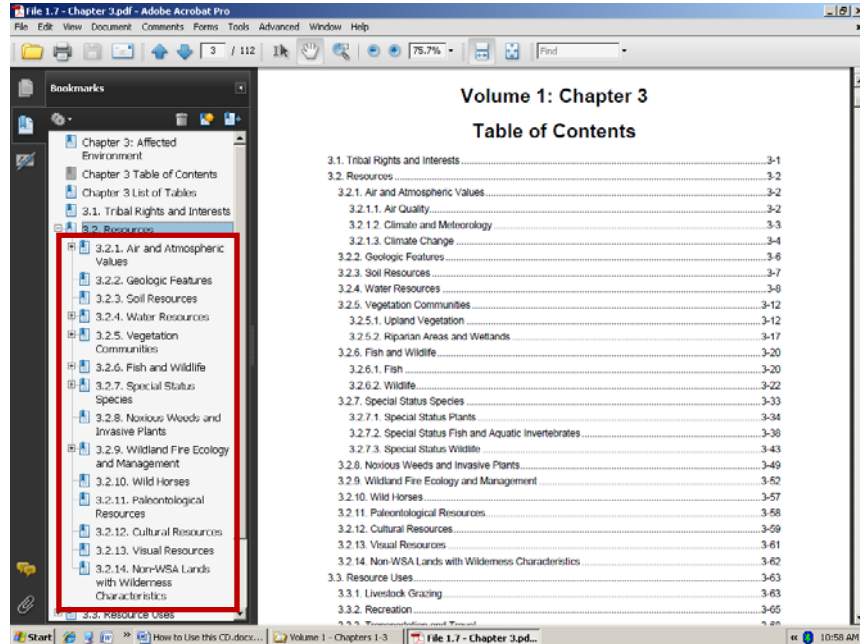


Some sections have collapsible menus that can be expanded. To continue our example of navigating to the *Water Resources* section in File 1.7 Chapter 3, you will notice that *Water Resources* does not appear in the bookmark menu. You can see from the Table of Contents that *Water Resources* is in the *Resources* section. The *Resources* bookmark menu can be expanded by clicking the button next to 3.2. *Resources*.

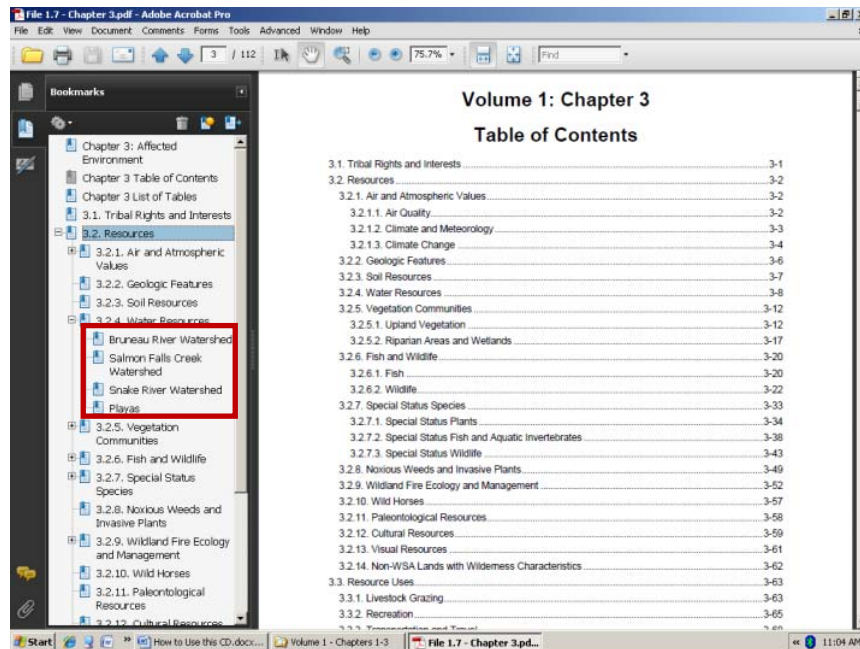


How to Use this CD

Now you can see all of the bookmarks within the Resources bookmark.



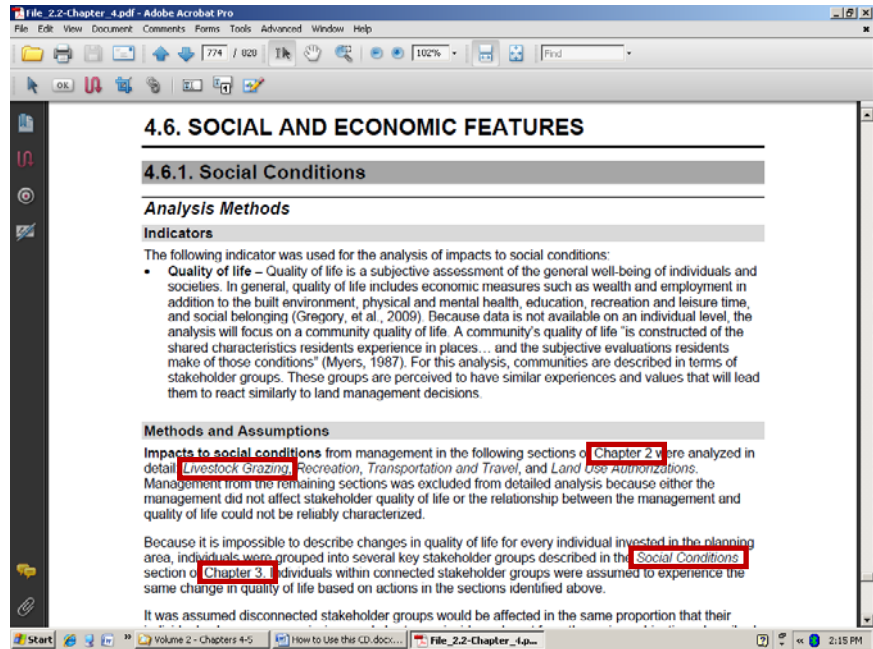
You may have noticed that *Water Resources* also has an expandable menu. By clicking on the button next section, you can see additional sections that are not displayed in the Table of Contents.



Navigating Between Documents

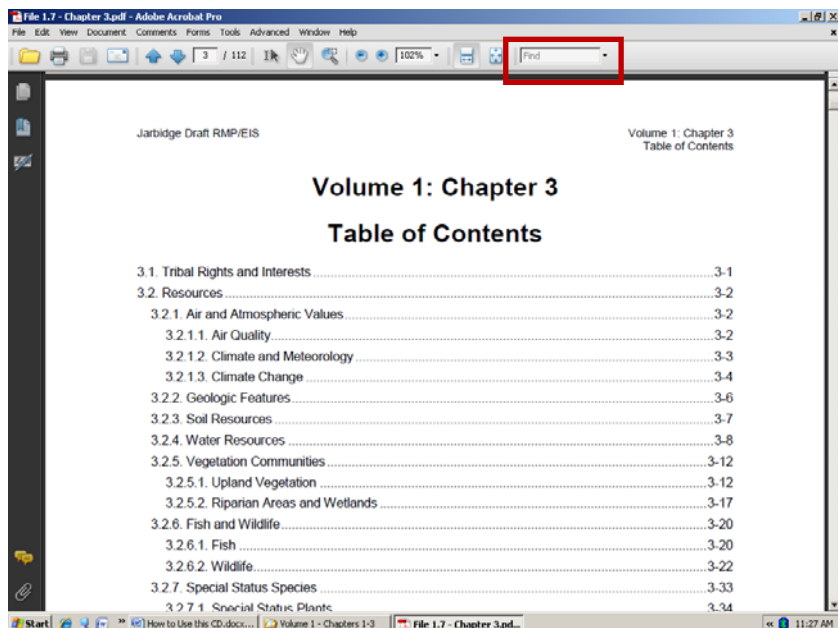
Each document is linked for easy navigation between documents. File_2.2–Chapter_4, found in the Volume 2 folder, will be used as an example to demonstrate the use of each of these tools. This file can be opened by double clicking on the Volume 2 file folder and then double clicking on File_2.2–Chapter_4.

Navigate to the *Social Conditions* section using links or bookmarks as described above. Under Methods and Assumptions, there is a reference to Chapter 2. Clicking on the Chapter 2 title will cause that document to open. Several sections of Chapter 2 are also listed. Clicking on any of those section titles will open Chapter 2 and take you to that section. The reference to the *Livestock Grazing* section of Chapter 2 is highlighted as an example. The following paragraph references a section in Chapter 3. Again, clicking on the *Social Conditions* section title will open Chapter 3 and take you to that section, while clicking on the Chapter 3 title will simply open Chapter 3. This technique will work for all chapters, maps, and appendices on this CD.



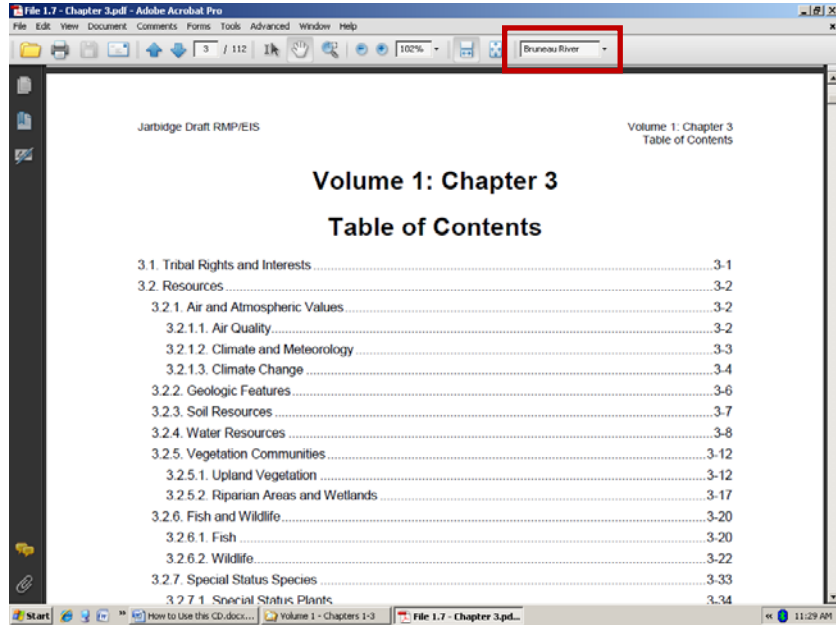
Searching within Documents

Each document can be searched for specific words by using the find box at the top of the screen.



How to Use this CD

For example, if you wanted to find each time the Bruneau River was discussed, you would type Bruneau River in that box and press Enter.



The term, Bruneau River, is now highlighted when it first appears. Two new buttons will appear to help you with your search. These buttons allow you to continue to search forwards or backwards in the document.

