

RESOURCE MANAGEMENT PLAN/
ENVIRONMENTAL IMPACT STATEMENT

Scoping Report for the Jarbidge Resource Management Plan

September 2006



It is the mission of the Bureau of Land Management to sustain the health, diversity, and productivity of the public lands for the use and enjoyment of present and future generations.

Jarbidge Resource Management Plan

SCOPING REPORT

Approved by:

Howard Hedrick

Howard Hedrick
Twin Falls District Manager

9/28/06

Date

Page intentionally left blank.

TABLE OF CONTENTS

A. INTRODUCTION AND BACKGROUND.....	1
Purpose and Need	1
Planning Area Description.....	1
Scoping Process Description	3
Shoshone-Paiute Tribal Consultation	5
Shoshone-Bannock Tribal Consultation.....	5
Cooperating Agencies/Invitees.....	5
Other Briefings and Coordination Efforts	6
Scoping Comment Analysis	7
B. ISSUE SUMMARY.....	8
Summary of Public Comments.....	8
Issues and Concerns Raised by the Public during Scoping.....	10
Anticipated Decisions to be Made.....	17
Issues and Concerns Raised that May Not Be Addressed.....	22
Valid Existing Management to be Carried Forward.....	23
Special Designations and Nominations	23
C. DRAFT PLANNING CRITERIA	24
D. DATA SUMMARY AND GAPS.....	25
E. SUMMARY OF FUTURE STEPS IN THE PLANNING PROCESS	25

TABLES

Table 1. Open House Scoping Meeting Schedule and Attendance.	3
Table 2. BLM Idaho, Twin Falls District, Print Media Distribution List.	4
Table 3. BLM Idaho, Twin Falls District, Broadcast Media Distribution List.	5
Table 4. Agencies Invited to Establish Cooperating Agency Status for the Jarbidge RMP.	6
Table 5. States Represented by Comments during Scoping.	8
Table 6. Idaho Communities Represented by Comments during Scoping.	8
Table 7. Type of Participant Submitting Comments during Scoping.	9
Table 8. Anticipated Decisions To Be Made: Tribal Treaty Rights and Trust Responsibilities. .	18
Table 9. Anticipated Decisions To Be Made: General Planning.	18
Table 10. Anticipated Decisions To Be Made: Resources.	18
Table 11. Anticipated Decisions To Be Made: Resource Uses.	20
Table 12. Anticipated Decisions To Be Made: Special Designations.	22
Table 13. Anticipated Decisions To Be Made: Social and Economic.	22

FIGURES

Figure 1. Jarbidge RMP Planning Area.	2
Figure 2. Percentage of Comments by Major Topic Area.	9
Figure 3. Percentage of Comments by “Resources” Subcategories.	9
Figure 4. Percentage of Comments by “Resource Uses” Subcategories.	10

APPENDIX

Appendix 1. Notice of Intent to Prepare the Jarbidge RMP.	27
Appendix 2. Applicable Laws, Regulations, and Policies.	29

A. INTRODUCTION AND BACKGROUND

The Bureau of Land Management (BLM), Twin Falls District is preparing a revised Resource Management Plan/Environmental Impact Statement (RMP/EIS) for the Jarbidge Field Office (FO) planning area. This area was previously recognized as the Jarbidge Field Office of the Boise and Lower Snake River Districts.

Management decisions for this area are currently covered by the 1987 Jarbidge RMP. A limited number of amendments to this plan have been made during the past 19 years. The revised Jarbidge RMP will replace the 1987 RMP as well as its amendments for lands within the current planning area boundary (Figure 1).

Purpose and Need

The purpose of the Jarbidge RMP is to establish goals and objectives for resource management and the measures needed to achieve those goals and objectives; identify lands that are open and available for certain uses, including any restrictions, and lands that are closed to certain uses; and provide comprehensive management directions for and/or allocate use of all resources. In addition, the revised RMP should provide an opportunity to further restore or maintain resource conditions and provide for the economic and other needs of local communities over the long term.

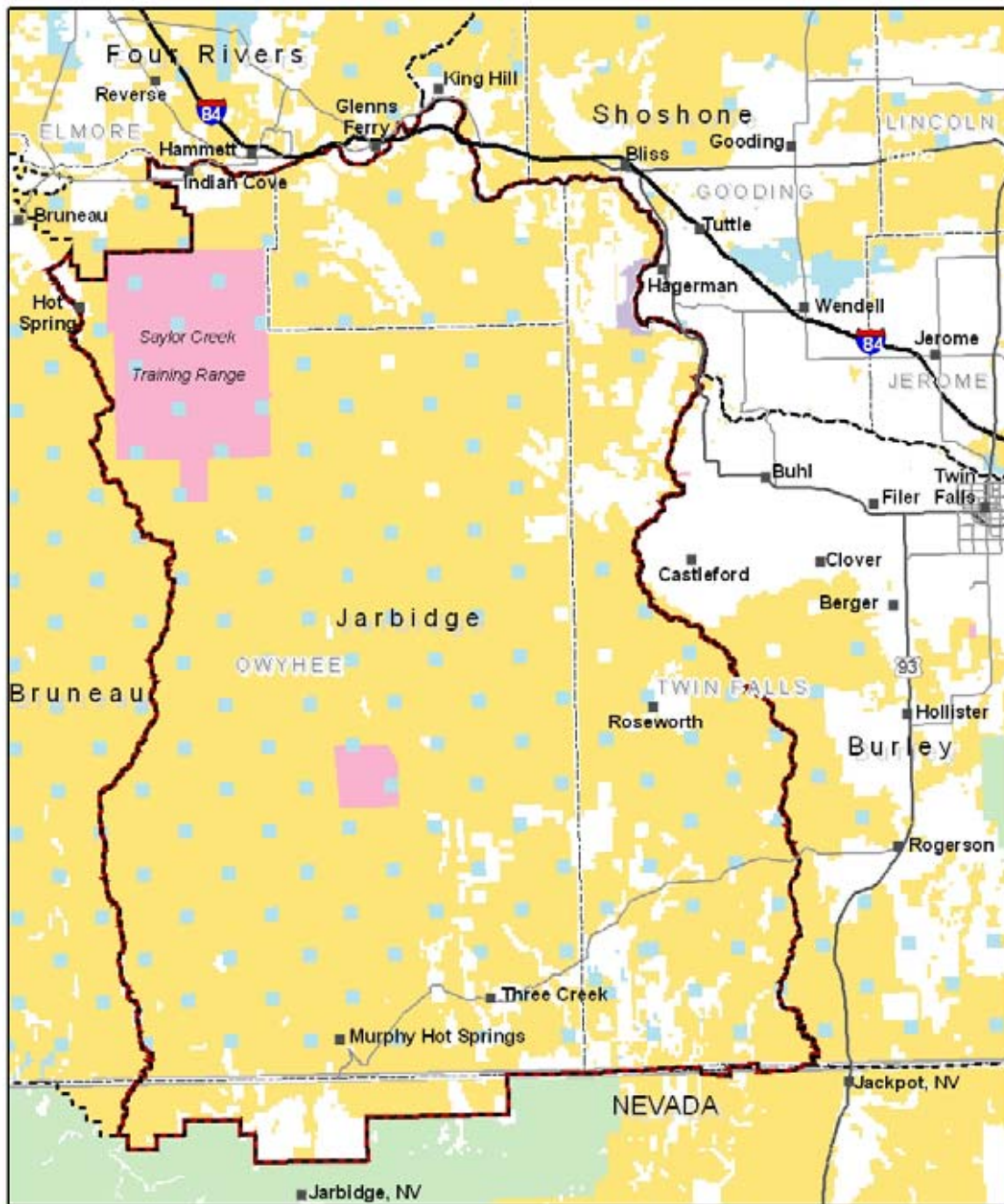
A 2001 evaluation of the 1987 Jarbidge RMP pointed toward the need for an updated plan. In the intervening 19 years, resource conditions have changed, new issues and concerns have been raised, and the demands on public land resources have increased. A revised RMP is also needed to meet requirements identified in the September 30, 2005, Stipulated Settlement Agreement in the case of Western Watersheds Project v K Lynn Bennett, under the jurisdiction of the District Court, District of Idaho. This RMP may result in the continuation of some existing land use planning decisions and the development of new land use planning decisions for those issues identified internally and through public scoping.

Planning Area Description

The Jarbidge RMP planning area extends from the Bruneau River on the west to Salmon Falls Creek on the east and from the Snake River on the north to the northern boundaries of the BLM Elko Field Office and the Humboldt-Toiyabe National Forest on the south. It includes parts of Elmore, Owyhee, and Twin Falls Counties in south central Idaho and Elko County in northern Nevada. Although these counties have a combined population of nearly 155,000¹, Hot Springs, Indian Cove, Murphy Hot Springs, Roseworth, and Three Creek are the only communities within the planning area; all have populations of less than 100 people and are unincorporated. The majority of the planning area supports sagebrush steppe and seeded grasslands mostly from fire rehabilitation projects.

¹ U.S. Census Bureau. "State and County QuickFacts." <http://quickfacts.census.gov>.

Figure 1. Jarbidge RMP Planning Area.



- Legend**
- Towns/Communities
 - ▭ Jarbidge Planning Area
 - ▭ BLM Field Office Boundary
 - ▭ County Boundary
 - ▭ State Boundary
- Land Status**
- Bureau of Land Management
 - Bureau of Reclamation
 - Military, Department of Defense
 - Forest Service
 - National Park Service
 - Private
 - State



DRAFT

No warranty is made by the Bureau of Land Management for use of the data for purposes not intended by the BLM

Scoping Process Description

Scoping is the term used to describe the early and open process for identifying the issues to be addressed in the planning process. A Notice of Intent (NOI) to prepare the Jarbidge RMP was published in the Federal Register on January 10, 2006 (Appendix 1). This notice served as the beginning of BLM's formal scoping process for the RMP. It included the following internally identified issues:

- Tribal treaty rights and trust responsibilities;
- Availability and management of public lands for commercial uses (e.g., livestock grazing, minerals development);
- Vegetation management including invasive species, noxious weeds, riparian areas, and wetlands;
- Fire and fuels management;
- Management of habitat for wildlife and special status species;
- Management of transportation, public access, and recreational opportunities;
- Land tenure adjustments and rights of way including wind energy and utility corridors;
- Wild horses; and
- Management of areas with special values.

Open house scoping meetings were held in Twin Falls, Buhl, Glens Ferry, and Three Creek, Idaho, in May 2006. Fifty-six individuals participated in these meetings (Table 1). The open house format was used to encourage two-way dialogue and discussions about issues to be addressed in the plan, concerns about the process, the planning criteria, and the development of the range of alternatives to be analyzed in the draft RMP/EIS. At each open house, at least five members of the RMP Interdisciplinary Team (ID Team) plus at least one manager from the Twin Falls District were available to answer questions from the public. Maps and posters were displayed around the room to facilitate discussion between the BLM staff and the public. Some attendees submitted written comments at the open houses. In addition, following each open house, ID Team members documented the issues and concerns they discussed with various publics.

Table 1. Open House Scoping Meeting Schedule and Attendance.

Location	Date	Number of Attendees
Twin Falls	May 16, 2006	18
Buhl	May 18, 2006	9
Glens Ferry	May 23, 2006	17
Three Creek	May 24, 2006	12

Several methods were used to advertise the open house meetings and the scoping period for the Jarbidge RMP. First, an e-mail address and website for the RMP were created when the NOI was published. The website provided information regarding the open houses and instructions for submitting scoping comments. Next, ID Team members compiled a mailing list for the RMP, including individuals and organizations on other BLM mailing lists; Jarbidge FO permit and lease holders; Tribes; Federal, State, and local government agencies; mailing list requests; and other individuals or organizations thought to be interested in the Jarbidge planning effort.

A one-page mailing was sent to the mailing list on April 28, 2006, that informed recipients of the open house schedule and how to submit comments. These same parties were sent the Jarbidge RMP First Newsletter on May 12, 2006. The newsletter provided more information about the planning process, public participation in the RMP, and the open house schedule. The newsletter also contained a postage-paid reply card that could be returned as a request to remain on the mailing list and used to provide scoping comments². Copies of the newsletter were distributed to attendees at meetings and briefings and were also available to the public at the Jarbidge, Shoshone, and Burley Field Offices.

A press release on the open houses and scoping process was sent to contacts from the Twin Falls District Media Distribution List the week of May 8, 2006 (Tables 2 and 3); two newspapers printed stories and one radio station aired a story based on the press release. The local CBS affiliate, KMVT, produced a short segment on the Jarbidge RMP that aired during the evening newscasts on May 15, 2006. Print ads were also placed in six newspapers prior to the open houses.

Table 2. BLM Idaho, Twin Falls District, Print Media Distribution List.

Name	Location	Scoping Coverage
<i>Daily Newspapers</i>		
Times News	Twin Falls	Ad (5/12, 5/14, 5/15, 5/17)
South Idaho Press	Burley	
Idaho Statesman	Boise	
<i>Weekly Newspapers</i>		
Minidoka County News	Rupert	
Buhl Herald	Buhl, Castleford, Filer	Story (5/17); Ad (5/10, 5/17)
North Side News	Jerome	Ad (5/11)
Gooding County Leader	Gooding	Ad (5/11)
Lincoln County Journal	Shoshone, Richfield, Dietrich	
Wood River Journal	Hailey	
Idaho Mountain Express	Ketchum	
Arco Advertiser	Arco	
Mountain Home News	Mountain Home	Ad (5/17)
Owyhee Avalanche	Homedale	Story (5/10); Ad (5/17)

² To avoid sending unwanted mail, those who have not participated in scoping either by submitting comments, attending an open house or briefing, or requesting to remain on the mailing list will be removed from the mailing list at the end of the scoping period. Organizations, government agencies, and holders of permits or leases in the Jarbidge FO will remain on the list regardless of their present level of participation.

Table 3. BLM Idaho, Twin Falls District, Broadcast Media Distribution List.

Name	Location	Scoping Coverage
<i>Television Stations</i>		
KMVT Channel 11 (CBS)	Twin Falls	Story (5/15)
KTFT Channel 38 (NBC)	Twin Falls	
KTVB Channel 7 (NBC)	Boise	
KPVI Channel 6 (NBC)	Pocatello	
KSAW Channel 52 (ABC)	Boise	
<i>Radio Stations</i>		
KART 1400 AM, KMVX 102.9 FM	Jerome	
KBAR 1230 AM, KZDX 99.9 FM, KFTA 970 AM, KKMV 92.5 FM	Rupert	
KSKI 103.7 FM, KECH 95.3 FM	Ketchum	
KLIX 1310 AM, KLIX 96.5 FM, KEZJ 95.7 FM, KTFI 1270 AM, KBSW 91.7	Twin Falls	Story (KBSW)

Shoshone-Paiute Tribal Consultation

Consultation on the Jarbidge RMP with the Shoshone-Paiute Tribes is conducted through the Twin Falls District’s established government-to-government consultation process, the Wings and Roots Native American Campfire. The Jarbidge RMP was briefly discussed at Wings and Roots meetings between December 2005 and September 2006. Consultation with the Shoshone-Paiute Tribes for the Jarbidge RMP will begin in earnest in October 2006 and will continue through the entire planning process. Once the Jarbidge RMP is complete, consultation will continue as specific portions of the RMP are implemented. The Shoshone-Paiute tribal staff toured the southern portion of the planning area with Jarbidge FO staff on August 10, 2006.

Shoshone-Bannock Tribal Consultation

Formal government-to-government consultation with the Shoshone-Bannock Tribes is conducted through the Fort Hall Business Council, coordinated with the Shoshone-Bannock environmental staff. A brief introduction to the Jarbidge RMP was given to the Fort Hall Business Council on April 27, 2006. Consultation with the Shoshone-Bannock Tribes will also continue throughout the preparation and implementation of the Jarbidge RMP.

Cooperating Agencies/Invitees

A number of agencies were invited to participate in the RMP planning process as cooperating agencies (Table 4). To date, six agencies have accepted the BLM’s invitation and are working to finalize a Memorandum of Understanding (MOU) to formally establish the relationship: Idaho State Department of Agriculture, Idaho Department of Fish & Game, Idaho Department of Lands, Idaho Department of Parks & Recreation, the National Park Service – Hagerman Fossil Beds National Monument, and the Elko County Board of Commissioners. The Owyhee County Commissioners have indicated they will participate in the Jarbidge RMP through their existing coordination agreement with the Twin Falls District. A number of agencies have formally declined the invitation to become a cooperating agency as of July 31, 2006, including the US

Fish and Wildlife Service offices in Boise and Reno, the Idaho Department of Transportation, and the Idaho Department of Water Resources.

Table 4. Agencies Invited to Establish Cooperating Agency Status for the Jarbidge RMP.

Federal Agencies	State Agencies	Local Agencies
Mountain Home Air Force Base	Idaho Department of Fish and Game	Elko County Board of Commissioners
National Park Service – Hagerman Fossil Beds National Monument	Idaho Department of Lands	Elmore County Board of Commissioners
Natural Resources Conservation Service	Idaho Department of Parks and Recreation	Owyhee County Commissioners
US Fish and Wildlife Service-Boise	Idaho Department of Transportation	Three Creek Highway District
US Fish and Wildlife Service-Reno	Idaho Department of Water Resources	Twin Falls County Commissioners
US Geological Survey-Forest and Rangeland Ecosystem Science Center	Idaho Governor's Office of Species Conservation	
US Geological Survey-Water Resources Division	Idaho State Department of Agriculture	
	Idaho State Historic Preservation Office	

Other Briefings and Coordination Efforts

Members of the ID Team and the Twin Falls District managers have conducted briefings and presentations on the Jarbidge RMP for a variety of groups. Many of these presentations were provided at regularly scheduled coordination meetings, but others were given at the group’s request. These presentations and meetings include:

- 71 Livestock Association (Buhl, ID – February 28, 2006 and Three Creek, ID – June 13, 2006)
- Nevada Division of Wildlife (Elko, NV – April 11, 2006)
- Owyhee County Commissioners (Murphy, ID – April 17, 2006)
- Twin Falls District Resource Advisory Council (Twin Falls, ID – May 9 and June 29, 2006, and Shoshone, ID – August 8, 2006)
- Twin Falls Chamber of Commerce Government Affairs Committee (Twin Falls, ID – May 26, 2006)
- Bull Trout Recovery Team (Jarbidge, NV – June 21-22, 2006)
- Idaho Congressional Briefing (Twin Falls, ID – June 22, 2006)
- The Wilderness Society (Twin Falls, ID – June 29, 2006)
- US Fish and Wildlife Service (Boise, ID – June 29, 2006)
- Idaho ATV Association Inc., Southern Idaho Desert Racing Association, Treasure Valley Trail Machine Association (Boise, ID – July 17, 2006)
- Buhl Kiwanis (Buhl, ID – July 19, 2006)
- Twin Falls Monarch Lions Club (Twin Falls, ID – July 20, 2006)

- Mid-Snake Resource Conservation and Development Council (Twin Falls, ID – July 25, 2006)
- Mayors, Administrators, and City Councils Organization (Gooding, ID – July 27, 2006)
- Elko County Board of Commissioners (Jarbidge, NV – August 16, 2006)
- Twin Falls County Fair (Filer, ID – August 30 through September 4, 2006)

In addition, BLM staff engaged in regular coordination with representatives of the Plaintiffs and Intervenors in the case of *Western Watersheds Project v. K Lynn Bennett*, under the jurisdiction of the District Court, District of Idaho. BLM managers and staff have also been in regular contact with program leads from the Idaho BLM State Office as well as the Idaho BLM State Leadership.

Scoping Comment Analysis

Scoping comments were submitted to the Jarbidge FO via mail, e-mail, or in person. After the June 15, 2006, “to be most helpful” date, the ID Team read each comment and gathered to discuss comments received in writing and those provided at scoping events such as the open house scoping meetings. Issues and concerns identified from the submitted comments were placed in one of three categories: issues and concerns that may be resolved in the plan, issues and concerns that may be resolved through policy or administrative action, or issues and concerns beyond the scope of this plan.

Following this discussion, a database was created to catalog participants, contacts, and comments. “Participants” were defined as individuals or organizations that submitted comments through any of the methods mentioned above. “Contacts” referred to a specific commenting event (e.g., an e-mail, a letter). “Comments” were any individual, substantive comment made within a particular contact. One contact could contain more than one comment, and one participant could make more than one contact.

As comments were entered into the database, they were assigned comment codes. These codes facilitated analysis of the comments by categorizing them by major topic area and subcategories. Through this process, several concerns were identified that were not previously identified by the ID Team (see Appendix 1). Most of these new concerns were subsets of preliminary planning issues established at the beginning of the planning process. These new concerns include:

- Adjustment/division/correction of allotment boundaries,
- Wilderness character,
- Habitat fragmentation,
- Juniper control,
- Management of special recreation permits,
- Microbiotic crusts, and
- Management of released WSAs.

B. ISSUE SUMMARY

Summary of Public Comments

Public comments came from a variety of individuals representing an array of locations and organizations. Fifty-six individuals attended open house public meetings and 135 individuals submitted comments in writing. Table 5 contains states represented in the submitted comments.

Table 5. States Represented by Comments during Scoping.

State	Count	State	Count
Alaska	1	New Mexico	2
Arizona	1	Nevada	12
California	4	Oklahoma	2
Colorado	2	Oregon	1
Florida	1	Tennessee	1
Idaho	91	Texas	3
Illinois	1	Utah	2
Kentucky	1	Virginia	1
Maryland	1	Washington	2
Montana	1	Unknown	4
North Carolina	1		

Most individuals submitting public comments resided in the State of Idaho. Table 6 contains the Idaho communities represented through public comments.

Table 6. Idaho Communities Represented by Comments during Scoping.

Community	Count	Community	Count	Community	Count
Boise	24	Grand View	1	Meridian	1
Bruneau	1	Grangeville	1	Middleton	1
Buhl	5	Hagerman	4	Mountain Home	6
Caldwell	1	Hailey	2	Nampa	2
Castleford	5	Hammett	1	Pocatello	4
Clayton	1	Jerome	1	Rogerson	3
Eagle	1	Kimberly	3	Shoshone	1
Filer	2	King Hill	2	Twin Falls	12
Glenns Ferry	1	Lenore	1	Wendell	2
Gooding	1	Lewiston	1		

Participants in the scoping process represented themselves, a government agency or office, or an organization or business (Table 7). Participants were classified as an organization or business when they provided an organization or business name as part of their signature, on their comment card, or submitted their comment on letterhead. Ranchers with allotments in the FO

who provided their ranch or business name on their scoping comments were classified as businesses.

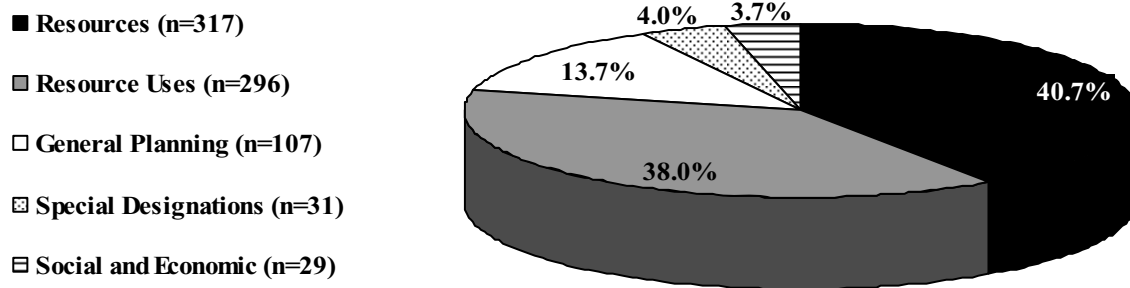
Table 7. Type of Participant Submitting Comments during Scoping.

Type of Participant	Count
Individual	56
Government Agency (Federal, State, or Local)	23
Organization or Business	60

These individuals produced 160 contacts, resulting in 780 comments. Nineteen contacts were variations of one identified form letter. Sixty-six contacts were solely requests to be included on the Jarbidge RMP mailing list.

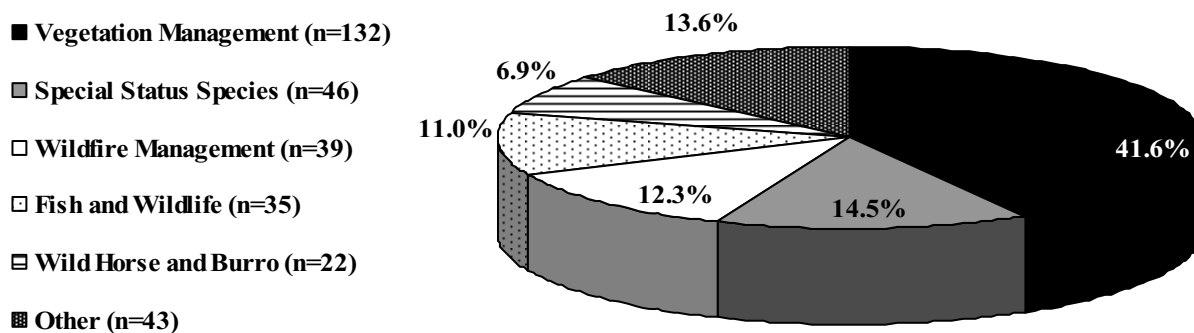
Comments were grouped into major topic areas and then further divided into subcategories. Most comments concerned “Resources” (40.7%) and “Resource Uses” (38.0%; Figure 2).

Figure 2. Percentage of Comments by Major Topic Area.



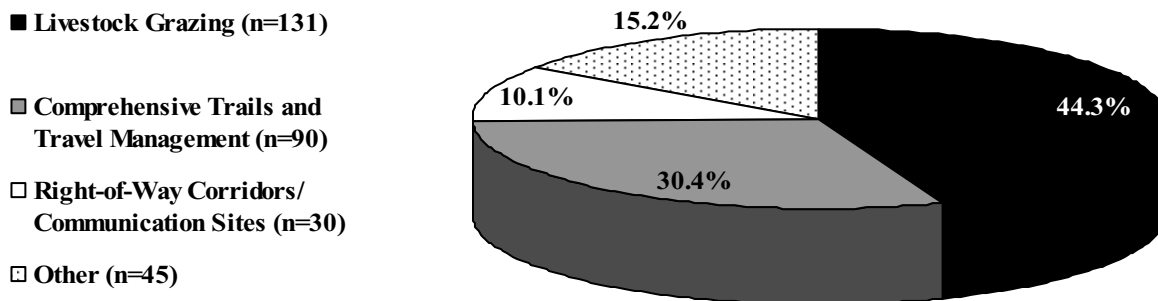
Among subcategories in the “Resources” category, “Vegetation Management” (41.6%) received the most comments (Figure 3). Topics in the “Other” subcategory (13.6%) included “Air Quality,” “Soils,” “Cultural Resources,” “Paleontological Resources,” “Visual Resources,” “Water Resources” and “Wilderness Characteristics.”

Figure 3. Percentage of Comments by “Resources” Subcategories.



Among subcategories in the “Resource Uses” category, “Livestock Grazing” (44.3%) and “Comprehensive Trails and Travel Management” (30.4%) received the most comments (Figure 4). The “Other” subcategory (15.2%) included topics such as “Minerals,” “Recreation Visitor Use and Safety,” “Renewable Energy,” “Land Tenure Adjustment,” and “Military.”

Figure 4. Percentage of Comments by “Resource Uses” Subcategories.



Issues and Concerns Raised by the Public during Scoping

Comments submitted during the scoping period addressed many issues and concerns. Issues and concerns were categorized by major topic area and subcategories. The following section summarizes the comments in order to provide a description of the issues and concerns raised by the public, organizations and businesses, and government agencies during the scoping period. This summary does not necessarily reflect the issues and concerns of the BLM or Jarbidge FO nor does it guarantee the issue or concern raised will be addressed in the RMP.

General Planning

General Resource Management: All comments on “General Resource Management” could be categorized into one of the following issue areas:

Overall Management Direction/Goals/Objectives: Flexibility should be a priority to ensure the RMP remains relevant throughout the life of the plan and to allow for site-specific and adaptive management decisions that do not require additional NEPA analysis. The concept of multiple use was mentioned several times. Comments expressed concern that the area was primarily used for livestock grazing and should be used for other purposes such as sustaining the landscape for future generations, restoration of native vegetation, and preserving the Jarbidge planning area’s unique scenic and cultural resources. Many comments requested a shift in focus from livestock grazing to resource preservation and protection.

Information and Data: Comments requested inventories and monitoring of resources in the planning area. The BLM was encouraged to assess cumulative effects when analyzing data and evaluating activities. Support was given for scientific inquiry efforts within the planning area.

Adaptive Management: Comments were made in support of and against adaptive management. Comments ranged from having adaptive management as a key component

in any preferred alternative, to only using adaptive management where mandatory, to minimizing the use of adaptive management.

Coordination/Consultation: The BLM should coordinate with Nevada agencies to ensure the needs of wildlife populations shared between Nevada and Idaho. Coordination with other Federal agencies was requested, and the importance of consultation with Tribes was emphasized.

Relationship to Applicable Laws, Regulations, and Policy: The BLM should follow the Federal Land Policy and Management Act and the National Environmental Policy Act when preparing the RMP.

Resources

Air Quality: The BLM should preserve the clarity and quality of the high desert air and scenic vistas.

Soils: Comments expressed concern for the present condition of soil in the planning area, including microbiotic crusts. The effects of roads, livestock, management activities, and wind energy development should be examined. Soil standards should be developed to monitor the condition of the soil. Attention should be paid to mitigate invasions of non-native plant species when soil disturbance is necessary and to prevent erosion, compaction, and desertification.

Water Resources: Comments on water resources focused on compliance with the Clean Water Act and State water quality standards and the impact of livestock on water quality. Comments requested the BLM to protect water quality and collect baseline water quality data, specifically when livestock are present. Water developments should also be monitored to prevent depletion of springs, seeps, and streams.

Vegetation Management: All comments on “Vegetation Management” could be categorized into one of the following issue areas:

Upland Vegetation: Comments centered on native and non-native upland vegetation. The BLM should conduct an inventory of upland vegetation and evaluate the impacts of current management practices on native grasses and sagebrush in order to preserve them. Attention should be given to the invasion of non-native plant species particularly along roadsides. Exotic shrubs, specifically forage kochia, should be eradicated. Juniper, cultivars of bluebunch wheatgrass, and rabbit brush were also mentioned as species of concern.

Riparian Areas and Wetlands: The BLM should inventory riparian areas and assess the impact of multiple uses such as livestock grazing on those areas. Roads, trails, campsites, and recreational facilities should not be placed in riparian areas. Special management should be applied to intermittent and ephemeral drainages and areas not at Properly Functioning Condition.

Noxious Weeds and Invasive Plants: The prevention and control of noxious weeds should be a top priority for the BLM. Comments noted that noxious weeds are spread through

activities such as mineral exploration, livestock grazing, road maintenance, and the presence of vehicles and off-highway vehicles (OHVs) in the area. Comments recommended ending grazing in infested areas, spraying specific areas, maintaining areas currently in healthy condition, and using seed mixes that could compete with noxious weeds while providing nutrition to livestock. Aerial chemical applications should be restricted and herbicides should only be applied on the ground. The BLM should study noxious weed invasions and examine the relationship between the presence of noxious weeds and threats to ecosystem health. Burr buttercup, cheatgrass, and Scotch thistle were identified as noxious weeds and invasive plants of concern.

Restoration: Comments supported restoring lands in the planning area to their native state. An important aspect of the concept of "native" involved restoring native plant species, particularly sagebrush. The BLM should identify lands for restoration, focus on protection of native vegetation, and repair damage caused by livestock. One suggestion for restoration required road obliteration.

Reference Areas: Several comments proposed creating reference areas for protection of resources and comparison to areas with livestock. These areas should contain intact and diverse vegetation and wildlife. One comment proposed creating scientific reference sites of greater than 10,000 acres.

Fragmentation: Roads, fences, pipelines, and other facilities can lead to habitat fragmentation. The BLM should analyze the impacts of fragmentation and minimize future disturbances.

Fish and Wildlife: The BLM should strive for viable populations of native species as well as monitor these species. The BLM should actively protect these species by imposing visitor restrictions and examining current range improvements to determine any harm to fish and wildlife. Interest was expressed in the designated Sikes Act Wildlife Tracts Program.

Terrestrial Wildlife Species: Information should be collected on special status species and species of concern. Grazing should be prohibited during sensitive times such as nesting. The RMP should minimize harm to ground-dwelling mammals and prevent predation problems before they arise from predators that may inhabit the area in the future.

Wildlife Habitat: The BLM should address how it will provide habitat capable of supporting viable populations of plant and animal species. The BLM should assess the status of wildlife habitat and report actual, not potential, habitat. The BLM should also recognize that habitats transcend boundaries. Comments suggested establishing long-term breeding bird monitor plots and restoring mule deer winter range and sage grouse habitat.

Animal Damage Control: Comments outlined harm caused by predators, grasshoppers, Mormon crickets, and APHIS spraying for grasshoppers and crickets. Harm caused by these animals and insects should be examined.

Fish and Aquatic Species: Information on aquatic biota such as fish, fairy shrimp, and invertebrates should be collected from all springs in the management area. The BLM should establish long-term monitoring of the effects of resource use on riparian and aquatic macroinvertebrates.

Special Status Species: The BLM should have goals for the protection and recovery of special status species. Comments varied in the degree of their support for special designations designed to protect special status species. The BLM should inventory sites for special status species, prevent commercial activity on such species' habitats, develop strategies to conserve and recover species, and work collaboratively to manage species.

Several specific special status species were mentioned in the scoping comments. Protection of slickspot peppergrass should be a BLM priority. In order to protect sage grouse, the BLM should consult documents such as the Jarbidge Local Working Group Conservation Plan and Idaho State Sage-Grouse Habitat Plan. In addition, the BLM should gather baseline data on sage grouse, restore sage grouse habitat, manage breeding habitats, and prohibit cattle in habitat during breeding seasons. Finally, the BLM should consult with the USFWS on Integrated Pest Management in drainages and prohibit any activities likely to increase stream temperatures in order to protect bull trout.

Wild Horses: Comments expressed mixed opinions on wild horses in the planning area. Comments in support of wild horses called for reductions or prohibitions of livestock, prohibition of OHV events, and removal of fences in the Herd Management Area (HMA). The BLM was encouraged to increase distribution of water for wild horses. Other comments noted wild horses pose a threat to seedlings if their numbers are not controlled.

Wildfire Management: Several methods were suggested for fire prevention and lessening the severity of fires. These included grazing to create firebreaks, prescribed fires, removing excessive fuel loads, and fine fuels management. The RMP should include a description of fire frequency for the area. Comments on fire rehabilitation centered on ensuring the return of native plants, particularly sagebrush, and preventing weed invasion. The need for seedlings to stabilize soils and quickly respond to other resource needs following a wildfire was recognized and encouraged. Some comments promoted the removal of grazing to accomplish this goal while others stated livestock should not be shifted. Fires could provide an opportunity to realign or reconfigure pastures, but the addition of fences should not be part of fire rehabilitation. The BLM should coordinate with the National Park Service (NPS) to develop a holistic approach for post wildfire issues.

Cultural Resources: Comments supported protecting cultural resources. Cultural resource surveys should take place near springs and anywhere grazing occurs. Cultural resources should be protected from destruction caused by livestock. Possible steps for protecting resources include site stabilization, fencing, signing, closures, rehabilitation, increased monitoring or interpretive development, and designation. The BLM should cooperate with NPS to protect cultural resources.

Paleontological Resources: Paleontological sites should be inventoried and protected from damage caused by livestock grazing. The BLM should cooperate with NPS to protect paleontological resources.

Visual Resources: Visual resource values should be maintained by protecting scenic, cultural, tribal, and natural values in the landscape as well as the darkness of night skies. Visual Resource Management (VRM) standards should be applied to protect sagebrush communities.

Wilderness Characteristics: Lands with wilderness characteristics should be protected or preserved.

Resource Uses

Livestock Grazing: Comments on livestock grazing ranged from continuing as is, to continuing with restrictions, to removing it altogether. Comments in support of grazing stated it is economically viable, ecologically sustainable, and inhibits the incidence of wildfire. The BLM was encouraged to continue to work with agriculture and to permit grazing, but not overgrazing. Comments in support of reduced or restricted grazing stated grazing should not be allowed to harm the landscape, stocking rates should be based on drought seasons, livestock should not be allowed within one mile of the canyon, grazing should not be allowed in the least damaged areas, and any new land acquired by the BLM should not be grazed. It was noted the BLM should minimize the impacts of grazing on herbaceous species, sagebrush, and sage grouse and establish a sustainable level of grazing.

Concerns were expressed on the relationship between grazing and the spread of noxious weeds and invasive plants and stream degradation. Criteria need to be set for grazing suitability determinations. A recommendation was made to manage existing and future crested and intermediate wheatgrass and other introduced forage seedings as seedings. This would entail allowing moderate grazing use under deferred-rotation grazing management. In addition, brush control should be considered when the amount of brush reduces forage production. The effects of practices such as fencing, roading, water development, water hauling, and feed/supplement tub placement should be examined to assess impacts such as increases in mosquitoes, cheatgrass invasion, and habitat fragmentation.

Allotment Administration: Comments requested numerous allotment boundary changes and raised issues concerning the structures and facilities for livestock management. Concerns were expressed about roading linked to livestock facility construction and the effect of livestock facilities on native species. The BLM was encouraged to remove livestock, specifically in sage grouse habitat; stop water hauling; use specific stubble height and trampling standards instead of rangeland projects to achieve goals; and minimize the impacts of livestock facilities. Comments were made in support of maintaining facilities, allowing fencing, and inventorying livestock projects.

Grazing Permits: Comments requested the retirement of grazing allotments, resting of pastures, and reduction of grazing in sage grouse habitat. Livestock should be reduced in functioning-at-risk and nonfunctioning areas. Comments also requested maintaining current levels of permitted use as long as monitoring data showed the land could support

it. The RMP should allow for grazing decisions to be issued without additional NEPA documentation.

Varying opinions were expressed as to whether permitted animal unit months (AUMs) should be increased or decreased and if grazing seasons should be yearlong or limited to specific seasons. Recommendations were made to phase-out domestic sheep grazing, eliminate the overlapping of sheep and cattle use, and allow horse grazing permits. Forage allocation recommendations included permitting livestock use to between 50 to 60% of total forage production and allocating excess forage on a permanent basis.

Comments requested requiring clear, measurable standards of use and objectives for livestock grazing. The BLM should conduct annual use pattern mapping and remove livestock when standards are not met. The BLM should monitor water quality yearly. Grazing should be eliminated in riparian/wetland areas and livestock supplements should be located at least a quarter mile away from those areas. Breeding and nesting areas of sage grouse, migratory birds, and pygmy rabbits should be protected. All hay and feed used for livestock should be certified as weed-free.

The process for retirement or third-party buyouts of grazing permits should be outlined. Allotments needing protection should be identified and permits should be relocated or retired to prevent resource damage.

Recreation and Visitor Services: Recreational use in the planning area created concerns for weed invasion, vandalism, litter, and safety. The impacts of recreation should be identified and addressed in the RMP. Comments expressed support for continued recreational use and the identification of potential recreational trails; however, recreation should not impact cultural, historical, tribal, paleontological, geological, biological, or other values.

Non-OHV Recreation: Recreational use should include hunting, fishing, hiking, bicycling, walking, horseback riding, sightseeing, and wildlife viewing.

OHV Recreation: Suggestions on management for OHV recreation included creating weed-cleaning stations, ending OHV races in special status species habitats and horse herd areas, exercising caution when issuing special recreation permits, and working to educate user groups to promote responsible OHV behavior and direct users to appropriate places to ride. Specific trail routes were requested.

Comprehensive Trails and Travel Management: All comments on “Comprehensive Trails and Travel Management” could be grouped into one of the following subcategories:

Access: Comments expressed concern that BLM intended to close roads to the public. Many comments stated BLM should keep existing road access; current roads should not be closed and new roads should not be created. The BLM should increase its level of communication regarding which roads are open. Roads should be clearly marked so users know what trails they can be on and do not inadvertently create new ones. The RMP should address the emerging area of off-road motorcycle use.

The BLM should describe the criteria it uses to close roads. Vehicles should not be allowed in Wilderness Study Areas, areas with sensitive or highly erodible soils, or areas where there will be conflicts with wildlife. The BLM should determine acceptable route density while providing for reasonable access.

Travel Management Plan: A Travel Management Plan addressing areas for use, primary users, road density, habitat fragmentation, and impacts on critical habitat should be completed. It was requested access be increased or maintained for Brown's Bench, the China Creek Trail, the Bruneau canyon, and Idaho Centennial Trail. Access should be limited for the Inside Desert and prohibited to dirt bikers in the Thompson Allotment.

Road Maintenance and Construction: Road maintenance and limitations on maintenance and upgrading on all roads should be clearly defined. Rehabilitation activities should occur promptly if unauthorized maintenance occurs. Parking lots and turnouts should be located in areas that have already been disturbed.

Effects of Roads: The BLM should inventory existing roads including highways, county roads, and major roads. Monitoring of how increased visitation affects resources and landscapes should occur.

Minerals: If mining exploration is allowed, the effects on resources in the management areas should be examined.

Renewable Energy: Most comments supported wind power development on BLM land although the BLM should minimize the impacts of such development and protect key habitats, endangered species, and other wildlife from harm.

Right-of-Way Corridors/Communication Sites: The BLM should analyze the suitability of existing and pending communication sites. Limited communication sites should be established based on their minimal impact to the land. Consideration of new sites should be guided by evaluating the value of uninterrupted scenery and dark night skies.

Protection of existing rights-of-way should be exercised. Power lines across or near important habitats should be buried. Comments on areas that should be withdrawn or excluded from future communication sites ranged from the entire planning area, to areas of special designation, to areas with sensitive and important wildlife and wildland habitat.

Land Tenure Adjustment: The RMP should list and prioritize lands for sale or exchange. Criteria for lands sought for acquisition could include lands that will further wildlife, recreation, wilderness, and resource protection goals or are located in key habitat areas. Several comments expressed the desire to purchase public land in the planning area.

Military: The BLM should assess the impact of military activities in the planning area.

Special Designations

Special Designations: The BLM should consider areas with important or unique characteristics for consideration as areas of special designation. Current areas of special designation should be withdrawn from mining and mineral leasing and should have monitoring plans.

Areas of Critical Environmental Concern: There was support for designating new Areas of Critical Environmental Concern (ACECs). One comment also recommended adjusting the boundaries of the ACEC for big horn sheep to include lands actually used by the sheep.

Wild and Scenic Rivers: The BLM should evaluate all rivers for Wild and Scenic River eligibility.

Wilderness Study Areas: The BLM should be prepared to protect lands that may be released from Wilderness Study Area (WSA) designation. The BLM should evaluate the impacts of livestock grazing on WSAs and consider closing routes in WSAs.

Social and Economic

Socioeconomic Analysis: An honest economic analysis should be conducted. The BLM should focus on the small communities within and near the boundaries of the planning area and avoid decisions that may unnecessarily burden those communities financially.

Education and Outreach: The BLM should focus on public outreach and education as part of the RMP.

Public Safety: The BLM should require posted signs in areas where pesticides or herbicides are applied.

Anticipated Decisions to be Made

Following the initial scoping period, the ID Team refined the tentative decisions to be addressed in the RMP based on the public comments received and summarized above; issues and concerns raised during briefings, consultations, and coordination efforts; and issues previously identified by the team. The anticipated decisions to be made are displayed by major topic and subject category in the tables below. The phrase “uses and activities” is used in many of the questions. “Uses” refer to uses of public land by the public. “Activities” refer to any action conducted by the BLM or other authorized government agency on public land.

The ID Team will develop a concise list of proposed issues by grouping relevant questions from the list below into broader issue statements. These issue statements will guide the formation of alternatives and the resulting impacts analysis. They will also reflect the most pressing concerns within the planning area.

The RMP will also contain decisions as directed by Appendix C of the BLM Land Use Planning Handbook (BLM Handbook H-1601-1). Many of these decisions are not pressing concerns and will likely be the same across all alternatives.

Table 8. Anticipated Decisions To Be Made: Tribal Treaty Rights and Trust Responsibilities.

Tribal Treaty Rights and Trust Responsibilities	
How will uses and activities be managed to protect Tribal rights and interests?	

Table 9. Anticipated Decisions To Be Made: General Planning.

General Planning	
General Resource Management	How will flexibility be built into the RMP to ensure relevancy throughout the life of the plan?
	To what extent will adaptive management be used?

Table 10. Anticipated Decisions To Be Made: Resources.

Resources		
Air Quality	How will management activities be conducted to meet or surpass air quality standards?	
Soils	How will uses and activities be managed to mitigate impacts to soil productivity and microbiotic crusts?	
	How will uses and activities be managed to mitigate wind and water erosion and compaction?	
Water Resources	How will uses and activities be managed to meet or surpass water quality standards?	
	How will springs, seeps, and streams out of compliance with water quality standards be improved?	
	How will BLM ensure water availability for multiple-use management and functioning of healthy riparian and upland systems?	
Vegetation Management	Upland Vegetation	How will uses and activities be managed to maintain and/or restore healthy upland plant communities?
		How will remaining sagebrush and forbs in native grasslands/shrublands be protected from noxious weeds and invasive plants?
		How will sustainable forage be provided for wildlife, wild horses, and domestic livestock while also providing for the maintenance and restoration of native plant species?
		How will aspen, juniper and other coniferous and deciduous trees be managed within the Jarbidge FO?
	Riparian Areas and Wetlands	How will uses and activities be managed to maintain and/or improve riparian habitat to move toward proper functioning condition (PFC)?
		How will streams, wetlands, springs, and seeps where function is impaired be improved?
		How will existing infrastructure be altered to reduce degradation of intermittent or perennial streams?
		How will natural riparian functions be maintained and/or improved to benefit water storage, groundwater recharge, water quality, and fish and wildlife values?

Resources		
Vegetation Management	Noxious Weeds and Invasive Plants	What combination of management actions, activities, and restrictions will be used to reduce or control the spread and impacts of noxious weeds and invasive plants on public lands?
		How will noxious weeds and invasive plants be managed while also considering the effects on non-target and special status plant species?
	Restoration	What lands are suitable for restoration and how will they be prioritized?
		What combination of management actions, activities, and restrictions will be used to restore these areas?
	Reference Areas	What areas are suitable to serve as reference areas?
		How will reference areas be managed?
Fragmentation	How will uses and activities be managed to reduce habitat fragmentation for various species?	
Fish and Wildlife	How will uses and activities be managed to maintain and/or enhance fish and wildlife habitats?	
	What actions are needed to maintain and restore wildlife habitat? Where are these actions needed? How will these actions be prioritized?	
	What actions are needed to maintain and/or restore aquatic habitat for fish? Where are these actions needed? How will these actions be prioritized?	
	How can critical mule deer, bighorn sheep, and elk summer and winter ranges, as well as other big game habitats and habitats for migratory bird species and sage grouse, be managed?	
Special Status Species	How will the BLM manage uses and activities to protect special status species and their habitats?	
	How will the BLM restore habitat used by special status plant and animal species in uplands, riparian zones, or aquatic habitats?	
	How can populations of special status plant and animal species be restored through reintroduction and/or augmentation in areas with suitable habitat?	
Wild Horses	What is the appropriate management level (AML) for the Saylor Creek Wild Horse Herd Management Area (HMA)?	
	How will wild horses be managed to maintain and/or enhance habitat quality in the HMA?	
	How can the BLM manage the HMA in accordance with the AML to ensure a balance between the wild horse population, wildlife, livestock, and the vegetation, and to maintain and/or enhance habitat quality within the HMA?	
	How can rangeland improvements be constructed and maintained in ways that are beneficial to wild horses and are consistent with other objectives and land use allocations?	
Wildfire Management and Fuels Management	How should the BLM manage wildland fire and hazardous fuels to meet and be consistent with resource objectives while protecting life and property?	
	Where and how will prescribed fire be authorized to reduce fuels and restore habitats? What areas will be subject to constraints that could limit the use of prescribed fire (e.g., Idaho Department of Environmental Quality air quality standards)?	
	How can burned areas be managed to encourage the recovery and restoration of native species in a cost effective manner?	

Resources	
Wildfire Management and Fuels Management	How can burned areas be managed to protect them from the spread of noxious weeds and invasive plants?
	How will past and future rehabilitation areas be managed to ensure adequate protection of the soil and the continuation of hydrologic and nutrient cycles?
	How can wildfire suppression be managed to reduce impacts on special designated areas, special status species habitats, native plant communities, and watersheds; reduce the intensity, frequency, and size of future wildland fires; and minimize the spread of noxious weeds and invasive species?
	What additional tools can be made available and implemented to reduce acreage lost to wildfires each year, including the reconfiguration of suppression resources?
Cultural Resources	How will uses and activities be managed to preserve and protect significant archaeological and historic resources for present and future generations?
	How will uses and activities be managed to preserve and protect traditional cultural properties and sacred sites?
	How will cultural resources, including traditional cultural properties and sacred sites, be protected from vandalism and theft?
Paleontological Resources	How will the BLM manage paleontological resources to maintain or enhance significant scientific, educational, and recreational values while protecting them from vandalism and theft?
Visual Resource Management (VRM)	How will VRM objectives be applied to the planning area to manage different visual resource values?
Wilderness Characteristics	How will lands with wilderness characteristics be managed?
Cave Resources	How will significant caves in the planning area be managed to protect them from overuse or vandalism?

Table 11. Anticipated Decisions To Be Made: Resource Uses.

Resource Uses	
Livestock Grazing	What lands will be available and unavailable for livestock grazing?
	How will livestock grazing be managed to meet the standards for rangeland health and grazing management guidelines?
	What facilities for livestock management will be allowed and how will they be managed?
	How will allotment boundaries be adjusted and which adjustments will be made in the RMP?
	What guidelines will be established for drought management and future water developments related to livestock grazing?
	How can livestock grazing be managed to reduce impacts on special designated areas, special status species habitats, native plant communities, and watersheds; reduce the intensity, frequency, and size of future wildland fires; and minimize the spread of noxious weeds and invasive species?

Resource Uses	
Recreation and Visitor Services	How can demands for recreational uses be met while mitigating impacts to other land use values?
	What range of recreational opportunities can be provided to meet existing and anticipated demands? How will these opportunities be managed?
	Do the existing Special Recreation Management Areas (SRMAs) address the primary recreation tourism markets and the demand for targeted recreation opportunities and outcomes?
	How will Special Recreation Permits be managed?
	How can OHV use be managed to mitigate the impacts on wildlife distribution and habitat quality; reduce impacts on special designated areas, special status species habitats, native plant communities, and watersheds; reduce the intensity, frequency, and size of future wildland fires; and minimize the spread of noxious weeds and invasive species?
Comprehensive Trails and Travel Management	What areas should be open, limited, or closed to vehicles?
	How will the status of trails (i.e., open, closed) be communicated to the public and enforced?
	How can transportation and public access be managed to reduce impacts on special designated areas, special status species habitats, native plant communities, and watersheds; reduce the intensity, frequency, and size of future wildland fires; and minimize the spread of noxious weeds and invasive species?
	How will transportation and public access be managed to mitigate impacts to other resource values, reduce user conflicts, and provide both motorized and non-motorized recreation opportunities for public land visitors?
Minerals	How will mineral and energy development activities be managed to provide for mineral products and energy while mitigating impacts to other natural resources?
	On areas open to mineral development, what restrictions will be placed on exploration and development activities to protect resource values?
	Should any areas be recommended for withdrawal from mineral development to protect other resource values?
Renewable Energy	Where will renewable energy developments (e.g., wind, solar, and geothermal) be allowed? How can impacts from these developments be mitigated?
Right-of-Way Corridors and Communications Sites	Where should right-of-way corridors be designated? What are the limitations on further development of existing utility, transportation, and communication rights-of-way?
	What lands will be available for right-of way sites, including wind energy developments?
	On which public lands will corridors not be permitted? Are any avoidance or exclusion areas necessary?
	How can right-of-way corridors be managed to reduce impacts on special designated areas, special status species habitats, native plant communities, and watersheds; reduce the intensity, frequency, and size of future wildland fires; and minimize the spread of noxious weeds and invasive species?
Land Tenure Adjustment	Which lands should be available for disposal or exchange?
	Which lands are desirable for acquisition?
	Which lands should always remain in public ownership?
	How will future applications for Desert Land Entry be managed?

Table 12. Anticipated Decisions To Be Made: Special Designations.

Special Designations	
Special Designations	Where are special designations appropriate to protect unique resource values or provide unique recreation experiences?
National Historic Trails	How will activities on the Oregon National Historic Trail be managed?
Areas of Critical Environmental Concern (ACECs)	How should the current ACECs be managed? Is the current ACEC designation still appropriate in these areas?
	What other areas, if any, should be considered for ACEC designation?
Wild and Scenic Rivers	What rivers in the planning area, if any, are eligible for Wild and Scenic River designation?
Wilderness Study Areas (WSAs)	Is the current Jarbidge WSA release guidance still appropriate?

Table 13. Anticipated Decisions To Be Made: Social and Economic.

Social and Economic	
Social and Economic Sustainability of Local Communities	How will management of BLM lands affect the social and economic resiliency and sustainability of local economies?
	How can permitted uses and activities be managed to provide for the economic resiliency and sustainability of local communities?
	How can other allowed uses and activities be managed to provide for the economic resiliency and sustainability of local communities?
Education and Outreach	How will education, interpretation, and outreach activities be managed to improve understanding of resources and resource issues, protect resources, and mitigate resource impairment?

Issues and Concerns Raised that May Not Be Addressed

A number of participants made comments regarding issues and concerns that likely will not be addressed in the RMP because they should be addressed through policy or administrative action or because they are beyond the scope of the Jarbidge RMP. Comments on these items are valuable and appreciated, even though they will not be recommended for inclusion in the RMP. These comments will be considered when decisions are made on proposed projects, implementation plans, or day-to-day management.

The ID Team recommended 37 comments be classified as more appropriately addressed by administrative action or current laws, regulations, or policies. For example, comments suggesting improving communications between BLM and the public, repairing broken signs, or verifying property boundaries can be addressed administratively in day-to-day management activities. Several participants provided suggestions for how to conduct the socioeconomic analysis for the RMP; while their suggestions will be considered, the RMP’s socioeconomic analysis will follow the process outlined in the BLM Planning Handbook. There were also multiple comments

regarding management of livestock grazing that are addressed by BLM's grazing regulations and policies (e.g., requirements for bird ladders, ownership of range improvements, enforcement of grazing permit terms). Bonding requirements for mining, right-of-way permit holders, and special recreation permit holders are also addressed in current regulations and policies. Lastly, current BLM policy does not allow for designating new Wilderness Study Areas in the land use planning process.

The ID Team recommended 68 comments be classified as beyond the scope of the RMP. Of these, 23 comments were requests for actions beyond BLM's authority or jurisdiction to include in an RMP. For example, some participants requested that "authority" or "deference" be granted to local sage grouse working groups; while this is not within BLM's authority, the ID Team will consider the recommendations of the local sage grouse working groups when developing alternatives and analyzing impacts. Several comments requested actions on issues that are managed by other Federal or State agencies, such as water rights, hunting seasons, animal control, and critical habitat designation, while other comments requested items that would require Congressional action (e.g., wilderness designation). Also included in this category were requests for action on public lands outside the planning area or on private land. The Jarbidge RMP will not make decisions for either of these lands.

The ID Team recommended 38 comments be classified as beyond the scope of the RMP because they would be more appropriately addressed at the implementation level. These were often site-specific requests for particular projects. For example, there were several requests for specific range improvements and specific on/off dates for livestock; these topics will be discussed at a more general level in the RMP. Many comments were about prescribed fire and fire rehabilitation. Guidelines and criteria for these and other types of vegetation treatments (e.g., mechanical, chemical, biological) will be discussed in the RMP as part of the toolbox for vegetation management, but site-specific projects will be addressed at the implementation level. There were multiple requests for BLM to include a detailed travel management plan within the RMP. The RMP would address travel management planning at a broader scale, such as area designations (open, limited, closed) and criteria for route designation. However, the full travel management plan would be completed after the signing of the Record of Decision. There were also comments requesting specific procedures for unspecified future implementation-level actions; these will be discussed in the context of Standard Operating Procedures.

Finally, the remainder of the comments the ID Team recommended as beyond the scope of the RMP were requests for data collection or analysis that is not required in the RMP and would only be considered as they pertain to proposed alternatives.

Valid Existing Management to be Carried Forward

The Jarbidge FO is currently managed under the 1987 Jarbidge RMP and its four amendments. The revised Jarbidge RMP may result in the continuation of some existing land use planning decisions and the development of new land use planning.

Special Designations and Nominations

The Jarbidge FO manages approximately 95,000 acres of the three Wilderness Study Areas (WSAs) within the planning area. Similarly, the Jarbidge FO manages approximately 93,000

acres of the three Areas of Critical Environmental Concern (ACECs) within the planning area. There are also three river segments totaling approximately 100 miles that were previously recommended as suitable for designation in the Wild and Scenic River System. Many of these special designations overlap on the ground.

A nomination to create a Sagebrush Sea ACEC in the southern portion of the planning area was submitted during scoping, as well as nominations to retain the existing ACECs: the Sand Point Paleontologic, Geologic, and Cultural Resource ACEC, the Bruneau/Jarbidge River ACEC for Bighorn Sheep Habitat and Cultural Resources, and Salmon Falls Creek Canyon ACEC. There was also a suggestion to change the boundary of the Bruneau/Jarbidge ACEC to more accurately reflect the area used by bighorn sheep. The following waterways were nominated for study and possible inclusion in the Wild and Scenic River system: Dave Creek, the East Fork of the Jarbidge River, the West Fork of the Jarbidge River, the Jarbidge River, the Bruneau River, lower portion of Clover Creek, and Salmon Falls Creek.

C. DRAFT PLANNING CRITERIA

Planning criteria guide the development of the RMP, ensure that it is tailored to the identified issues, and deter unnecessary data collection and analysis. Planning criteria also streamline the plan's preparation; establish standards, rules, and measures to be used; guide and direct the resolution of issues through the planning process; and indicate factors and data that must be considered in making decisions.

The following general planning criteria will be considered in developing the RMP.

- The plan will comply with all applicable laws, regulations, and current policies, including, but not limited to, those referenced in Appendix 2 (page 29).
- The plan will comply with the September 30, 2005, Stipulated Settlement Agreement in the case of Western Watersheds Project v K Lynn Bennett, under the jurisdiction of the District Court, District of Idaho.
- The plan will be collaborative in nature and will involve the public throughout the process by considering perspectives, data, scientific literature, and other input.
- The plan will strive to ensure that its management decisions are complementary to other planning jurisdictions and adjoining properties, within the limits described by law and Federal Regulations, including the plans, programs, and policies of Indian Tribes, other Federal agencies, and State and local governments.
- The plan will comply with Environmental Justice review requirements.
- The plan will recognize all valid existing rights.
- The plan will consider the quantity and quality of non-commodity resource values, as well as future needs and demands for existing or potential resources and values.
- The plan will consider the past, present, and reasonably foreseeable use and of public and adjacent lands and the direct, indirect, and cumulative impacts of these uses.
- The plan will consider the environmental effects of uses and management activities.
- The plan will consider the social and economic values and effects, as well as public welfare and safety.

- The plan will consider the existing management outlined in the 1987 Jarbidge RMP and its amendments.
- The plan will establish goals, objectives, desired future conditions, allowable uses, and management actions as described in the BLM Land Use Planning Handbook (BLM Handbook 1601-1).

D. DATA SUMMARY AND GAPS

Data needs for the Jarbidge planning effort were identified in the Preparation Plan for the Jarbidge RMP. Many of these data needs were related to requirements of the Stipulated Settlement Agreement including an Ecological Site Inventory, and inventory and monitoring of grazing allotments and special status plants and animals. Data is being collected on fish and wildlife, riparian areas, OHV routes, and range infrastructure. A cultural resource overview and an ethnographic study are underway, and a socioeconomic workshop for the planning area has been scheduled. An agreement with the Idaho Conservation Data Center will facilitate filling some of the data gaps for special status species with modeling data. A Wild and Scenic River eligibility study is being conducted.

Following this year's field season, all of the data will be entered into GIS and analyzed. ID Team members will also be working to do field verification of data received as part of scoping comments. A data fair will be held during the winter to provide the public an opportunity to view the data that will be used to develop alternatives and management actions for the RMP.

E. SUMMARY OF FUTURE STEPS IN THE PLANNING PROCESS

The Jarbidge FO will work with the BLM Idaho State Office as it continues to prepare the RMP/EIS. In particular, the Jarbidge FO will seek concurrence from the BLM Idaho State Director on matters such as the ID Team's recommendations found in this report, issues to be addressed in the RMP, the approach for addressing those issues, and RMP alternatives.

The BLM will continue to keep the public informed and involved throughout the development of the Jarbidge RMP. The Jarbidge RMP website (www.blm.gov/rmp/id/jarbidge) will be updated as appropriate, and newsletters will be sent as pertinent news becomes available.

The BLM welcomes public input at any time during the project. The next steps in the RMP will be development of the Analysis of the Management Situation, the Desired Future Conditions, and the draft alternatives. Processes for involving the public in these steps are expected to be similar to the processes used during scoping and may include open house meetings and/or workshops. The next required public comment period will be upon publication of the Draft RMP/EIS, which is anticipated in the fall of 2007. The draft document will be widely distributed and will be available on the Jarbidge RMP website. The availability of the draft document will be announced in the *Federal Register*, and a 90-day public comment period will follow with public meetings held in a variety of locations.

At the conclusion of the public comment period, the Draft RMP/EIS will be revised. A Proposed RMP/Final EIS will then be published. The availability of the proposed plan will be announced in the *Federal Register*, and a 30-day public protest period will follow. Public meetings will be held during the 30-day period. At the conclusion of the public protest period, the documents will again be revised, and the Approved RMP and Record of Decision will be published. Their availability will be announced in the *Federal Register*.

APPENDIX 1. NOTICE OF INTENT TO PREPARE THE JARBIDGE RMP

DEPARTMENT OF THE INTERIOR

Bureau of Land Management

[ID-200-1610-DO-081D]

Notice of Intent To Prepare a Resource Management Plan for the Jarbidge Field Office, Idaho and Associated Environmental Impact Statement

AGENCY: Bureau of Land Management,
Interior.

ACTION: Notice of intent.

SUMMARY: The Bureau of Land Management (BLM) Jarbidge Field Office, Twin Falls, Idaho intends to prepare a Resource Management Plan (RMP) with an associated Environmental Impact Statement (EIS) for the Jarbidge Field Office and by this notice is announcing public scoping meetings. The RMP will replace the existing 1987 Jarbidge RMP.

DATES: The BLM will announce public scoping meetings to identify relevant issues through local news media, newsletters, and the BLM Web site <http://www.blm.gov/rmp/id/jarbidge> at least 15 days prior to the first meeting. We will provide formal opportunities for public participation upon publication of the Draft RMP/EIS.

ADDRESSES: You may submit comments by any of the following methods:

- Web site: <http://www.blm.gov/rmp/id/jarbidge> (subject to change).
- E-mail: ID_Jarbidge_RMP@blm.gov.
- Fax: (208) 736-2375 or (208) 735-2076.
- Mail: Project Manager, Jarbidge Field Office, 2536 Kimberly Road, Twin Falls, Idaho 83301.

Documents pertinent to this proposal may be examined at the Jarbidge Field Office.

FOR FURTHER INFORMATION CONTACT: For further information and/or to have your name added to our mailing list, contact Rick Vandervoet, Acting Field Manager, Jarbidge Field Office, Telephone 208-735-2060; e-mail richard_vandervoet@blm.gov or Howard Hedrick, District Manager, Twin Falls District, Telephone 208-735-2060; email howard_hedrick@blm.gov.

SUPPLEMENTARY INFORMATION: This document provides notice that the BLM Jarbidge Field Office, Twin Falls, Idaho, intends to prepare a RMP with an associated EIS for the Jarbidge Field Office and announces public scoping meetings. The planning area is located in Twin Falls, Owyhee and Elmore Counties, Idaho and Elko County, Nevada. This planning activity encompasses approximately 1,366,000 acres of public land. The plan will fulfill the needs and obligations set forth by the National Environmental Policy Act (NEPA), the Federal Land Policy and Management Act (FLPMA), and BLM management policies. Preparation of an RMP for the Jarbidge Field Office is necessary to respond to a Stipulated Settlement Agreement under the jurisdiction of the District Court, for the District of Idaho; respond to changing resource conditions; respond to new issues; and prepare a comprehensive framework for managing public lands administered by the field office into the future. The BLM will work collaboratively with interested parties to identify the management decisions that are best suited to local, regional, and national needs and concerns.

The purpose of the public scoping process is to determine relevant issues that will influence the scope of the environmental analysis and EIS alternatives. These issues will also guide the planning process. You may submit comments on issues and planning criteria in writing to the BLM at any public scoping meeting, or you may submit them to the BLM using one of the methods listed in the **ADDRESSES** section above. Individual respondents may request confidentiality. If you wish to withhold your name and/or address from public review or disclosure under the Freedom of Information Act, you must state this prominently at the beginning of your written comment. The BLM will honor such requests to the extent allowed by law. All submissions from organizations or businesses, and from individuals identifying themselves as representatives or officials of organizations or businesses, are available for public inspection in their entirety.

To be most helpful, scoping comments should be received within 60 days following the publication of this notice in the **Federal Register**; however, coordination with the public will continue throughout the planning process.

Preliminary issues and management concerns have been identified by BLM personnel, other agencies, and in meetings with individuals and user groups. They represent the BLM's knowledge to date regarding the existing issues and concerns with current land management. The major issues that will be addressed in this planning effort include: Tribal treaty rights and trust responsibilities; availability and management of public lands for commercial uses (e.g., livestock grazing, minerals development); vegetation management (including invasive species, noxious weeds, riparian areas and wetlands); fire and fuels management; management of habitat for wildlife and special status species; management of transportation, public access, and recreational opportunities; land tenure adjustments, rights of way including wind energy and utility corridors; wild horses; and management of areas with special values.

After gathering public comments as to what issues the plan should address, they will be placed in one of three categories:

1. Issues to be resolved in the plan;
2. Issues to be resolved through policy or administrative action; or
3. Issues beyond the scope of this plan.

The BLM will provide an explanation in the plan for placing an issue in either category two or three. In addition to these major issues, the plan will address a number of management questions and concerns. BLM encourages the public to help identify these questions and concerns during the scoping phase.

Preliminary planning criteria include the following:

1. The plan will comply with all applicable laws, regulations, and current policies. This includes local, state, Tribal, and Federal air quality standards; as well as water quality standards from the Idaho Non-Point Source Management Program Plans.
2. The RMP planning effort will be collaborative in nature. The BLM will strive to ensure that its management decisions are complementary to other planning jurisdictions and adjoining properties, within the limits described by law and Federal Regulations.
3. The BLM will continue to manage all previously established Wilderness Study Areas for wilderness values and character until Congress either designates them as wilderness areas or releases them for other types of multiple use management.
4. The RMP will recognize all valid existing rights.
5. As part of this RMP process, BLM will analyze areas for potential designation as Areas of Critical Environmental Concern (ACEC) in accordance with 43 CFR 1610.7-2, and river corridors for designation under the Wild and Scenic Rivers Act.

The BLM will use an interdisciplinary approach to develop the plan in order to consider the variety of resource issues and concerns identified. Specialists with expertise in the following disciplines will be involved in the planning process: Rangeland management, botany, noxious weeds, minerals and geology, fire use, outdoor recreation and wilderness, archaeology, paleontology, wildlife and fisheries, lands and realty, hydrology, soils, sociology and economics, public affairs, and geographic information.

Dated: November 23, 2005.

K Lynn Bennett,

Idaho State Director, Bureau of Land

Management.

[FR Doc. E6-85 Filed 1-9-06; 8:45 am]

BILLING CODE 4310-GG-P

APPENDIX 2. APPLICABLE LAWS, REGULATIONS, AND POLICIES.

The development of the revised Jarbidge RMP will follow all applicable laws, regulations, and policies, including, but not limited to, those listed in the tables below. The ID Team will continue to refine this list throughout the planning process. For more detail on what is required by these documents, please refer to the original document.

Document Name	Requirements for RMP
Laws	
General Mining Law of 1872, as amended (30 USC 21)	Provides citizens, or those intending to become citizens, the opportunity to explore for, discover, and purchase certain valuable mineral deposits on public land.
Antiquities Act of 1906 (16 USC 431-433)	Authorizes permit process for scientific study of paleontological remains on public land and establishes penalties to control unauthorized use.
Migratory Bird Treaty Act of 1918 (16 USC 703 et seq.)	Establishes Federal responsibility for the protection of international migratory bird resources. Requires the BLM to provide habitat and minimize impacts to a variety of migratory birds (songbirds, raptors, shorebirds, etc.): all water troughs and open water storage tanks need to be fitted with wildlife escape ramps that are properly maintained and functional to minimize the killing of songbirds, raptors, and other wildlife; and adequate residual nesting/wintering herbaceous cover needs to be provided for a variety migratory wildlife and to meet the needs of prey species for raptors.
Mineral Leasing Act of 1920, as amended (30 USC 181)	Promotes the mining of coal, phosphate, oil, oil shale, gas, and sodium on the public domain.
Recreation and Public Purposes Act of 1926, as amended (43 USC 869)	Permits the Secretary of the Interior to dispose of any public lands for any recreational or public purpose.
Taylor Grazing Act of 1934, as amended (43 USC 315)	Establishes the authority for grazing administration on public land. Authorizes the establishment of grazing districts, regulation and administration of grazing on public lands, and improvement of the public rangelands. Directs the BLM to avoid injury; prevent overgrazing and soil deterioration on public lands; and provide for their orderly use, improvement, and development. Also authorizes the Secretary of Interior to accept contributions for the administration, protection, and improvement of grazing lands, and establishment of a trust fund to be used for these processes. Authorizes the BLM to continue to study erosion and flood control and to perform the work necessary to amply protect and rehabilitate such areas.
Soil Conservation and Domestic Allotment Act of 1935 (16 USC 590)	Authorizes the BLM to conduct and publish surveys and research relating to wind and water erosion.
Food, Drug, and Cosmetic Act of 1938 and the Miller Amendment to the Act (21 USC 301 et seq.)	Provides that tolerances must be established for pesticide residues in foods where these materials are necessary for the production of the food supply.

Document Name	Requirements for RMP
Federal Insecticide, Fungicide, and Rodenticide Act of 1947, as amended (7 USC 136 et seq.)	Requires all pesticides be registered with EPA.
Appropriations Act of 1952, McCarran Amendment (43 USC 666)	Allows agencies to be enjoined as a defendant in any suit for the adjudication of water.
Watershed Protection and Flood Prevention Act of 1954, as amended (16 USC 1001 et seq.)	Provides direction to coordinate with other Federal, State, and local agencies and collaborate with local watershed groups to prevent erosion or floodwater and sediment damage.
Sikes Act of 1960, as amended (16 USC 670 et seq.)	Provides for the conservation, restoration, and management of species and their habitats in cooperation with State wildlife agencies.
Water Resources Planning Act of 1962 (42 USC 1962 et seq.)	Encourages the conservation, development, and utilization of water and related resources of the United States on a comprehensive and coordinated basis by Federal, State, and local governments and private enterprise.
Classification and Multiple Use Act of 1964 (43 USC 1411-18)	Sets an objective for watershed management that includes protection, regulated use, and development of public lands to control runoff, erosion, siltation, and other consequences of uncontrolled water flows.
Land and Water Conservation Fund Act of 1964, as amended (16 USC 460 et seq.)	Authorizes planning, acquisition, and development of needed land and water resource facilities. Establishes a fund to preserve, develop, and assure access to outdoor recreation resources.
Wilderness Act of 1964 (16 USC 1131 et seq.)	Provides that the management of caves within designated wilderness is subject to regulations limiting the type of public and management activities that may occur.
Fish and Wildlife Coordination Act of 1965 (16 USC 661 et seq.)	Provides for wildlife conservation to be given equal consideration and coordination with other features of water resource development.

Document Name	Requirements for RMP
National Historic Preservation Act of 1966, as amended, (16 USC 470) in accordance with the National Programmatic Agreement*, the Idaho State Protocol Agreement, and implementing regulations 36 CFR 60 and 36 CFR 800	Provides BLM-specific policy and guidance for implementing cultural resource laws and regulations, directing BLM to consider the short- and long-term management of cultural resources. Requires Federal agencies, in consultation with the State Historic Preservation Officer, Native American Tribes, and other affected parties, to ensure that management actions do not inadvertently affect significant cultural resources. Requires agencies to actively inventory, monitor, and protect historic properties under their jurisdiction, including significant archaeological sites and traditional cultural properties; to cooperate with the Secretary, the Advisory Council on Historic Preservation, and other Federal and State agencies, local governments, and organizations and individuals to ensure that historic properties are taken into consideration at all levels of planning and development; and to the maximum extent possible, to afford the Advisory Council on Historic Preservation a reasonable opportunity to comment on the undertaking. Requires the BLM to conduct government-to-government consultation with Tribes to identify tribally significant religious or cultural properties that may be eligible for the National Register of Historic Places.
National Trails System Act of 1968 (16 USC 1241-1251)	Directs the BLM to manage the Oregon National Historic Trail to identify and protect the historic route and its historic remnants and artifacts for public use and enjoyment.
Wild and Scenic Rivers Act of 1968, as amended. (16 USC 1271 et seq.)	Directs that selected rivers that, with their immediate environments, possess outstandingly remarkable scenic, recreational, geologic, fish and wildlife, historic, cultural or other similar values, shall be preserved in free flowing condition, and that they and their immediate environments shall be protected for the benefit and enjoyment of present and future generations. Resources or values identified as “Outstandingly Remarkable” shall be protected on eligible, suitable, and designated Wild and Scenic River segments.
National Environmental Policy Act of 1969 (42 USC 4321 et seq.)	Requires the preparation of environmental impact statements for Federal projects that may have significant effects on the environment. Requires systematic, interdisciplinary planning to ensure the integrated use of the natural and social sciences and the environmental design arts in making decisions about major Federal actions that may significantly affect the environment.
Mining and Mineral Policy Act of 1970, as amended (30 USC 21)	Authorizes and governs prospecting and mining for hardrock minerals on public lands.
Clean Air Act of 1970, as amended (42 USC 7401 et seq.)	Requires the BLM to comply with all Federal, State, interstate, and local requirements, administrative authority, and processes and sanctions respecting the control and abatement of air pollution in the same manner, and to the same extent as any nongovernmental entity. Requires tribal consultation and intergovernmental coordination regarding smoke management.
Control of Pollution from Federal Facilities Act of 1970 (33 USC 1323)	Establishes that Federal agencies shall be subject to all requirements and administrative authorities, processes, and sanctions respecting the control and abatement of water pollution.
Horse Protection Act of 1970 (15 USC 1821 et seq.)	Identifies standards for horse health and soundness for shows, sales, and auctions.

Document Name	Requirements for RMP
Wild and Free-Roaming Horses and Burros Act of 1971 (16 USC 1331 et seq.)	Requires BLM to consult with Federal and State wildlife agencies and all other affected interests during land use and implementation planning for the management of wild horses and burros.
Federal Environmental Pesticide Control Act of 1972 (7 USC 136 et seq.)	Amends the Federal Insecticide, Fungicide, and Rodenticide Act, requiring a basis for registration to be whether a pesticide causes unreasonable adverse effect on man or the environment. Also requires the certification of all personnel who supervise or apply restricted pesticides and the proper storage and disposal of pesticides.
Endangered Species Act of 1973 (16 USC 1531 et. seq.)	Requires all Federal departments and agencies to conserve species listed by the Secretary of the Interior or Commerce as threatened or endangered and ensure the continued existence of listed species is not jeopardized and designated critical habitat of listed species is not destroyed or adversely modified. Requires consultation with the US Fish and Wildlife Service or National Marine Fisheries Service for all actions that may affected listed species or designated critical habitat or conference with the same agencies if actions are likely to jeopardize the continued existence of a proposed species or result in the destruction or adverse modification of proposed critical habitat.
Archeological and Historic Preservation Act of 1974 (16 USC 469)	Provides for the recovery and preservation of historical and archaeological data that might be lost as the result of a Federal construction project or a Federally assisted or licensed project.
Federal Noxious Weed Act of 1975 (7 USC 2801 et seq.)	Directs agencies to designate an office or person adequately trained in the management of undesirable plant species to develop and coordinate an undesirable plants management program, establish adequate funding, implement cooperative agreements with State agencies for management on undesirable plants, and establish integrated management systems to control or contain undesirable plant species.

Document Name	Requirements for RMP
Federal Land Policy and Management Act of 1976, as amended (43 USC 1701 et seq.)	<p>Provides for administration of public lands through the BLM and management of the public lands on a multiple use basis. Requires that the public lands be managed in a manner that will protect the quality of scientific, scenic, historical, ecological, environmental, air and atmospheric, water resource and archaeological values; that, where appropriate, will preserve and protect certain public lands in their natural condition; that will provide habitat for fish, wildlife and domestic animals; and that will provide for outdoor recreation and human occupancy and use. Also requires that public lands be managed in a manner that recognizes the need for domestic sources of minerals, food, timber, and fiber from the public lands.</p> <p>Requires land use planning, including public involvement, and a continuing inventory of resources. Requires BLM to integrate physical, biological, economic, and other sciences in developing land use plans. Authorizes acquisition of land consistent with the mission of the Department and land use plans; compliance with pollution control laws, review of land classifications in land use planning; modification or termination of land classifications when consistent with land use plans; management of the use, occupancy, and development of the public lands through leases and permits. Requires the range betterment fund be spent on aquatic and terrestrial wildlife habitat where domestic livestock grazing occurs.</p> <p>Provides for the creation of Areas of Critical Environmental Concern. Mandates that the BLM give priority to the designation and protection of ACEC's in the development and revision of land use plans.</p>
Surface Mining Control and Reclamation Act of 1977 (30 USC 1201)	Establishes a program for regulating surface coal mining and reclamation activities. Establishes mandatory uniform standards for these activities on Federal and State lands, including a requirement that adverse impacts on fish, wildlife, and related environmental values be minimized.
Clean Water Act of 1977, as amended (30 USC 1251)	Provides for protection, restoration, or improvement of water quality, including riparian/wetland areas. Requires Federal agencies to coordinate with State water quality programs such as the Idaho DEQ Total Maximum Daily Load program during the planning process and adhere to State water quality standards and plans (i.e., Idaho Non-Point Source Management Program Plans and Idaho State Water Quality Standards).
Safe Drinking Water Act Amendments of 1977 (42 USC 201)	Requires compliance with all Federal, State, and local statutes for safe drinking water.
Soil and Water Resources Conservation Act of 1977 (16 USC 2001)	Provides for conservation, protection, and enhancement of soil, water, and related resources.
American Indian Religious Freedom Act of 1978 (42 USC 1996)	Requires the BLM to consult with Tribes and individuals, as appropriate, to ensure that management actions do not inadvertently interfere with traditional Indian religious beliefs or practices, including access to sacred sites.

Document Name	Requirements for RMP
Public Rangelands Improvement Act of 1978 (43 USC 1901 et seq.)	Provides that public rangelands be managed to become as productive as feasible for watershed protection, livestock grazing, wildlife habitat, and other rangeland values, in accordance with management guidelines and the land use planning process. Provides funding for rangeland improvements, including stabilizing soil and water conditions and providing habitat for livestock and wildlife. Provides for research of horse and burro population dynamics.
Migratory Bird Conservation Act of 1979, as amended (16 USC 715)	Provides for the acquisition of lands determined to be suitable as an inviolate sanctuary for migratory birds.
Archaeological Resources Protection Act of 1979, as amended (16 USC 470 et seq.); implementing regulations 43 CFR 7	Requires the BLM to conduct government-to-government consultation with the Tribes to identify tribal religious or cultural locations on public lands, which archaeological activities, if permitted, could harm or destroy and to consider protective terms and conditions that could be attached to a permit to protect tribal religious or cultural locations from harm or destruction. Ensures long-term protection of Federally managed archaeological resources, establishes a permit system to authorize the excavation and removal of archaeological materials by qualified professionals, and provides penalties for unauthorized damage to archaeological materials that are over 100 years old.
Emergency Wetland Resources Act of 1986 (16 USC 3901)	Promotes the conservation of riparian and wetland areas by intensifying cooperative efforts among Federal, State, and private interests. Provides for planning, mapping, and inventory of wetlands.
Federal Cave Resources Protection Act of 1988 (16 USC 4301 et seq.)	Directs the BLM to identify significant caves and consider whether or not administrative designation is needed to provide adequate protection. Directs the BLM to ensure significant caves are considered in the preparation or implementation of any land management plan if the preparation or revision of the plan began after November 18, 1988, and foster communication, cooperation, and exchange of information between land managers, those who utilize caves, and the public.
Native American Graves Protection and Repatriation Act of 1990 (25 USC 301) and implementing regulations 43 CFR 10	Requires consultation with Tribal governments concerning permits for the excavation or removal of cultural items protected by the Act and for discoveries of protected items during land use activities.
Pollution Prevention Act of 1990 (42 USC 13101 et seq.)	Requires and encourages prevention and reduction of waste streams and other pollution through minimization, process change, and recycling of water.
Energy Policy and Conservation Act Reauthorization of 2000, as amended (PL 106-469)	Reauthorizes the President's authority to draw from the Strategic Petroleum Reserve and American membership in the International Energy Agency. Requires the Secretaries of the Interior and Energy to undertake a national inventory of onshore oil and natural gas reserves.
Energy Policy Act of 2005 (PL 109-58)	Encourages renewable resources including wind energy.

Document Name	Requirements for RMP
Wild Horse and Burro Sale-Authority, within Consolidated Appropriations Act of 2005 (PL 108-447, Sec 142)	Provides an avenue for implementation of sale and/or adoption of horses as directed.
Executive Orders and Memoranda	
Executive Order of April 17, 1926, Public Water Reserve No. 107	Withdrew and reserved important springs and waterholes on public land.
Executive Order 11514, Protection and Enhancement of Environmental Quality, March 5, 1970 (35 FR 4247)	Directs the Federal government to provide leadership in protecting and enhancing the quality of the nation's environment. Directs agencies to monitor, evaluate, and control the environment on a continuing basis to control pollution and enhance the environment.
Executive Order 11593, Protection and Enhancement of the Cultural Environment, May 13, 1971 (36 FR 8921)	Directs Federal agencies to inventory cultural properties under their jurisdiction and to nominate eligible properties to the National Register of Historic Places.
Executive Order 11644, Use of Off-Road Vehicles on Public Lands, February 8, 1972 (37 FR 2877), as amended by Executive Order 11989	Provides for public safety; the minimization of damage to soil, watershed, vegetation, and other public land resources; the minimization of harassment of wildlife or significant disruption of wildlife habitats; and the minimization of conflicts between OHV use and other existing or proposed recreational uses. Requires Federal agencies to designate "areas and trails" for off-road vehicle use or restriction and to develop regulations.
Executive Order 11738, Providing for administration of the Clean Air Act and the Federal Water Pollution Control Act with respect to Federal contracts, grants or loans, September 10, 1973 (38 FR 25161)	Directs each Federal agency to enforce the Clean Air and Clean Water Act in the procurement of goods and services.
Executive Order 11752, Prevention, control, and abatement of environmental pollution at Federal facilities, December 17, 1973 (38 FR 34793)	Mandates Federal agencies to provide national leadership to protect and enhance the quality of air, water, and land resources through compliance with applicable Federal, State, and local pollution standards.

Document Name	Requirements for RMP
Executive Order 11987, Exotic Organisms, May 24, 1977 (42 FR 26949)	Directs Federal agencies, to the extent permitted by law, to restrict the introduction of exotic species into natural ecosystems on public lands, encourage other entities to prevent such introduction, and restrict Federal programs' funds and authorities from exporting native species for introduction into natural ecosystems outside the United States.
Executive Order 11988, Floodplain Management, May 24, 1977 (42 FR 26951), as amended by Executive Order 12148	Provides for the restoration and preservation of national and beneficial floodplain values and the enhancement of the natural and beneficial values of wetlands in carrying out programs effecting land use.
Executive Order 11990, Protection of Wetlands, May 25, 1977 (42 FR 26961)	Directs that wetland and riparian habitats on public lands be identified, protected, enhanced, and managed.
Executive Order 12088, Federal Compliance with Pollution Control Standards, October 17, 1978 (43 FR 47707)	Requires Federal agencies to take all necessary actions for prevention, control, and abatement of environmental pollution with respect to Federal facilities and activities. Requires Federal agencies cooperate with the EPA and State, interstate, and local agencies in the prevention, control, and abatement of environmental pollution with respect to Federal facilities and activities; and consult with those agencies on the best techniques and methods available for the prevention, control, and abatement of environmental pollution.
Executive Order 12372, Intergovernmental Review of Federal Programs, July 14, 1982 (47 FR 30959)	Directs agencies to follow consistency provisions, referring to the Clean Water Act Non-Point Source Management Plan.
Executive Order 12898, Federal actions to address environmental justice in minority populations and low-income populations, February 11, 1994 (59 FR 7629)	Requires Federal agencies to identify and address disproportionately high and adverse human health or environmental effects of its programs, policies, and activities on minority populations and low-income populations in the United States.
Executive Order 12962, Recreational Fisheries, June 7, 1995 (60 FR 30769)	Directs all Federal agencies to enhance recreational fish species and provide increased recreational fishing opportunities.
Executive Order 13007, Indian Sacred Sites, May 24 1996 (61 FR 104)	Directs Federal agencies, in consultation with Tribal governments, to accommodate access to and ceremonial use of Indian sacred sites by Indian religious practitioners, avoid adversely affecting the physical integrity of such sites, and maintain the confidentiality of sacred sites. Also directs agencies to comply with the Executive Memorandum of April 29, 1994, "Government-to-Government Relations with Native American Tribal Governments."

Document Name	Requirements for RMP
Executive Order 13084, Consultation and Coordination with Indian Tribal Governments, May 14, 1998 (63 FR 27655)	Provides for consultation with Indian Tribal governments in developing regulatory policies that would significantly or uniquely affect Indian Tribal trust resources, treaty, or other rights.
Executive Order 13112, Invasive Species, February 3, 1999 (64 FR 6183)	Supports management activities that prevent the introduction of invasive plants and provide for their control. Seeks to minimize the economic, ecological, and human health impacts caused by invasive species.
Executive Order 13186, Responsibilities of Federal Agencies To Protect Migratory Birds, January 10, 2001 (66 FR 3853)	Directs each Federal agency taking actions that have, or are likely to have, a measurable negative effect on migratory bird populations to develop and implement a Memorandum of Understanding (MOU) with the US Fish and Wildlife Service that shall promote the conservation of migratory bird populations within 2 years.
Executive Order 13287, Preserve America, March 5, 2003 (68 FR 43)	Orders the Federal government to take a leadership role in protection, enhancement, and contemporary use of historic properties under their jurisdiction, and promote partnerships and intergovernmental cooperation for the protection and use of historic properties.
Executive Memorandum, Government-to-Government Relations with Native American Tribal Governments, April 29, 1994	Directs Federal agencies to assess the impacts of Federal government plans, projects, programs, and activities on Tribal trust resources and assure that Tribal government rights and concerns are considered during the development of such plans, projects, programs, and activities.
Regulations	
40 CFR 1500-1508	Provides CEQ guidance on implementing NEPA.
43 CFR 37.2, Cave Management Policy	Outlines the policy of the Secretary that Federal lands be managed in a manner which, to the extent practical, protects and maintains significant caves and cave resources. The type and degree of protection will be determined through the agency resource management planning process with full public participation.
43 CFR 1600	Provides BLM's land use planning regulations
43 CFR 1610.4, Resource Management Planning Process	Requires BLM to analyze social, economic, and institutional information.
43 CFR 1610.7-2, Designations of Areas of Critical Environmental Concern	Specifies that proposed ACECs must meet the relevance and importance criteria and require special management to protect the area and prevent irreparable damage to resources or natural systems.

Document Name	Requirements for RMP
43 CFR 2200.0-6 (b), Exchanges	Allows the authorized officer to complete a land exchange only after a determination is made that the public interest will be well served. When considering the public interest, the authorized officer shall give full consideration to the opportunity to achieve better management of Federal lands; meet the needs of State and local residents and their economies; and secure important objectives, including but not limited to: protection of fish and wildlife habitats, cultural resources, watersheds, wilderness and aesthetic values, enhancement of recreation opportunities and public access.
43 CFR 2801.2 (c), Objective of BLM's Right-of-Way Program	Promotes the utilization of rights-of-way in common with respect to engineering and technological compatibility, national security, and land use plans.
43 CFR 2802.10, Lands Available for FLPMA Grants	Require common use of the right-of-way for compatible uses (including subsurface and air space).
43 CFR 8340, Off-Road Vehicles	Establishes criteria for designating public lands as open, limited, or closed to the use of off-road vehicles and for establishing controls governing the use and operation of off-road vehicles in such areas.
50 CFR 400, Interagency Cooperation under the ESA	Provides consultation guidelines and procedures for Endangered Species Act consultation with the US Fish and Wildlife Service.
Departmental Guidance	
Secretarial Order 3602, American Indian Tribal Rights, Federal Tribal Trust Responsibilities, and the ESA	Requires Interior agencies to consult with Indian Tribes when as a result of compliance with the Endangered Species Act, agency actions to protect a listed species affect or may affect Indian lands, Tribal trust resources, or the exercise of American Indian Tribal Rights. Consultation under this Order should be closely coordinated with regional or field offices of the US Fish and Wildlife Service and/or NOAA-Fisheries for game and non-game species.
BLM Manuals	
BLM Manual 1553, Planning and Creating Graphics	Provides guidance on graphic arts for publications.
BLM Manual 1610, Land Use Planning	Contains BLM policy for conducting land use planning activities.
BLM Manual 1613, ACECs	Provides policy and procedural guidance on the identification, evaluation, and designation of ACECs in the development, revision, and amendment of RMPs and amendments of management framework plans not yet replaced by RMPs.
BLM Manual 1737, Riparian and Wetland Management	Provides guidance for identification, protection, restoration, and maintenance of natural and manmade wetlands.
BLM Manual 1790, NEPA	Contains BLM policy for NEPA analyses and documents.
BLM Manual 3031, Energy and Mineral Resource Assessment	Sets standards for gathering and analyzing information on energy and mineral resources for BLM land use decisions.

Document Name	Requirements for RMP
BLM Manual 4180, Rangeland Health Standards	Describes the authorities, objectives, and policies that guide the implementation of the Healthy Rangeland Initiative. Implementation will provide for the assessment of public land health, and for taking appropriate action to achieve, or make progress toward achieving, specified rangeland health standards.
BLM Manual 4700, Wild Free-Roaming Horse and Burro Management	Provides policy guidance for managing wild horses and burros.
BLM Manual 6500, Wildlife and Fisheries Management	Directs the BLM to ensure that big game/upland game species on the public lands are provided habitat of sufficient quantity and quality to sustain identifiable economic and/or social contributions to the American people. Directs the BLM to help perpetuate a diversity and abundance of waterfowl for the Nation by managing wetlands and other habitats on the public lands that are of importance to the maintenance of this international resource. Provides for management of wetlands on BLM lands to provide adequate water, retain functionality, create diverse native vegetation, and protect the associated water table from degradation. Requires the BLM to provide suitable habitat conditions for birds of prey on public lands through the conservation and management of essential habitat components, including habitat for prey species, especially in areas where birds of prey concentrate during some period of the year, or in important habitats where populations are suppressed.
BLM Manual 6521, State Agencies	Recognizes that State wildlife agencies have the authority to regulate wildlife harvest as well as set population goals for species. Directs BLM to provide adequate habitat to meet State wildlife agency population targets. Priority must be given to those introductions, release, trapping, and transplant actions intended to sustain threatened/endangered species and other animals that both agencies have mutually deemed of special interest.
BLM Manual 6525, Sikes Act Wildlife Programs	Provides that adequate protection be given to federally or state listed animal and plant species.
BLM Manual 6600, Fish, Wildlife, and Special Status Plant Resources Inventory and Monitoring	Provides policy guidance for conducting inventory and monitoring of fish, wildlife, and special status plant resources.
BLM Manual 6840, Special Status Species Management	Provides policy guidance, consistent with appropriate laws, for the conservation of special status species of plant and animals, and the ecosystems upon which they depend. Provides for responsibility for conducting and maintaining current inventories for special status species on public lands. Requires that BLM implement management plans that conserve candidate species and their habitats and that ensure that actions authorized, funded, or carried out by the BLM do not contribute to the need for the species to become listed. The minimum level of protection required under BLM policy is to treat candidate and sensitive species as well as proposed species or proposed critical habitat as if it were listed as threatened or endangered or designated critical habitat.

Document Name	Requirements for RMP
BLM Manual 7000, Soil, Water, and Air Management	Provides policy guidance for the management of soil, water, and air resources and watershed values with BLM land administration.
BLM Manual 8110, Identifying Cultural Resources	Requires every new, revised, and amended RMP to incorporate sufficient information to identify the nature and importance of all cultural resources known or expected to be present in the RMP area, provide goals for their management,; provide land use allocation decision in support of the goals, and provide management actions and prescriptions that will contribute to achieving the decisions.
BLM Manual 8120 and Handbook H-8210-1, Tribal Consultation under Cultural Resources	Provides policy and guidance on conducting government-to-government consultation with the Native American Tribes.
BLM Manual 8160, Native American Coordination and Consultation	Provides guidance for conducting Native American consultation.
BLM Manual 8300, Recreation Management	Provides policy guidance for recreation management, defines program goals and objectives, and provides a framework for recreation program development.
BLM Manual 8170, Interpreting Cultural Resources for the Public	Provides direction for public outreach and interpretation related to cultural resources including use of volunteers, museum collections, heritage tourism, and heritage education.
BLM Manual 8270 and Handbook H-8270-1, Paleontological Resource Management	Direct the BLM to manage paleontological resources for their scientific, educational, and recreational values.
BLM Manual 8351, Wild and Scenic River Policy	Directs the BLM to evaluate remaining river segments in the planning area for eligibility under the Wild and Scenic Rivers System.
BLM Manual 8400-1, Visual Resource Management	Establishes visual resource management classes through the RMP process for all BLM-administered lands. Class boundaries are adjusted as necessary to reflect the resource allocation decisions made in RMPs. Visual management objectives are established for each class.
BLM Manual 9211, Fire Planning	Provides guidance for preparing various types of fire plans.
BLM Handbooks	
BLM Handbook H-1601-1, Land Use Planning Handbook	Provides guidance for preparing, revising, amending, and maintaining land use plans.
BLM Handbook H-1624-1, Planning for Fluid Mineral Resources	Provides guidance for fluid mineral resource planning.
BLM Handbook H-1790-1, National Environmental Policy Act Handbook	Provides guidance for preparing NEPA documents (EISs, EAs).

Document Name	Requirements for RMP
BLM Handbook H-3070-1, Economic Evaluation of Coal Properties	Provides specific requirements for economic evaluation (appraisal) of coal properties for use of such appraisal in the lease, sale, or exchange process.
BLM Handbook H-3070-2, Economic Evaluation of Oil and Gas Properties	Provides guidance to economic evaluation personnel and managers in the evaluation of oil and gas properties and the use of those evaluation in Indian oil and gas lease sales, and Indian and Federal disposal, acquisitions, and exchanges.
BLM Handbook H-3600-1, Mineral Materials Disposal	Provides the procedures and processes to follow in implementing the regulations as 43 CFR 3600.
BLM Handbook H-4120-1, Grazing Management	Provides specific guidance for managing grazing on public lands.
BLM Handbook H-4180-1, Rangeland Health Standards	Describes the authorities, objectives, and policies that guide the implementation of the Healthy Rangeland Initiatives. Implementation will provide for the assessment of public land health, and for taking appropriate action to achieve, or make progress toward achieving, specified rangeland health standards.
BLM Handbook H-8120-1, General Procedural Guidance for Native American Consultation	Assists BLM managers and staff members in carrying out their assigned tribal consultation responsibilities and roles. Helps assure that (1) federally recognized tribal governments and Native American individuals, whose traditional uses of public land might be affected by a proposed BLM action, will have sufficient opportunity to contribute to the decision, and (2) the decision maker will give tribal concerns proper consideration.
BLM Handbook H-8410-1, Visual Resource Inventory Handbook	Establishes visual resource management classes through the RMP process for all BLM-administered lands. Class boundaries are adjusted as necessary to reflect the resource allocation decisions made in RMPs. Establishes visual resource objectives for each class.
BLM Handbook H-8550-1, Interim Management Policy for Lands under Wilderness Review	Directs the BLM to continue to manage all previously established WSAs for wilderness values and character until Congress either designates them as wilderness areas or releases them for other types of multiple use management.
BLM Handbook H-9211-1, Fire Management Activity Planning	Contains specific instructions on how to develop Fire Management Activity Plans.
BLM Handbook H-9214-1, Prescribed Fire Handbook	Designates all use of prescribed fire to support land and resource management plans. Directs RMPs or other land use plans to initiate, analyze, and justify prescribed fire activities. Encourages resource managers and fire managers to consider large scale or even landscape scale projects and multi-unit and multi-year projects should be considered.
BLM Instruction Memoranda	
IM 1998-164, Summary of Visual Resource Management (VRM) Issues Discussed In Southern Utah Wilderness Alliance et. al., 144 IBLA 70 (1998)	Clarifies that VRM must be addressed as directed in the current VRM Manuals and Handbooks and that the implementation of VRM-related management decisions is mandated just as it is for any other resource allocation decision.

Document Name	Requirements for RMP
IM 2000-022, including Change 1 Compliance with NEPA – Addressing Alternatives for Livestock Grazing Permit Renewals	Directs the BLM to consider alternatives to the proposed action when there are unresolved conflicts concerning alternative uses of available resources. A reasonable range of alternatives must be considered that, at minimum, address (1) issuing a new permit based on the application; (2) issuing a permit with the same terms and conditions as the expiring permit; and (3) a “no grazing” alternative.
IM 2000-096, Use of Visual Resource Management Class I Designation in Wilderness Study Areas	Provides the BLM’s position recognizing case-by-case exceptions for valid existing rights and grandfathered uses, classifying WSAs as VRM Class I, and managing WSAs according to VRM Class I management objectives until such time as the Congress decides to designate the area as wilderness or releases it for other uses.
IM 2000-153, Standards Assessment Procedures and Guidance	Provides guidance on effectively assessing rangeland health standards and implementing guidelines for livestock grazing. Outlines a recommended process to follow when completing rangeland health standards assessments.
IM 2000-162, Land Use Plan Evaluations – Interim Guidance	Provides interim guidance to the State and Field Offices for evaluating land use plans. Land use plans are evaluated to determine (1) if decisions are current, (2) if decisions need to be revised, (3) if decisions need to be dropped, and (4) areas where new decisions are needed.
IM 2001-030 including Change 1, Military Activities On and Over Public Lands	States the statutory, regulatory, and policy guidance that affects the authorization of military activities which may impact public lands managed by the BLM. Provides supplemental guidance in the context of the “War on Terrorism” and “Homeland Defense” initiatives.
IM 2001-038 including Change 1, Development/Approval of Preparation Plans for New Planning Starts	Provides guidance and outlines the specific elements to be used in developing and submitting a preparation plan. Requires the collection and display of geospatial metadata and establishes an interim requirement to collect and display metadata about land use planning non-spatial data.
IM 2001-078, Federal Register Documents	Explains how BLM will implement the Department’s policy of reviewing all Federal Register documents prior to publication.
IM 2001-158, Consultation with the National Marine Fisheries Service on Federal Actions Adversely Affecting Designated Essential Fish Habitat	Provides information on how to conduct an Essential Fish Habitat assessment and complete Essential Fish Habitat consultation to ensure BLM actions are compliant with the Magnuson-Stevens Fishery Conservation and Management Act.
IM 2001-179, Guidance on Preparing Federal Register Notices	Provides information to facilitate the review process for Federal Register notices prior to authorization of publication.
IM 2002-034, Fire Management Planning	Outlines the decisions that should be made in RMPs regarding fire management.
IM 2002-100, Review Requirements for Land Use Planning Efforts	Provides guidance for the roles and responsibilities of the Washington Office and State Offices for review of planning documents.

Document Name	Requirements for RMP
IM 2002-041, Expediting Appeals Resolution in OHA when NEPA Challenges are the Cause of Appeal	Establishes BLM policy for creating and transmitting electronic copies of NEPA documents to the Interior Board of Land Appeals.
IM 2002-053, Preparation of a Statement of Adverse Energy Impact	Provides that all decisions made by the BLM will take into consideration adverse impacts on the President's National Energy Policy.
IM 2002-108 Change 2, Process for Tracking Litigation Costs in BLM	Provides direction on the method that will be used to track appeal/litigation costs incurred by the BLM.
IM 2002-124, Timing of Decision following Standards Achievement and Guideline Conformance Determinations	Provides direction as to the "start of the next grazing year" and making changes to grazing management in order to meet Standards for Rangeland and Guidelines for Grazing Management.
IM 2002-143, Competitive Sale of Public Lands	Reinforces and clarifies the BLM regulations and policy for sale of public lands.
IM 2002-161, Federal Register Notice Publication Policy	Lists the instances in which statute or regulations require BLM to publish a Federal Register notices and provides an opportunity for staff to review the list for completeness. Provides an opportunity for staff and management to comment on whether BLM to continue to publish specific notices which are not required by statute or regulation.
IM 2002-164, Guidance to Address Environmental Justice (EJ) in Land Use Plans and Related National Environmental Policy Act Documents	Provides guidance on how to incorporate Environmental Justice into planning documents.
IM 2002-167, Social and Economic Analysis for Land Use Planning	Provides additional guidance for conducting social and economic analyses in land use plans.
IM 2002-196, Right-of-Way (ROW) Management-Land Use Planning	It is essential that BLM appropriately consider the Nation's needs for ROW corridors and ROW Use Areas related to the production and distribution of energy in the land use planning process. In addition, all land use plans must assess the impacts of land use decisions on current and potential ROW corridors and ROW Use Areas and the authorization of energy related and other ROWs within the lands affected by the plan.
IM-2002-209, Federal Register Notice Review Policy	Lists the types of Federal Register notices that may be sent direction to the Office of the Federal Register and provides guidance on the quality standards expected when preparing Federal Register notices.
IM-2002-216, Federal Register Notice Instructions	Provides guidelines on Office of the Federal Register policies and procedures.

Document Name	Requirements for RMP
IM 2003-054, Identification of State Data Steward for Land Use Planning Boundaries	Identifies the State Data Steward for Land Use Planning Boundaries and provides guidance for the selection of the steward.
IM 2003-070 including Change 1, Clarify policy and procedures for the resolution of protests to land use plans	Provides guidance on the roles and responsibilities of the Washington Office, State Offices, and Field Offices in the resolution of protests. Provides new guidance on receiving, managing, and responding to electronic mail and fax protests; and the confidentiality of personal privacy information in protests and on sign-in sheets from public meetings.
IM 2003-169, Use of the Economic Profile System in Planning and Collaboration	Requires the BLM to include an EPS-based workshop (or its equivalent) on regional economic conditions and strategies as part of the RMP public involvement process. Field offices are also encouraged to use EPS as a tool for characterizing socio-economic baseline conditions in the planning process
IM 2003-195, Rescission of the National Level Policy Guidance on Wilderness Review and Land Use Planning	Rescinds IM 2001-075, IM 2001-042, IM 2001-043, and Handbook 6310-1.
IM 2003-232, Full Force and Effect Decision Authority for Wildland Fire Management Decisions	Provides information and implementation guidance on recent changes to regulations governing Full Force and Effect authority for wildland fire management decisions.
IM 2003-238, Guidance for Data Management in Land Use Planning	Provides guidance for management of data used in the development of land use plans. This guidance supplements guidance found in the Data Administration Handbook.
IM 2003-274, BLM Implementation of the Settlement of Utah v Norton Regarding Wilderness Study	Directs the BLM to no longer designate lands as WSAs for management pursuant to the non-impairment standard.
IM 2003-275, Consideration of Wilderness Characteristics in Land Use Plans (Excluding Alaska)	Directs BLM to continue to protect and manage congressionally designated wilderness and existing WSAs according to the provisions of applicable laws and the BLM's wilderness program policies. States that the BLM will not designate new WSAs through the land use planning process. In addition, the BLM will not allocate any additional lands to be managed under the non-impairment standard prescribed in the IMP. Instead, the BLM may consider information on wilderness characteristics, along with information on other uses and values, when preparing land use plans.

Document Name	Requirements for RMP
IM 2004-005, Clarification of OHV Designations and Travel Management in the BLM Land Use Planning Process	Directs the BLM to manage motorized and other access on the public lands in accordance with existing law, executive orders, proclamation, regulation, and policy. Road and trail access (and OHV management) guidance will be incorporated into every RMP to ensure public and resource needs are met. At a minimum, each RMP will divide planning areas into OHV area designations that are open, limited, or closed. The RMP will include a map of area designations. If complexity, controversy, or incomplete data make it impossible to complete the selection of a road and trail network for any area designated as limited within reasonable timeframes or budget availability, the BLM will perform the selection process for all limited areas that can be completed.
IM 2004-007, Land Use Plan and Implementation Plan Guidance for Wildland Fire Management	Updates guidance regarding the treatment of wildland fire management in land use plans and implementation level plans.
IM 2004-049, Clarification of the Range Improvement Program	Provides guidance on the construction, maintenance, and reconstruction of range improvement on public land, including WSAs.
IM 2004-052, Assessing Tribal and Cultural Considerations as Required in IM-2003-233, Integration of the Energy Policy and Conservation Act (EPCA) Inventory Results into the Land Use Planning Process	Provides supplemental guidance on consultation requirements and strategies for consideration of cultural resources, in particular, properties of traditional religious and cultural importance to Indian tribes.
IM 2004-079, Land Use Plan Decisions, Implementation Decisions, and Administrative Remedies	Requires the BLM to distinguish between land use plan and implementation decisions in all proposed Resource Management Plan (RMP) documents (new RMPs, revisions, or amendments) and related decisions (Records of Decision (ROD) and Decision Records (DR)), and clearly describe for the public the administrative remedies for each type of decision. The "Dear Reader" letter or the Executive Summary could be used to communicate this information to the public.
IM 2004-089, Policy for Reasonably Foreseeable Development Scenario for Oil and Gas	Clarifies and updates policy for the preparation and use of the Reasonably Foreseeable Development scenario for oil and gas in support of land use planning and other purposes. Provides for a basic level of consistency in the preparation and reports of the Reasonably Foreseeable Development scenario.
IM 2004-096 including Change 1, Federal Register Notices of Availability for Records of Decision	Provides guidance and improves the process for publishing the Federal Register Notice of Availability for Records of Decision, land use plans.

Document Name	Requirements for RMP
IM 2004-105, Cooperating Agency: Proposed Planning Rules Change	Proposes a rule to define cooperating agency and cooperating agency statuses, clarify the responsibility of managers to offer this status to qualified agencies and government and to respond to requests for this status, and make clear the role of cooperating agencies in the various steps of BLM's planning process.
IM 2004-148, Federal Register Notice; Solicitor's Edits	Notifies the BLM that the DOI Office of the Solicitor modified requirements for BLM Federal Register notices. The Regulatory Affairs Group staff will now begin to edit notices so that the Office of the Solicitor's review can process swiftly.
IM 2004-196, Clarification of Policy in the BLM Manual Section 8351, Wild and Scenic Rivers, with Respect to Eligibility Criteria and Protective Management	Clarifies policy contained in the BLM Manual 8351 and until incorporated into the Manual is applicable to all river segments determined eligible and/or suitable.
IM 2004-220 including Change 1, Guidance on Preparing Federal Register Notices	Reiterates the process for preparing Federal Register notices and reflects changes in that process.
IM 2005-037, New Department of the Interior Requirements; Use and Further Distribution of A Desk Guide to Cooperating Agency Relationships	Transmits the new Desk Guide to Cooperating Agency Relationships, which identifies policy by summarizing and explaining elements of both CEQ's NEPA regulations and BLM's planning regulations concerning the CA relationship.
IM 2005-249, <i>Federal Register</i> Notice Templates for Land Use Plans	Provides templates that will be used in preparing the Notice of Intent and Notices of Availability for draft and proposed plans and plan amendments
IM 2005-056, Plan Schedule Changes	Requires SOs to submit schedule change requests to the Assistant Director, Planning and Renewable Resources (AD-200) when the RMP will not be completed (e.g., Record of Decision) by the date approved in the RMP preparation plan or by a previously approved schedule change completion date.
IM 2005-058, New Cooperating Agency Reporting Procedures/Requirements for EISs and EAs	Requires BLM to report to CEQ the status of cooperating agency relationships on an annual basis. For EISs, the lead agency will report: (1) the title of the EIS; (2) the names of the CAs for the EIS; (3) the names of agencies who declined an invitation to participate as a CA or who requested but failed to reach agreement on establishing CA status and agencies whose CA status was ended, and the reason(s) CA status was not established or was ended; and (4) the current status of the EIS. The reporting agency will provide updated information in subsequent FYs by submitting the previous EIS report with new information inserted and highlighted.

Document Name	Requirements for RMP
IM 2006-047, Transmittal of Technical Reference 1734-6, Interpreting Indicators of Rangeland Health, Version 4	Provides guidance in conducting Standards for Rangeland Health assessments.
IM 2006-073, Weed-Free Seed use on Lands Administered by the Bureau of Land Management	Addresses the quality of seed purchased by the BLM for use on public lands. Requires BLM offices to use seed on public lands that contain no noxious weed seed and meets certified seed quality.
IM 2006-100, Cooperative Monitoring Implementation Guidance	Provides an updated set of questions and answers to assist with the Implementation of the Memorandum of Understanding for Cooperative Rangeland Monitoring.
IM 2006-112, Minimum Qualifications for Socio-economic Contractors	Requires contractors to utilize staff with a minimum of a masters degree in economics when preparing economic assessments and a masters degree in a non-economic social science (sociology, anthropology, or geography) when preparing social assessments. Staff must also have two years relevant experience and familiarity with the geographic region relevant to the proposed contract.
IM 2006-114, State Wildlife Action Plans	Directs BLM to consider State Wildlife Action Plans (or Comprehensive Wildlife Conservation Strategies) in land use planning.
IM 2006-149, Livestock Grazing Allotment and Pasture Spatial Database Standards	Provides the data standards for developing and maintaining livestock grazing allotment and pasture boundaries in electronic format.
IM 2006-159, Non-Binding Determinations of RS 2477 Right-of-Way Claims	Allows BLM to make informal, non-binding determinations of RS 2477 claims for its own land use planning and management purposes, and reiterates that BLM does not have the authority to make binding determinations on the validity of RS 2477 right-of-way claims.
IM 2006-173, Implementation of Roads and Trails Terminology Report	Establishes consistent terminology and definitions within BLM to be used when describing linear assets.
IM 2006-204, Consideration of Large Fire Suppression Costs at all Planning Levels	Requires BLM to evaluate the anticipated, relative wildland fire suppression costs for all alternatives proposed in planning efforts.
IM 2006-214, Establishment of Geospatial Standards for Land Use Planning Boundaries	Sets standards for the geospatial Land Use Planning Boundary features within the BLM and requires data stewards to adopt these standards and convert their data to meet these standards.
IM 2006-216, Wind Energy Development Policy	Provides guidance for implementing the Record of Decision for the Programmatic Environmental Impact Statement on Wind Energy Development and guidance on processing right-of-way applications for wind energy projects on public lands.

Document Name	Requirements for RMP
IM 2006-225, Standardized Guidance on Compiling a Decision File and an Administrative Record	Transmits guidance from the Office of the Solicitor to use when compiling Decision Files and administrative records
BLM Information Bulletins	
IB 1998-135, VRM Policy Restatement	Reiterates BLM's policy that visual resource values must be considered in all land use planning efforts.
IB 2002-054, IT in Support of Land Use Planning Project	Clarifies how the Information Technology in Support of Land Use Planning project and the BLM Data Management 2001 project relate to Land Use Planning in the BLM.
IB 2002-056, Recommended Formats for Land Use Plans, Records of Decision, and Their Supporting Environmental Impact Statements	Presents a recommended format for certain planning documents as a tool for planners to use in developing planning documents and as a way to gain greater consistency across the BLM.
IB 2002-101, Cultural Resource Considerations in Resource Management Plans	Clarifies the level of cultural resource information and the kinds of long-term management decisions needed in land use plans.
IB 2003-020, Minimum Content for RMP Scoping Reports	Provides a recommended format field offices may use in preparing RMP scoping reports.
IB 2003-058, Preparing to Prepare a Land Use Plan	Advises offices planning to prepare a land use plan or land use plan amendment of necessary steps prior to actually beginning the planning process and receiving planning funding.
IB 2003-074, Sampling Filing Plan for Land Use Planning Records	Provides a sample filing plan for land use planning administrative records.
IB 2003-078, DOI Memoranda in Effect	Identifies which Office of Environmental Policy and Compliance environmental memoranda are currently in effects, including Environmental Statement Memoranda, Environmental Compliance Memoranda, and Environmental Review Memoranda.
IB 2003-113, The Manager's Role in the Land Use Planning Process	Outlines the role of managers in successful completion of land use plans in a timely manner.
IB 2004-046, Memorandum of Understanding, Science in Support of Land Use Planning	Outlines the Memorandum of Understanding entitled "Science in Support of Land Use Planning" signed by the Directors of the US Geological Survey and the BLM.

Document Name	Requirements for RMP
IB 2004-087, New Department of the Interior Environmental Statement Memoranda	Directs BLM to incorporate the guidance contained in five Departmental ESMs that provide NEPA guidance supplemental to the Departmental Manual 516, as well as agency manuals and handbooks
IB 2005-140, Council on Environmental Quality (CEQ) Guidance on Cumulative Effects Analysis	Directs BLM to use the CEQ memorandum titled "Guidance on the Consideration of Past Actions in Cumulative Effects Analysis," which provides guidance on the extent to which agencies of the Federal government are required to analyze the environmental effects of past actions when they describe the cumulative environmental effect of a proposed action.
IB 2005-159, Public Comment Periods for Planning and Environmental Documents	Clarifies the minimum public comment periods required for planning documents. The comment period for Draft RMPs is 90 days; this comment period may be extended if there are unusual or compelling reasons to do so. The protest period for Proposed RMPs is 30 days, which cannot be extended.
Other BLM Plans, Policies, and Strategies	
Northwest Area Noxious Weed Control Program EIS (1987)	Requires integration of weed management guidelines and design features.
Vegetation Treatment on BLM Land in the 13 Western States EIS (1991)	Requires integration of weed management guidelines and design features.
Wind Energy Programmatic EIS (2005)	Directs plans to tier to the programmatic EIS for specific wind energy projects.
Westwide Energy Corridor EIS (in progress)	Requires each agency to amend its respective land use plans by designating appropriate energy corridors based upon information and analyses developed in the PEIS.
Federal Wildland Fire Management Policy (1995)	Requires BLM to provide overall direction to the wildland fire management program in RMPs.
BLM National Off-Highway Vehicle Management Strategy (2001)	Helps design on-the-ground implementation solutions to motorized OHV issues, protect public land resources, and make more effective use of existing staff and funding.
BLM National Mountain Bicycling Strategic Action Plan (2002)	Provides guidance in implementing on-the-ground actions and resource protection measures relative to mountain bike use and other non-motorized/mechanical transport uses.
BLM's Priorities for Recreation and Visitor Services, BLM Workplan, Fiscal Years 2003-2007	Requires plans to conform to goals, objectives, milestones, and actions as stated in the workplan.

Document Name	Requirements for RMP
National Sage-Grouse Habitat Conservation Strategy: 1.3.1 Guidance for Addressing Sagebrush Habitat Conservation in BLM Land Use Plans (2004)	Directs BLM to identify and provide for desired outcomes, strategies, restoration opportunities, use restrictions, and management actions to conserve and restore sage grouse habitat.
BLM National Scenic and Historic Trails Strategy and Workplan (2006)	Establishes goals and objectives for enhanced management of the Oregon National Historic Trail.
Interagency Standards for Fire and Fire Aviation Operations (Red Book; 2006)	Specifies an objective of the wildland fire management program is to minimizing damages and maximizing overall benefits of wildland fire within the framework of land use objectives and RMPs. Requires every area with burnable vegetation to have an approved Fire Management Plan (FMP).
Idaho BLM Instruction Memoranda	
IM ID-2000-059, Guidance Implementing the Draft Sage Grouse Habitat Assessment Framework for Lands Administered by the Bureau of Land Management (BLM) in Idaho	Facilitates and standardizes sage grouse habitat assessment for public lands administered by Idaho BLM. Includes instructions for performing vegetation cover and structure transects.
IM ID-2003-042, Policy for Managing Livestock during Drought	Establishes policy for managing public land resources during severe and extended drought.
IM ID-2003-057, Special Status Species	Provides for the BLM to assist in addressing conservation management needs to ensure critical habitats and populations of sensitive species on public lands will be managed and/or conserved to minimize the needs for Federal protection.
IM ID-2004-083, Change 1 Endangered Species Act (ESA), Section 7 Consultation for Reissuing and Issuing Livestock Grazing Permits and Leases	Clarifies procedures for notifying grazing permittees of applicant status in Idaho BLM Manual Supplement 6840. Provides consistent procedures for reissuing and issuing livestock grazing permits and leases in compliance with the ESA.
IM ID-2004-086, Reissuing and Issuing Livestock Grazing Permits and Leases	Provides consistent procedures for reissuing and issuing grazing permits.

Document Name	Requirements for RMP
IM ID-2006-049, Interagency Implementation Team (IIT)(PACFISH/INFISH) Implementation Monitoring for FY 2006	Provides management and monitoring guidance for implementing INFISH for bull trout recovery.
Idaho BLM Information Bulletins	
IB ID-2003-062, Interagency Memorandum of Understanding (MOU) to Implement the Interior Columbia Basin Strategy	Cooperatively implements the Interior Columbia Basin Strategy. Provides guidance including the findings of the Interior Columbia Basin Ecosystem Management Project (ICBEMP) science and use of the best available science in the development of resource management plans and projects including consultation under the Endangered Species Act. Interim INFISH direction will continue until resource management plans are amended to include ICBEMP.
IB ID-2004-148, ESA Consultation, Applicant Status	Provides guidance for involving an Applicant in the Consultation Process as Established by Section 7 of the Endangered Species Act.
Other Idaho BLM Policies, Plans, and Guidance	
Idaho Standards for Rangeland Health and Guidance for Livestock Grazing Management (1997)	Provides resource measures and guidance needed to ensure healthy, functional rangelands, focusing on proper nutrient cycling, hydrologic cycling, and energy flow. Standards are established relative to watersheds, riparian areas and wetlands, stream channels and floodplains, native plant communities, seedings, exotic plant communities, water quality, and threatened and endangered plants and animals.
South Central Idaho Fire Planning Unit Fire Management Plan (2005)	Directs that management actions should reduce wildland fire severity and frequency, as well as restore resiliency by improving range condition. Actions are congruent with maintaining and improving wildlife habitat and rangeland health, as well as providing for firefighter and public safety.
The current Normal Fire Rehabilitation Plan	Streamlines the Emergency Stabilization and/or rehabilitation plans, action, and procedures to facilitate orderly and timely on the ground treatments. Directs the outcome of treatments to emulate pre-fire ecosystem structure, function, diversity, resiliency, and dynamics consistent with approved land management plans, or if that is infeasible, to restore or establish a healthy, stable ecosystem in which native species are well represented.
Oregon Trail Management Plan, Boise District (1984)	Provides specific management direction for the Oregon Trail National Historic Trail route within the planning area.
Boise District-wide EA for Weed Management	Requires consistency with weed control measures.
Other Federal Policies, Plans, and Guidance	

Document Name	Requirements for RMP
Comprehensive Management and Use Plan for the Oregon and California National Historic Trails (1999)	Requires conformity to management prescriptions identified for the Oregon National Historic Trail in the planning area.
Interim Guidelines to Avoid and Minimize Wildlife Impacts from Wind Turbines, US Fish and Wildlife Service (2003)	Assists the wind energy industry in avoiding or minimizing impacts to wildlife and their habitats.
Framework for Incorporating the Aquatic and Riparian Component of the Interior Columbia Basin Strategy (BLM/FWS/EPA/NOAA Fisheries Memorandum, July 9, 2004)	Provides a long-term aquatic conservation strategy for listed and sensitive fishes.
Coordinated Implementation Plan for Bird Conservation in Idaho (2005)	Creates a planning forum through which representatives of Federal and State conservation agencies and wildlife conservation groups work collaboratively to develop coordinated habitat goals, objectives, and projects that address the conservation needs of all bird species in Idaho.
Fish & Wildlife Public Land Order 4153	Requires the BLM to manage the designated parcels for the primary benefit of wildlife. Other uses including grazing are allowed only to the extent that they do not impact wildlife habitat or public access.
Jarbidge Bull Trout Recovery Plan (Draft)	Provides an interagency plan for the recovery of federally listed bull trout and their habitats in the Jarbidge Watershed.
State Laws	
Idaho Cave Protection (Title 18, Chapter 70, Idaho Code, Section 18-7035 - Damaging Caves or Caverns Unlawful)	Defines the criminal acts and penalties for such pertaining to caves or caverns within Idaho.
Idaho Stream Channel Protection Act (Title 42, Chapter 38, Idaho Code)	Requires Idaho stream channels and their environments be protected against alteration for the protection of fish and wildlife habitat, aquatic life, recreation, aesthetic beauty, and water quality. Channel alterations cannot be made without State approval.
Other State Policies, Plans, and Guidance	
Bighorn Sheep Species Management Plan, IDFG (1991)	Describes the Idaho Department of Fish and Game's bighorn sheep population goals and objectives. Identifies species-specific biological, social, and economic issues throughout the state.
Pronghorn Antelope Species Management Plan, IDFG (1991)	Describes the Idaho Department of Fish and Game's pronghorn population goals and objectives. Identifies species-specific biological, social, and economic issues throughout the state.

Document Name	Requirements for RMP
White-tailed Deer, Mule Deer, and Elk Species Management Plans, IDFG (1999)	Describes the Idaho Department of Fish and Game's species-specific policies and establishes population goals and objectives. Identifies species-specific biological, social, and economic issues throughout the state.
Fisheries Management Plan, IDFG 2001-2006	Describes the Idaho Department of Fish and Game's specific fisheries policies and establishes fisheries goals and objectives. Identifies factors limiting fisheries and proposes corrective measures.
Conservation Plan for the Greater Sage-grouse in Idaho, IDFG (2006)	Provides guidance, information, conservation tools, and related resources necessary to achieve locally and regionally appropriate conservation objectives for sage-grouse population and habitat conservation.
Idaho Comprehensive Wildlife Conservation Strategy, IDFG (2006)	Provides information and general direction for developing conservation plans for at-risk species and habitats.
State Comprehensive Outdoor Recreation and Tourism Plan 2006-2010 (SCORTP)	Provides a reference in determining general outdoor recreation and tourism participation patterns and trends for Idaho. Compliments local and regional planning in identifying outdoor recreation needs.
Nevada Administrative Code, Surface Water Quality Standards (Chapter 445A.118-445A.225)	Sets water quality standards applicable to all surface waters of Nevada. Requires waters to be free from various pollutants. Sets criteria for various pollutants which are designed to protect the beneficial uses of classes of water from A to D.