

8500-Id

IDAHO

INTENSIVE WILDERNESS INVENTORY

FINAL DECISION



PROPERTY OF
IDAHO STATE OFFICE
BUREAU OF LAND MANAGEMENT

BUREAU OF LAND MANAGEMENT
IDAHO STATE OFFICE
NOVEMBER 1980

ISO LIBRARY



United States Department of the Interior

IN REPLY REFER TO

8500 (932)

BUREAU OF LAND MANAGEMENT

Idaho State Office
Federal Building
550 W. Fort Street
Box 042
Boise, Idaho 83724

November 13, 1980

I am pleased to announce that the Bureau of Land Management (BLM) has completed the inventory phase of the wilderness review of the public lands in Idaho. The release of this report marks the completion of the intensive inventory.

During the intensive wilderness inventory, inventory units containing over 1,938,000 acres of roadless public lands in Idaho were examined in detail to determine the presence or absence of wilderness characteristics. As a result of the intensive inventory field work and evaluation of public comments, I have determined that 36 inventory units totaling 818,206 acres do contain wilderness characteristics, and that 74 inventory units and 1,120,049 acres do not.

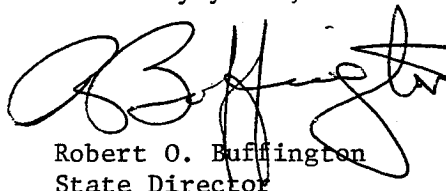
I have been pleased with the public interest in the wilderness inventory. We received over 3,200 responses from individuals and a wide variety of organizations. The information provided on wilderness characteristics of these areas, especially the presence or absence of naturalness and outstanding opportunities for solitude or primitive and unconfined recreation, was of great help in formulating my final decision.

After analyzing and evaluating the comments received, I have formulated this final decision on which areas do or do not contain wilderness characteristics. Those which do are identified as Wilderness Study Areas to be studied through the BLM planning system with a recommendation reported to Congress as to whether or not they are suitable for designation as Wilderness Areas.

Also included in this report is my final decision on the protests to the accelerated wilderness inventory decision in the Owyhee Planning Area.

I extend my sincere appreciation to those individuals and organizations who have participated in this endeavor and request your continued help.

Sincerely yours,



Robert O. Buffington
State Director

PROPERTY OF
IDAHO STATE OFFICE
BUREAU OF LAND MANAGEMENT

ISO LIBRARY

TABLE OF CONTENTS

	<u>Page</u>
Summary Idaho BLM Wilderness Inventory	1
Summary of Previously Announced WSAs	1
WSAs Identified Through Accelerated Inventories	2
Summary Idaho Intensive Wilderness Inventory Final Decision	19
Intensive Inventory Final Decisions by Unit	20
<u>Introduction</u>	23
I. Background	23
A. Overview of BLM's Wilderness Review Process	23
B. Instant Study Areas (ISAs)	24
C. Definitions	25
D. Interim Management Policy (IMP)	27
E. How Wilderness Characteristics Were Evaluated	27
1. Size	27
2. Naturalness	28
3. Solitude or Primitive and Unconfined Recreation	28
4. Supplemental Values	30
5. Possibility of Returning Area to a Natural Condition	30
II. Public Participation	30
A. Overview of Public Comments	30
B. How Comments Were Utilized	31
III. Format of This Report	32
IV. Special Inventories	33
A. Stateline	33
B. Sand Dunes	34
C. Challis	35
D. Owyhee	36
<u>Appendix A</u>	
Alphabetical Index - All Inventory Units	
<u>Appendix B</u>	
Narrative Summaries	
Boise District	
Burley District	
Idaho Falls District	
Salmon District	
Shoshone District	
Coeur d'Alene District	

SUMMARY
IDAHO BLM WILDERNESS INVENTORY
 THROUGH NOVEMBER 14, 1980

<u>Total Acres Inventories</u>	11,949,386
Acres Dropped During Initial Inventory Phase	8,289,215
Acres Considered Under Intensive Inventory Phase	3,660,171
 <u>Intensive Inventory Decision</u>	
<u>Previous Decisions</u>	
Acres Dropped	695,775
Acres Identified as Wilderness Study Areas	773,999
 <u>Current Decisions</u>	
Acres Dropped	1,120,049
Acres Identified as Wilderness Study Areas	818,206
Acres - Decision Deferred due to Appeals	252,414

SUMMARY OF PREVIOUSLY ANNOUNCED WILDERNESS STUDY AREAS

Inventory Name	Wilderness Study Areas		Units Under Appeal	
	Units	Acres	Units	Acres
Sun Valley	2	14,158		
Black Butte	1	4,002		
Donkey Hills	1	3,290		
Ag ES	1	23,815		
Challis	4	117,073	4	117,073
Owyhee	10	236,101		<u>1/</u>
Overthrust	5	1,160		
Great Rift	<u>1</u>	<u>374,400</u>		
TOTAL	25	773,999		

1/ The Owyhee protest decision is announced as part of this report and is now subject to appeal.

WILDERNESS STUDY AREAS
IDENTIFIED THROUGH ACCELERATED INVENTORIES

<u>INVENTORY NUMBER</u>	<u>UNIT NAME</u>	<u>ACREAGE</u>
<u>Boise District</u>		
16-40	North Fork Owyhee River	55,147
16-41	Horsehead Spring	6,211
16-42	Squaw Creek Canyon	11,379
16-44	Deep Creek - Nickel Creek	11,510
16-45	Middle Fork Owyhee River	13,336
16-47	West Fork Red Canyon	12,882
16-49a	Deep Creek - Owyhee River	72,083
16-49d	Yatahoney Creek	9,331
16-49e	Battle Creek	31,540
16-52	Upper Owyhee River	12,682
19-2	King Hill Creek <u>1/</u>	23,815
<u>Idaho Falls District</u>		
33-1	Great Rift <u>1/ 2/</u>	374,400
34-2	Table Rock Islands <u>3/</u>	380
34-3	Pine Creek Islands <u>3/</u>	155
34-4	Conant Valley Islands <u>3/</u>	235
35-77	Henry's Lake <u>4/</u>	350
37-77	Worm Creek <u>4/</u>	40
<u>Salmon District</u>		
45-1	Goldburg <u>4/</u>	3,290
46-11	Corral Horse Basin	51,500
46-13	Boulder Creek <u>4/</u>	2,573
46-14	Jerry Peak	48,000
46-14a	Jerry Peak West	15,000
<u>Shoshone District</u>		
53-4	Little Wood River <u>4/</u>	4,385
53-5	Friedman Creek	9,773
54-2	Black Butte	4,002

1/ A portion of this unit is in the Shoshone District.

2/ Instant Study Area.

3/ These units were previously combined as one unit.

4/ Unit dependent upon a contiguous Rare II area to meet the criteria.

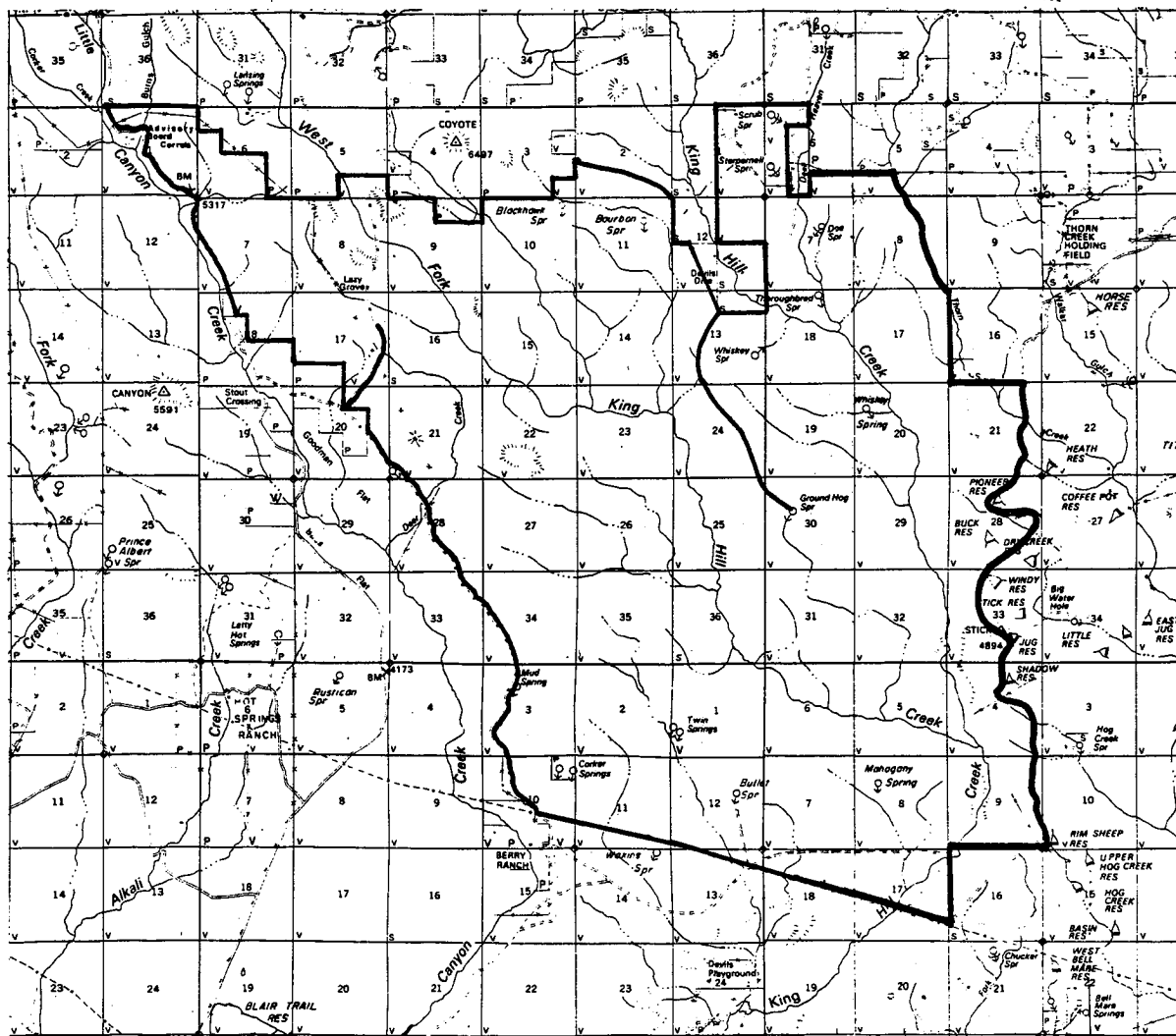
NOTE: WSA maps follow this page except for the Owyhee Area, where maps appear later in the report.

19-2

KING HILL CREEK

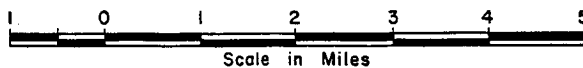
R. 10 E.

R. 11 E.





T 3 S.

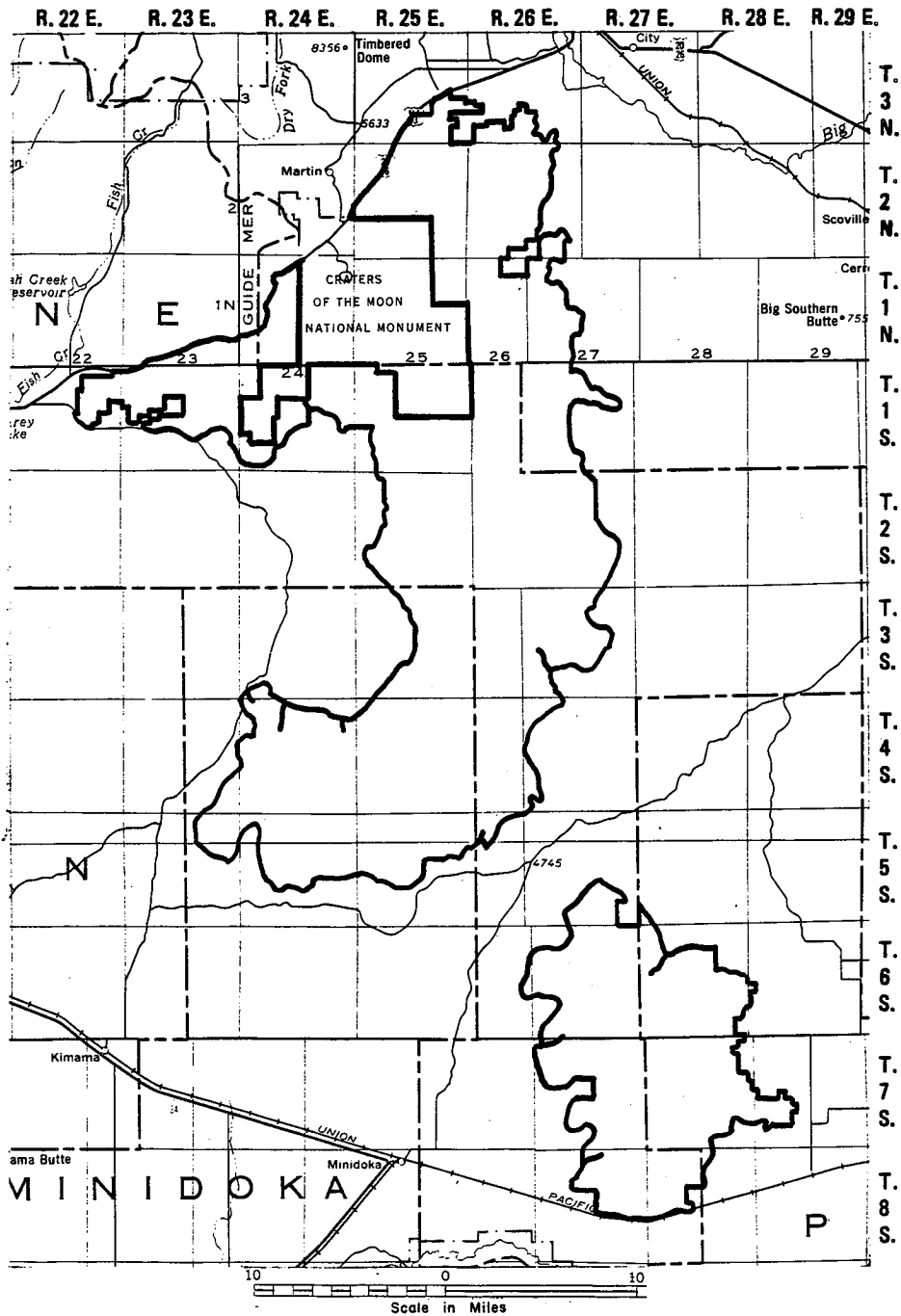
T. 4 S.





LEGEND

-  WILDERNESS STUDY AREA
-  AREA WITHOUT CHARACTERISTICS

33-1
GREAT RIFT

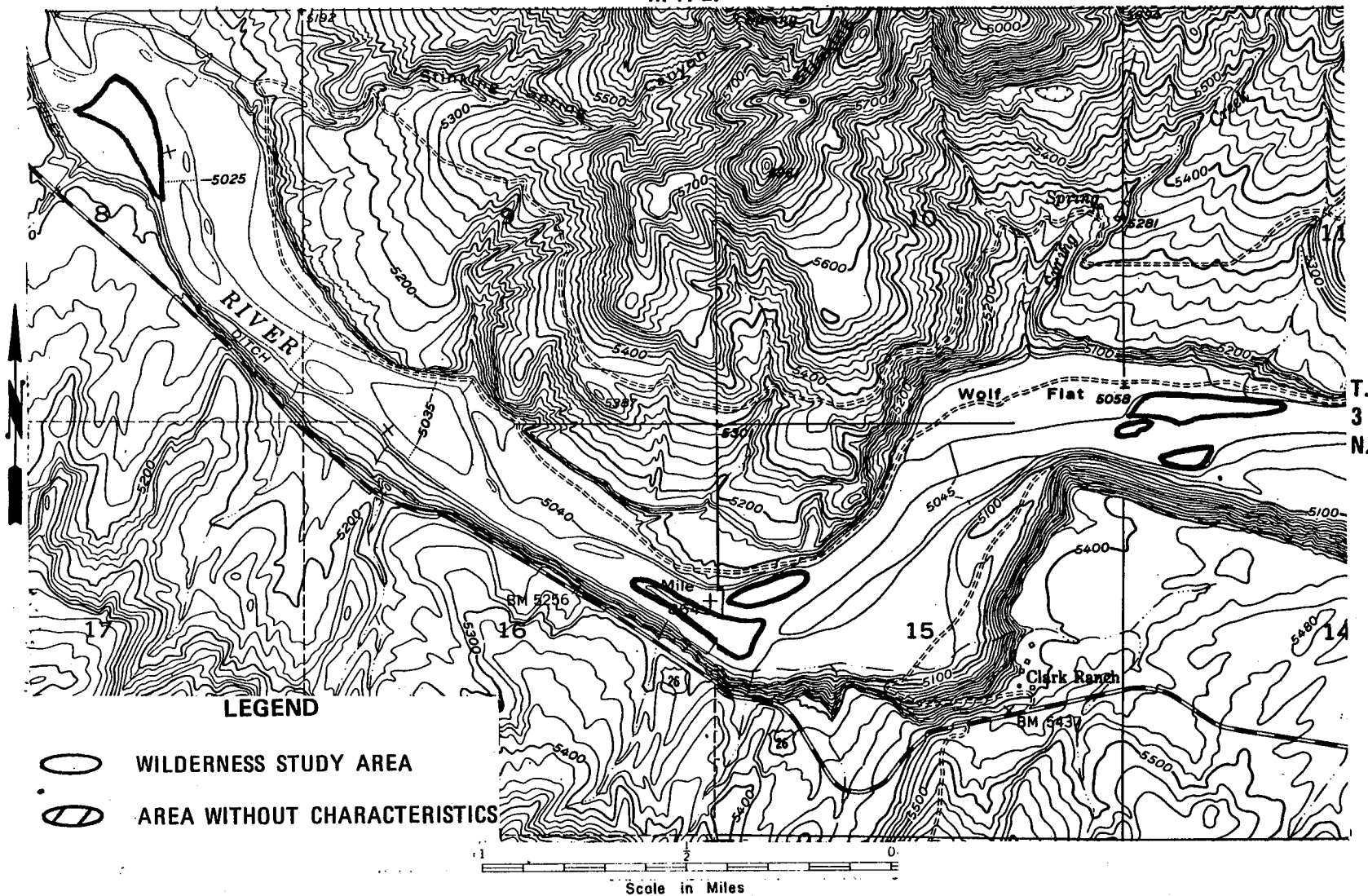


LEGEND

-  WILDERNESS STUDY AREA
-  AREA WITHOUT CHARACTERISTICS

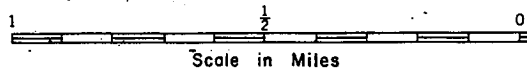
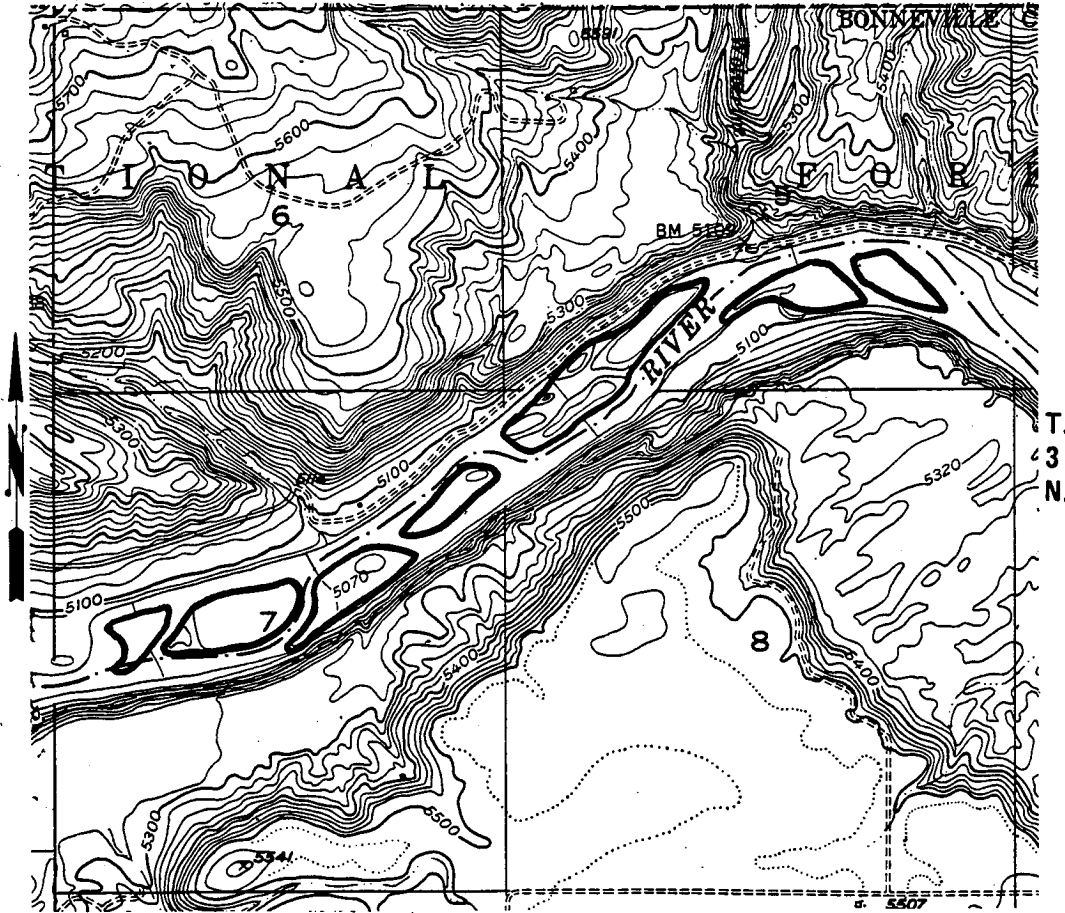
34-2
TABLE ROCK ISLANDS

R. 41 E.





34-2
TABLE ROCK ISLANDS

R. 42 E.



LEGEND

-  WILDERNESS STUDY AREA
-  AREA WITHOUT CHARACTERISTICS