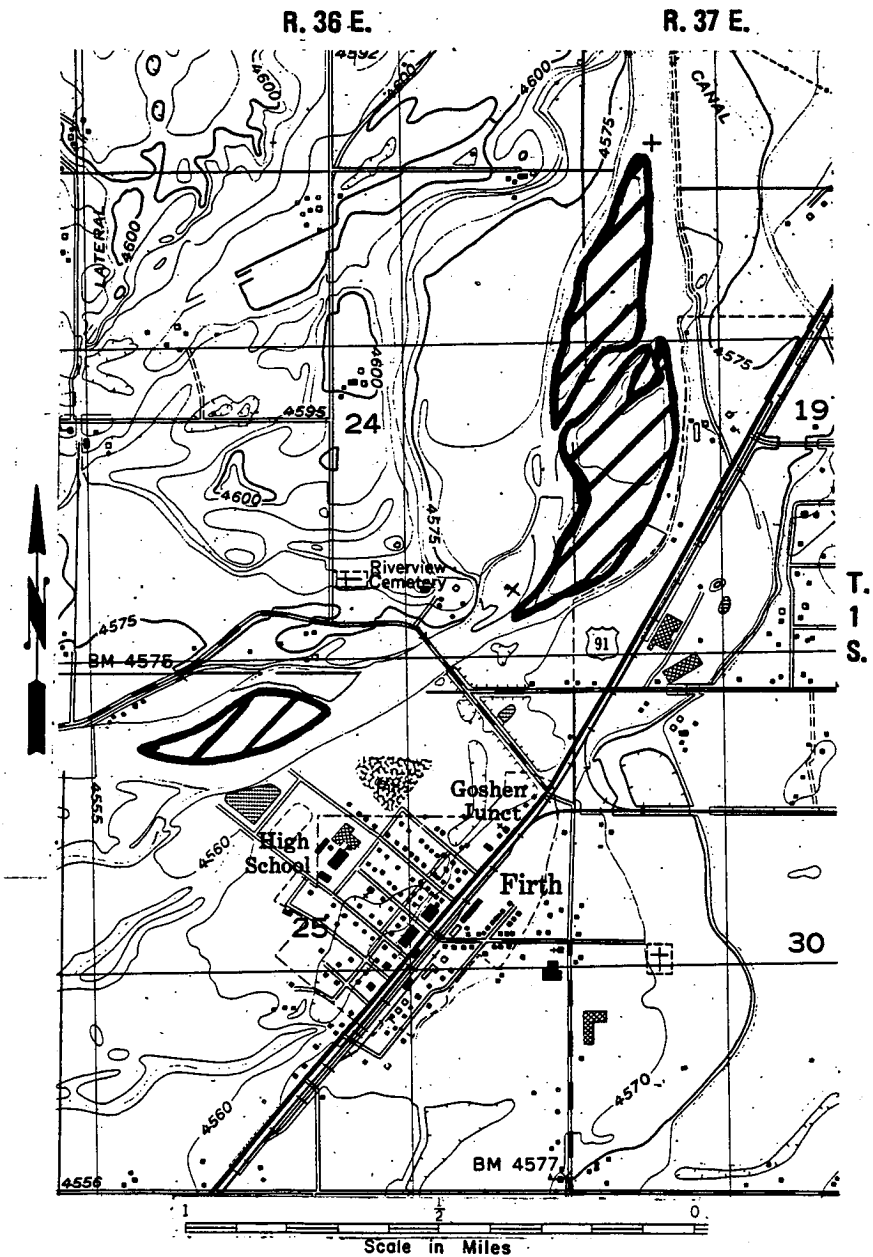




33-24
FIRTH QUAD ISLANDS



LEGEND

-  WILDERNESS STUDY AREA
-  AREA WITHOUT CHARACTERISTICS

33-24 FIRTH QUAD ISLANDS

The April 1980 proposed decision included the following evaluation of wilderness characteristics.

SIZE AND PHYSICAL CHARACTERISTICS:

The unit consists of three islands totalling 86 acres of BLM land. The islands are located in a 1.8 mile stretch of the main stem of the Snake River, within 1/4 mile of the communities of Firth and Basalt. The islands are generally flat. They are well vegetated with cottonwood, willow, sage, and grasses; vegetation is dense around the perimeters. The surrounding river is shallow and relatively slow moving.

NATURALNESS:

The natural character of these islands is impacted by the proximity of human activity. The channel to island 2 is so shallow that the neighboring landowner frequently drives across; vehicle ways are apparent on the island. Litter is scattered over all the islands, some of it carried there by the Teton Dam flood, the remainder by local recreationists. Vehicles are plainly visible from the islands, and traffic from U. S. 26/91 is easily heard and fairly constant. Houses are located directly across the narrow channels from the islands, as are agricultural areas and accompanying farm machinery.

Fluctuations of the water level are not usually caused by natural forces, with water diversion structures lining the river, substantially decreasing flow during the irrigation season.

MANAGEABILITY:

Due to the shallow narrow channels, prevention of vehicle crossings from the shore to the islands would be very difficult. They are small and are surrounded by agricultural and residential areas. Managing these islands in an unimpaired state would be virtually impossible due to their size, location, variability of river flow, and channel separation from the mainland.

SOLITUDE:

Vegetative screening is considered good on all three islands. Topographic screening is minimal. External influences are considered substantial and so imposing that they cannot be avoided. Due to the islands small size, general lack of screening and imposing outside influences, opportunities for solitude are not considered outstanding.

PRIMITIVE AND UNCONFINED RECREATION:

Primitive and unconfined recreational opportunities include fishing, hunting, and camping. Thick brush and a few openings inhibit camping opportunities. The unnatural water level fluctuations and low water quality reduce fishing opportunities and wildlife populations are not particularly abundant. Primitive recreation is considered less than outstanding.

SUPPLEMENTAL VALUES:

These islands provide habitat for beaver, rabbits, deer and some waterfowl.

* * *

PUBLIC COMMENT SUMMARY:

Comment received on this unit agreed with the proposed decision to drop it from further wilderness consideration.

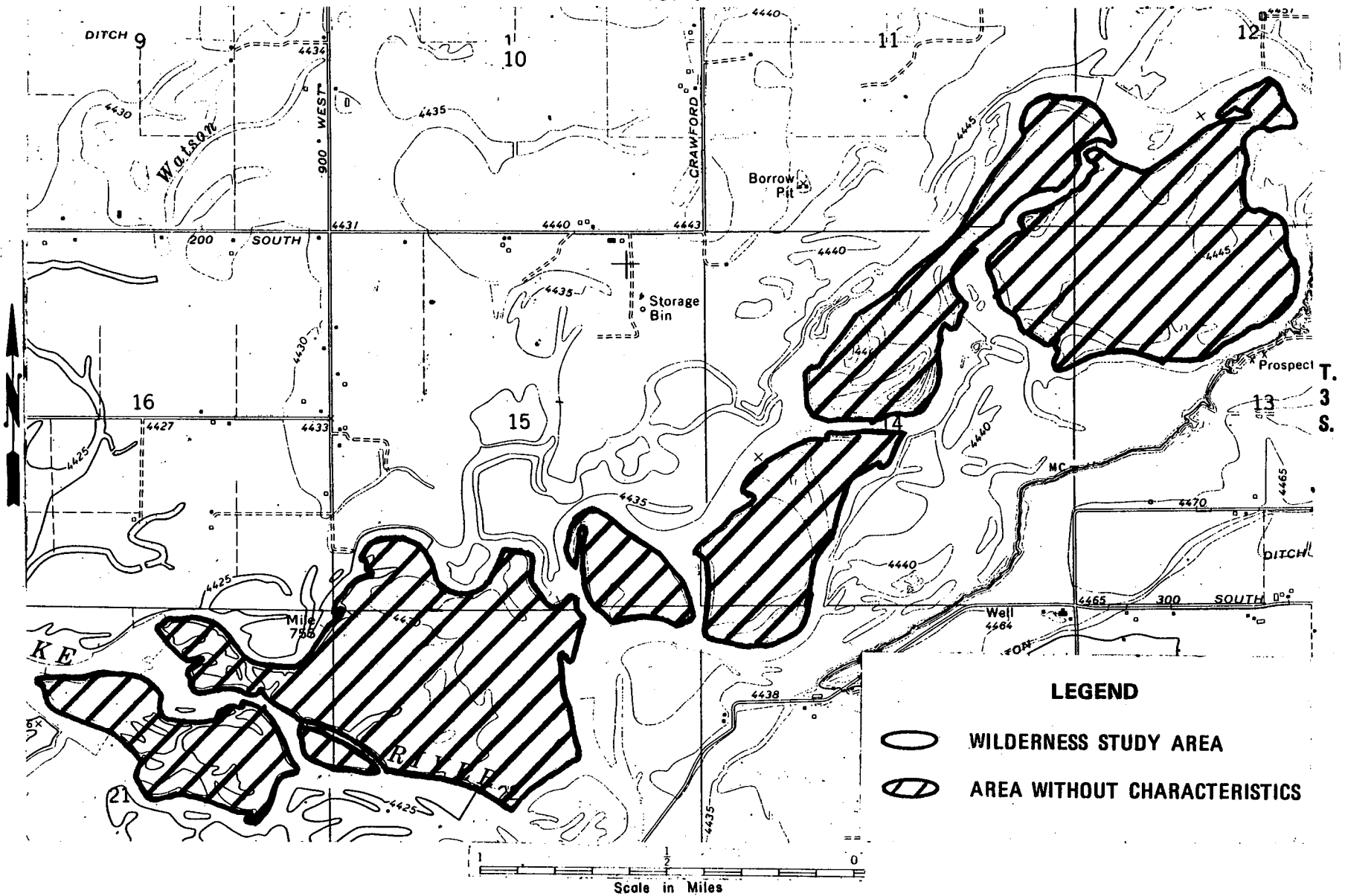
* * *

DECISION:



No new information was received through public comments that would warrant a change in the decision. The unit is not identified as a wilderness study area due to a lack of naturalness, a lack of manageability, and a lack of outstanding opportunities for solitude and for primitive recreation.

33-25
MORELAND QUAD ISLANDS

R. 34 E.



LEGEND

-  WILDERNESS STUDY AREA
-  AREA WITHOUT CHARACTERISTICS

33-25 MORELAND QUAD ISLANDS

The April 1980 proposed decision included the following evaluation of wilderness characteristics.

SIZE AND PHYSICAL CHARACTERISTICS:

The unit consists of seven islands totalling 807 acres of BLM land. They are located along a 4.7 mile stretch of the main stem of the Snake River downstream from Blackfoot, and four miles south of Moreland. The islands are generally flat. They are well vegetated with cottonwood, willow, sage, and grasses; vegetation is dense around the perimeters. The surrounding river is shallow, meandering and slow moving.

NATURALNESS:

Impacts on the islands include bulldozer tracks, motorcycle and other vehicle tracks, livestock fences, junk autos and litter. Bulldozer tracks and severe vegetation damage cut into the western end of island 8. Island 6 has been extensively used by motorcycles and has well worn trails on it. Fences were found on island 8 and several junk autos on islands 9 and 10. Trash and litter were found on all of the islands. External influences of a nearby highway and agricultural lands are considered substantial. None of the islands are large enough nor do they provide enough screening to hide these imprints from casual observation. The unit does not appear to have been affected primarily by natural processes.

MANAGEABILITY:

Islands 4, 6, 8, 9, and 10 are not actually islands during the irrigation season and drier months of the year, when the river channels dry up. Channels separating the other islands from the mainland are extremely shallow during low water seasons. Due to their small size, variability of river flow and channel separation from the mainland, it is not considered practicable to manage the islands in an unimpaired condition.

SOLITUDE:

Vegetative screening is considered good on all islands. Topographic screening is minimal. External influences are considered substantial and so imposing that they cannot be ignored or avoided. Due to the island's small size, general lack of screening and imposing outside influences, opportunities for solitude are not considered outstanding.

PRIMITIVE AND UNCONFINED RECREATION:

Primitive and unconfined recreational opportunities include fishing, hunting, and camping. Thick brush and few openings inhibit camping opportunities. The unnatural water level fluctuations and low water quality reduce fishing opportunities and wildlife populations are not particularly abundant. Primitive recreation opportunities are considered less than outstanding.

* * *

PUBLIC COMMENT SUMMARY:

Comment received on this unit agreed with the proposed decision to drop it from further wilderness consideration.

* * *

DECISION:

No new information was received through public comments that would warrant a change in the decision. The unit is not identified as a wilderness study area due to a lack of naturalness, a lack of manageability, and a lack of outstanding opportunities for solitude and for primitive recreation.